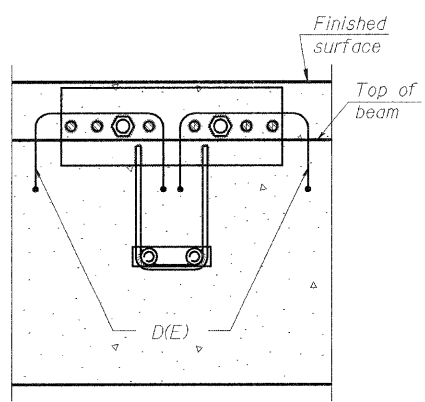
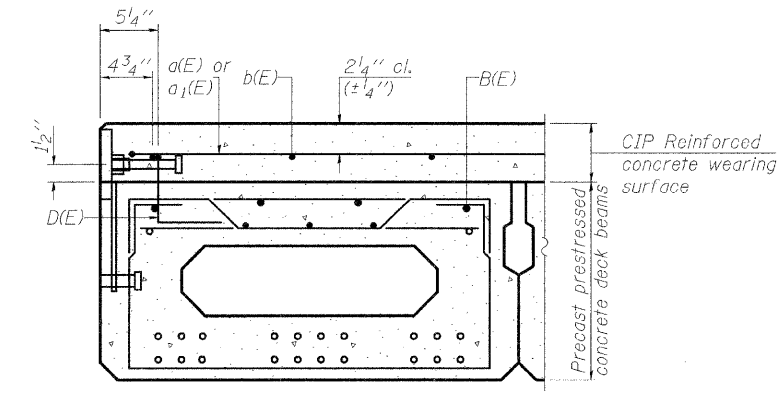


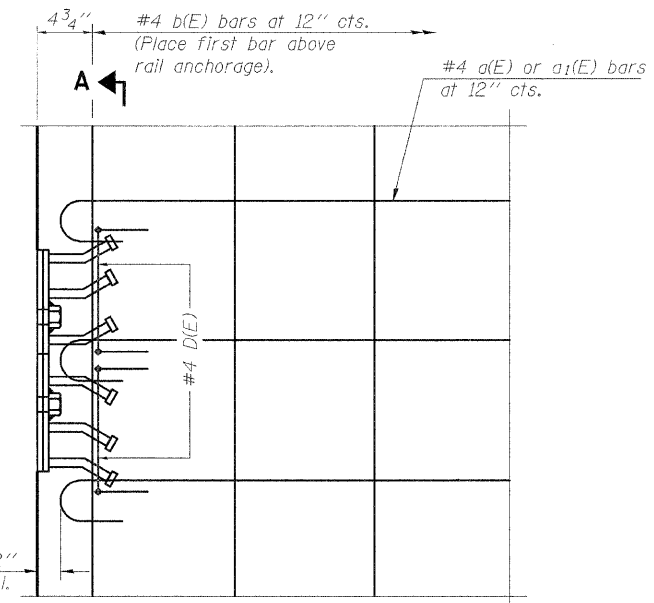
RAIL POST SPACING DETAIL



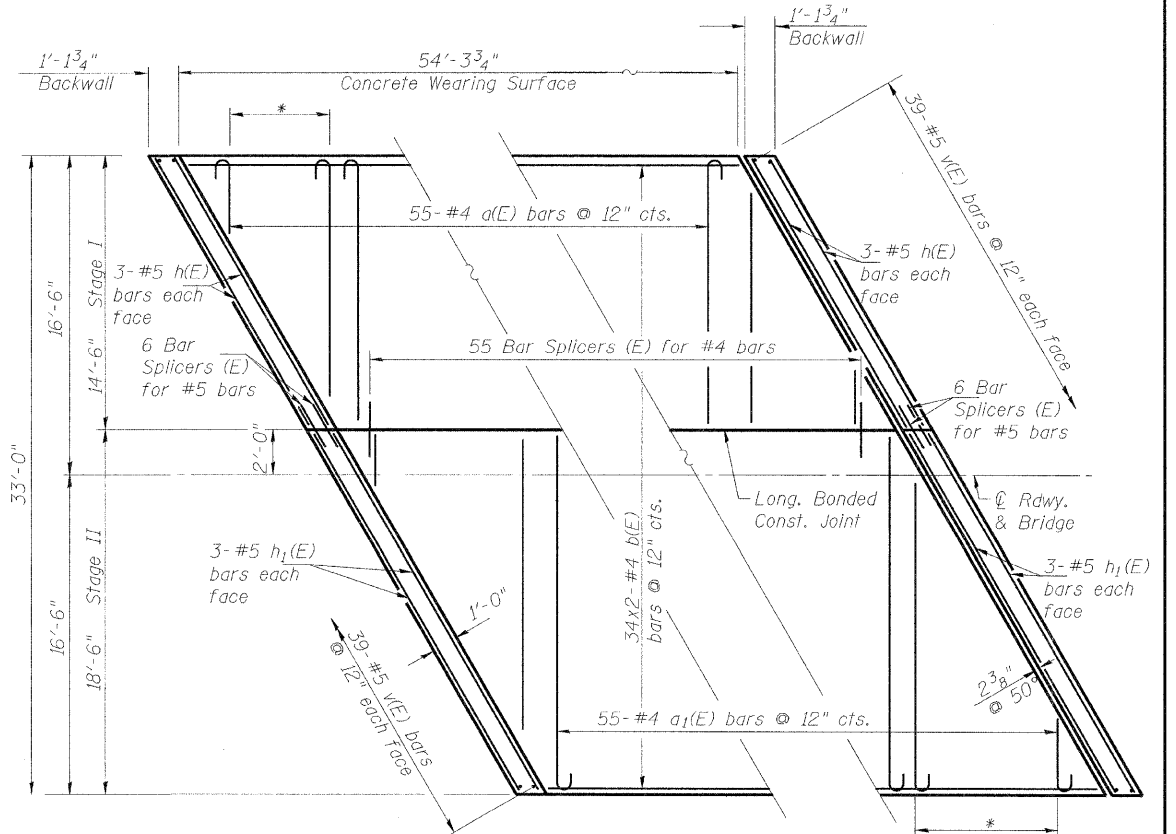
SECTION A-A



CROSS SECTION



PLAN

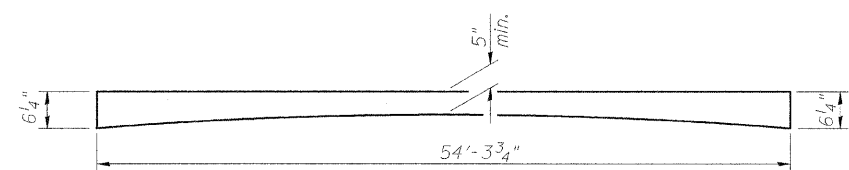


CONCRETE WEARING SURFACE AND BACKWALL PLAN

REINFORCED CONCRETE WEARING SURFACE AND RAILING CONNECTION DETAILS

The rail anchorage and bar D(E) shall be cast with the beam and the wearing surface shall be cast in the field. Formwork necessary for the wearing surface may be secured utilizing the bottom rail anchorage inserts and/or additional inserts cast into the beam. Drilling into the beam will not be permitted.

Backwall paid for as Concrete Structures
* Order bars full length. Cut to fit skew and use remainder of bars at other end of deck. Always place hooked end at outside edge of CWS.



APPROX. REINFORCED CONCRETE WEARING SURFACE PROFILE

Thickness at centerline roadway and bridge will be 1/4" greater than shown above.

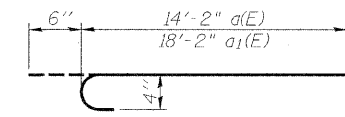
DESIGNED	DDB
CHECKED	LLV
DRAWN	MJY
CHECKED	LLV

BILL OF MATERIAL

Bar	No.	Size	Length	Shape	
a(E)	55	#4	14'-8"	U	
a1(E)	55	#4	18'-8"	U	
b(E)	68	#4	27'-10"	U	
h(E)	12	#5	16'-5"	U	
h1(E)	12	#5	21'-0"	U	
v(E)	156	#5	1'-11"	U	
Reinforcement Bars, Epoxy Coated				Pound	3270
Concrete Structures				Cu. Yd.	6.5
Concrete Wearing Surface, 5"				Sq. Yd.	199

MIN. BAR LAPS

#4 bars = 1'-8"



a(E) & a1(E) BAR

**RAIL POST SPACING
CONCRETE WEARING SURFACE
F.A.P. 770 (IL RTE. 128)
OVER TRIBUTARY TO MARROWBONE CREEK
SECTION 116-BR-1
MOULTRIE COUNTY STA. 959+14.00
STRUCTURE NO. 070-0037**

STS | AECOM

111 NE Jefferson Ave.
Peoria, Illinois 61602
Ph(309)676-8464
FAX(309)676-5445
IL Design Firm Reg.
No. 184-001518
www.sts.aecom.com