

F.A.P. RTE.	SECTION	COUNTY	TOTAL SHEETS	SHEET NO.
820	(22,5)RS-2	COLES	22	1
FED. ROAD DIST. NO.	ILLINOIS	CONTRACT NO. 74263		

STATE OF ILLINOIS  
DEPARTMENT OF TRANSPORTATION  
DIVISION OF HIGHWAYS

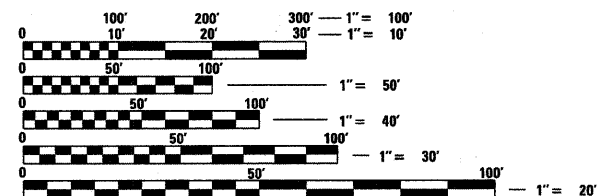
**PROPOSED  
HIGHWAY PLANS**

FAP ROUTE 820 (IL 130)  
SECTION (22,5)RS-2  
PROJECT: F-0820(013)  
3P RESURFACING  
COLES COUNTY  
C-97-094-07

FOR INDEX OF SHEETS, SEE SHEET NO. 2

**STATION EQUATIONS:**

STA. 10+00.00 (BK) = 43+85.00 (AH)  
STA. 188+65.00 (BK) = 7+07.50 (AH)

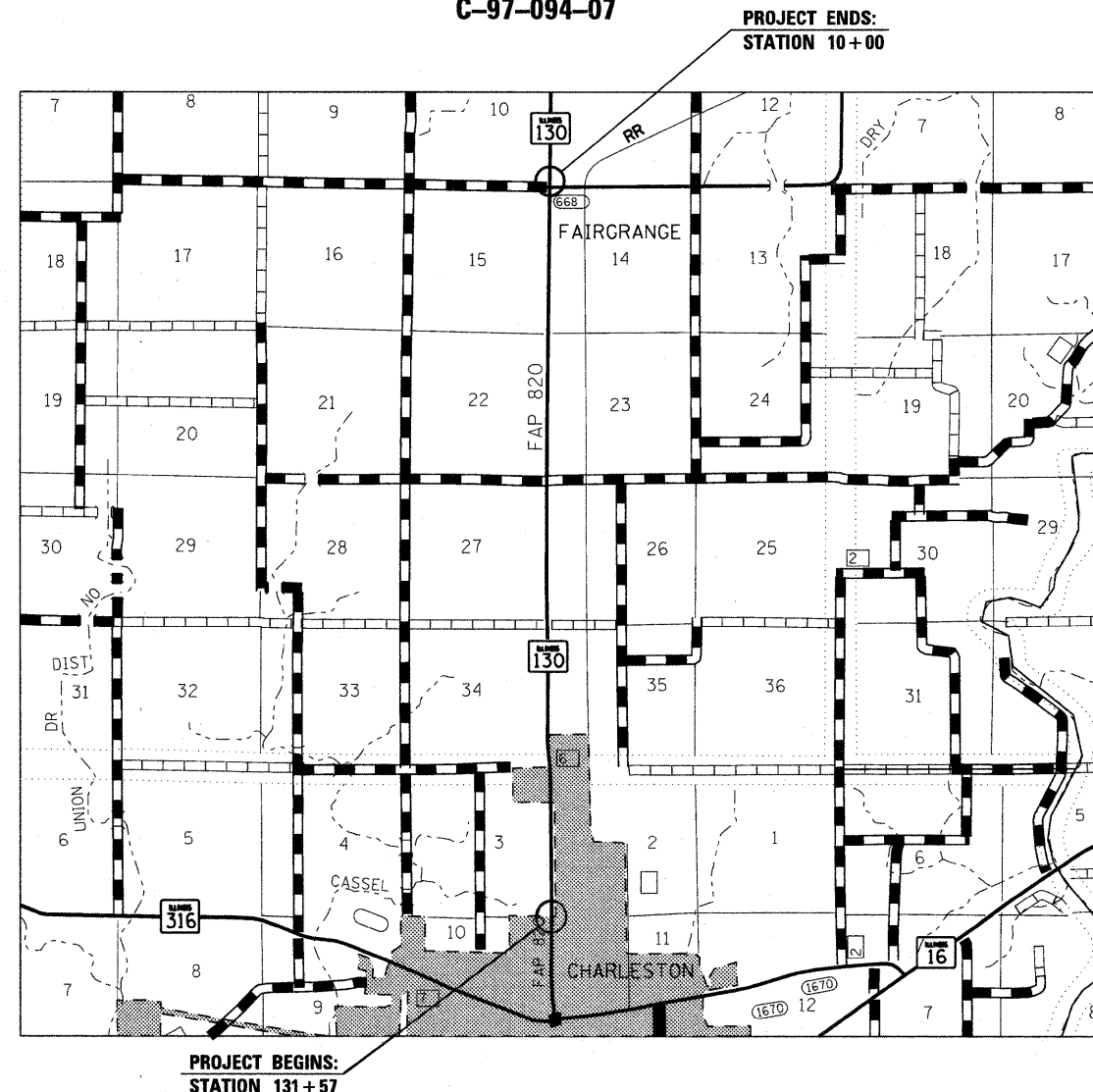


FULL SIZE PLANS HAVE BEEN PREPARED USING STANDARD ENGINEERING SCALES. REDUCED SIZED PLANS WILL NOT CONFORM TO STANDARD SCALES. IN MAKING MEASUREMENTS ON REDUCED PLANS, THE ABOVE SCALES MAY BE USED.

J.U.L.I.E.  
JOINT UTILITY LOCATION INFORMATION FOR EXCAVATION  
1-800-892-0123  
OR 811

PROJECT ENGINEER: TOM RONAN  
PROJECT MANAGER: JEFF DAVISON

CONTRACT NO 74263

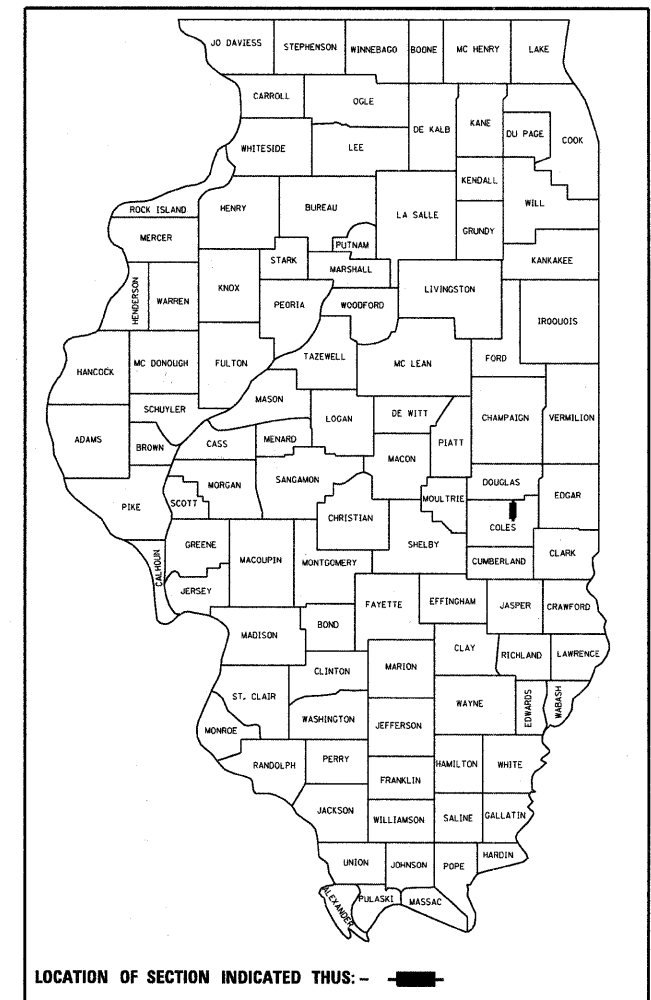


PROJECT BEGINS:  
STATION 131+57

PROJECT ENDS:  
STATION 10+00

GROSS LENGTH = 26,929.5 FT. = 5.1 MILE

D-97-054-07



LOCATION OF SECTION INDICATED THIS: —

STATE OF ILLINOIS  
DEPARTMENT OF TRANSPORTATION  
DIVISION OF HIGHWAYS

SUBMITTED October 14, 2008

*Roger L. DiStefano*  
DEPUTY DIRECTOR OF HIGHWAYS, REGION ENGINEER

December 5, 2008  
*Eric E. Haran*  
SENIOR ENGINEER OF DESIGN AND ENVIRONMENT

December 5, 2008  
*Christine M. Reed*  
DIRECTOR OF HIGHWAYS, CHIEF ENGINEER

**PRINTED BY THE AUTHORITY  
OF THE STATE OF ILLINOIS**

## INDEX OF SHEETS

1	COVER SHEET
2	INDEX, STANDARDS AND GENERAL NOTES
3	SUMMARY OF QUANTITIES
4-5	TYPICAL SECTIONS
6-8	SCHEDULE OF QUANTITIES
9	TIE SHEET
10-19	PLAN SHEETS
20-22	DETAIL SHEETS

## STANDARDS IN THE PLANS

000001-05	STANDARD SYMBOLS, ABBREVIATIONS, AND PATTERNS
001006	DECIMAL OF AN INCH AND OF A FOOT
406201-01	MAILBOX TURNOUT
442201-03	CLASS C AND D PATCHES
482011-03	BITUMINOUS SHOULDER STRIPS/SHOULDERS WITH RS OR WIDENING & RS PROJECTS
701001-02	OFF-ROAD OPERATIONS, 2L, 2W, MORE THAN 15' AWAY
701006-03	OFF-ROAD OPERATIONS, 2L, 2W, 15' TO 24" FROM PAVEMENT EDGE
701011-02	OFF-ROAD MOVING OPERATIONS, 2L, 2W, DAY ONLY
701301-03	LANE CLOSURE, 2L, 2W, SHORT TIME OPERATIONS
701306-02	LANE CLOSURE, 2L, 2W, SLOW MOVING OPERATIONS DAY ONLY, FOR SPEEDS >= 45 MPH
701311-03	LANE CLOSURE, 2L, 2W, MOVING OPERATIONS - DAY ONLY
701336-05	LANE CLOSURE, 2L, 2W, WORK AREAS IN SERIES, FOR SPEEDS >= 45 MPH
701901-01	TRAFFIC CONTROL DEVICES

## GENERAL NOTES

THIS SECTION SHALL BE CONSTRUCTED IN ACCORDANCE WITH THE PLANS, THE "STANDARD SPECIFICATIONS FOR ROAD AND BRIDGE CONSTRUCTION", ADOPTED JANUARY 1, 2007; THE "SUPPLEMENTAL SPECIFICATIONS AND RECURRING SPECIAL PROVISIONS" INDICATED ON THE CHECK SHEET, AND "THE SPECIAL PROVISIONS" INCLUDED IN THE PROPOSAL.

THE WORK INCLUDED IN THIS SECTION CONSISTS OF REHABILITATING APPROXIMATELY 5.0 MILES OF FAP 820 (IL 130) BY MILLING, PATCHING, RESURFACING, AND ANY OTHER WORK NECESSARY TO COMPLETE THIS SECTION.

PLAN DIMENSIONS AND DETAILS RELATIVE TO THE EXISTING STRUCTURE HAVE BEEN TAKEN FROM EXISTING PLANS AND ARE SUBJECT TO NOMINAL CONSTRUCTION VARIATIONS. IT SHALL BE THE CONTRACTOR RESPONSIBILITY TO VERIFY SUCH DIMENSIONS AND DETAILS IN THE FIELD AND MAKE NECESSARY APPROVED ADJUSTMENTS PRIOR TO THE CONSTRUCTION OR ORDERING OF MATERIAL. SUCH VARIATIONS SHALL NOT BE CAUSE FOR ADDITIONAL COMPENSATION OR A CHANGE IN THE SCOPE OF THE WORK. THE CONTRACTOR WILL BE PAID FOR THE QUANTITY ACTUALLY FURNISHED AT THE UNIT PRICE BID FOR THE WORK.

SHORT TERM PAVEMENT MARKING ON THE MILLED SURFACE SHALL BE PAINT. ALL OTHER SHORT TERM PAVEMENT MARKINGS SHALL BE TAPE.

THE ACTUAL LOCATIONS OF PAVEMENT PATCHING SHALL BE DETERMINED BY THE ENGINEER IN THE FIELD.

ANY SECTION CORNERS DISTURBED DURING CONSTRUCTION SHALL BE RE-ESTABLISHED BY A REGISTERED LAND SURVEYOR AT THE CONTRACTOR'S EXPENSE. A LIST OF SECTION CORNERS WITHIN THE PROJECT LIMITS IS CONTAINED IN THE SCHEDULE OF QUANTITIES.

ALL ELEVATIONS SHOWN IN PLANS ARE BASED ON U.S.G.S. DATUM.

THE LOCATIONS AND/OR DEPTHS OF UNDERGROUND UTILITIES SHOWN HAVE BEEN TAKEN FROM INFORMATION FURNISHED BY THE UTILITY OWNERS AND MUST BE CONSIDERED APPROXIMATE. FIELD MARKINGS OF UTILITIES IN CRITICAL AREAS MAY BE OBTAINED BY PROVIDING A MINIMUM OF 96 HOURS ADVANCE NOTICE THROUGH THE J.U.L.I.E. SYSTEM BY CALLING 800-892-0123.

THE PAVEMENT SHALL BE CLEANED IN ACCORDANCE WITH SECTION 406 OF THE STANDARD SPECIFICATIONS PRIOR TO THE PLACING OF THE BITUMINOUS OVERLAYS. AREAS TO BE PREPARED SHALL BE DETERMINED BY THE ENGINEER AND WILL INCLUDE;

1. BROKEN OR DELAMINATED CONCRETE
2. PATCHES OF TAR OR COLD MIX
3. EXISTING UNSTABLE PATCHES
4. DETERIORATED AREAS BEYOND EXISTING PATCHES
5. CENTERLINE JOINT

THE CONTRACTOR SHALL PROVIDE INTERNET ACCESS TO THE BITUMINOUS PLANT QUALITY CONTROL LAB SO THAT BITUMINOUS PLANT REPORTS CAN BE E-MAILED TO THE DISTRICT HEADQUARTERS. THIS WORK WILL NOT BE PAID FOR SEPARATELY BUT SHALL BE INCLUDED IN THE UNIT PRICES FOR OTHER ITEMS IN THE CONTRACT.

THE RESIDENT ENGINEER SHALL BE THE SOLE JUDGE CONCERNING THE CURING TIME FOR THE BITUMINOUS SURFACE COURSE.

BITUMINOUS MATERIALS (PRIME COAT) SHALL BE EITHER RC-70 OR SS-1HP.

AGGREGATE FOR AGGREGATE SHOULDERS ON PRIMARY ROUTES SHALL BE CRUSHED STONE OR RAP.

VIBRATORY ROLLERS IN DYNAMIC MODE WILL NOT BE PERMITTED.

COST OF REMOVAL OF TEMPORARY RAMP SHALL BE INCLUDED IN THE UNIT PRICE FOR TEMPORARY RAMP.

THE FOLLOWING MIXTURE REQUIREMENTS ARE APPLICABLE TO THIS PROJECT:

APPLICATION	AC/PG	DESIGN AIR VOIDS	MIXTURE COMPOSITION	FRICTION AGGREGATE
SURFACE COURSE (1 1/2")				
HOT MIX ASPHALT SURFACE COURSE, MIX "C", N90 (1 1/2")	PG 64-22	4%NDESIGN = 90	IL-9.5	MIXURE C
LEVELING BINDER (3/4")				
LEVELING BINDER (MACHINE METHOD) N90	PG 64-22	4%NDESIGN = 90	IL-9.5	NA
INCIDENTAL HMA SURFACING				
HOT MIX ASPHALT SURFACE COURSE, MIX "C", N70	PG 64-22	4%NDESIGN = 70	IL-9.5	MIXTURE C
CLASS D PATCHES				
HOT MIX ASPHALT BINDER COURSE, IL-19.0, N70	PG 64-22	4%NDESIGN = 70	IL-19.0	NA

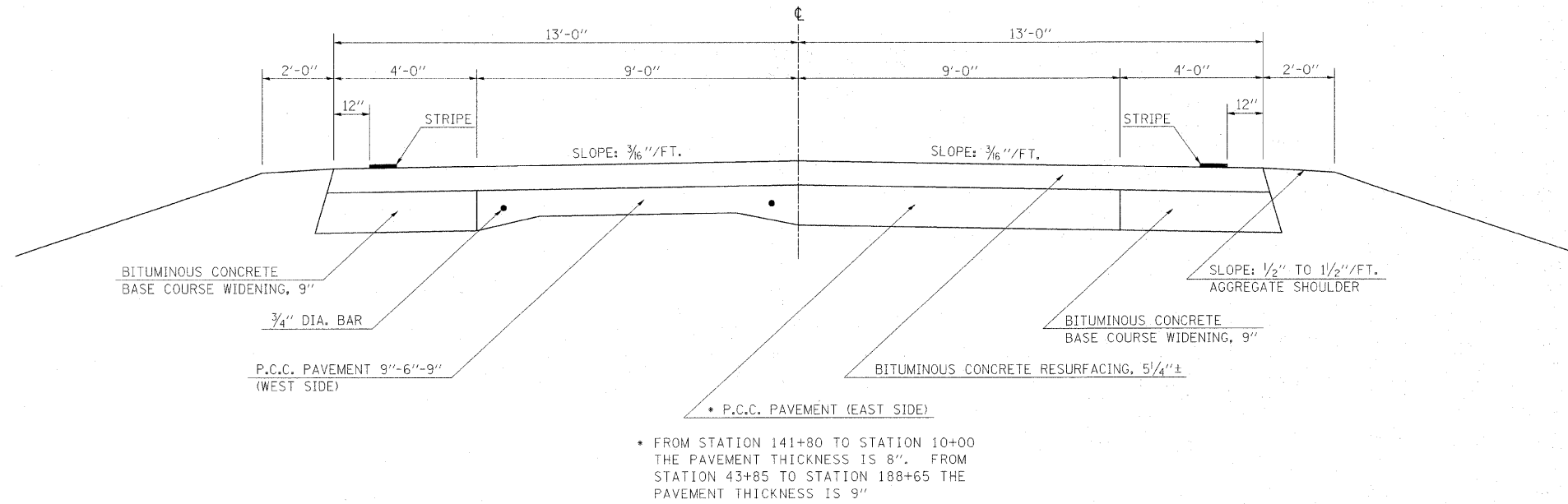
FILE NAME =	USER NAME = swartzw	DESIGNED -	REVISED -	<b>STATE OF ILLINOIS DEPARTMENT OF TRANSPORTATION</b>	<b>GENERAL NOTES AND INDEX OF SHEETS</b>	F.A.P. RTE.	SECTION	COUNTY	TOTAL SHEETS	SHEET NO.
cs:\pw\work\FWIDOT\SWARTZRW\dms50687\d74263-sh-t-index.dgn	DRAWN -	REVISED -	820			(22,5)RS-2	COLES	22	2	
PLOT SCALE = 50,0000 / / IN.	CHECKED -	REVISED -	CONTRACT NO. 74263							
PLOT DATE = 12/9/2008	DATE -	REVISED -	SCALE: NA			SHEET NO. 1 OF 1 SHEETS	STA. TO STA.	FED. ROAD DIST. NO.	ILLINOIS/FED. AID PROJECT	

SUMMARY OF QUANTITIES			80% FED. 20% STATE TOTAL QUANTITIES	CONSTRUCTION TYPE CODE 1000
CODE NO	ITEM	UNIT		
40200800	AGGREGATE SURFACE COURSE, TYPE B	TON	114	114
40600100	BITUMINOUS MATERIALS (PRIME COAT)	GALLON	7774	7774
40600300	AGGREGATE (PRIME COAT)	TON	156	156
40600645	LEVELING BINDER (MACHINE METHOD), N90	TON	3259	3259
40600895	CONSTRUCTING TEST STRIP	EACH	1	1
40600982	HOT-MIX ASPHALT SURFACE REMOVAL - BUTT JOINT	SO YD	58	58
40600990	TEMPORARY RAMP	SO YD	58	58
40603320	HOT-MIX ASPHALT SURFACE COURSE, MIX "C", N90	TON	6518	6518
40800050	INCIDENTAL HOT-MIX ASPHALT SURFACING	TON	31	31
44000158	HOT-MIX ASPHALT SURFACE REMOVAL, 2 1/4"	SO YD	1148	1148
44000198	HOT-MIX ASPHALT SURFACE REMOVAL, VARIABLE DEPTH	SO YD	77707	77707
44201815	CLASS D PATCHES, TYPE II, 14 INCH	SO YD	1987	1987
44201819	CLASS D PATCHES, TYPE III, 14 INCH	SO YD	352	352
44201821	CLASS D PATCHES, TYPE IV, 14 INCH	SO YD	217	217
48101200	AGGREGATE SHOULDERS, TYPE B	TON	1195	1195
67000500	ENGINEER'S FIELD OFFICE, TYPE B	CAL MO	5	5
67100100	MOBILIZATION	L SUM	1	1
70100460	TRAFFIC CONTROL AND PROTECTION, STANDARD 701306	L SUM	1	1
70100600	TRAFFIC CONTROL AND PROTECTION, STANDARD 701336	L SUM	1	1
70300100	SHORT-TERM PAVEMENT MARKING	FOOT	10772	10772
70300220	TEMPORARY PAVEMENT MARKING - LINE 4"	FOOT	63614	63614
70301000	WORK ZONE PAVEMENT MARKING REMOVAL	SO FT	3018	3018
* 78001110	PAINT PAVEMENT MARKING - LINE 4"	FOOT	63614	63614
* 78100100	RAISED REFLECTIVE PAVEMENT MARKER	EACH	337	337
Z0025500	FURNISHING AND INSTALLING PROPERTY MARKERS	EACH	5	5

\*Specialty Items

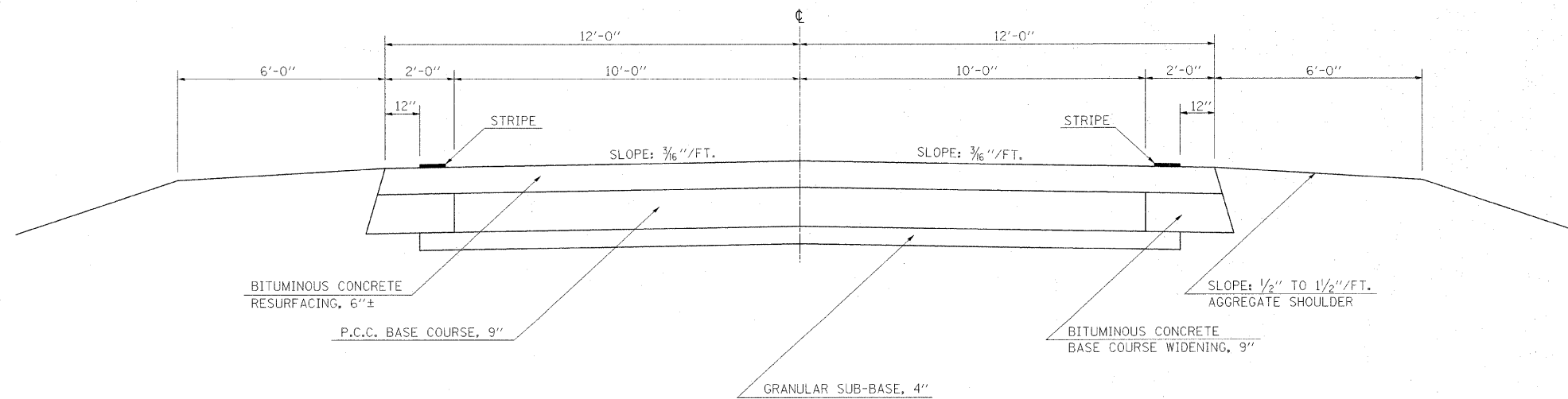
① EXISTING TYPICAL CROSS SECTION

STA. 131+57 TO STA. 10+00  
 STA. 10+00 (BK) = STA. 43+85 (AH)  
 STA. 43+85 TO STA. 188+64  
 STA. 188+64 (BK) = STA. 7+07.50 (AH)



② EXISTING TYPICAL CROSS SECTION

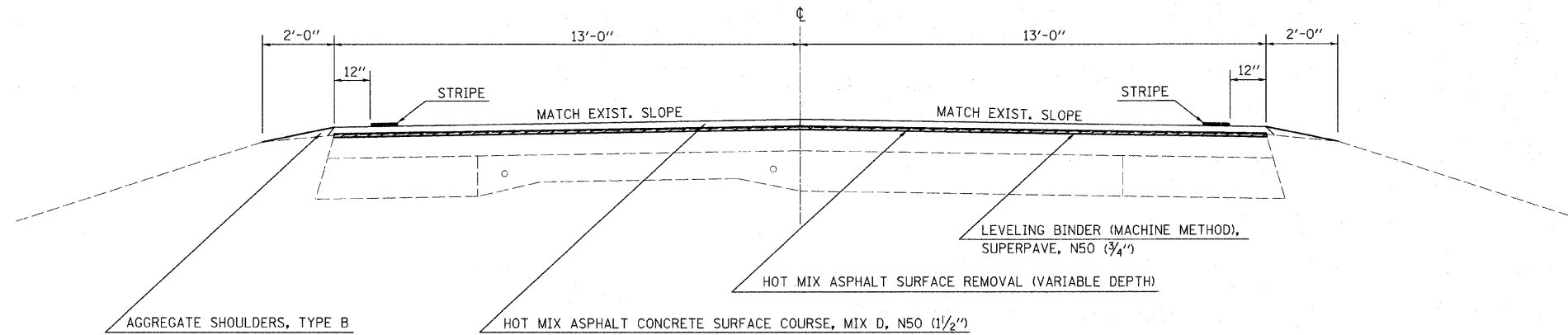
STA. 7+07.50 TO STA. 10+00



FILE NAME =	USER NAME = swartzrw	DESIGNED -	REVISED -	<b>STATE OF ILLINOIS DEPARTMENT OF TRANSPORTATION</b>	<b>TYPICAL CROSS SECTIONS</b>			F.A.P. RTE.	SECTION	COUNTY	TOTAL SHEETS	SHEET NO.
cr:\pw\work\PWIDOT\SWARTZRW\dms50687\d74263-shr\typical.dgn	PLOT SCALE = 50,0000' / IN.	DRAWN -	REVISED -					820	(22,5)RS-2	COLES	22	4
	PLOT DATE = 10/9/2008	CHECKED -	REVISED -		SCALE: NA	SHEET NO. 1 OF 2 SHEETS	STA.	TO STA.	CONTRACT NO. 74263			
		DATE -	REVISED -						FED. ROAD DIST. NO. ILLINOIS FED. AID PROJECT			

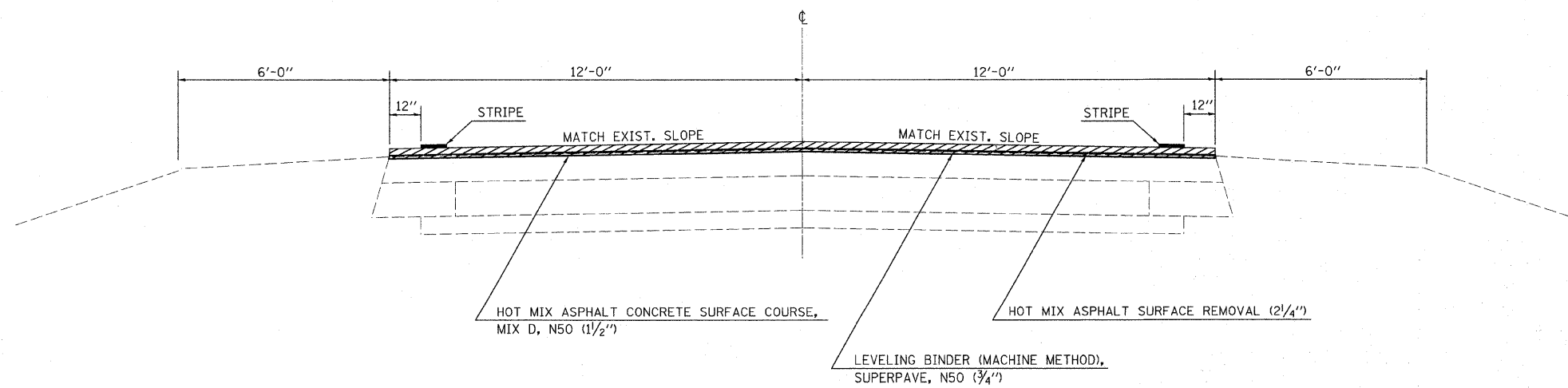
① PROPOSED TYPICAL CROSS SECTION

STA. 131+57 TO STA. 10+00  
 STA. 10+00 (BK) = STA. 43+85 (AH)  
 STA. 43+85 TO STA. 188+64  
 STA. 188+64 (BK) = STA. 7+07.50 (AH)

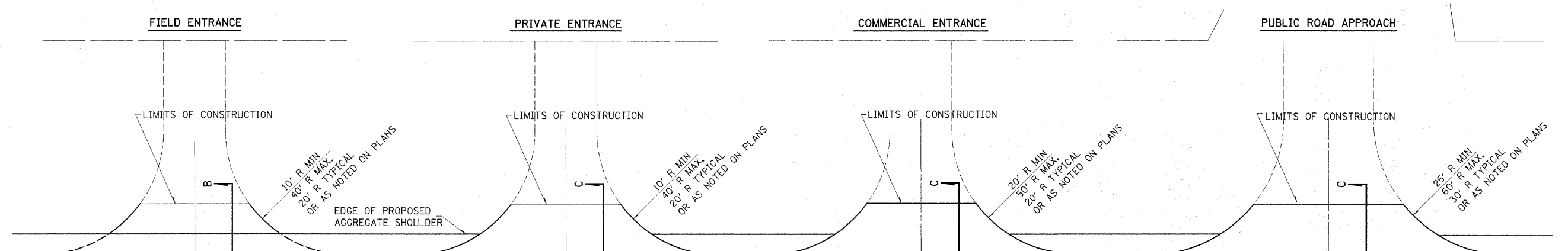


② PROPOSED TYPICAL CROSS SECTION

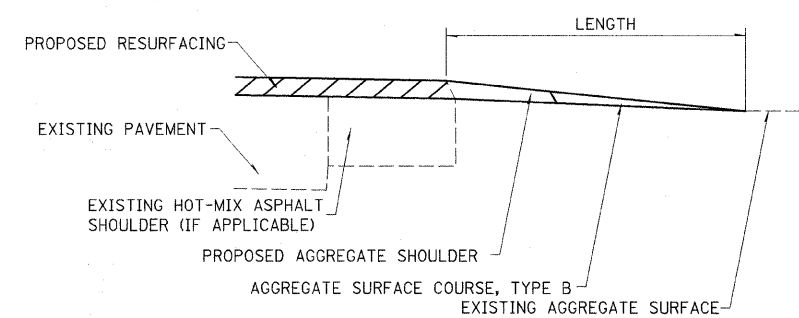
STA. 7+35.50 TO STA. 10+00



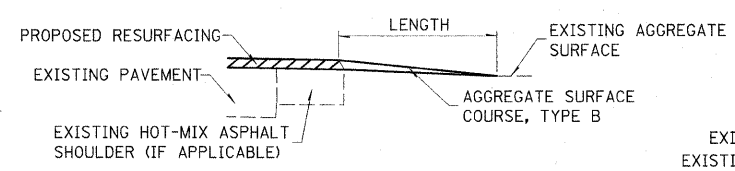
FILE NAME =	USER NAME = swartzw	DESIGNED -	REVISED -	<b>STATE OF ILLINOIS DEPARTMENT OF TRANSPORTATION</b>	<b>TYPICAL CROSS SECTIONS</b>		F.A.P. RTE.	SECTION	COUNTY	TOTAL SHEETS	SHEET NO.
ct\pw_work\FWIDOT\SWARTZRW\dms50687\d74263-shl-typico1.sdg	PLOT SCALE = 50,000' / IN.	DRAWN -	REVISED -				820	(22,5)RS-2	COLES	22	5
	PLOT DATE = 10/9/2008	CHECKED -	REVISED -		SCALE: NA SHEET NO. 2 OF 2 SHEETS STA. TO STA.		CONTRACT NO. 74263				
		DATE -	REVISED -		FED. ROAD DIST. NO. ILLINOIS FED. AID PROJECT						



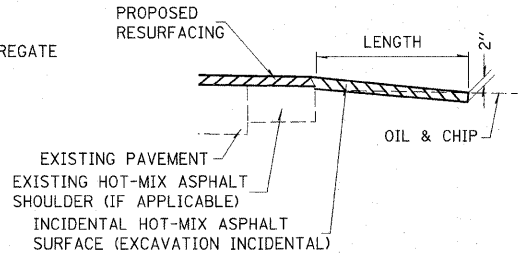
NOTE:  
LENGTH = 10' UNLESS OTHERWISE NOTED ON PLANS.



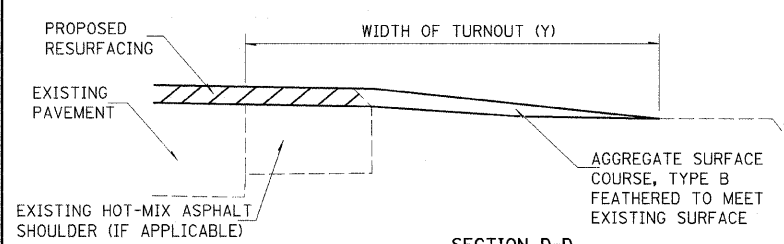
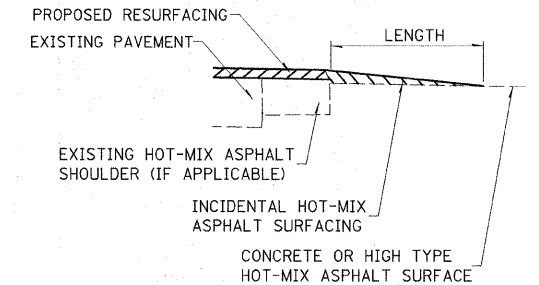
SECTION B-B



NOTE:  
IF THERE IS NO EXISTING HOT-MIX ASPHALT SHOULDER ENTRANCE TAPER LENGTH STARTS AT EDGE OF EXISTING PAVEMENT.



SECTION C-C



SECTION D-D

TYPICAL SECTION AT MAILBOX TURNOUT  
NOTE: SEE STANDARD 406201 FOR MAILBOX TURNOUT DETAILS

SIDE	STATION	TYPE	INCIDENTAL HOT-MIX ASPHALT SURFACING*		SIDE	STATION	TYPE	INCIDENTAL HOT-MIX ASPHALT SURFACING*		SIDE	STATION	TYPE	INCIDENTAL HOT-MIX ASPHALT SURFACING*		SIDE	STATION	TYPE	INCIDENTAL HOT-MIX ASPHALT SURFACING*	
			TON	TON				TON	TON				TON	TON				TON	TON
RT	131+19	CE	0.7		RT	50+12	FE		1.5	RT	78+56	PE		1.9	LT	172+32	FE		1.6
RT	129+61	PRA	1		LT	49+77	FE		1.6	RT	79+71	PE		2.4	RT	173+50	FE		1.6
RT	126+53	CE	5.3		RT	48+90	PE	0.6		LT	83+44	PRA	0.9		LT	173+83	MBT1		4.6
RT	121+72	CE	2.3		LT	48+53	MBT1		4.6	RT	83+44	PRA	1		LT	173+93	PE		1.8
LT	116+79	FE		1.6	RT	47+69	PE		3.1	LT	100+89	MBT1		4.0	LT	175+90	MBT1		4.6
RT	114+75	FE		1.3	RT	42+34	FE		2.2	RT	101+45	PE		1.8	LT	176+13	PE		2.2
RT	111+12	CE	1		RT	33+18	FE		1.6	LT	103+25	FE		1.6	LT	8+12	PRA	1.6	
RT	106+07	CE	0.9		LT	23+76	PRA	0.8		LT	108+00	MBT1		4.6	RT	8+12	PRA		
RT	101+19	CE	1.6		RT	23+76	PRA	0.7		RT	108+68	FE		1.2					
RT	98+87	CE	1.6		RT	20+36	FE		1.6	LT	108+68	CE		3.5					
RT	94+88	PE	0.6		RT	18+94	PE		2.3	LT	110+34	CE		3.3					
RT	93+53	PE	0.4		LT	18+94	MBT1		4.6	LT	119+78	FE		1.6					
LT	84+70	CE	3.5		LT	13+77	FE		2.5	RT	121+11	FE		2.6					
RT	82+99	CE			RT	11+17	FE		1.6	RT	130+20	FE		1.8					
LT	76+05	PRA	0.8		LT	10+44	FE		1.6	LT	137+36	MBT1		4.6					
RT	76+05	PRA	3.1		RT	49+97	FE		1.6	LT	137+67	PE		2.1					
RT	67+75	CE	2.5		LT	56+91	PE		1.2	LT	149+61	FE		1.7					
LT	62+30	PE		1.8	RT	56+77	FE		1.6	LT	150+48	MBT1		4.6					
LT	62+02	PE		1.8	LT	58+43	PE		1.5	RT	150+57	PE		1.6					
LT	61+75	MBT1		4.6	LT	58.66	MBT1		4.6	RT	151+48	PE		1.2					

FE - FIELD ENTRANCE PRA - PUBLIC ROAD APPROACH  
PE - PRIVATE ENTRANCE MBT - MAILBOX TURNOUT  
CE - COMMERCIAL ENTRANCE

\*BITUMINOUS MATERIALS AND AGGREGATE (PRIME COAT) FOR ENTRANCES AND PUBLIC ROAD APPROACHES SHALL BE CONSIDERED INCIDENTAL TO INCIDENTAL HOT-MIX ASPHALT SURFACING.

ISSUED: 08-03-99  
MODIFIED: 03-13-07

PAVING SCHEDULE					BITUMINOUS MATERIALS ( PRIME COAT)	AGGREGATE ( PRIME COAT)	HOT MIX ASPHALT SURFACE COURSE, MIX "C", N90	LEVELING BINDER ( MACHINE METHOD)	HOT MIX ASPHALT SURFACE REMOVAL ( BUTT JOINT)	TEMPORARY RAMP	HOT MIX ASPHALT SURFACE REMOVAL ( VARIABLE DEPTH)	HOT MIX ASPHALT SURFACE REMOVAL, 2 1/4"	INCIDENTAL HOT MIX ASPHALT SURFACE	AGGREGATE SHOULDERS, TYPE B		
STATION	TO	STATION	LENGTH	WIDTH											AREA	
			FEET	FEET	SQ YD	GALLON	TON	TON	TON	SQ YD	SQ YD	SQ YD	SQ YD	TON	TON	
0+00.00	TO	131+57.00	13,157.0	26.0	38,009.1	10.1	0.2	8.5	4.2	57.8	20.2	101.1			1.9	
129+61.00	TO	131+22.00	161.0	26.0	465.1	46.5	0.9	39.1	19.5			465.1			8.7	
85+44.00	TO	129+61.00	4,417.0	26.0	12,760.2	1,276.0	25.5	1071.9	535.9			12,760.2			238.1	
84+70.00	TO	85+44.00	74.0	26.0	213.8	21.4	0.4	5.9	2.9			213.8			4.0	
82+58.00	TO	84+70.00	212.0	26.0	612.4	61.2	1.2	51.4	25.7			612.4			11.4	
76+05.00	TO	82+58.00	653.0	26.0	1,886.4	188.6	3.8	158.5	79.2			1,886.4			35.2	
23+76.00	TO	76+05.00	5,229.0	26.0	15,106.0	1,510.6	30.2	1268.9	634.5			15,106.0			281.9	
10+00.00	TO	23+76.00	1,376.0	26.0	3,975.1	397.5	8.0	333.9	167.0			3,975.1			74.2	
10+00 BK	=	43+85 AH														
43+85.00	TO	83+44.00	3,959.0	26.0	11,437.1	1,143.7	22.9	960.7	480.4			11,437.1			213.4	
83+44.00	TO	188+65.00	10,521.0	26.0	30,394.0	3,039.4	60.8	2553.1	1276.5			30,394.0			567.2	
188+65 BK	=	7+07.50 AH														
7+07.50	TO	8+12.00	104.5			29.0	0.6	24.4	12.2			84.7			8.4	
8+12.00	TO	10+00.00	188.0			50.1	1.0	42.1	21.1	18.7	120.0				15.2	
FAIRGRANGE RD. INTERSECTION					1,148.1					18.7	551.4	1,148.1				
														DEDUCTION FOR ENTRANCES		264.5
PROJECT TOTALS			40,052		114,859	7,774	156	6,518	3,259	58	58	77,707	1,148	31	1,195	

SEE ENTRANCE SCHEDULE

PAVEMENT MARKING  
SCHEDULE

STATION		STATION	FEET	FT.	SQ. FT.	FT.	FT.	EACH
131+22.00	TO	131+57.00	35.0	14.0	5.0	113.8	113.8	0
129+61.00	TO	131+22.00	161.0	64.4	21.7	489.3	489.3	2
85+44.00	TO	129+61.00	4417.0	1,766.8	596.4	13,476.3	13,476.3	55
84+70.00	TO	85+44.00	74.0	29.6	10.6	242.5	242.5	1
82+58.00	TO	84+70.00	212.0	84.8	23.0	477.0	477.0	3
76+05.00	TO	82+58.00	653.0	261.2	66.5	1,340.8	1,340.8	8
23+76.00	TO	76+05.00	5229.0	2,091.6	560.5	11,585.0	11,585.0	65
10+00.00	TO	23+76.00	1376.0	550.4	147.3	3,044.3	3,044.3	17
10+00 BK	=	43+85 AH	0.0	0.0	0.0	0.0	0.0	0
43+85.00	TO	83+44.00	3959.0	1,583.6	426.7	8,841.8	8,841.8	50
83+44.00	TO	188+65.00	10521.0	4,208.4	1,137.6	23,606.3	23,606.3	132
188+65 BK	=	7+07.50 AH	0.0	0.0	0.0	0.0	0.0	0
7+07.50	TO	8+12.00	104.5	41.8	7.0	104.9	104.9	1
8+12.00	TO	10+00.00	188.0	75.2	16.0	292.8	292.8	2
PROJECT TOTALS			26,930	10,772	3,018	63,614	63,614	337

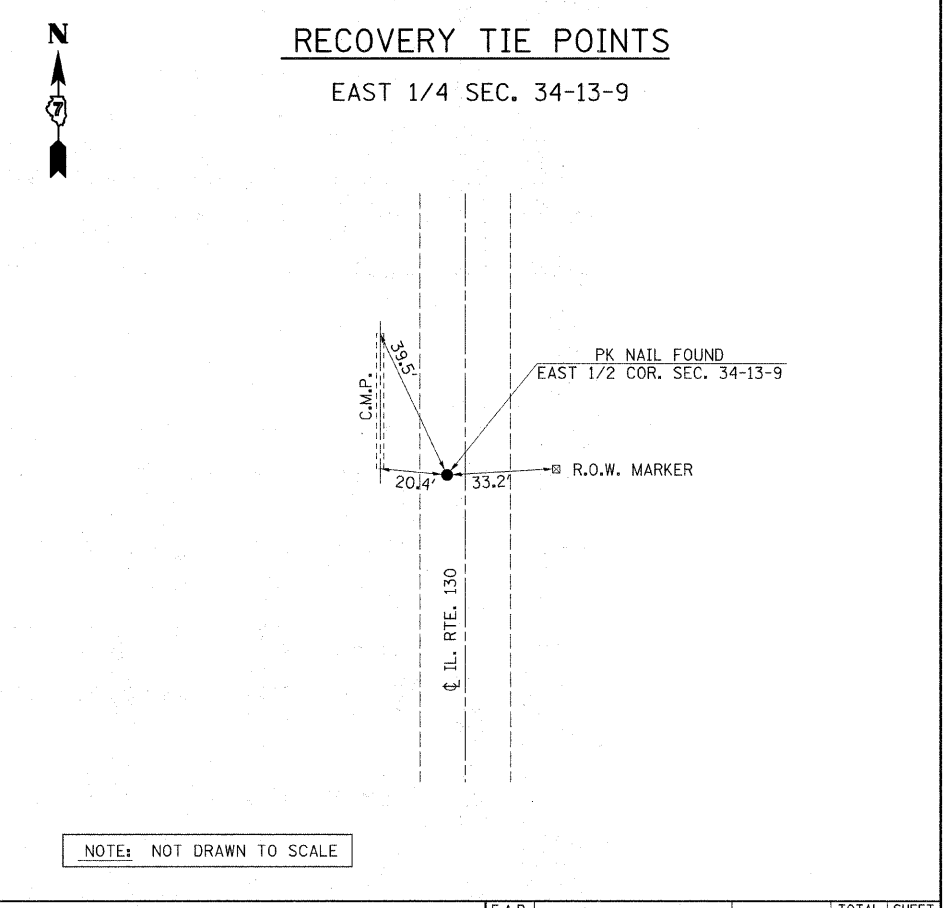
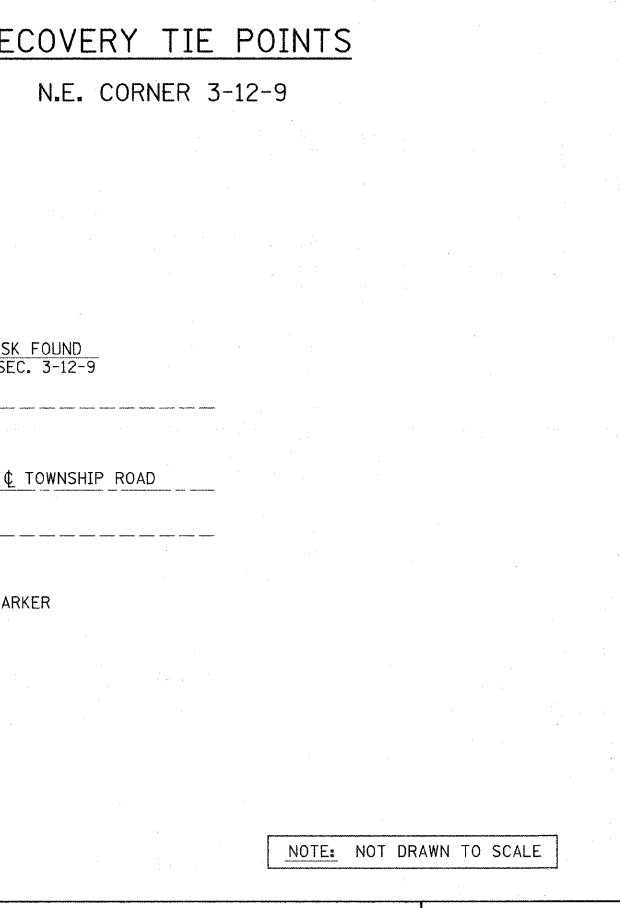
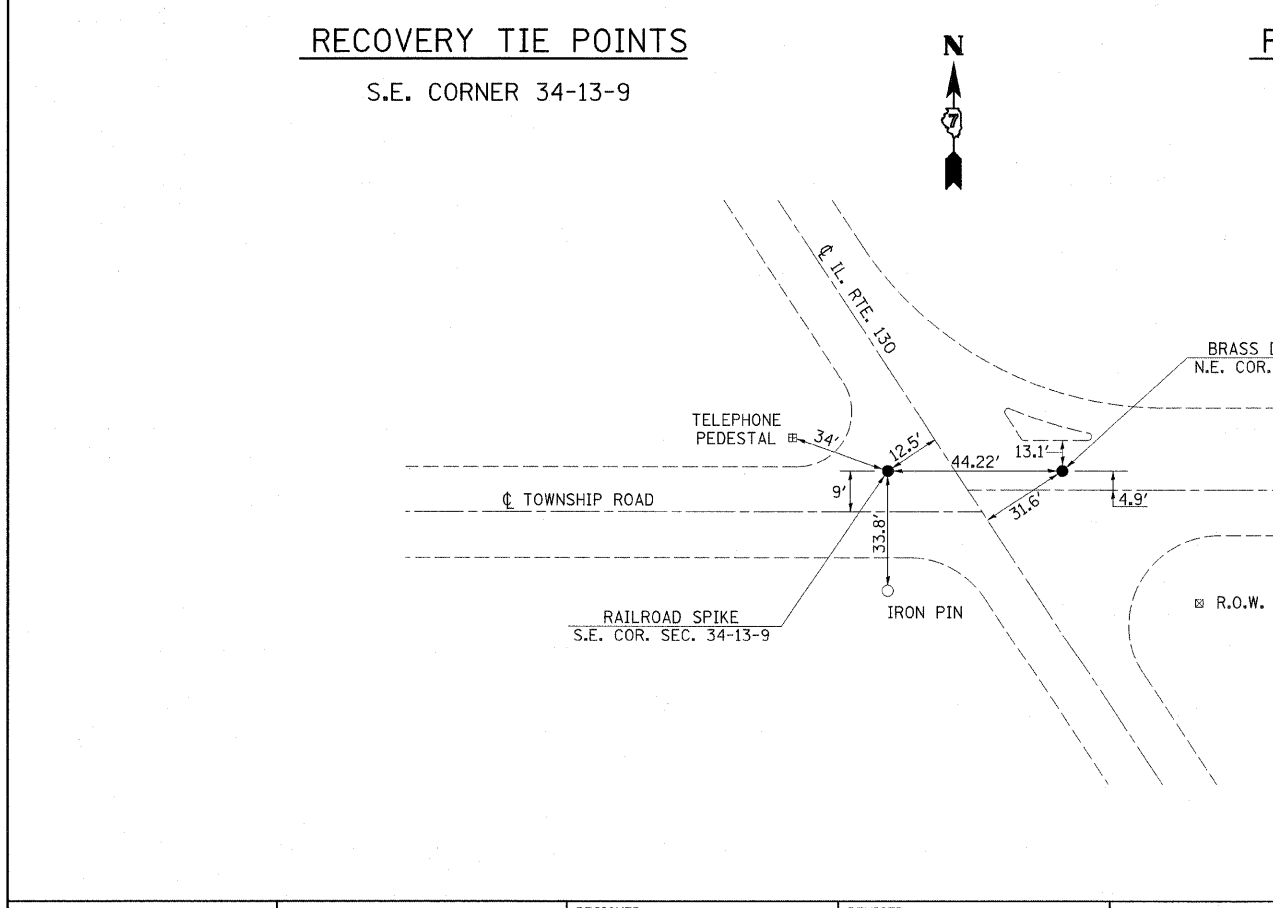
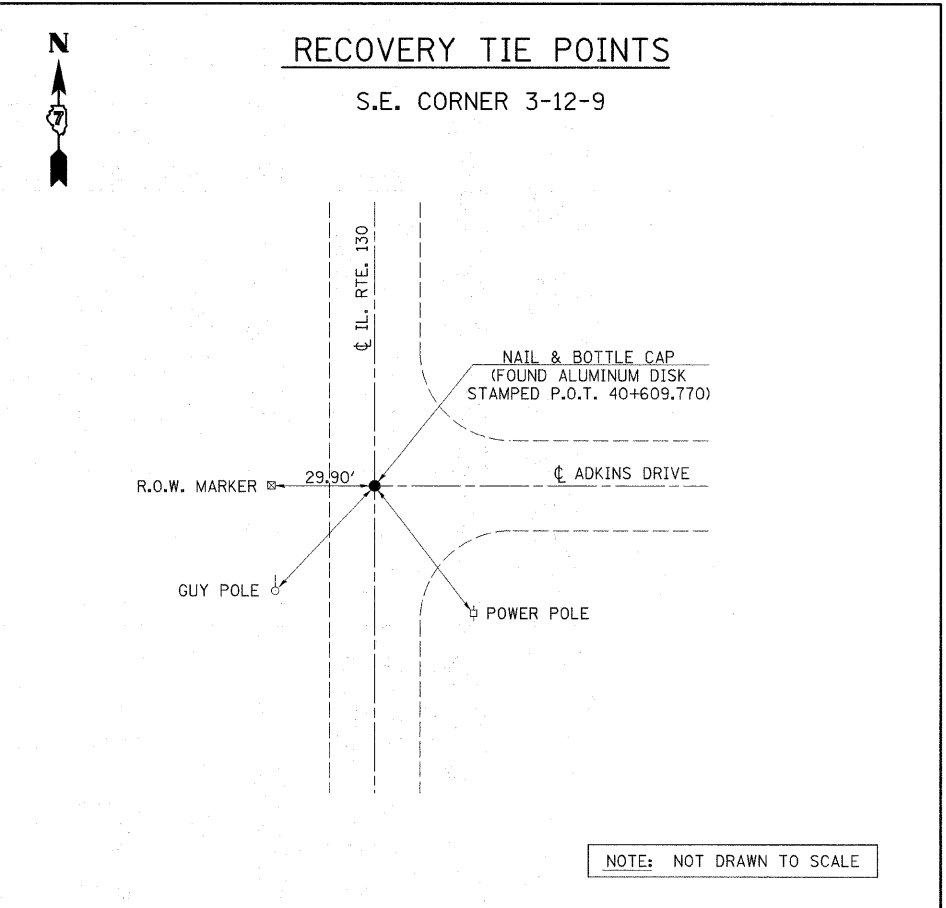
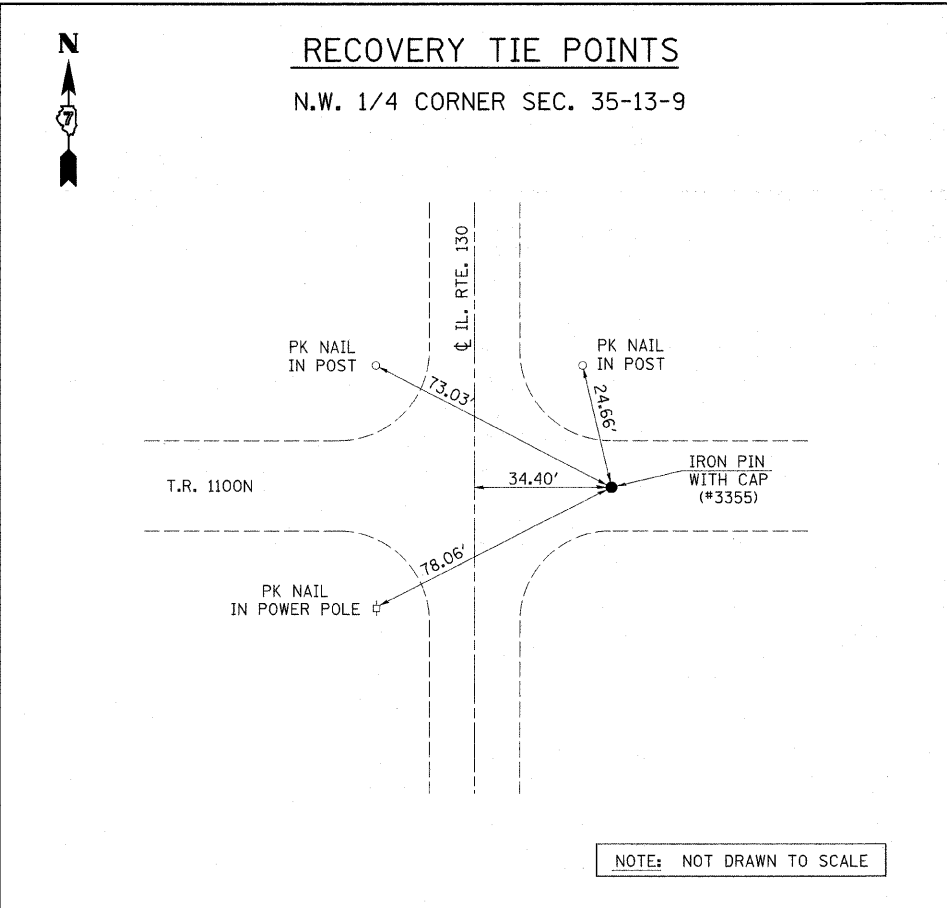
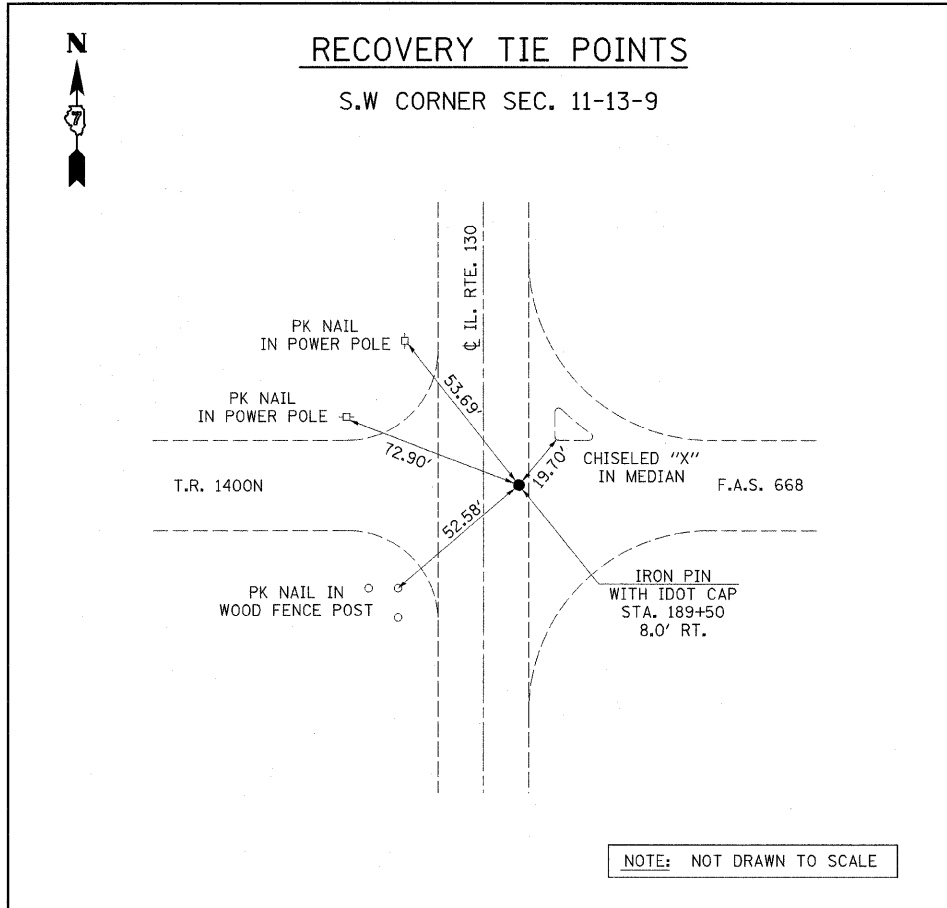
FURNISHING AND INSTALLING PROPERTY MARKERS

Location	No. (Each)	Offset	Description
129+76.00	1	0.00	Aluminum disc stamped "POT 40+609.770"
76+18.00	1	31.0' LT	Brass disc w/ center punch
76+15.00	1	12.5' LT	Nail stem
49+96.00	1	3.7' RT	PK nail
27+73.00	1	38.4' LT	Iron pipe
PROJECT TOTAL=		5	

CLASS D PATCHES

Type 1	Type 2	Type 3	Type 4
(SQ YD)	(SQ YD)	(SQ YD)	(SQ YD)
0.0	1987.1	352.2	216.7



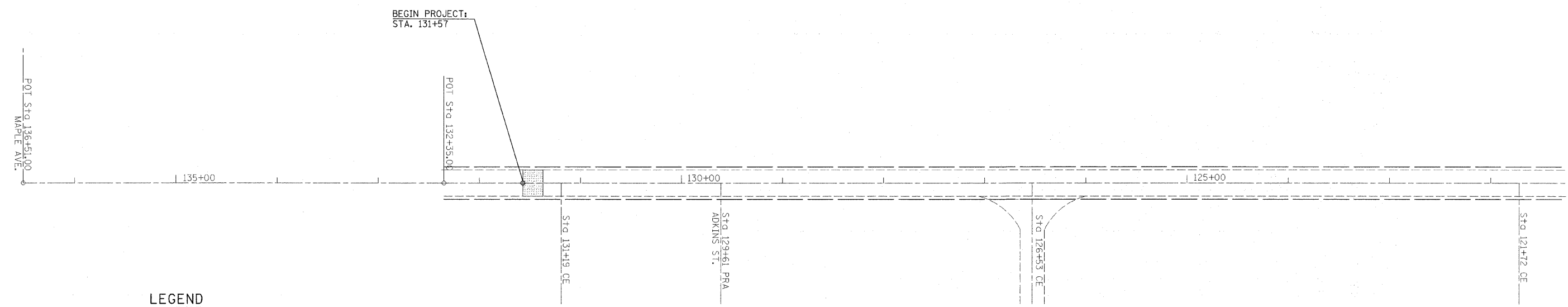


FILE NAME =	USER NAME = swartzrw	DESIGNED -	REVISED -
ct:\pw\work\PIWIDOT\SWARTZRW\dms50687\d74263-shr-detail.dgn		DRAWN -	REVISED -
		CHECKED -	REVISED -
		DATE -	REVISED -


**STATE OF ILLINOIS**  
**DEPARTMENT OF TRANSPORTATION**

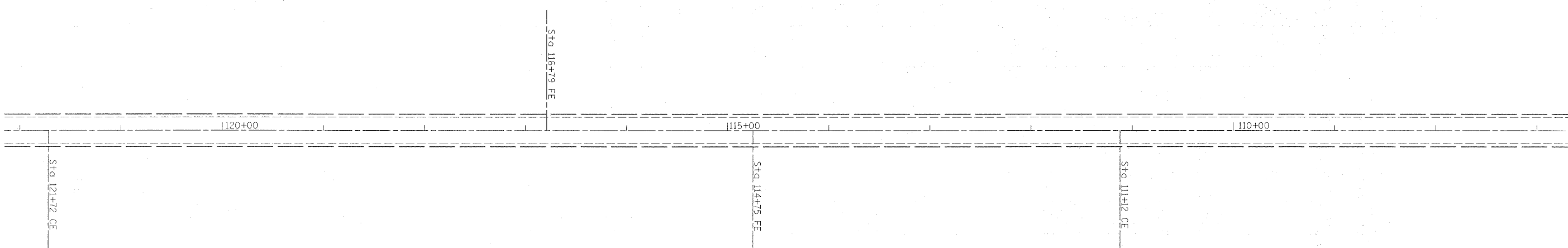
<b>RECOVERY TIE POINTS</b>			
SCALE: NA	SHEET NO. 1 OF 1 SHEETS	STA.	TO STA.

F.A.P. RTE.	SECTION	COUNTY	TOTAL SHEETS	SHEET NO.
820	(22,5)RS-2	COLES	22	9
FED. ROAD DIST. NO.			ILLINOIS FED. AID PROJECT	
			CONTRACT NO. 74263	



**LEGEND**

 HOT MIX ASPHALT SURFACE REMOVAL ( BUTT JOINT)

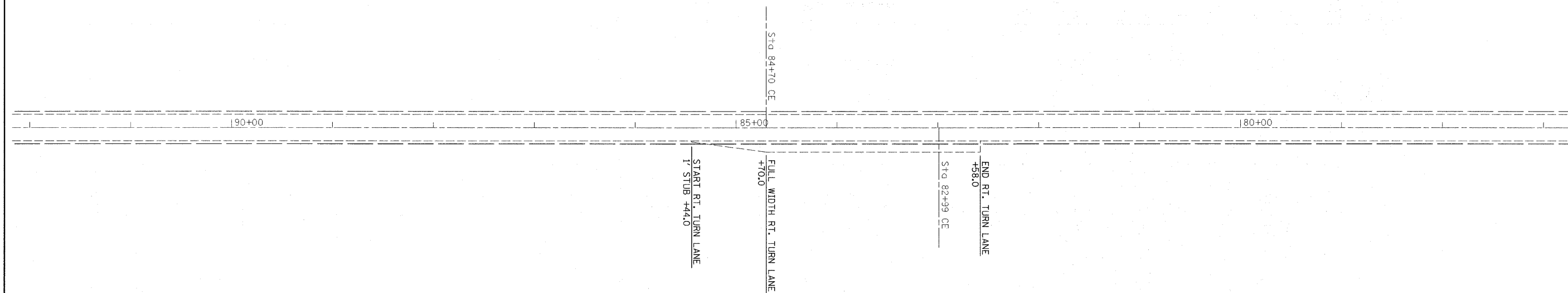
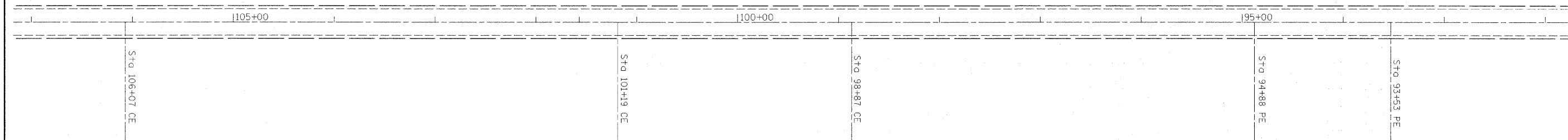


FILE NAME =	USER NAME = swartzw	DESIGNED -	REVISED -
ci:\pw_work\PWIDOT\SWARTZRW\dms50687\d74263-shr-50plan.dgn		DRAWN -	REVISED -
		CHECKED -	REVISED -
		DATE -	REVISED -

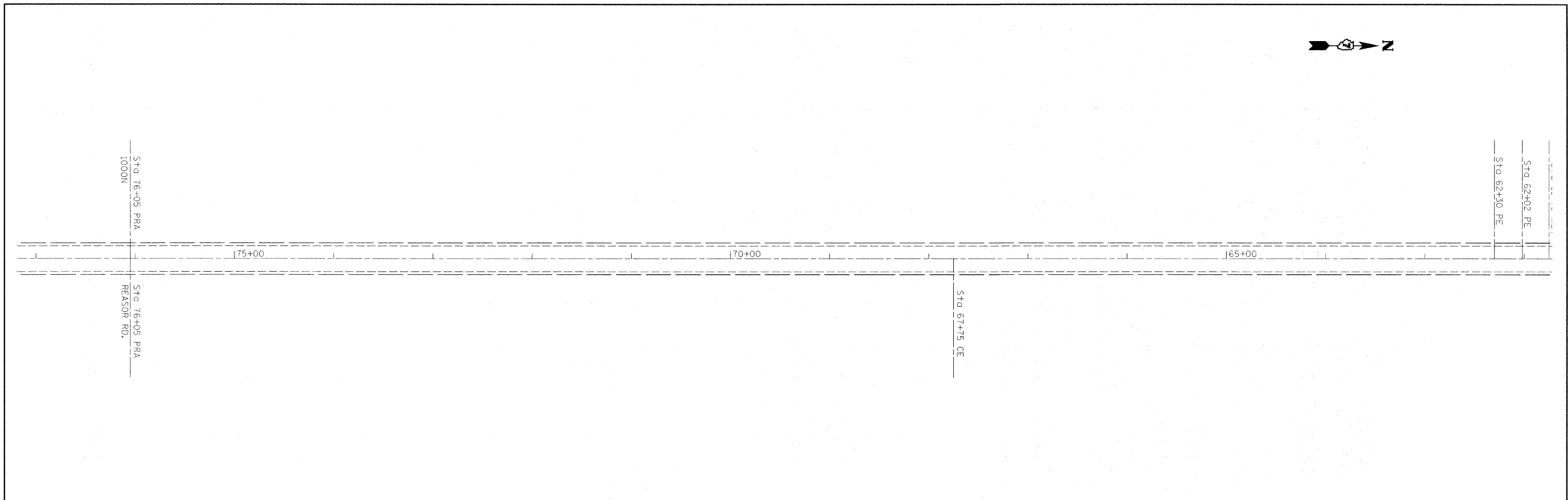
**STATE OF ILLINOIS  
DEPARTMENT OF TRANSPORTATION**

<b>PLAN SHEETS</b>	
SCALE: 50	SHEET NO. 1 OF 10 SHEETS
STA. 132+35 TO STA. 107+00	

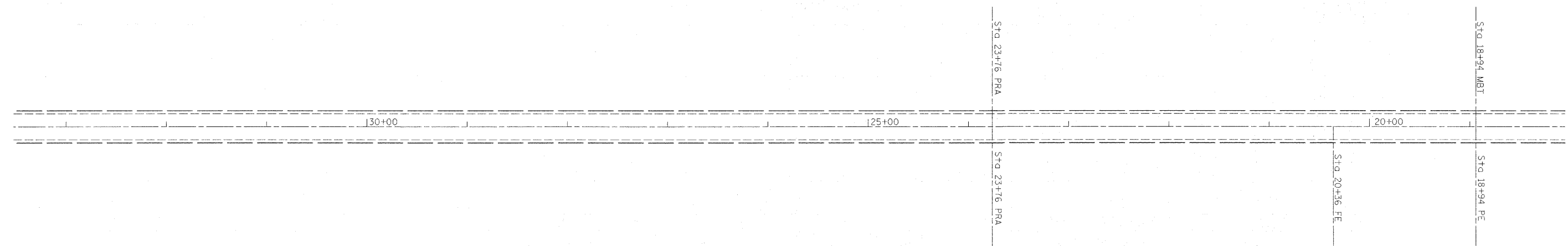
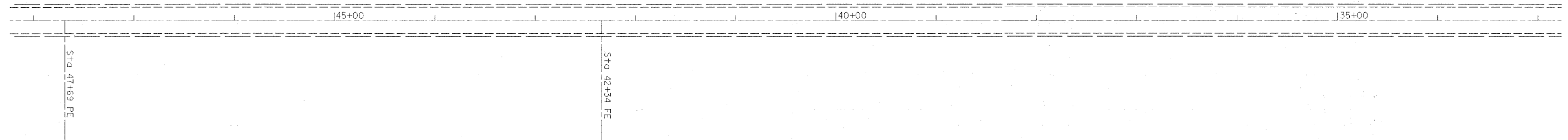
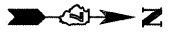
F.A.P. RTE.	SECTION	COUNTY	TOTAL SHEETS	SHEET NO.
820	(22,5)RS-2	COLES	22	10
FED. ROAD DIST. NO.			ILLINOIS FED. AID PROJECT	
			CONTRACT NO. 74263	



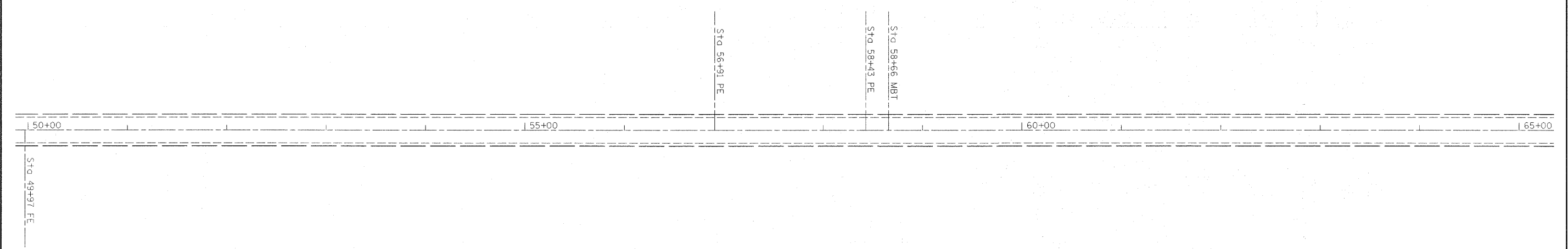
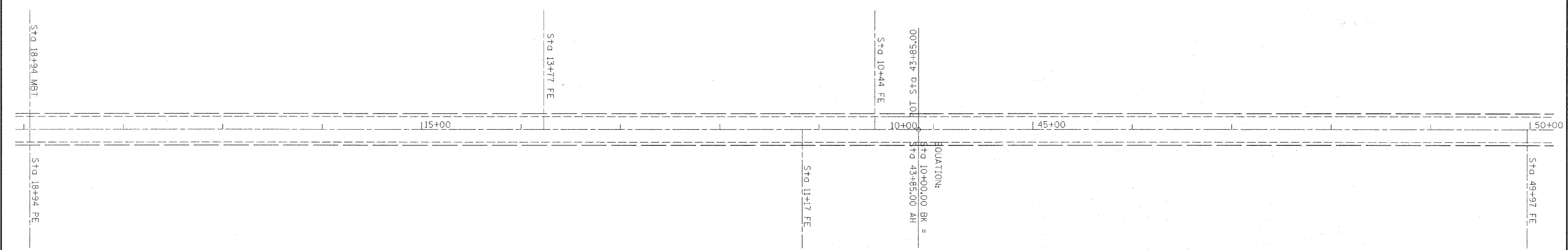
FILE NAME = c:\pwork\PWIDOT\SWARTZRW\dms50667\d7	USER NAME = swartzrw 4263-sht-50plan.dgn	DESIGNED -	REVISED -	<b>STATE OF ILLINOIS DEPARTMENT OF TRANSPORTATION</b>	<b>PLAN SHEETS</b>			F.A.P. RTE. 820	SECTION (22,5)RS-2	COUNTY COLES	TOTAL SHEETS 22	SHEET NO. 11
	PLOT SCALE = 50.0000 ' / IN.	DRAWN -	REVISED -		SCALE: 50	SHEET NO. 2 OF 10 SHEETS	STA. 107+00 TO STA. 77+00	CONTRACT NO. 74263				
	PLOT DATE = 10/9/2008	CHECKED -	REVISED -		FED. ROAD DIST. NO. ILLINOIS FED. AID PROJECT							
		DATE -	REVISED -									



FILE NAME = c:\pw_work\NPWIDOT\SWARTZRW\dms50687\d74263-st-50p1en.dgn	USER NAME = swartzrw	DESIGNED -	REVISED -	<b>STATE OF ILLINOIS DEPARTMENT OF TRANSPORTATION</b>	<b>PLAN SHEETS</b>			F.A.P. RTE. 820	SECTION (22,5)RS-2	COUNTY COLES	TOTAL SHEETS 22	SHEET NO. 12
	PLOT SCALE = 50.0000 ' / IN.	CHECKED -	REVISED -					CONTRACT NO. 74263				
	PLOT DATE = 10/9/2008	DATE -	REVISED -					ILLINOIS FED. AID PROJECT				
								SCALE: 50	SHEET NO. 3 OF 10 SHEETS	STA. 77+00	TO STA. 47+00	



FILE NAME =	USER NAME = swartzw	DESIGNED -	REVISED -	<b>STATE OF ILLINOIS DEPARTMENT OF TRANSPORTATION</b>	<b>PLAN SHEETS</b>			F.A.P. RTE.	SECTION	COUNTY	TOTAL SHEETS	SHEET NO.
ci:\pw\work\PW\DOT\SWARTZRW\dms50687\d7	74263-shr-50p1en.dgn	DRAWN -	REVISED -		SCALE: 50	SHEET NO. 4 OF 10 SHEETS	STA. 48+00 TO STA. 19+00	820	(22,5)RS-2	COLES	22	13
	PLOT SCALE = 50,0000' / IN.	CHECKED -	REVISED -					CONTRACT NO. 74263				
	PLOT DATE = 10/9/2008	DATE -	REVISED -					ILLINOIS FED. AID PROJECT				



FILE NAME = c:\pw_work\PIWIDOT\SWARTZRW\dms50687\d74263-shr-50p1en.dgn	USER NAME = swartzrw	DESIGNED -	REVISED -	<b>STATE OF ILLINOIS</b> <b>DEPARTMENT OF TRANSPORTATION</b>	<b>PLAN SHEETS</b>			F.A.P. RTEL	SECTION	COUNTY	TOTAL SHEETS	SHEET NO.	
	PLOT SCALE = 50.0000' / IN.	CHECKED -	REVISED -					820	(22,5)RS-2	COLES	22	14	
	PLOT DATE = 10/9/2008	DATE -	REVISED -		SCALE: 50	SHEET NO. 5 OF 10 SHEETS	STA. 19+00	TO STA. 65+00	FED. ROAD DIST. NO. ILLINOIS FED. AID PROJECT				
								<b>CONTRACT NO. 74263</b>					



165+00 | 70+00 | 75+00 | 80+00

Sta. 79+71 MBT

Sta. 79+71 PE

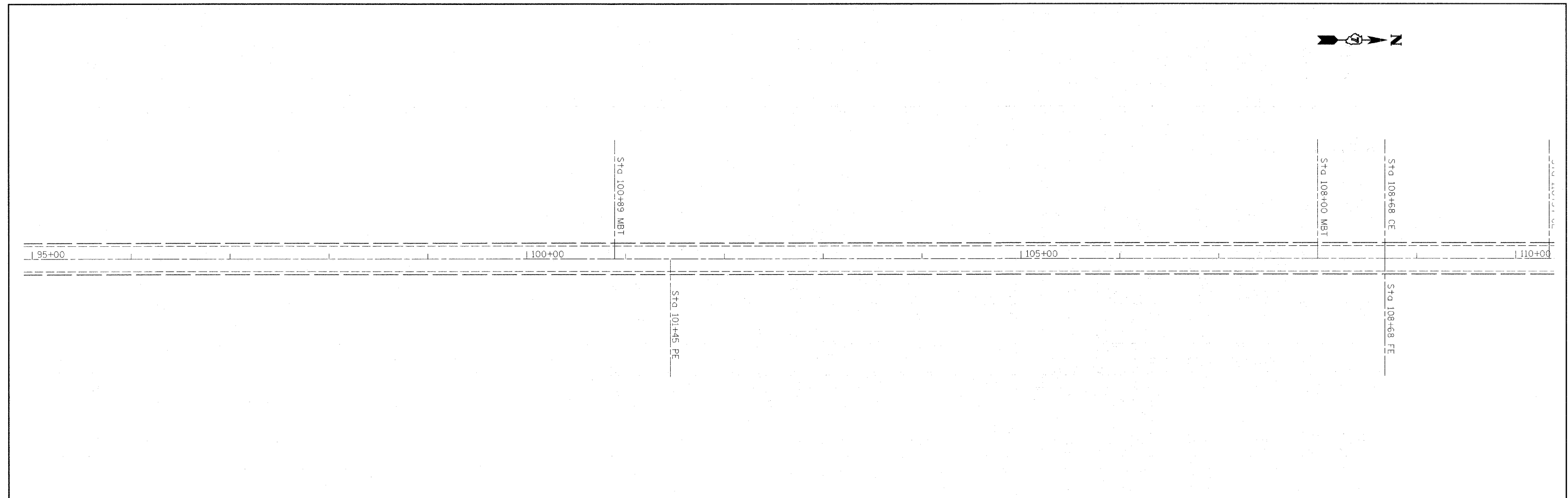


180+00 | 85+00 | 90+00 | 95+00

Sta. 83+44 PRA

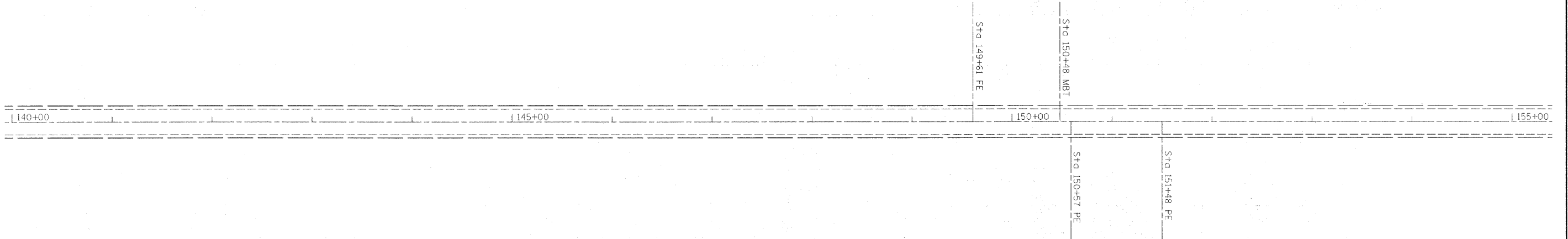
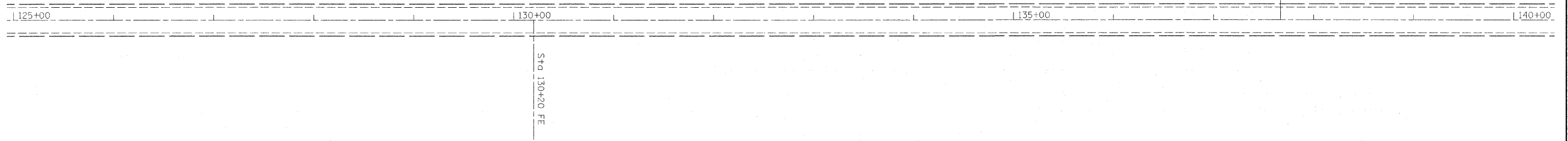
Sta. 83+44 PRA

FILE NAME = c:\pw_work\PWIDOT\SWARTZRW\dms50687\d74263-sht-50p1en.dgn	USER NAME = swartzrw	DESIGNED -	REVISED -	<b>STATE OF ILLINOIS DEPARTMENT OF TRANSPORTATION</b>	<b>PLAN SHEETS</b>			F.A.P. RTE. 820	SECTION (22,5)RS-2	COUNTY COLES	TOTAL SHEETS 22	SHEET NO. 15
	PLOT SCALE = 50,0000' / IN.	CHECKED -	REVISED -					CONTRACT NO. 74263				
	PLOT DATE = 10/9/2008	DATE -	REVISED -					SCALE: 50	SHEET NO. 6 OF 10 SHEETS	STA. 65+00 TO STA. 95+00	FED. ROAD DIST. NO. ILLINOIS FED. AID PROJECT	



FILE NAME = c:\pw\work\PWIDOT\SWARTZR\dms50687\74263-shr-50p1en.dgn	USER NAME = swartzr	DESIGNED -	REVISED -	<b>STATE OF ILLINOIS DEPARTMENT OF TRANSPORTATION</b>	<b>PLAN SHEETS</b>			F.A.P. RTE.	SECTION	COUNTY	TOTAL SHEETS	SHEET NO.
	PLOT SCALE = 50.0000' / IN.	CHECKED -	REVISED -					820	(22,5)RS-2	COLES	22	16
FLOT DATE = 10/9/2008	DATE -	REVISED -	SCALE: 50		SHEET NO. 7 OF 10 SHEETS	STA. 95+00	TO STA. 125+00	FED. ROAD DIST. NO. ILLINOIS FED. AID PROJECT				
							CONTRACT NO. 74263					





FILE NAME =	USER NAME = swartzw	DESIGNED -	REVISED -
ct:\pw\work\PWIDOT\SWARTZW\dms50687\d74263-sh1-50p1an.dgn		DRAWN -	REVISED -
	PLOT SCALE = 50.0000' / IN.	CHECKED -	REVISED -
	PLOT DATE = 10/9/2008	DATE -	REVISED -

**STATE OF ILLINOIS  
DEPARTMENT OF TRANSPORTATION**

**PLAN SHEETS**

SCALE: 50 SHEET NO. 8 OF 10 SHEETS STA. 125+00 TO STA. 155+00

F.A.P. RTE.	SECTION	COUNTY	TOTAL SHEETS	SHEET NO.
820	(22,5)RS-2	COLES	22	17
FED. ROAD DIST. NO. ILLINOIS FED. AID PROJECT			CONTRACT NO. 74263	



155+00 160+00 165+00 170+00



170+00 175+00 180+00 185+00

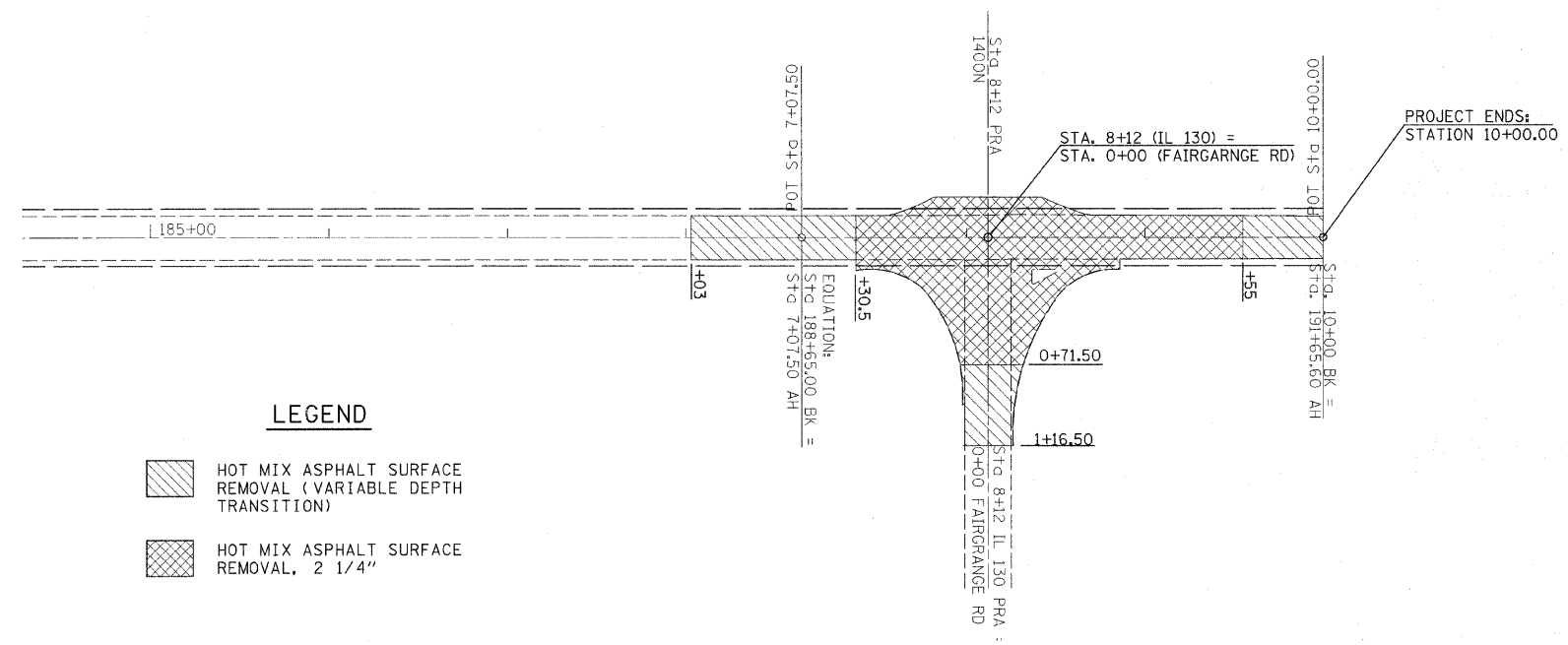
Sta. 173+93 PE  
Sta. 175+90 MBT  
Sta. 176+13 PE  
Sta. 173+50 FE

FILE NAME =	USER NAME = swartzw	DESIGNED -	REVISED -
ct:\pw_work\PIWIDOT\SWARTZRW\dms50687\d74263-sh-t-58p1en.dgn		DRAWN -	REVISED -
	PLOT SCALE = 50.0000' / IN.	CHECKED -	REVISED -
	PLOT DATE = 10/9/2008	DATE -	REVISED -

**STATE OF ILLINOIS  
DEPARTMENT OF TRANSPORTATION**

**PLAN SHEETS**  
SCALE: 50 SHEET NO. 9 OF 10 SHEETS STA. 155+00 TO STA. 185+00

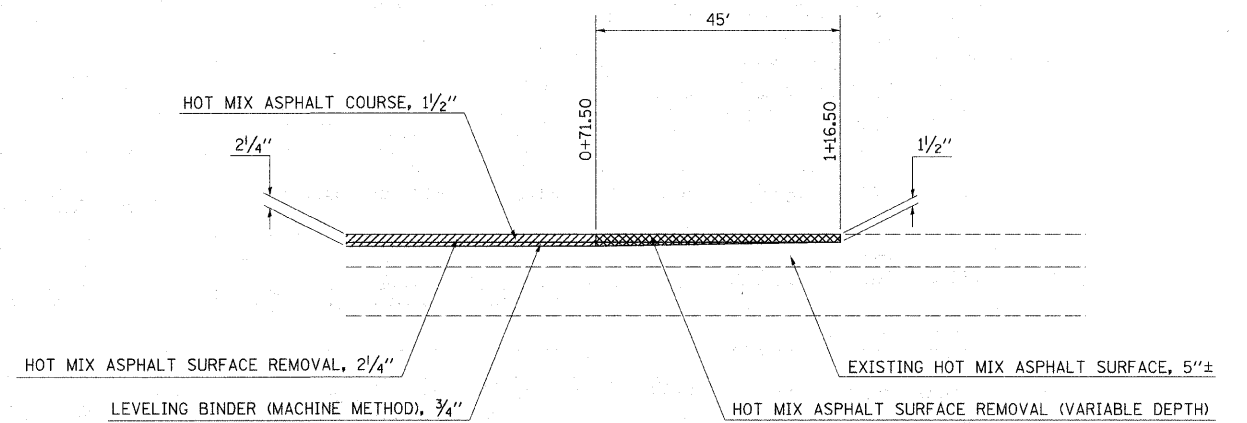
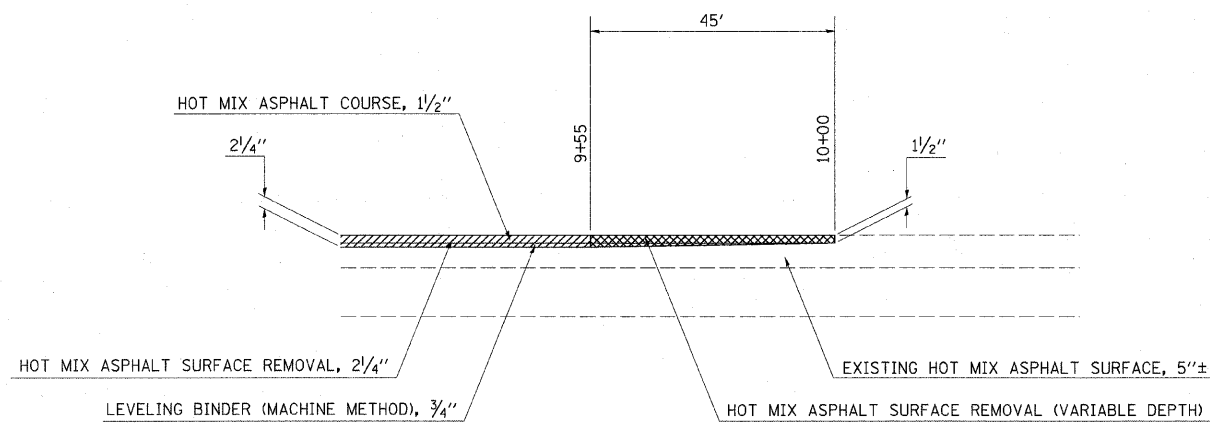
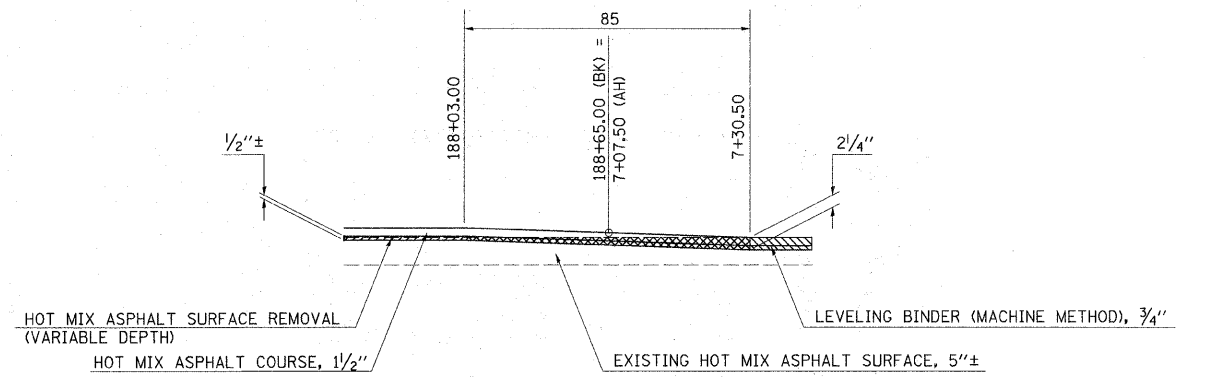
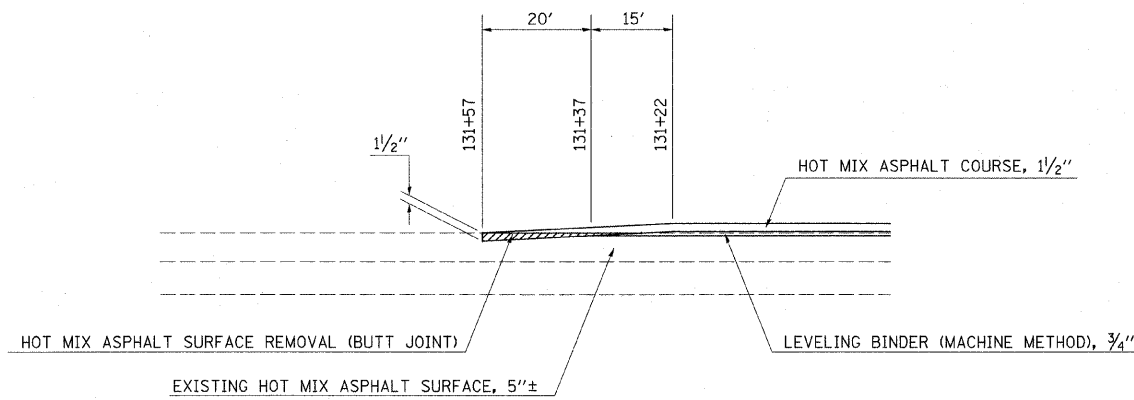
F.A.P. RTE.	SECTION	COUNTY	TOTAL SHEETS	SHEET NO.
820	(22,5)RS-2	COLES	22	18
FED. ROAD DIST. NO. ILLINOIS FED. AID PROJECT			CONTRACT NO. 74263	



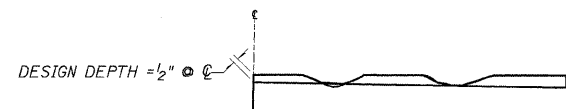
**LEGEND**

- HOT MIX ASPHALT SURFACE REMOVAL ( VARIABLE DEPTH TRANSITION)
- HOT MIX ASPHALT SURFACE REMOVAL, 2 1/4"

FILE NAME =	USER NAME = swartzw	DESIGNED -	REVISED -	<b>STATE OF ILLINOIS DEPARTMENT OF TRANSPORTATION</b>	<b>PLAN SHEETS</b>	F.A.P. RTE.	SECTION	COUNTY	TOTAL SHEETS	SHEET NO.
ct\pw\work\PWIDOT\SWARTZR\dms50687\d74263-shr-50p1en.dgn	74263-shr-50p1en.dgn	DRAWN -	REVISED -			820	(22,5)RS-2	COLES	22	19
	PLOT SCALE = 50,0000' / IN.	CHECKED -	REVISED -						CONTRACT NO. 74263	
	PLOT DATE = 10/9/2008	DATE -	REVISED -		SCALE: 50	SHEET NO. 10 OF 10 SHEETS		STA. 185+00 TO STA. 191+65		FED. ROAD DIST. NO. ILLINOIS FED. AID PROJECT



**FAIRGRANGE ROAD**

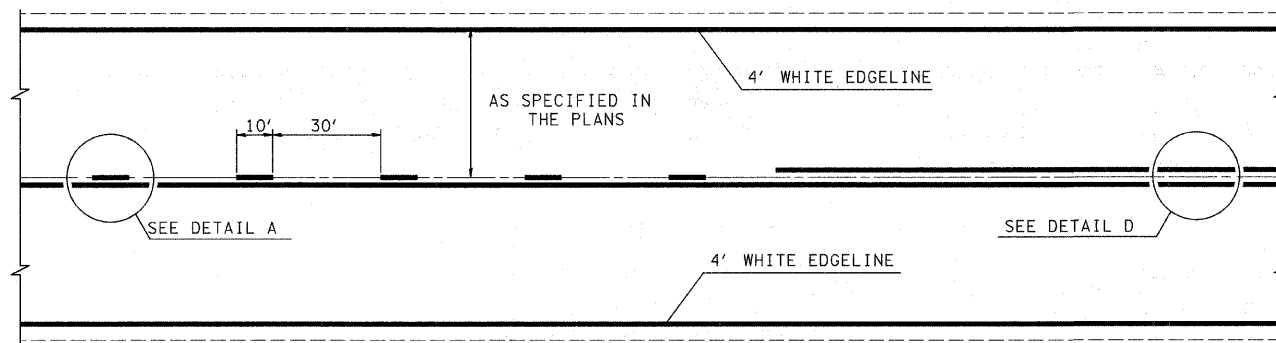


**NOTES:**

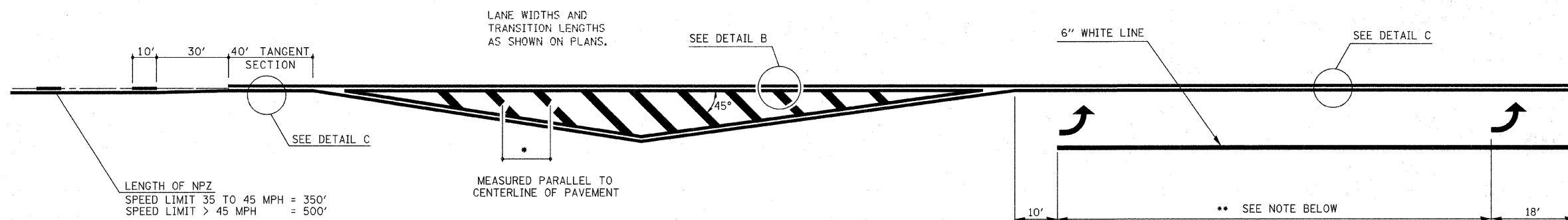
1. MILLING SHALL BE DONE TO ATTAIN A 3/16" /' SLOPE IN CROWN SECTIONS
2. EXISTING S.E. AND S.E. TRANSITIONS SHALL BE MAINTAINED UNLESS OTHERWISE SHOWN ON THE PLANS.
3. MILLING TO THE BOTTOM OF WHEEL RUTS SHALL NOT BE NECESSARY UNLESS REQUIRED TO OBTAIN SLOPE OR THE DESIGN DEPTH AT CENTERLINE.
4. THE AVERAGE DEPTH OF MILLING IS ESTIMATED TO BE 1/2" BUT MAY VARY IN ISOLATED LOCATIONS.

**HOT MIX ASPHALT SURFACE REMOVAL (VARIABLE DEPTH) DETAIL**

FILE NAME =	USER NAME = swartzrw	DESIGNED -	REVISED -	<b>STATE OF ILLINOIS DEPARTMENT OF TRANSPORTATION</b>	<b>BUTT JOINT AND TRANSITION DETAILS</b>			F.A.P. RTE.	SECTION	COUNTY	TOTAL SHEETS	SHEET NO.
cs:\pw\work\FWIDOT\SWARTZRW\dms50687\74263-shit-details.dgn	PLOT SCALE = 50,0000' / IN.	DRAWN -	REVISED -					820	(22,5)RS-2	COLES	22	20
	PLOT DATE = 10/9/2008	CHECKED -	REVISED -		SCALE: NA SHEET NO. 1 OF 1 SHEETS STA. TO STA.			CONTRACT NO. 74263				
		DATE -	REVISED -		FED. ROAD DIST. NO.		ILLINOIS FED. AID PROJECT					



TYPICAL CENTERLINE, NO PASSING ZONE LINE (NPZ) & EDGELINE MARKINGS  
2-LANE PAVEMENT



LENGTH OF NPZ  
SPEED LIMIT 35 TO 45 MPH = 350'  
SPEED LIMIT > 45 MPH = 500'

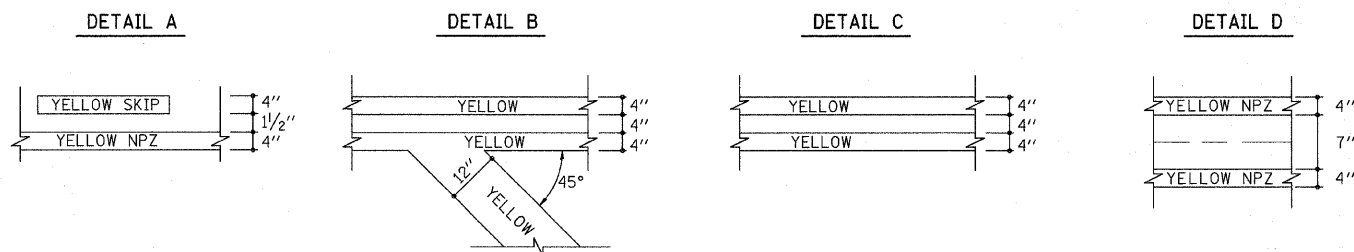
•DIAGONAL SPACING

SPEED LIMIT < 30 MPH = 15'  
SPEED LIMIT 30 TO 45 MPH = 20'  
SPEED LIMIT > 45 MPH = 30'

\*\* PLACE THE FIRST ARROW EVEN WITH THE BEGINNING OF THE TURN BAY.  
PLACE ANOTHER ARROW 18' BACK FROM THE STOP BAR. IF REQUIRED,  
ADD ADDITIONAL ARROWS TO MAINTAIN A MAXIMUM OF 80' SPACING.

NOTES:

1. OMIT EDGELINE THRU SIDE ROADS.
2. TAPER RATES, LANE WIDTHS, AND STORAGE LENGTHS AS SHOWN ON THE PLANS.
3. WHEN MEDIANS ARE PRESENT, PLACE A SINGLE YELLOW STRIPE AROUND ITS PERIMETER.

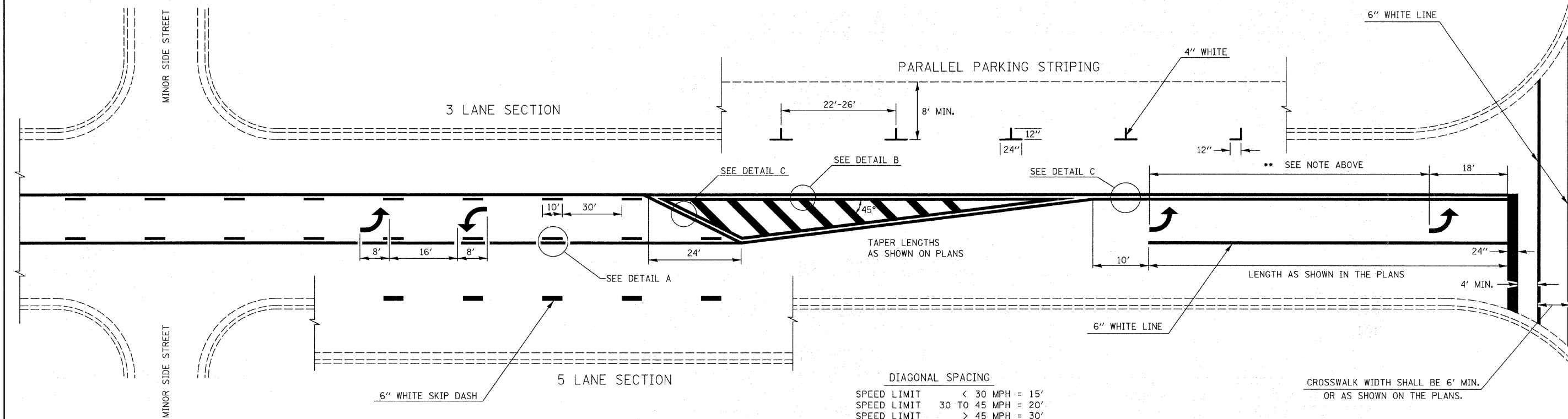


NOT TO SCALE

TYPICAL APPLICATION OF  
PAVEMENT MARKINGS  
SHEET 1 OF 2

FILE NAME =	USER NAME = swartzw	DESIGNED -	REVISED -	<b>STATE OF ILLINOIS DEPARTMENT OF TRANSPORTATION</b>	<b>PAVEMENT MARKING DETAIL</b>		F.A.P. RTE.	SECTION	COUNTY	TOTAL SHEETS	SHEET NO.
cs:\pw\work\PIWIDOT\SWARTZRW\dms50687\d74263-sh1-deta1s.dgn	PLOT SCALE = 50.0000' / IN.	DRAWN -	REVISED -				820	(22,5)RS-2	COLES	22	21
	PLOT DATE = 10/9/2008	CHECKED -	REVISED -		SCALE: NA	SHEET NO. 1 OF 2 SHEETS	STA.	TO STA.	CONTRACT NO. 74263		
		DATE -	REVISED -				FED. ROAD DIST. NO.	ILLINOIS FED. AID PROJECT			

\*\* PLACE THE FIRST ARROW EVEN WITH THE BEGINNING OF THE TURN BAY.  
 PLACE ANOTHER ARROW 18' BACK FROM THE STOP BAR, IF REQUIRED.  
 ADD ADDITIONAL ARROWS TO MAINTAIN A MAXIMUM OF 80' SPACING.



DIAGONAL SPACING

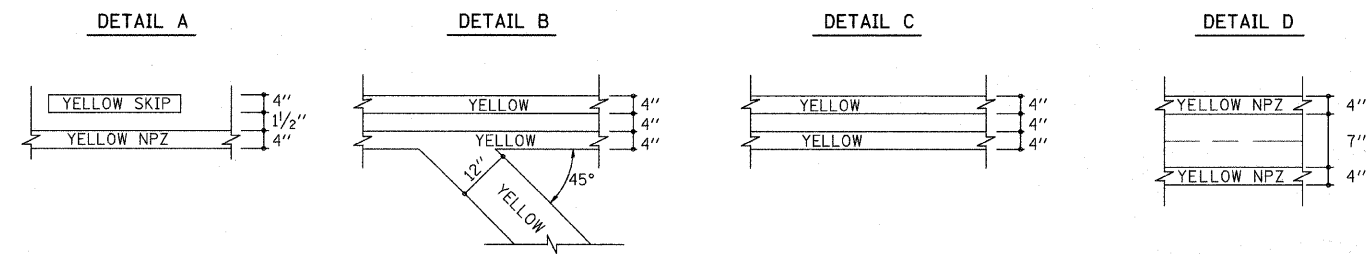
SPEED LIMIT	< 30 MPH	= 15'
SPEED LIMIT	30 TO 45 MPH	= 20'
SPEED LIMIT	> 45 MPH	= 30'

CROSSWALK WIDTH SHALL BE 6' MIN.  
 OR AS SHOWN ON THE PLANS.

**TYPICAL BI-DIRECTIONAL TURN LANE MARKINGS**  
 (SHOWING TRANSITION TO EXCLUSIVE LEFT TURN LANE)

NOTES:

1. NO LESS THAN 2 ARROWS SHALL BE USED.
2. TAPER RATES, LANE WIDTHS, AND STORAGE LENGTHS AS SHOWN ON THE PLANS.
3. AVOID PLACING BI-DIRECTIONAL ARROWS IN INTERSECTIONS.
4. BI-DIRECTIONAL ARROWS SHALL BE SPACED A MAXIMUM OF 250'.



NOT TO SCALE

**TYPICAL APPLICATION OF PAVEMENT MARKINGS**  
**SHEET 2 OF 2**

FILE NAME =	USER NAME = swartzr	DESIGNED -	REVISED -	<b>STATE OF ILLINOIS DEPARTMENT OF TRANSPORTATION</b>	<b>PAVEMENT MARKING DETAIL</b>			F.A.P. RTE.	SECTION	COUNTY	TOTAL SHEETS	SHEET NO.
cd:\pw\work\PIWIDOT\SWARTZRW\dms50687\d74263-sh1t-details.dgn	74263-sh1t-details.dgn	DRAWN -	REVISED -					820	(22,5)RS-2	COLES	22	22
PLOT SCALE = 50,0000' / IN.		CHECKED -	REVISED -		SCALE: NA SHEET NO. 2 OF 2 SHEETS STA. TO STA.			CONTRACT NO. 74263				
PLOT DATE = 10/9/2008		DATE -	REVISED -		FED. ROAD DIST. NO.		ILLINOIS FED. AID PROJECT					