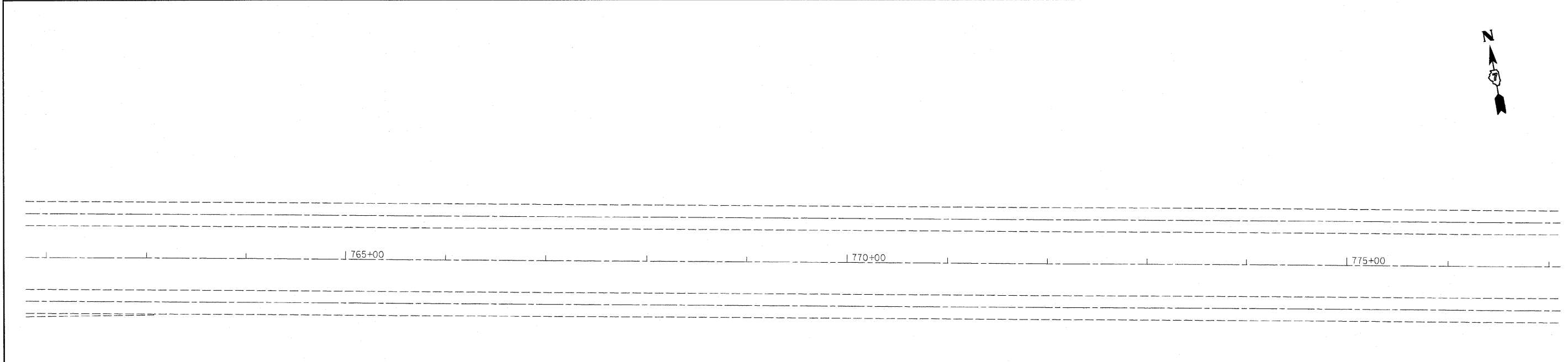
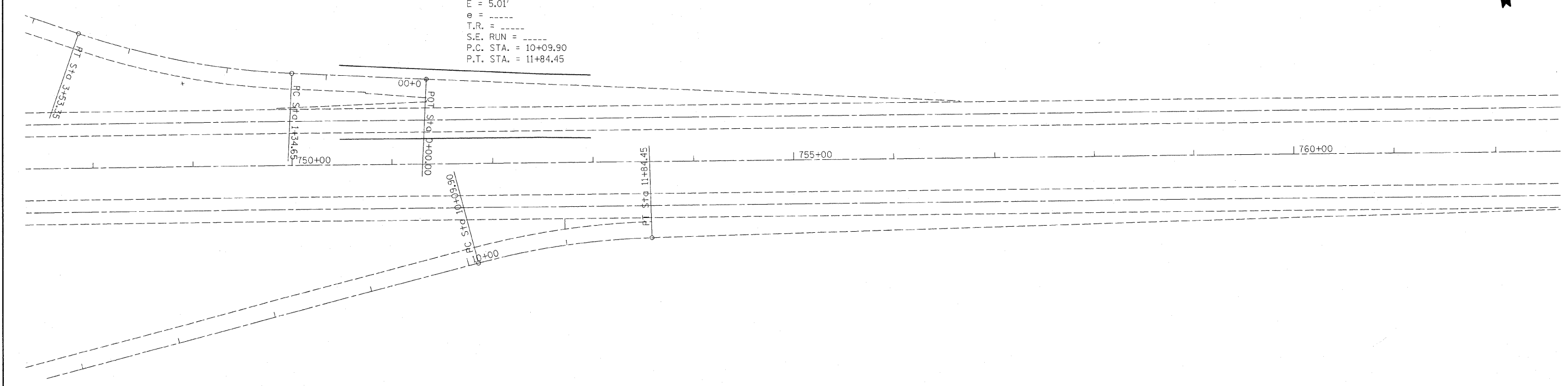


EXIST. CURVE I1  
 PI STA. = 10+97.56  
 $\Delta = 13^\circ 05' 28''$  (RT)  
 D = 7° 30' 00"  
 R = 763.95'  
 T = 87.66'  
 L = 174.55'  
 E = 5.01'  
 e = -----  
 T.R. = -----  
 S.E. RUN = -----  
 P.C. STA. = 10+09.90  
 P.T. STA. = 11+84.45



FILE NAME =	USER NAME = swartzw	DESIGNED -	REVISED -	<b>STATE OF ILLINOIS DEPARTMENT OF TRANSPORTATION</b>	<b>DOUBLE PLAN SHEET</b>			F.A.P. RTE.	SECTION	COUNTY	TOTAL SHEETS	SHEET NO.
ca:\pw_work\pwsdot\swartzw\dms58597\d77	308-sht-50plan.dgn	DRAWN -	REVISED -					327	(51-23-1,51-24)RS-1	LAWRENCE	47	24
	PLOT SCALE = 50,0000' / IN.	CHECKED -	REVISED -		SCALE: 50			CONTRACT NO. 74308				
	PLOT DATE = 10/14/2008	DATE -	REVISED -		SHEET NO. 9 OF 10 SHEETS STA. 748+00 TO STA. 777+00			FED. ROAD DIST. NO. ILLINOIS FED. AID PROJECT				