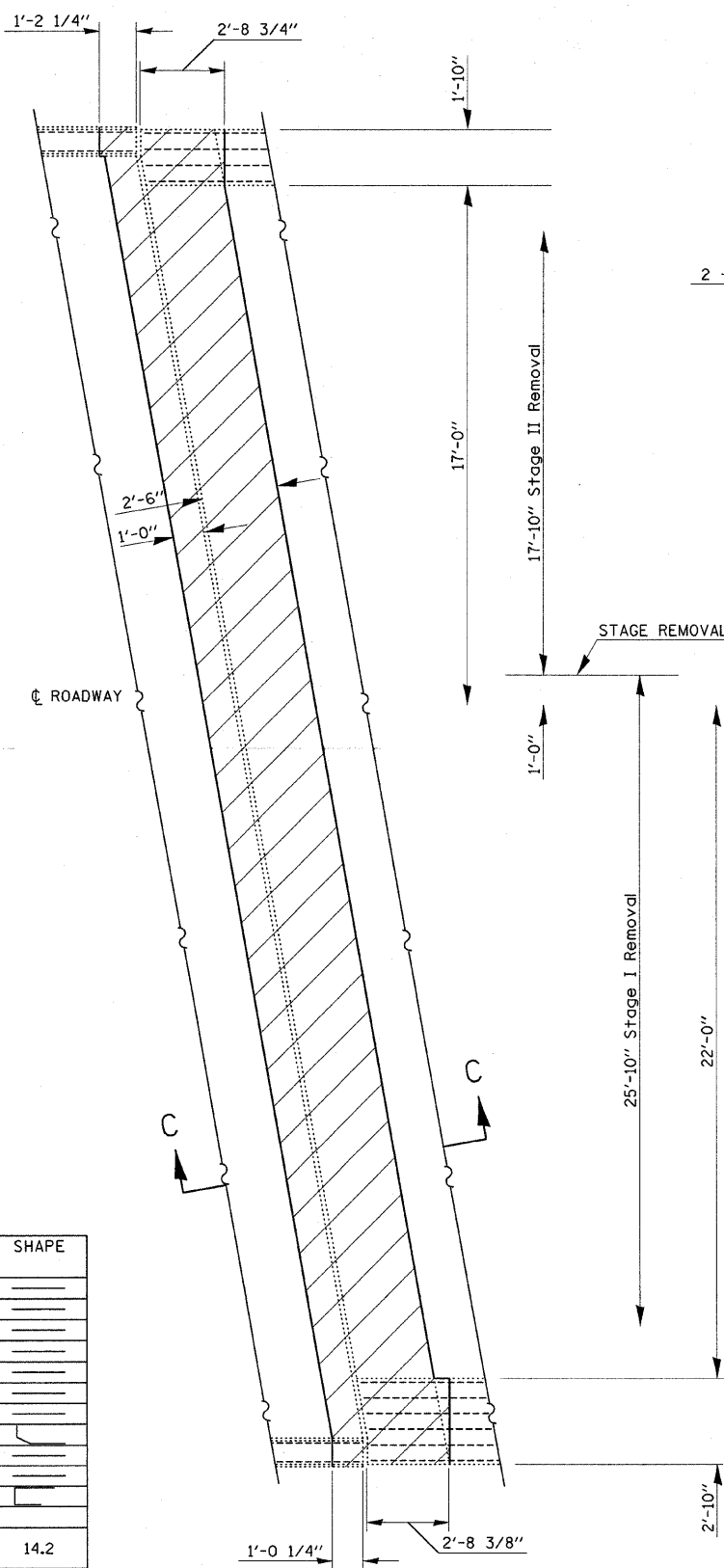


**BILL OF MATERIAL**

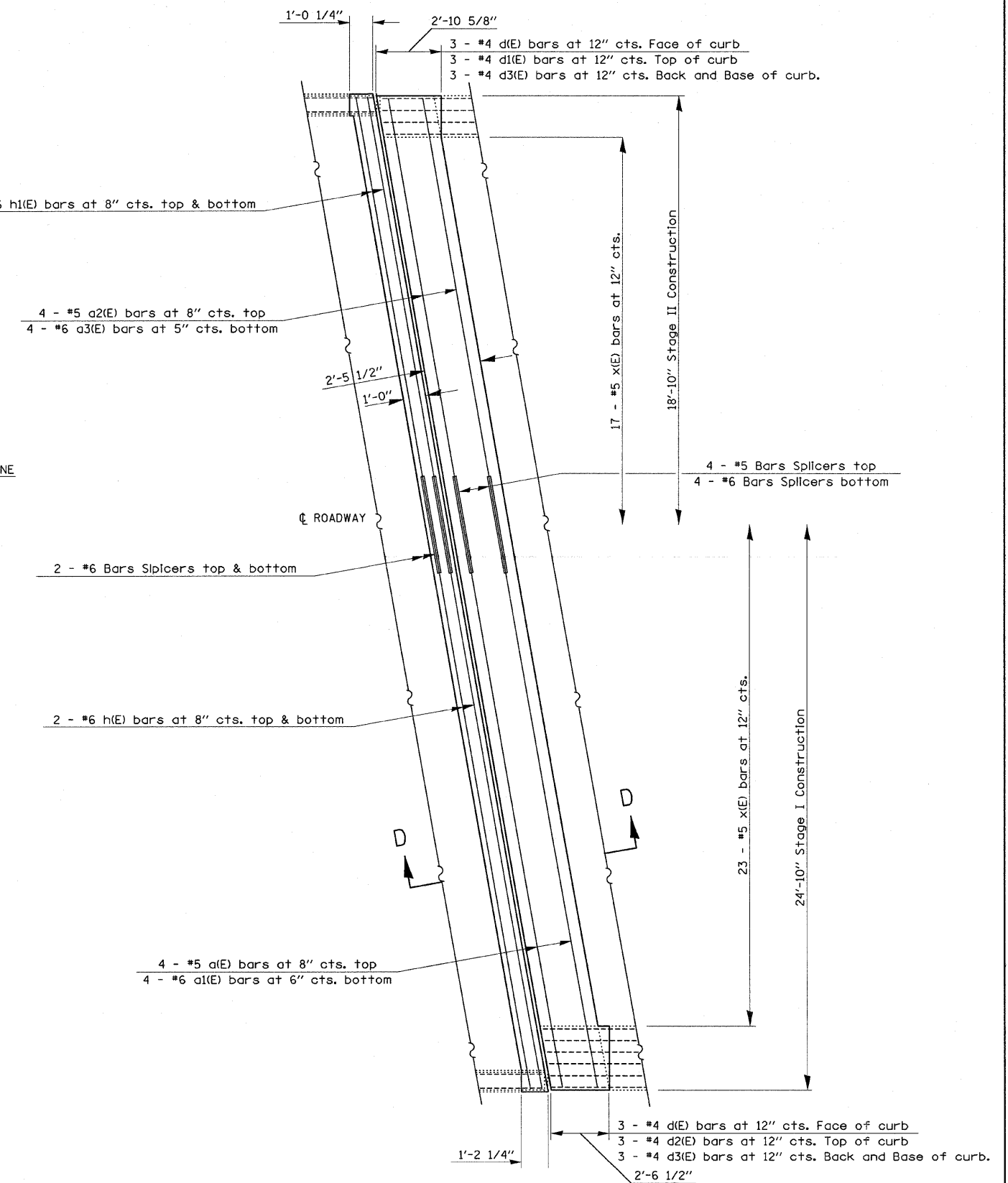
BAR	NUMBER OF BARS		TOTAL	SIZE	LENGTH	SHAPE
	STAGE I	STAGE II				
a(E)	8		8	#5	24' - 11"	—
a1(E)	8		8	#6	24' - 11"	—
a2(E)		8	8	#5	18' - 10"	—
a3(E)		8	8	#6	18' - 10"	—
d(E)	6	6	12	#4	1' - 3"	—
d1(E)	6		6	#4	2' - 6"	—
d2(E)		6	6	#4	1' - 6"	—
d3(E)	6	6	12	#4	4' - 0"	—
h(E)	8		8	#6	24' - 11"	—
h1(E)	8		8	#6	18' - 10"	—
x(E)	46	34	80	#5	4' - 9"	—

CONCRETE REMOVAL	CU. YD.	14.2
REINFORCEMENT BARS (EPOXY COATED)	POUND	1880.0
CONCRETE SUPERSTRUCTURE	CU. YD.	14.1

REINFORCEMENT BARS DESIGNATED (E) SHALL BE EPOXY COATED



**EXISTING PARTIAL PLAN**  
(West Abutment shown; East Abutment similar)



**PROPOSED PARTIAL PLAN**  
(West Abutment shown; East Abutment similar)

For section C-C and D-D, see sheet 5 of 15.