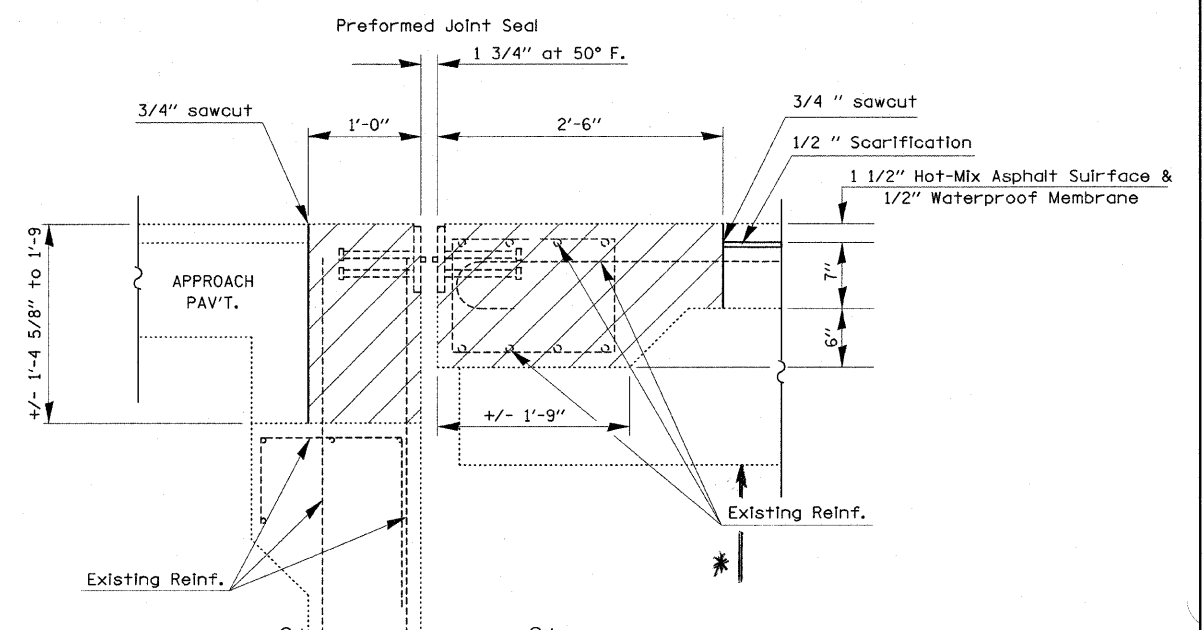


EXISTING EXPANSION JOINTS AT ABUTMENTS
051-0016

SECTION A-A
(Dimensions at RT L's to end of deck)



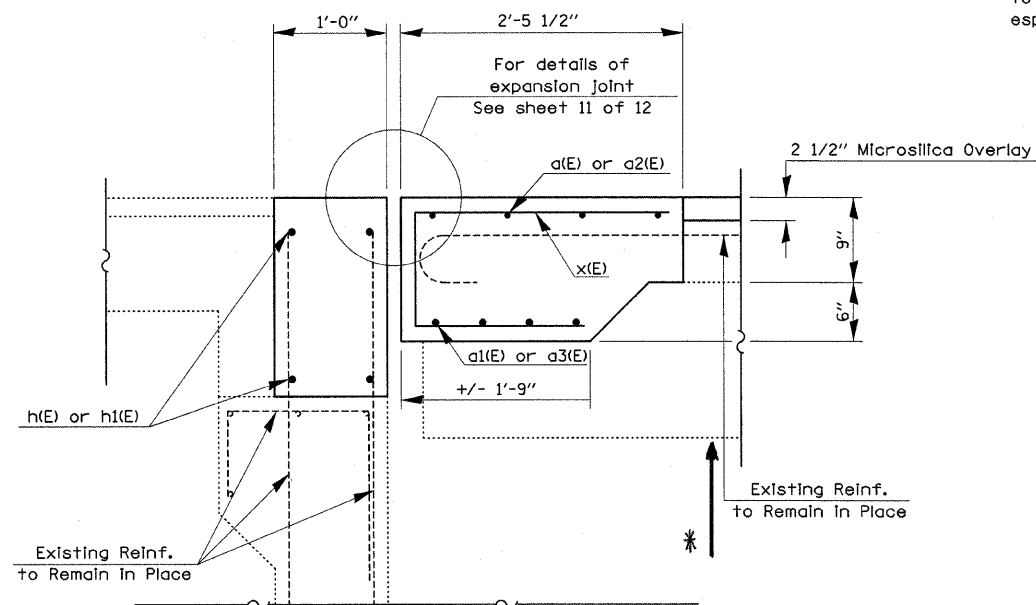
EXISTING EXPANSION JOINTS AT ABUTMENTS
051-0017

SECTION C-C
(Dimensions at RT L's to end of deck)

Dimensions are based on a Rolled Rail Strip Seal Joint. If the contractor elects to use the Welded Rail Strip Seal Joint, deck dimensions may require adjustments to satisfy the details on Base Sheet EJ-SSJ.

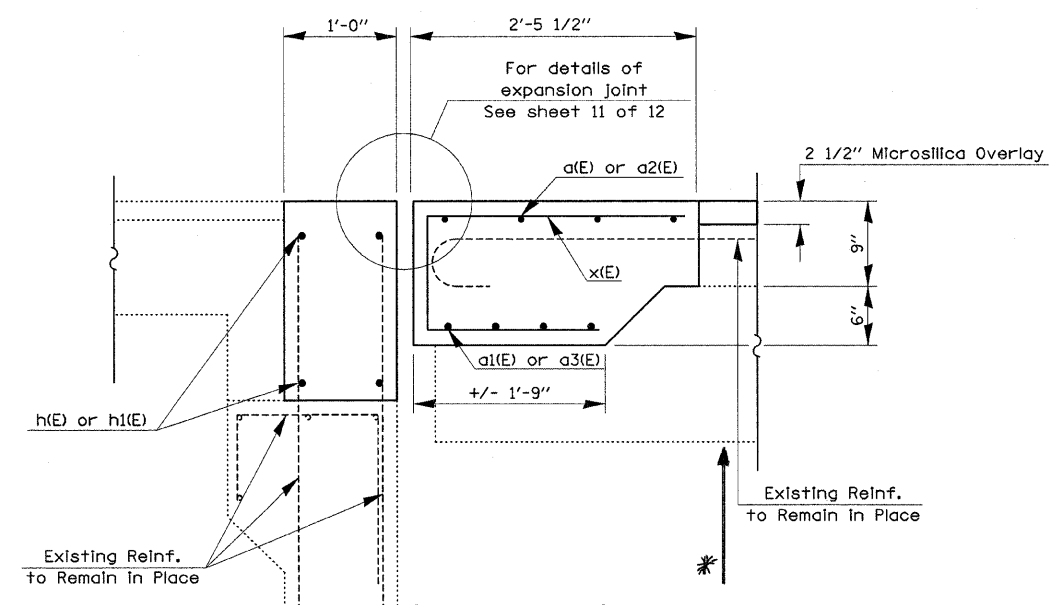
* Jacking and cribbing are required for bearing replacement and expansion joint replacement. Cribbing shall not be removed until bearings are replaced and concrete has cured.

Contractors must ensure that no damage is done to existing reinforcement that is to remain, especially vertical reinforcement on stem of T-girder.



PROPOSED EXPANSION JOINTS AT ABUTMENTS
051-0016

SECTION B-B
(Dimensions at RT L's to end of deck)



PROPOSED EXPANSION JOINTS AT ABUTMENTS
051-0017

SECTION D-D
(Dimensions at RT L's to end of deck)

○ Existing Reinforcement
● Proposed Reinforcement

FILE NAME =	USER NAME = swartzrw	DESIGNED -	REVISED -	STATE OF ILLINOIS DEPARTMENT OF TRANSPORTATION	EXPANSION JOINT REPLACEMENT DETAILS SN. 051-0016 (WB) & SN 051-0017 (EB)	F.A.P. RTE.	SECTION	COUNTY	TOTAL SHEETS	SHEET NO.	
as:\pw_work\PIWIDOT\SWARTZRW\dms50697\sh	plan_74308.dgn	DRAWN -	REVISED -			327	(51-23-1, 51-24)RS-1	LAWRENCE	47	37	
	PLOT SCALE = 20,0000 ' / IN.	CHECKED -	REVISED -			SCALE: N/A		SHEET NO. 5 OF 15 SHEETS		STA. TO STA.	
	PLOT DATE = 10/14/2008	DATE -	REVISED -			FED. ROAD DIST. NO.		ILLINOIS FED. AID PROJECT		CONTRACT NO. 74308	