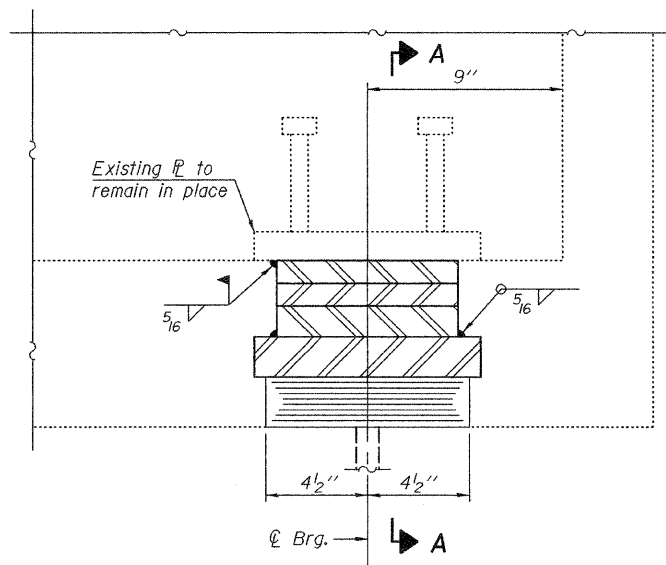


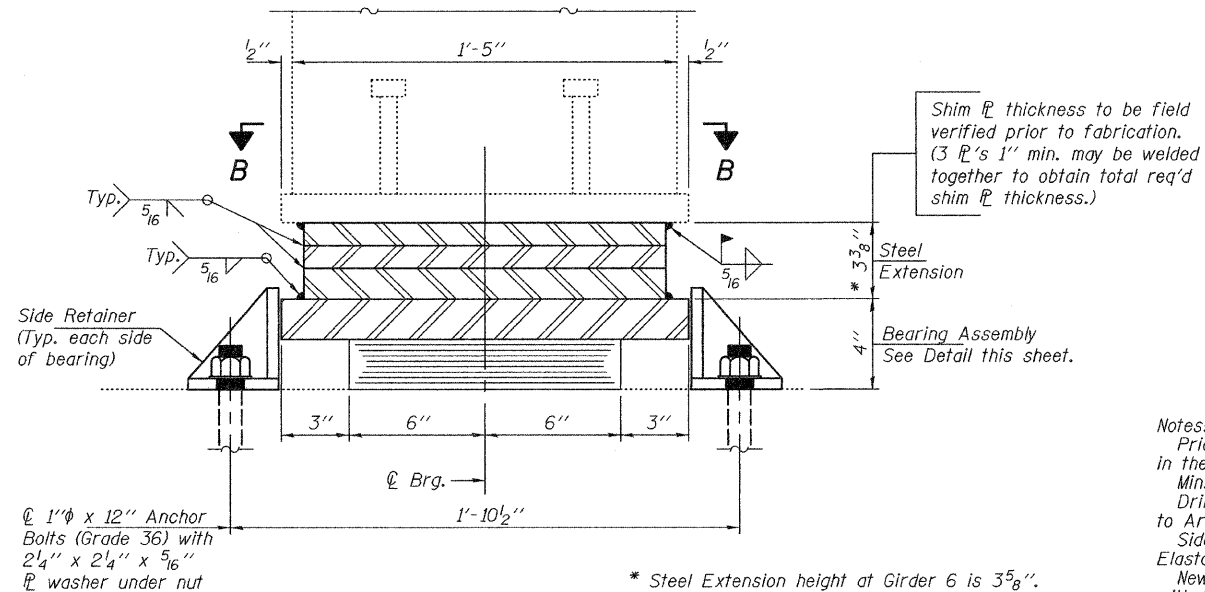
STATE OF ILLINOIS
DEPARTMENT OF TRANSPORTATION

ROUTE NO.	SECTION	COUNTY	SHEETS	SHEET	SHEET NO. 2 2 SHEETS
FAP 327	*	LAWRENCE	47	47	
FED. ROAD DIST. NO. 7		ILLINOIS	FED. AID PROJECT		

Contract Number: 74308
* (51-23-1, 51-24) RS-1

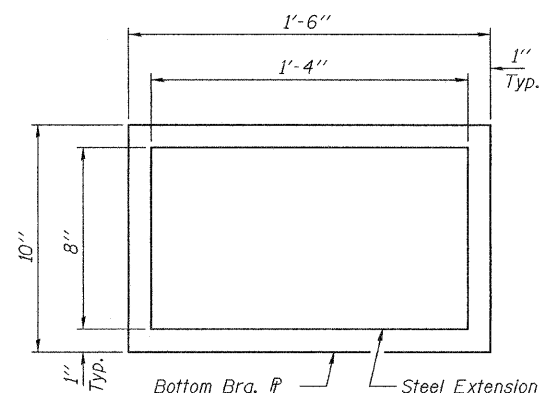


ELEVATION AT ABUTMENT



SECTION A-A

Notes:
Prior to ordering any material, the Contractor shall verify in the field all bearing height and shim thickness dimensions. Min. jack capacity = 30 Tons.
Drilled and set anchor bolts shall be installed according to Article 521.06 of the Standard Specifications.
Side Retainers shall be included in the cost of Elastomeric Bearing Assembly, Type I.
New steel extensions and shim plates are included with Furnishing and Erecting Structural Steel.
Anchor bolts shall be ASTM F1554 all thread (or an Engineer-approved alternate material) of the grade(s) and diameter(s) specified. ASTM A307 Grade C anchor bolts may be used in lieu of ASTM F1554 Grade 36 (Fy=36ksi). The corresponding specified grade of AASHTO M314 anchor bolts may be used in lieu of ASTM F1554.

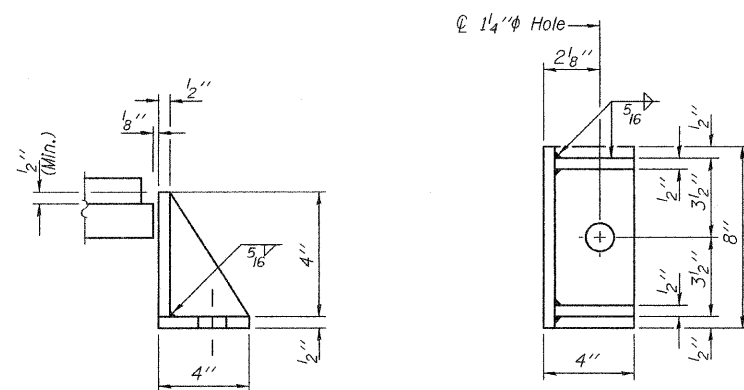


VIEW B-B

Side Retainers and existing R not shown for clarity.

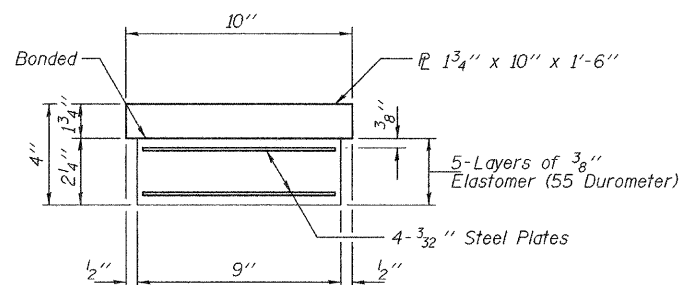
BEAM REACTIONS

R _φ	(K)	16.2
R _±	(K)	30.3
Imp.	(K)	9.1
R (Total)	(K)	55.6



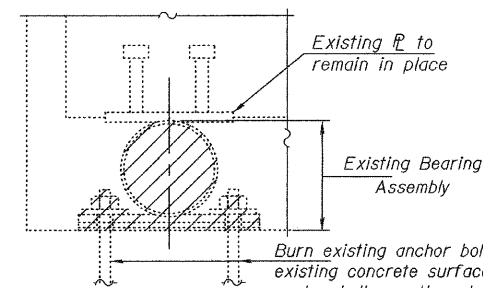
SIDE RETAINER

Equivalent rolled angle with stiffeners will be allowed in lieu of welded plates.



BEARING ASSEMBLY

Note:
Shim plates shall not be placed under Bearing Assembly.



EXISTING BEARING REMOVAL DETAIL

Cost included with Jack and Remove Existing Bearings.

BILL OF MATERIAL

Item	Unit	Total
Elastomeric Bearing Assembly, Type I	Each	28
Jack and Remove Existing Bearings	Each	28
Furnishing and Erecting Structural Steel	Pound	3460
Anchor Bolts, 1"φ	Each	56

BEARING REPLACEMENT DETAILS

F.A.P. ROUTE 327 (US 50)

LAWRENCE COUNTY

SN 051-0016 (WB) & 0017 (EB)

DESIGNED	AJB
CHECKED	GGE
DRAWN	Kyle M. Steffen
CHECKED	AJB GGE

NOVEMBER 14, 2008
EXAMINED *A. Carl Honey*
ENGINEER OF STRUCTURAL SERVICES
PASSED *Ralph E. Anderson*
ENGINEER OF BRIDGES AND STRUCTURES