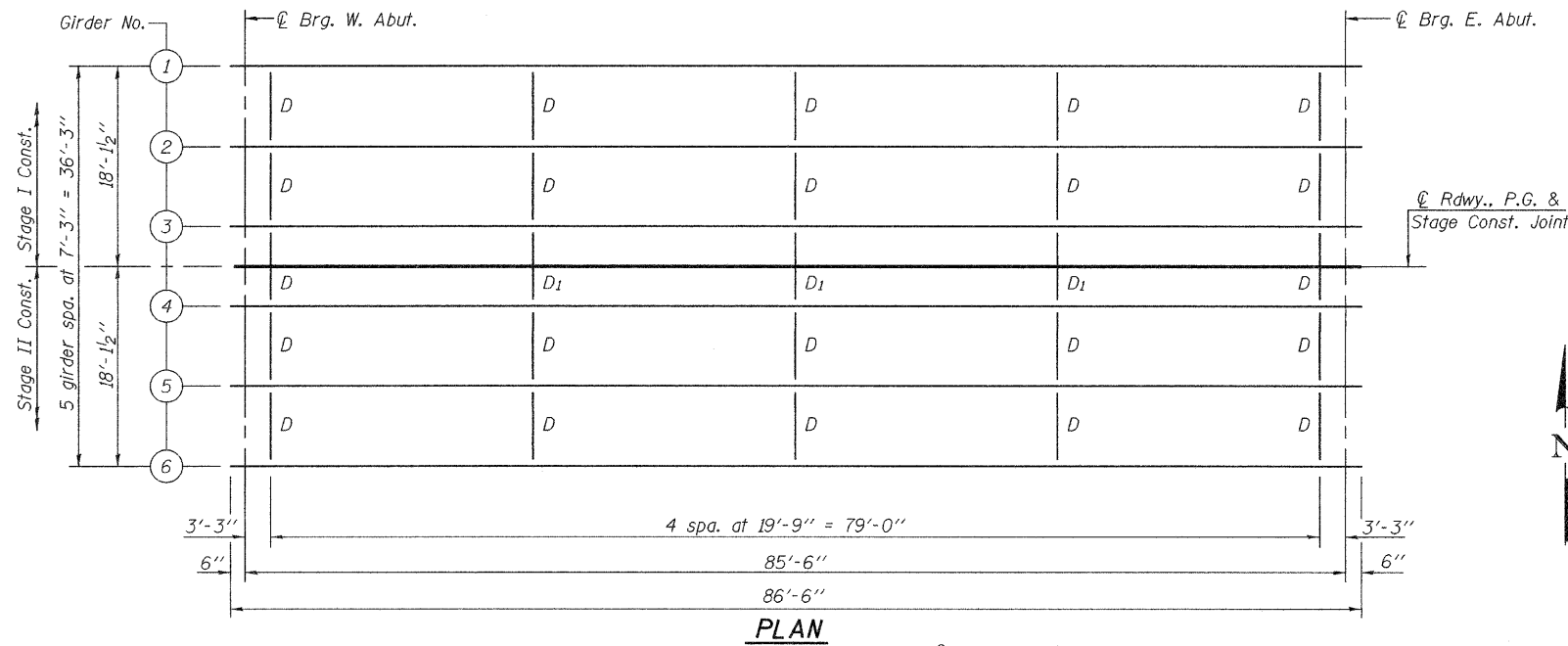


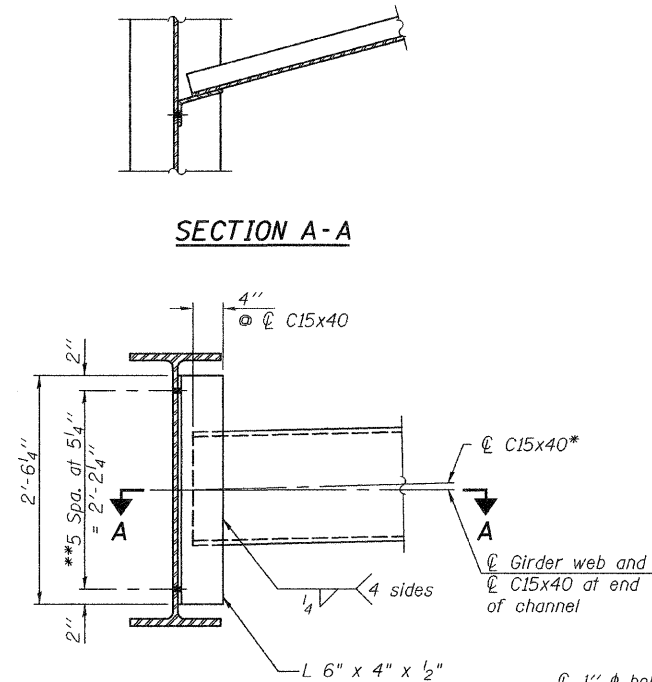
STATE OF ILLINOIS
DEPARTMENT OF TRANSPORTATION

| | | | | | |
|---------------------------|------------------|----------------------------|--------------------|-----------------|---------------------------|
| ROUTE NO. F.A.P. 42 | SECTION 139BR | COUNTY BOND | TOTAL SHEETS 59 | SHEET NO. 46 | SHEET NO. 13 19 SHEETS |
| FED. ROAD DIST. NO. 7 | | ILLINOIS FED. AID PROJECT- | | | |

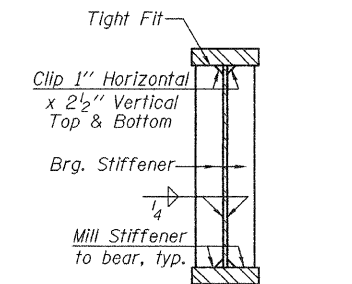
Contract #76391



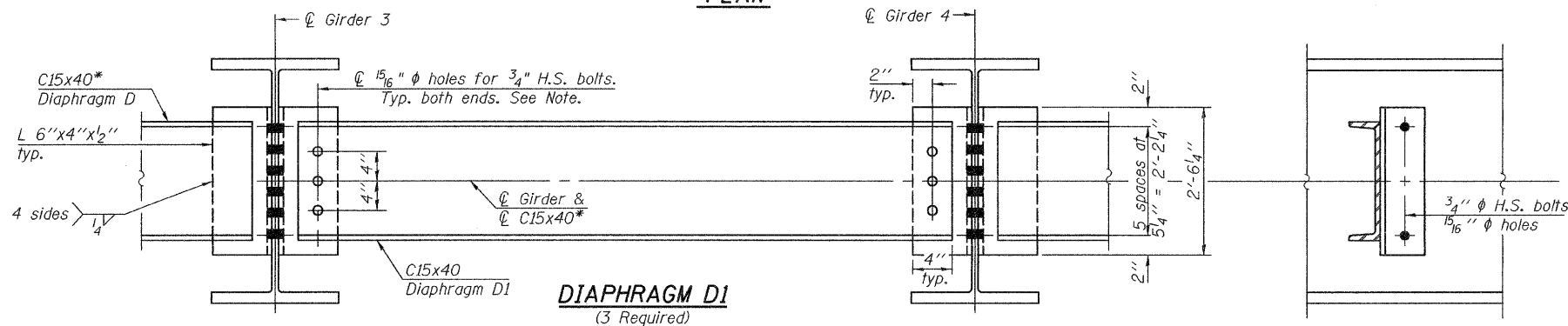
PLAN



SECTION A-A



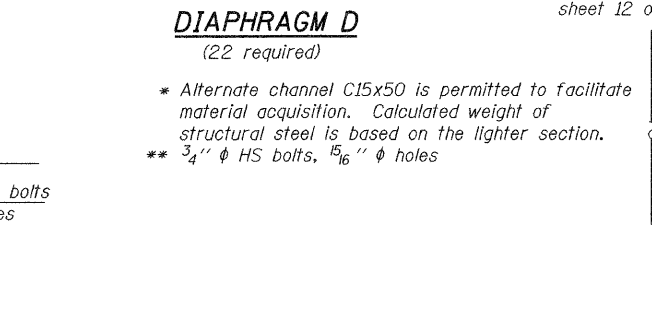
SECTION THRU ABUTMENT



DIAPHRAGM D1
(3 Required)

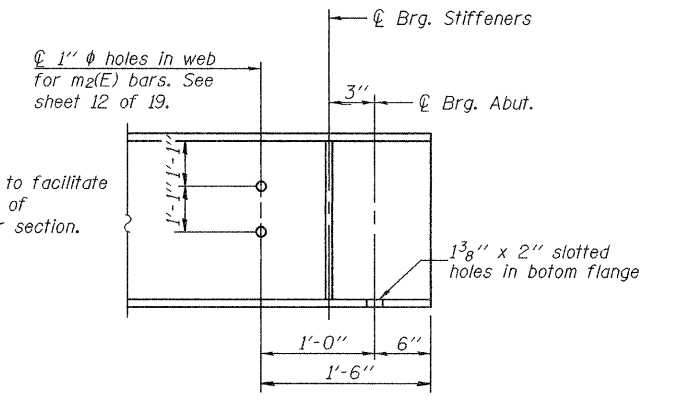
Note: Install only the center bolt at each end of Diaphragm D1. The bolts shall be finger tightened prior to deck pour to permit rotation of Diaphragm D1. Install the remaining bolts and fully tighten after stage two deck pour is complete.

Notes:
Load carrying components designated "NTR" shall conform to the Supplemental Requirements for Notch Toughness, Zone 2.
Two hardened washers required for each set of oversized holes.
All diaphragms shall be installed as steel is erected and secured with erection pins and bolts.

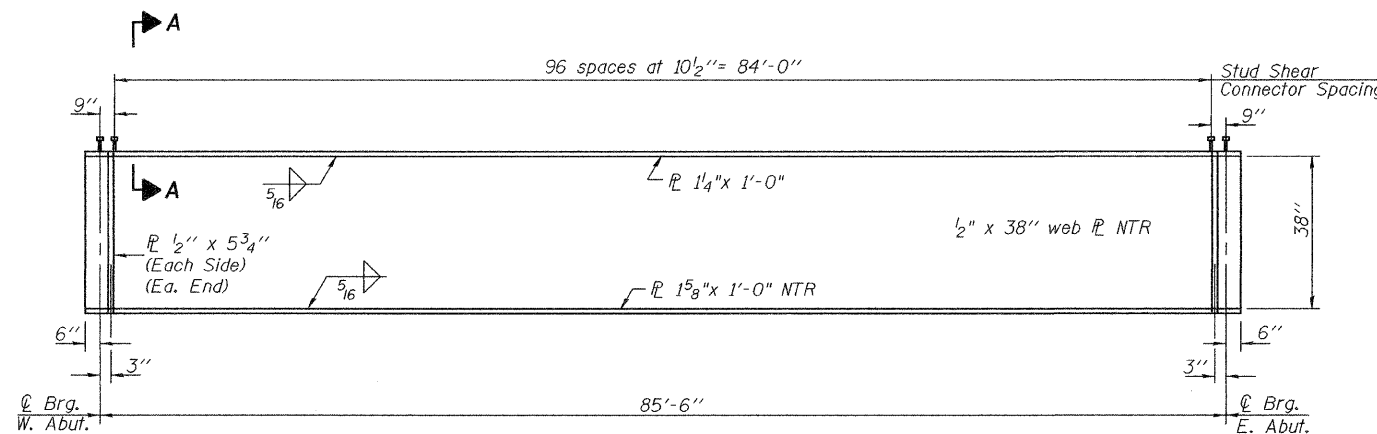


DIAPHRAGM D
(22 required)

* Alternate channel C15x50 is permitted to facilitate material acquisition. Calculated weight of structural steel is based on the lighter section.
** 3/4" φ HS bolts, 1 5/16" φ holes

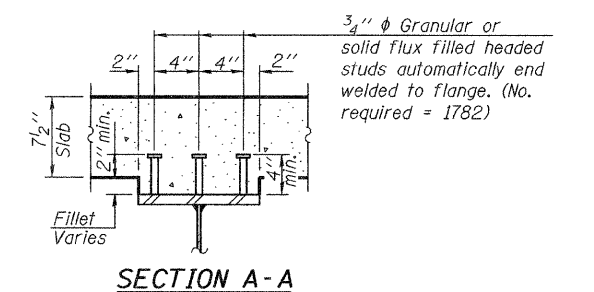


TYPICAL END OF
GIRDER ELEVATION



GIRDER ELEVATION

All plates of the girder, including bearing stiffeners, shall be AASHTO M 270 Grade 50.



SECTION A-A

STRUCTURAL STEEL DETAILS
F.A.P. ROUTE 42 - SECTION 139BR
BOND COUNTY
STATION 2049+33.51
STRUCTURE NO. 003-0061

| | |
|----------|-----------------------|
| DESIGNED | Phillip R. Litchfield |
| CHECKED | Nick R. Barnett |
| DRAWN | R. Sommer |
| CHECKED | P.R.L./N.R.B. |

| | | |
|----------|----------------------|------------------|
| EXAMINED | Thomas J. Domagalaki | November 7, 2008 |
| PASSED | Ralph E. Anderson | |