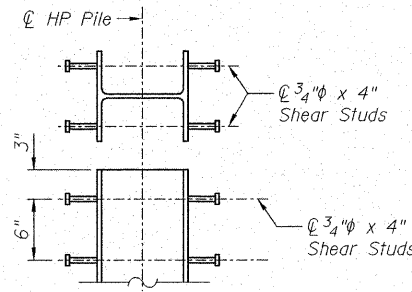
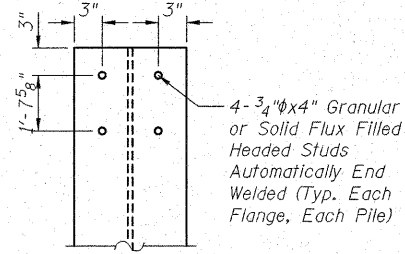


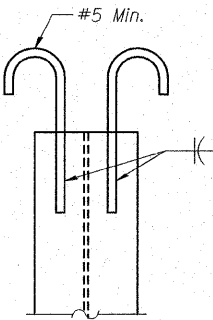
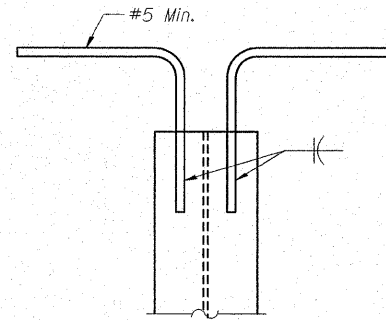
STATE OF ILLINOIS  
DEPARTMENT OF TRANSPORTATION



OPTION A



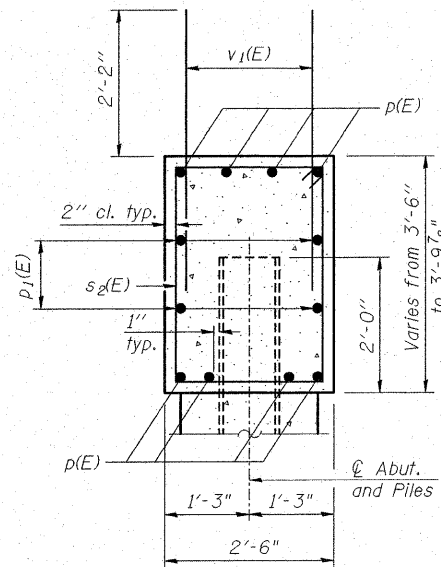
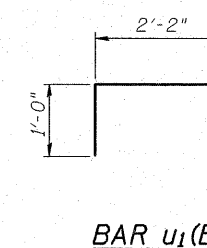
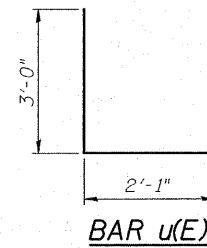
OPTION B



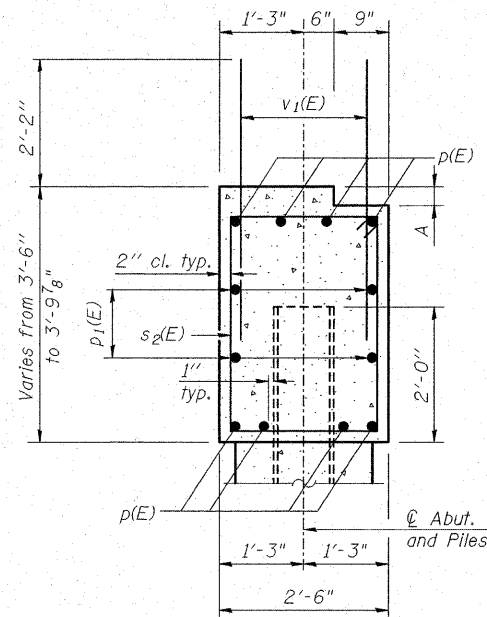
OPTION C

HP PILE ANCHORAGE

Cost of furnishing and installing HP Pile Anchorage for Option A, B or C is included in the cost unit price for Furnishing Steel Piles HP 12x53.



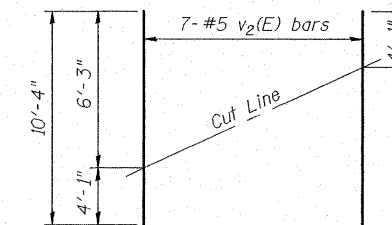
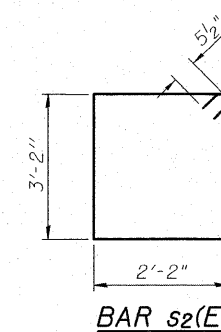
SECTION A-A  
At Beam Seat 1, 2, 6, 7



SECTION B-B  
At Beam Seat 3, 4, 5

DIMENSION "A"

Beam	1	2	3	4	5	6	7
"A"	-	-	1/4"	1 3/8"	1/4"	-	-



FIELD CUTTING DIAGRAM

Order v2(E) full length. Cut as shown and use remainder of bars in opposite face.

EAST ABUTMENT  
BILL OF MATERIAL

Bar	No.	Size	Length	Shape
h(E)	28	#6	12'-6"	—
p(E)	16	#7	23'-2"	—
p1(E)	8	#6	22'-9"	—
p2(E)	3	#5	5'-10"	—
s2(E)	40	#5	11'-7"	□
u(E)	8	#6	8'-1"	—
u1(E)	6	#5	4'-2"	—
v1(E)	86	#5	4'-4"	—
v2(E)	14	#5	10'-4"	—
v3(E)	12	#5	6'-5"	—
Structure Excavation		Cu. Yd.	105	
Concrete Structures		Cu. Yd.	19.0	
Reinforcement Bars, Epoxy Coated		Pound	2800	
Furnishing Steel Piles HP12x53		Foot	438	
Driving Piles		Foot	438	
Test Piles HP12x53		Each	1	
Concrete Encasement		Cu. Yd.	2.5	

For HP Pile details see sheet 23 of 28.

Space reinforcement in cap to miss anchor bolts.

EAST ABUTMENT DETAILS  
ILLINOIS ROUTE 4/15 OVER  
KASKASKIA OVERFLOW  
F.A.P. ROUTE 817 SEC 421B-1  
ST. CLAIR COUNTY  
STATION 149+50.00  
STRUCTURE NO. 082-0275

DESIGNED	DB
CHECKED	RS
DRAWN	ER
CHECKED	WWH



**Juneau Associates, Inc. P.C.**  
CONSULTING ENGINEERS AND LAND SURVEYORS  
2100 State Street  
Granite City, Illinois 62040  
Phone: (618) 877-1400  
Fax: (618) 452-9541  
Registered Professional Service Corporation License No. 184-003869  
100 North Research Drive  
Edwardsville, Illinois 62025  
Phone: (618) 659-0900/(618) 459-0800  
Fax: (618) 659-0841

SHEET NO. 18  28 SHEETS	F.A.P. RTE. 817	SECTION 421B-1	COUNTY ST. CLAIR	TOTAL SHEETS 56	SHEET NO. 37
	STRUCTURE NO. 082-0275		CONTRACT NO. 76885		
FED. ROAD DIST. NO.		ILLINOIS FED. AID PROJECT			