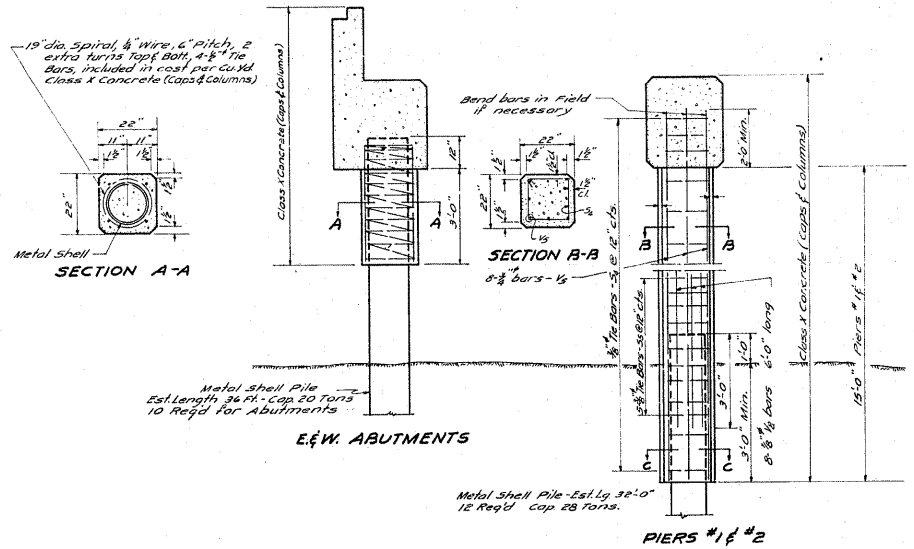
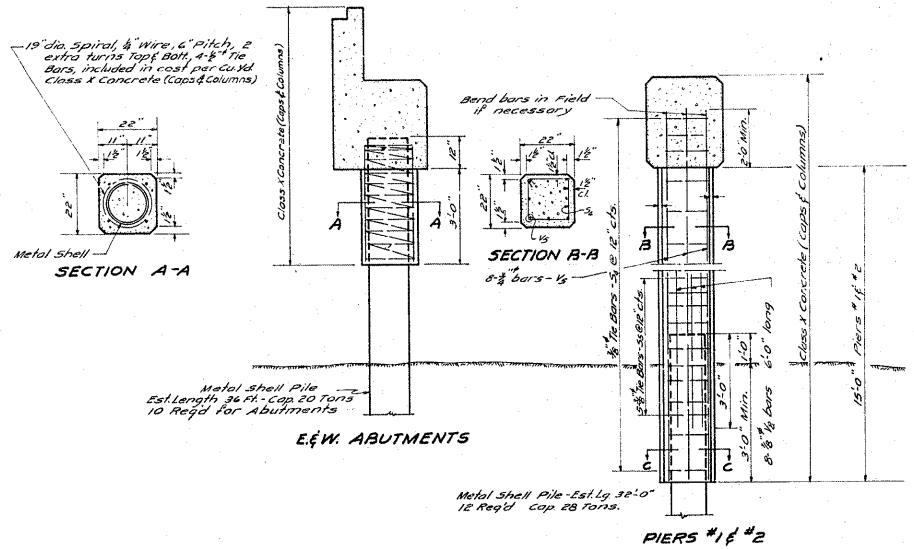
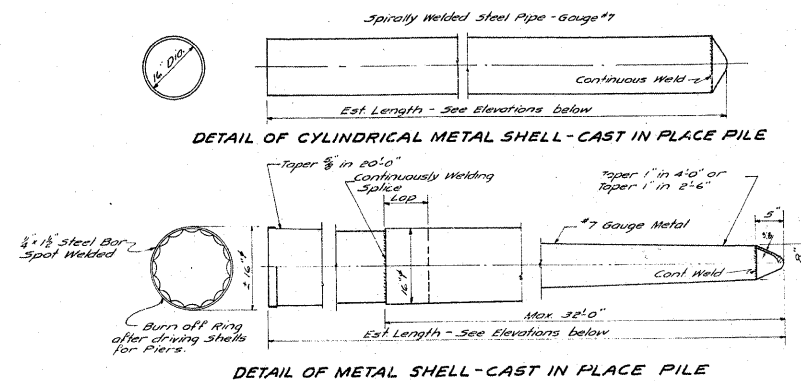


STATE OF ILLINOIS  
DEPARTMENT OF PUBLIC WORKS & BUILDINGS  
DIVISION OF HIGHWAYS

ROAD DIST. NO.	SECTION	COUNTY	SHEET NO.	SHEET NO.
150	421B	St. Clair	41	35
SHEETS				



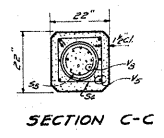
BILL OF MATERIAL FOR E&W ABUTS AND PIERS #1 & #2 - ALTERNATE "B"

ITEM	QUANTITY	UNIT
Class I Concrete (Caps of Columns) Cu Yds.	683	
Reinforcement Bars (Caps of Columns) Cu Yds.	780	
Furnishing Metal Pile Shells Lin. Ft.	744	
Metal Shell Test Pile	One	
Driving & Filling Shells (36'0\"/>		

ADDITIONAL BARS FOR ALTERNATE "B" ONLY

BAR NO.	SIZE	LENGTH
15	3/8"	17'0"
16	3/8"	2'0"
21	3/8"	7'3"
22	3/8"	4'3"

NOTE  
Caps for Abutments and Piers are the same as shown for Alternative "A".  
For Details and Bill of Reinforcement Bars See Sheet "A"



ALTERNATE "B"  
SUBSTRUCTURE  
OVERFLOW CHANNEL OF KASKASKIA RIVER  
S.B.I. RT. 150 (F.A. RT. 68) SEC. 421-B  
ST. CLAIR COUNTY  
STA. 149+50

COMPUTED	Edward J. Dalbin	EXAMINED	3-15-1974
CHECKED	R. Smith	PASSED	[Signature]
DRAWN	E. D. Alvisson	APPROVED	[Signature]
CHECKED	R. L. S.		
ASSEMBLED			
CHECKED			

FOR INFORMATION ONLY