

Notes:
 Pour steps monolithically with cap.
 If a portion of the pier wall or concrete encasement is under water, reinforcement may be placed underwater into forms. Concrete shall be tremied according to Article 503.08 of the Standard Specifications to an elevation of 1'-0" above the water line at the time of construction.

STATE OF ILLINOIS
 DEPARTMENT OF TRANSPORTATION

MIN. BAR LAP

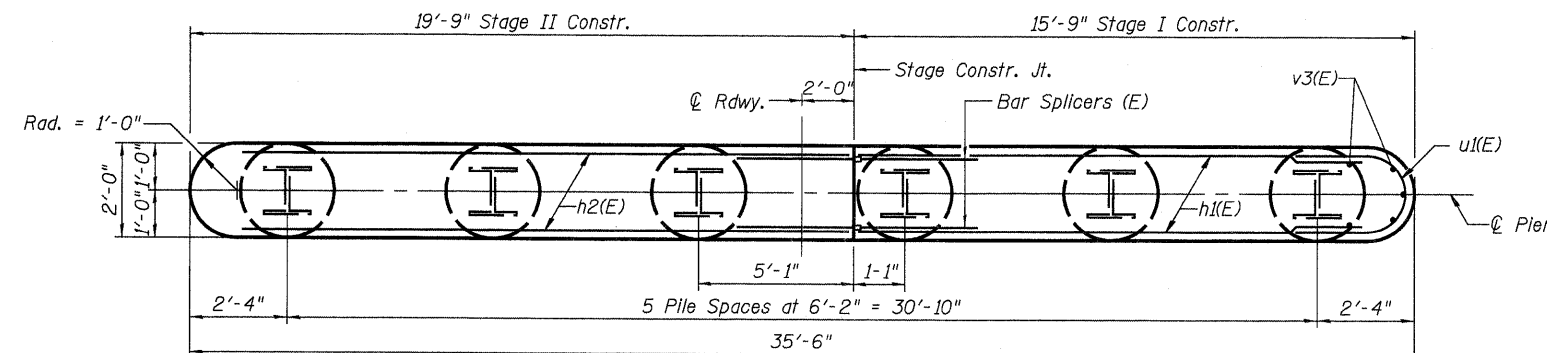
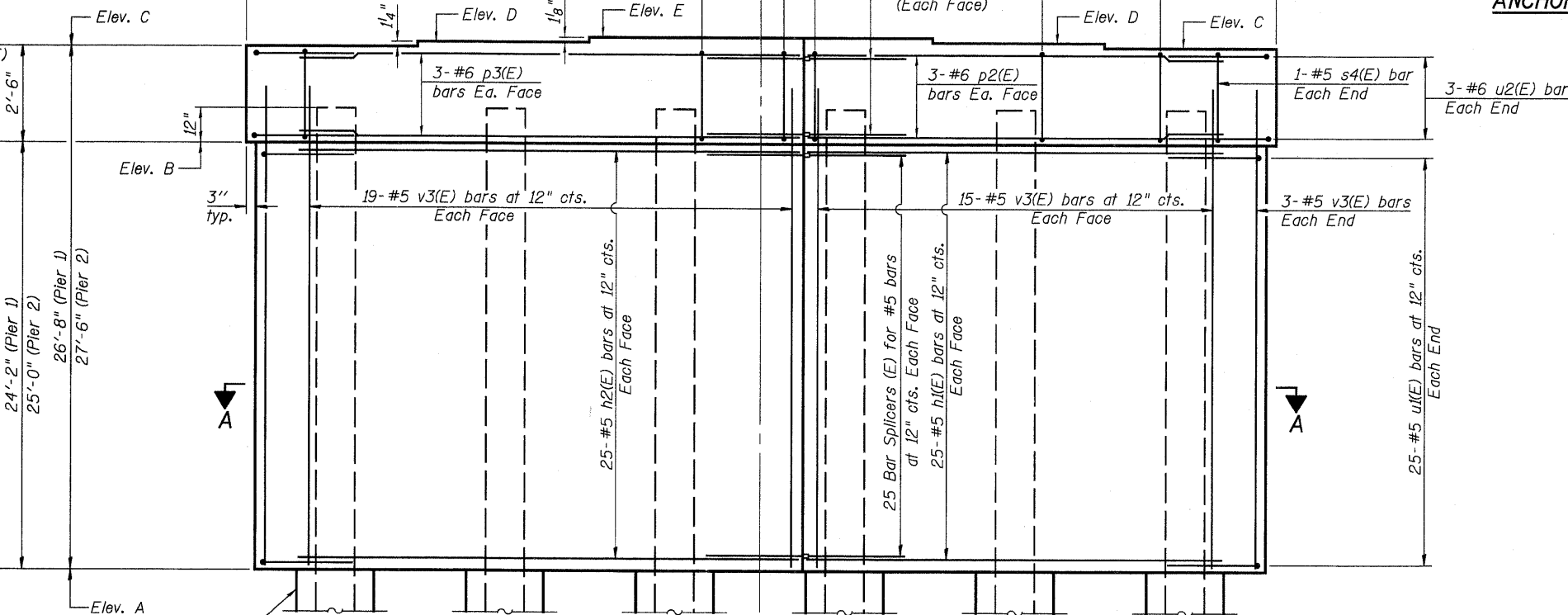
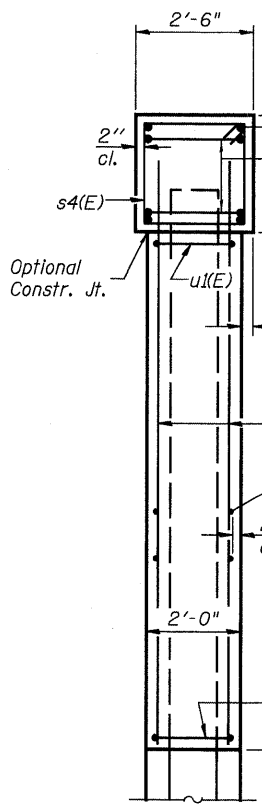
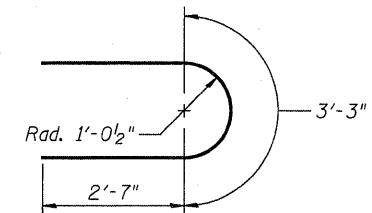
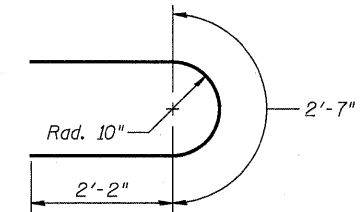
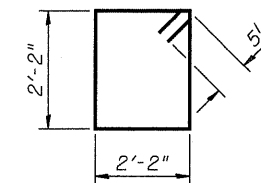
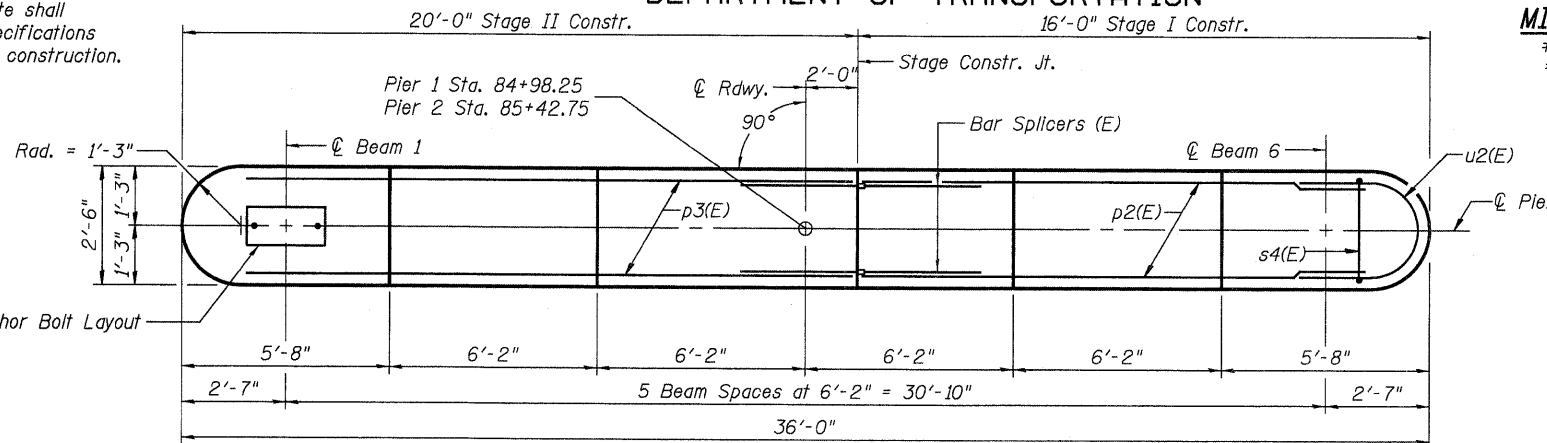
#5 Bar = 2'-2"
 #6 bar = 2'-7"

PILE DATA

Type: Steel-HP 12x63 with Pile Shoes
 Nominal Required Bearing: 470 kips
 Factored Resistance Available: 235 kips
 Est. Length: 105' (each Pier)
 No. Production Piles: 5 (each Pier)
 No. Test Piles: 1 (each Pier)

TABLE OF ELEVATIONS

Location	A	B	C	D	E
Pier 1	480.40	504.57	507.07	507.18	507.27
Pier 2	480.42	505.42	507.92	508.03	508.12



BILL OF MATERIAL

Bar	No.	Size	Length	Shape
h1(E)	50	#5	14'-7"	—
h2(E)	50	#5	18'-7"	—
p2(E)	6	#6	14'-7"	—
p3(E)	6	#6	18'-7"	—
s4(E)	32	#5	9'-7"	□
u1(E)	50	#5	6'-11"	U
u2(E)	6	#6	8'-5"	U
v3(E)	68	#5	26'-0"	—

		Pier 1	Pier 2
Concrete Structures	Cu. Yd.	71.3	73.5
Reinforcement Bars, Epoxy Coated	Pound	4630	4630
Furnishing Steel Piles HP12x63	Foot	525	525
Driving Piles	Foot	525	525
Test Pile Steel HP12x63	Each	1	1
Pile Shoes	Each	6	6
Concrete Encasement	Cu. Yd.	2.1	2.1

Reinforcement Bar list is for one Pier only.
 For details of Bar Splicers, see sheet 16 of 19.
 For details of piles and Concrete Encasement, see sheet 15 of 19.

PIERS 1 AND 2
 ILLINOIS 267 OVER
 TAYLOR CREEK
 STRUCTURE NO. 031-0043

SHEET 14 OF 19	F.A.P. RTE.	SECTION	COUNTY	TOTAL SHEETS	SHEET NO.
	10	410BR-1	GREENE	37	26
STA. 85+20.50		CONTRACT NO. 76B58			
FED. ROAD DIST. NO.		ILLINOIS FED. AID PROJECT			

JD Johnson, Depp & Quisenberry
 CONSULTING ENGINEERS
 Springfield, Illinois

DESIGNED: JDQ DRAWN: PTR
 CHECKED: DCD CHECKED: DCD

FILE: J:\JDO\10653 IL-DBVW#8 IL 267 Taylor Creek-FINAL.V-Taylor-Creek\Mapier.scd
 USER: DCD
 DATE: 10/07/2008 15:06:25