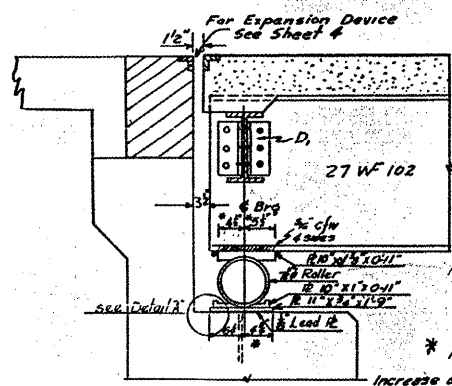
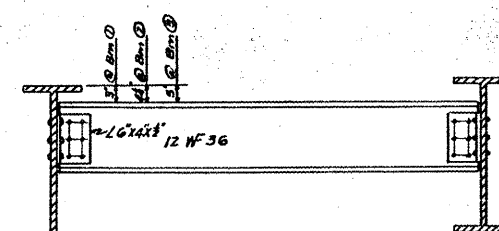
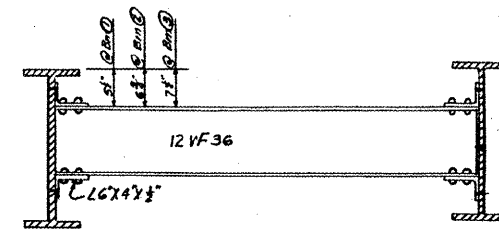
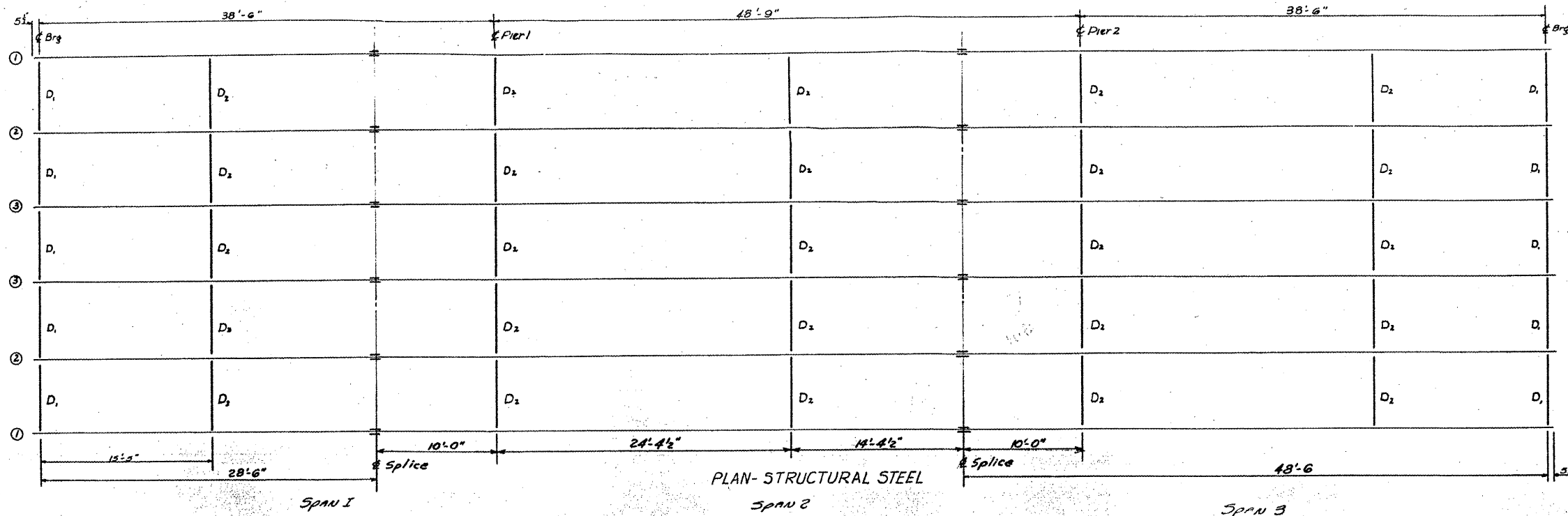
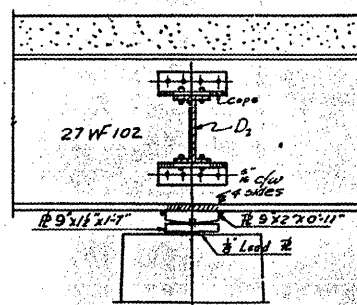
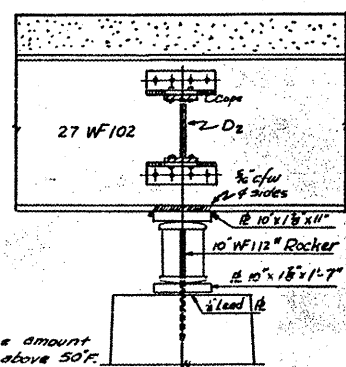


STATE OF ILLINOIS
DEPARTMENT OF PUBLIC WORKS & BUILDINGS
DIVISION OF HIGHWAYS

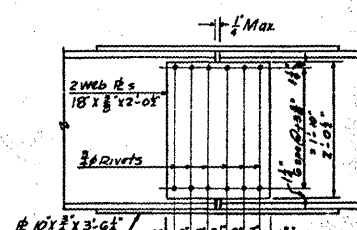
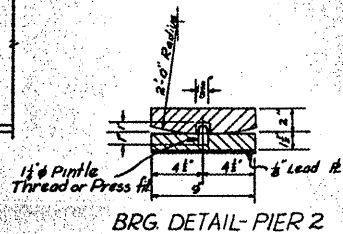
VARIOUS ROUTES
D9 BRIDGE PAINTING FY 09-1
VARIOUS COUNTIES
CONTRACT 78093
FOR INFORMATION ONLY
SHEET 9 OF 31



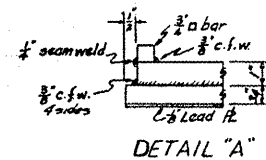
* NOTE TO ERECTOR
Increase each dimension by same amount if Abut has moved or if temp. is above 50°F.
Decrease each by same amt if temp. is below 50°F.



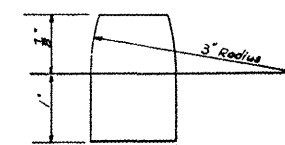
ELEVATION-PIER 2



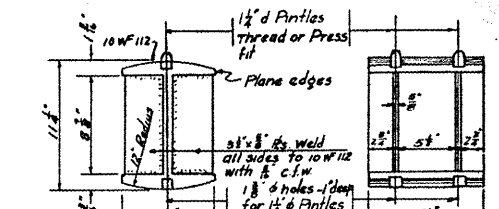
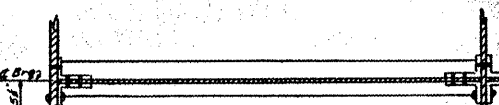
BEAM SPLICE DETAIL



DETAIL "A"



PINTLE DETAIL



ROCKER DETAILS

STRUCTURAL STEEL

BRIDGE NO. 1

F.A.R.T.E.35 SEC 11-B-1
HARDIN COUNTY
STA. 85+51.37

DESIGNED	R. Anderson	EXAMINED	Nov 24 1152 W.E. Hanson
CHECKED	Jesse J. Manning	PASSED	E.H. [Signature]
DRAWN	Ras.	APPROVED	F.N. Baker
CHECKED	Jesse J. Manning		

1 1/2" Pindle weld to roller with 3/8" c.f.w. or roller may be turned from solid.

ROLLER DETAILS