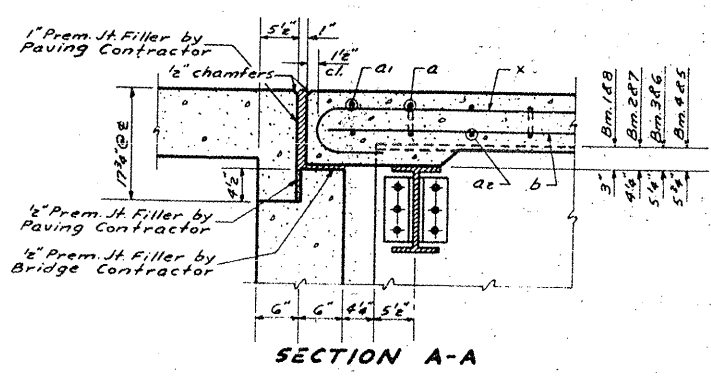
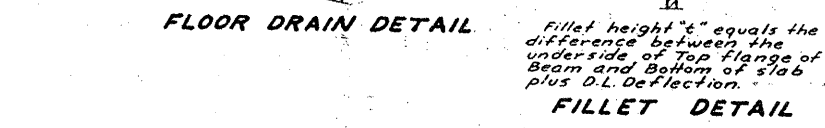
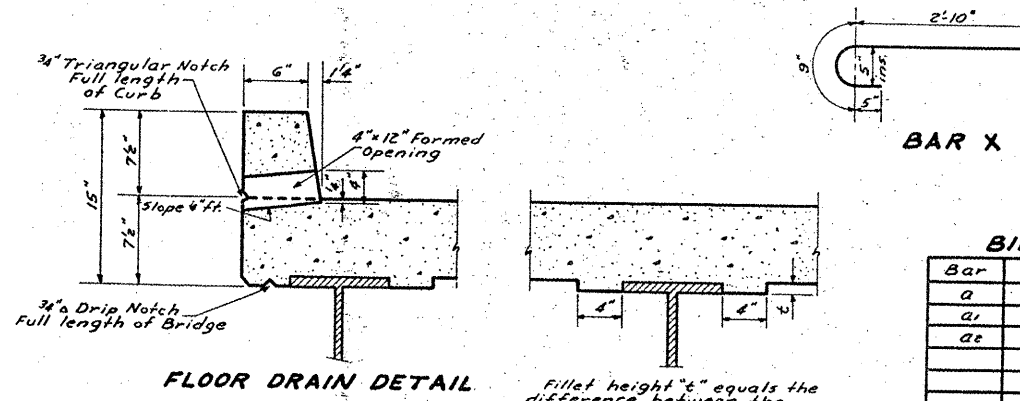
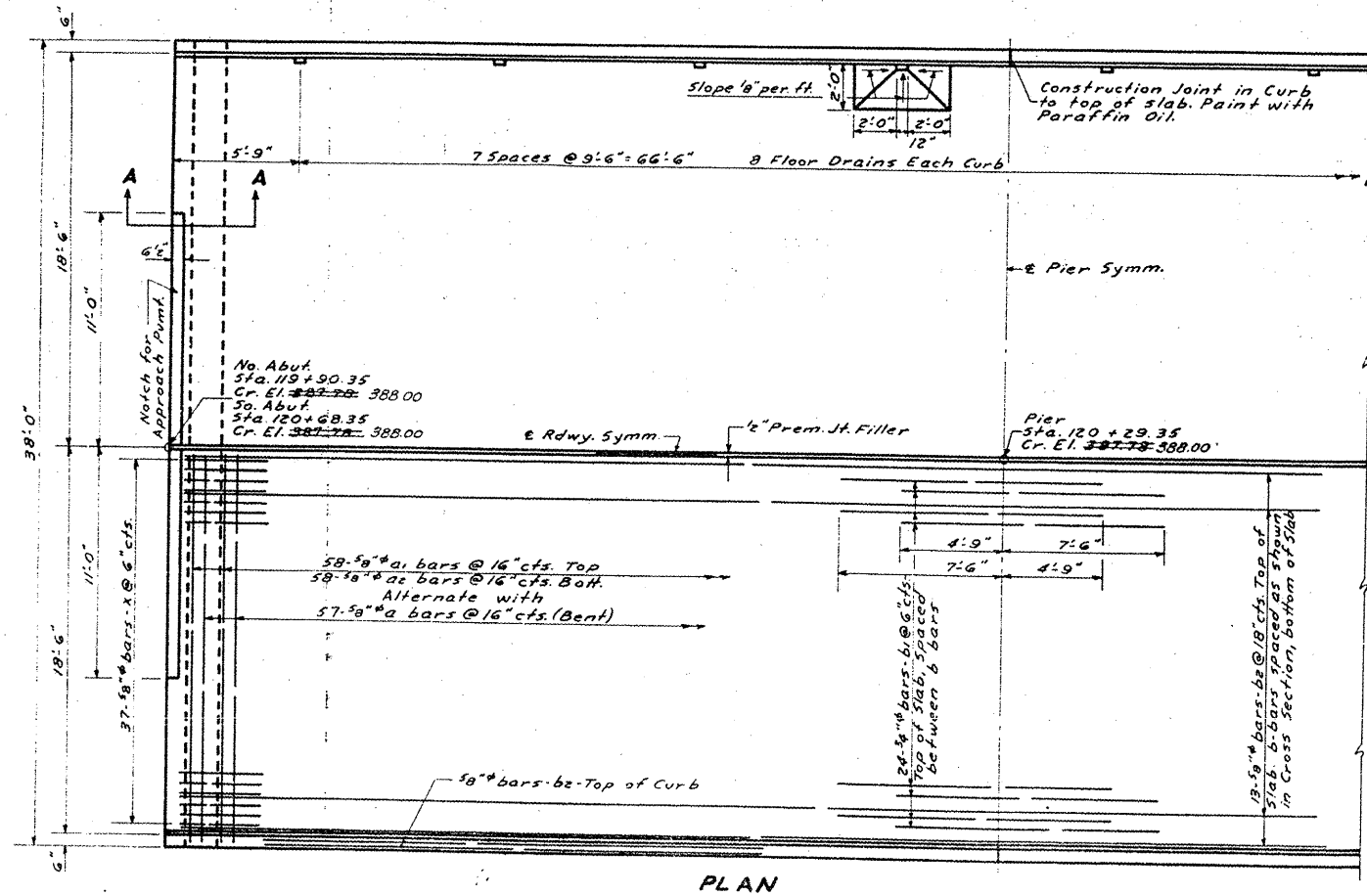
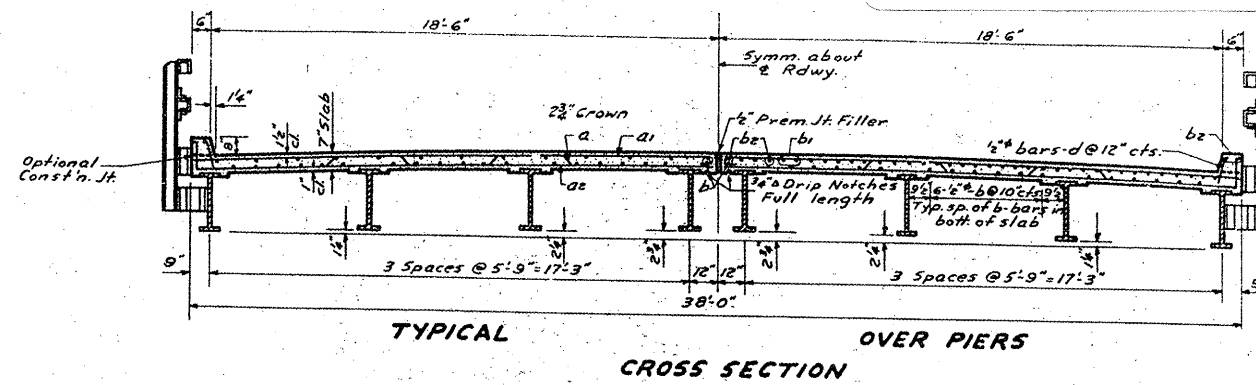
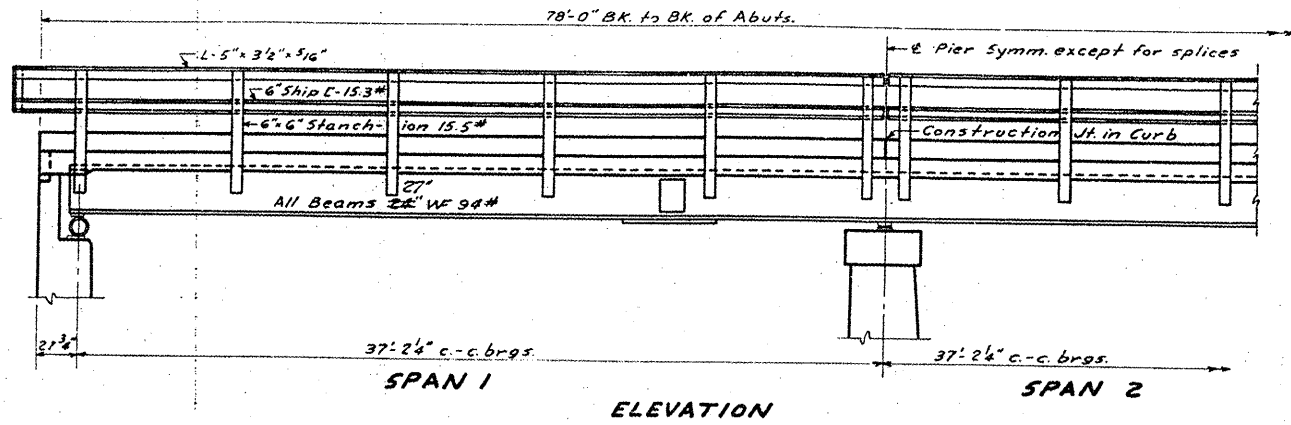


STATE OF ILLINOIS
DEPARTMENT OF PUBLIC WORKS & BUILDINGS
DIVISION OF HIGHWAYS

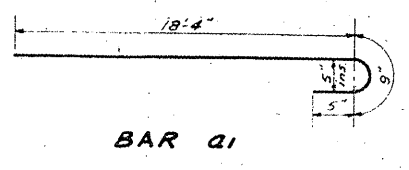
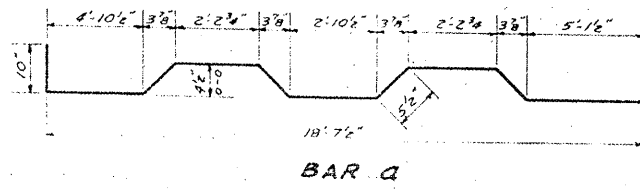
VARIOUS ROUTES
D9 BRIDGE PAINTING FY 09-1
VARIOUS COUNTIES
CONTRACT 78093
FOR INFORMATION ONLY
SHEET 22 OF 31



BILL OF MATERIAL

Bar	No.	Size	Length	Shape
a	114	5/8"	20'-0"	
a1	116	3/8"	19'-6"	
a2	116	5/8"	18'-9"	
b	152	1/2"	20'-0"	
b1	48	3/4"	12'-3"	
b2	120	3/8"	20'-0"	
d	156	1/2"	1'-0"	
x	148	3/8"	4'-0"	
Class X Concrete			cu. yds.	70.5
Reinforcement Bars			lbs.	13,150
* Structural Steel			lbs.	81,990
Name Plate			ea.	1

* Weight of Rollers, Bearing Rs, Lead Rs, and Anchor Bolts included as Structural Steel. Est. Weight 6190.



Rev. 11-16-10 - Original Const. Jt. in Slab
Rev. 11-16-10 - Original Const. Jt. removed from Slab
Rev. 11-16-10 - Original Const. Jt. removed from Slab

BRIDGE NO. 3
SUPERSTRUCTURE
PROJ. F-52 (7)
BRIDGE OVER FRENCH CREEK
FA-RT-1 (S.B. I. RT. 1) SEC. 5-B-Y
WHITE COUNTY
STA. 120 + 29.35