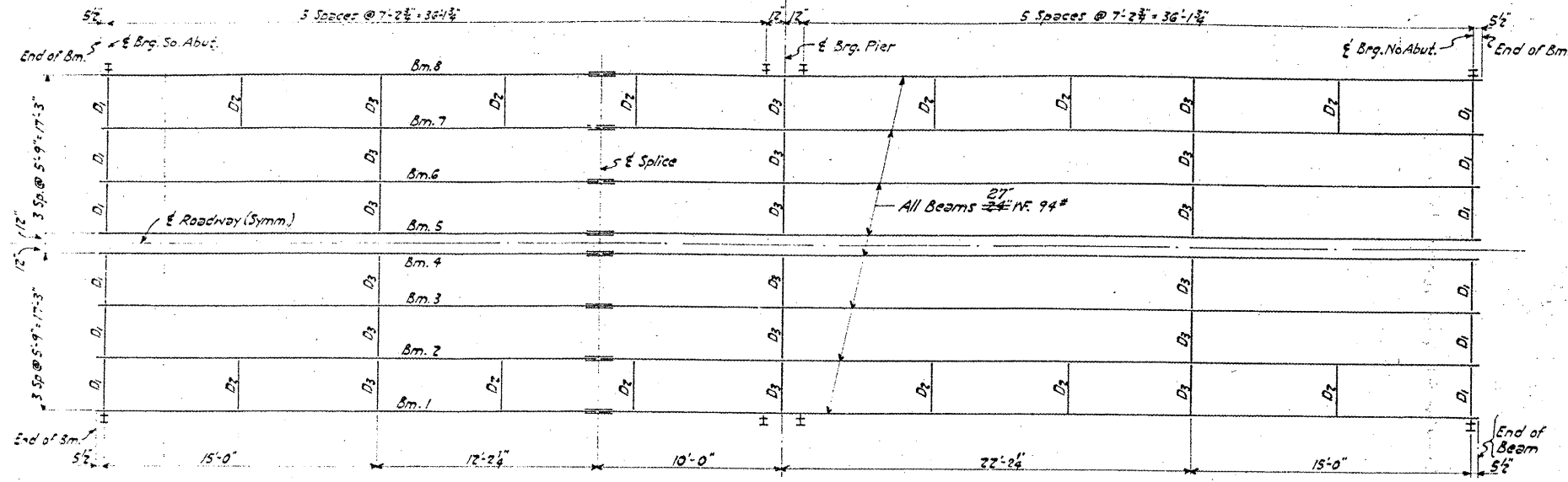


STATE OF ILLINOIS
DEPARTMENT OF PUBLIC WORKS & BUILDINGS
DIVISION OF HIGHWAYS

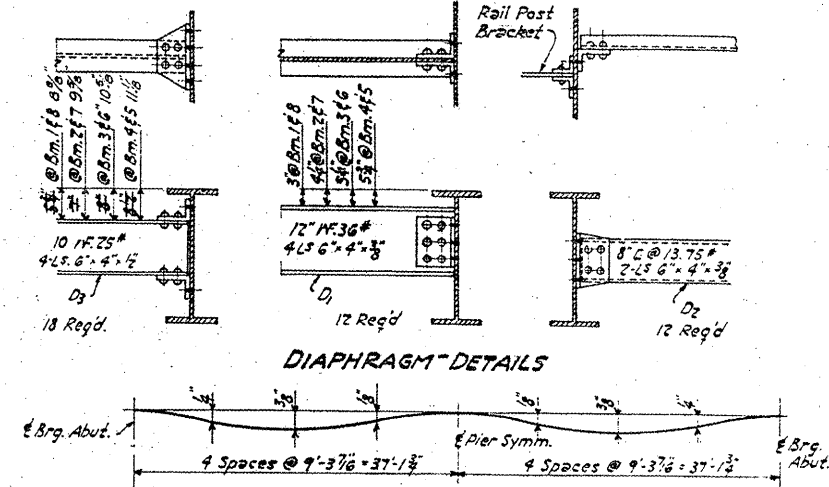
VARIOUS ROUTES
D9 BRIDGE PAINTING FY 09-1
VARIOUS COUNTIES
CONTRACT 78093
FOR INFORMATION ONLY
SHEET 23 OF 31



SPAN-1

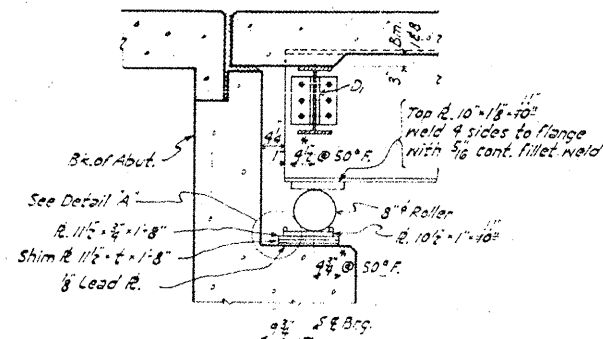
SPAN 2

PLAN OF STRUCTURAL STEEL

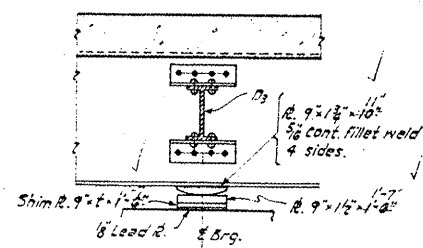


DIAPHRAGM DETAILS

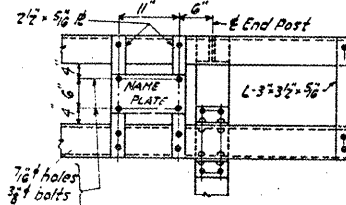
DL DEFLECTION DIAGRAM



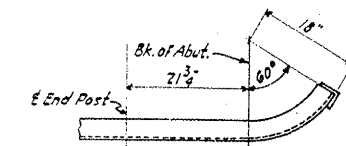
SECTION AT ABUTMENT



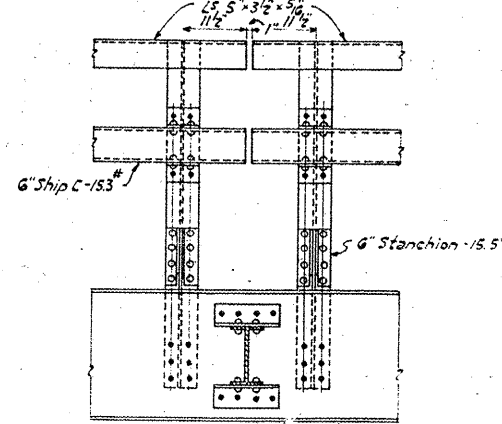
PIER



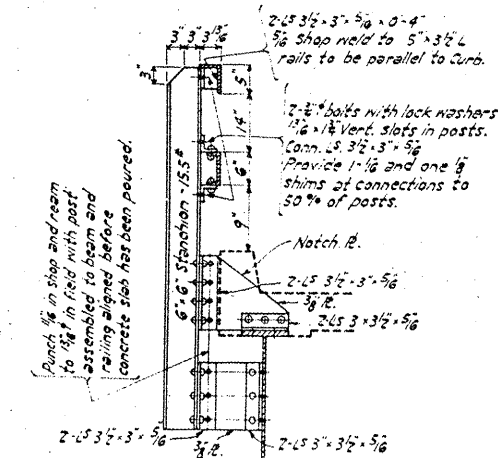
END OF RAIL
Provide connection for Name Plate at N.W. Corner only.



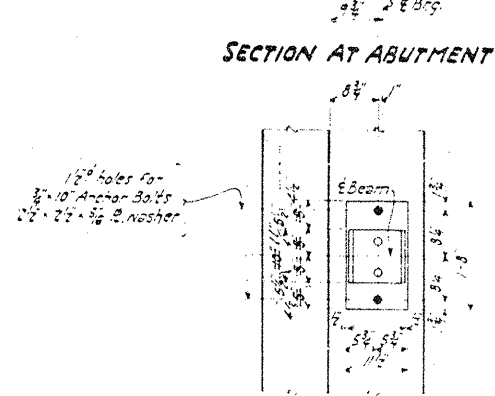
RAIL BEND



DETAIL OF RAIL AT PIER

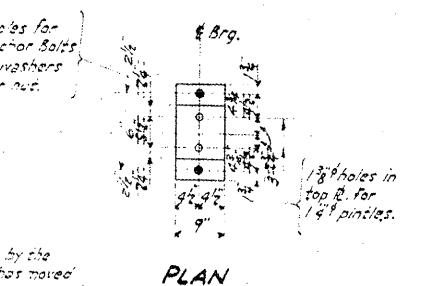


RAIL POST DETAILS

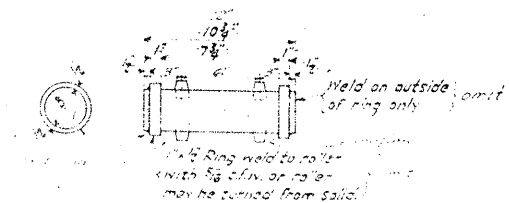


PLAN

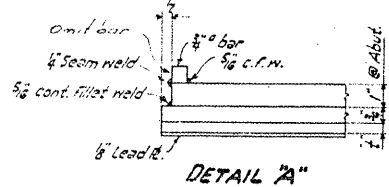
Note to Erector:
Increase each dimension by the same amount if abutment has moved or if temp. is over 50°F. Decrease each by the same amount if temp. is below 50°F.



PLAN



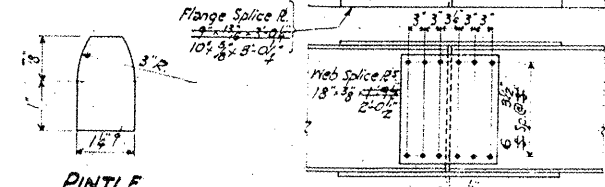
ROLLER DETAILS



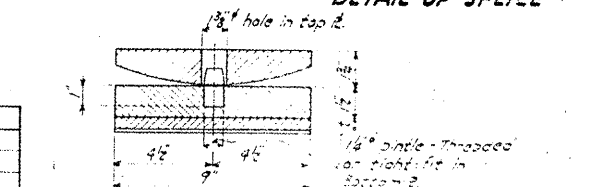
DETAIL 'A'

TABLE OF 1/2" DIMENSIONS

BEAM NO.	1	2	3	4	5	6	7	8
ASSETS	0	0	0	2	2	0	0	0
Pie.	0	0	0	12	12	0	0	0



DETAIL OF SPLICE



DETAIL OF BEARING AT PIER

BRIDGE NO. 3

STRUCTURAL STEEL
PROJ. F-52(7)
BRIDGE OVER FRENCH CREEK
R.A.M. 1 (S.B. 1 R. 1) SEC. 5 B.Y
WHITE COUNTY
STA. 120 + 29.35