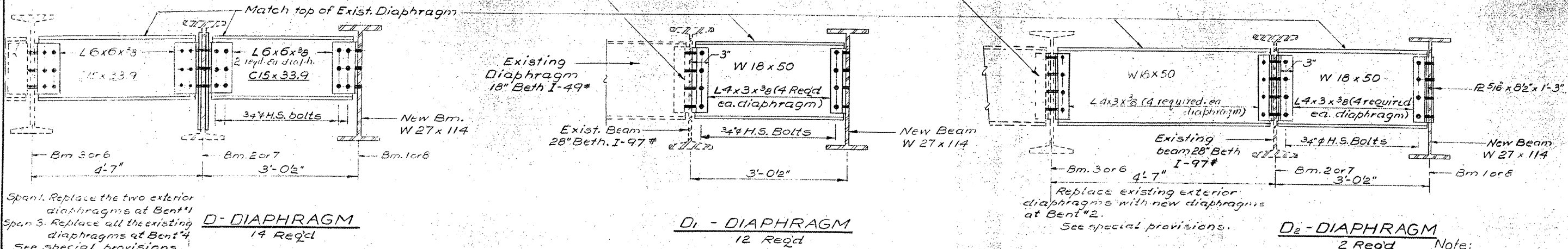


STATE OF ILLINOIS
DEPARTMENT OF TRANSPORTATION

VARIOUS ROUTES
D9 BRIDGE PAINTING FY 09-1
VARIOUS COUNTIES
CONTRACT 78093
FOR INFORMATION ONLY
SHEET 29 OF 31

Existing rivets connecting Ls to beam web shall be removed and replaced with 3/4" H.S. Bolts



Span 1. Replace the two exterior diaphragms at Bent #1
Span 3. Replace all the existing diaphragms at Bent #4
See special provisions

D - DIAPHRAGM
14 Req'd

D1 - DIAPHRAGM
12 Req'd

D2 - DIAPHRAGM
2 Req'd

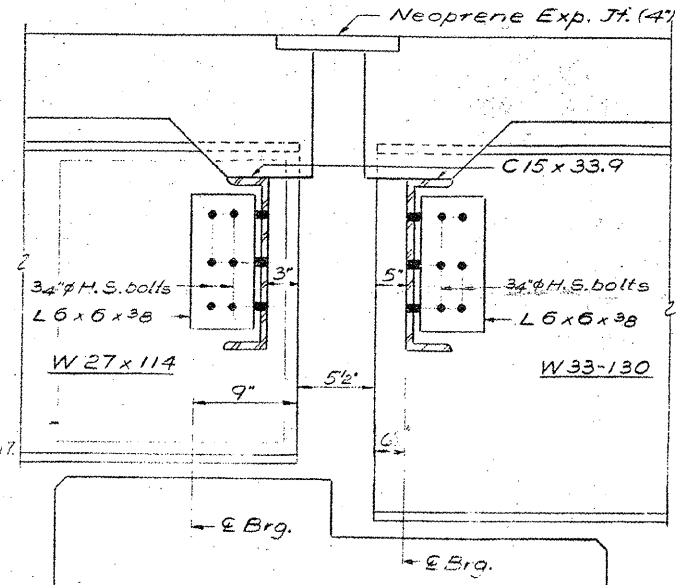
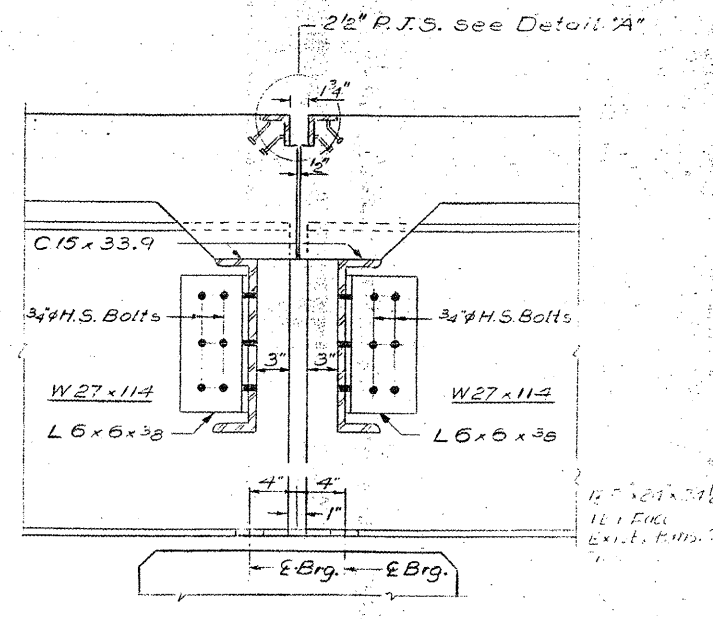
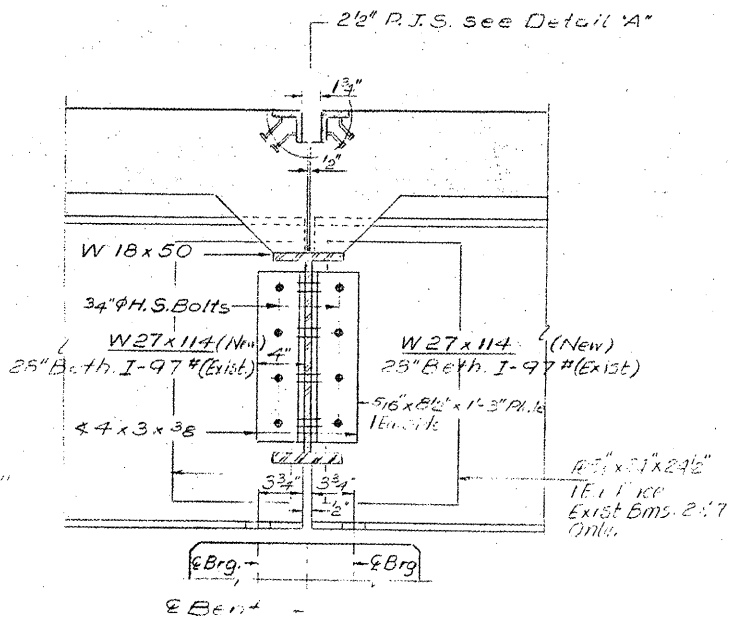
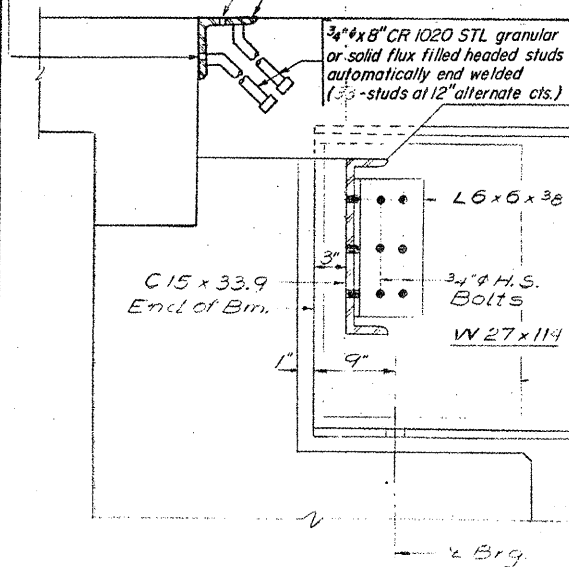
Note:
Two Hardened washers shall be required over 1 5/16" holes in angles.

7/16" holes at 12" cts. for 3/8" bolts set on 2 1/2" gage line. All bolts shall be burned, sawed or clipped off flush with back of angles after forms are removed.

7/16" Vent holes at 12" cts. set on 1 5/8" gage line

L-4x5x1/2"x 11" long Fabricate to crown

3/4"x 8" CR 1020 STL granular or solid flux filled headed studs automatically end welded (33 studs at 12" alternate cts.)



SECTION AT BENT 1
(Diaphragm D1)

SECTION AT BENT 2
(Diaphragm D2)

SECTION AT BENT 3
(Diaphragm D)

SECTION AT BENT 4
(Diaphragm D)

DIAPHRAGM DETAILS

F.A.RTE. 857-SECTION 101 BR-2

WHITE COUNTY

BRIDGE NO. 4

STA. 268 +25.75

DESIGNED	Stone & Wang	EXAMINED	Jan 13 1981
CHECKED		PASSED	
DRAWN	V.H.	APPROVED	
CHECKED			

