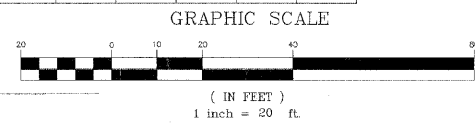


STORM SEWER STRUCTURES & PIPES

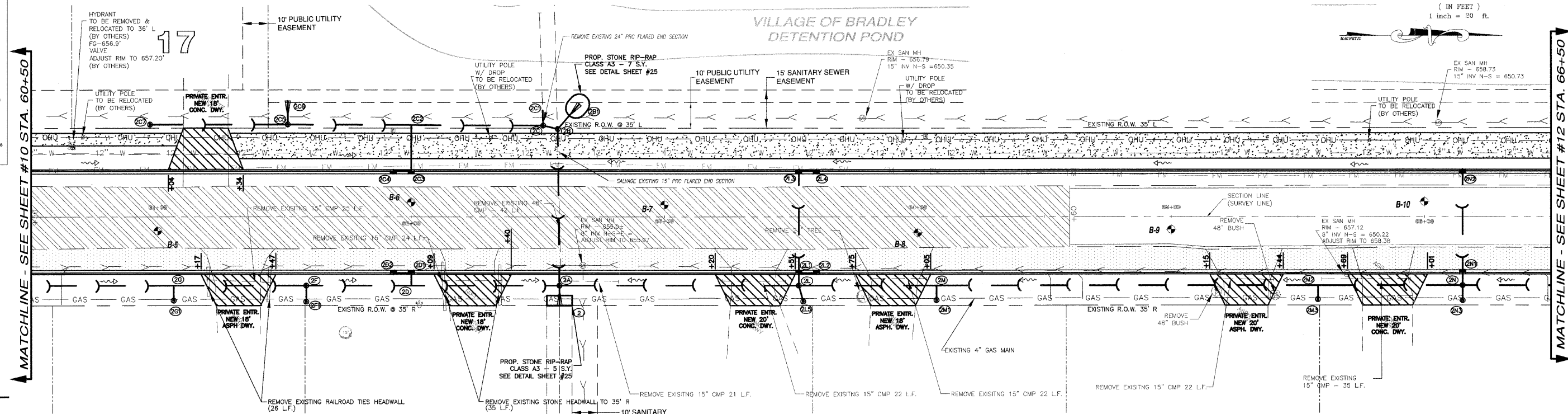
Structure Information												Out Pipe					In Pipe					In Pipe				
Structure ID	Location	Structure Type/Ø	Rim Elev	IDOT Type Fr	Lid	Pipe Segment	Direction	Invert	Pipe Size (in)	Added Spec	Pipe Type	Length (ft)	Slope	Direction	Invert	Pipe Size (in)	Direction	Invert	Pipe Size (in)	Direction	Invert	Pipe Size (in)				
2	STA: 62+59 - 35 R	FES								EDE				W	651.47	42										
2A	STA: 62+59 - 27 R	MH-7	656.40	1	OL	2A - 2	E	651.51	42	EDE	1	7	0.50%	W	651.53	42										
2B	STA: 62+58 - 35 L	MH-6	657.10	1	OL	2B - 2A	E	651.83	42	EDE	1	60	0.50%	S	652.08	24	NW	652.83	15	W	652.35	21	Ex 15			
2B1	STA: 62+66 - 44 L	FES				2B1 - 2B	SE	652.95	15		1	12	1.00%													
2C	STA: 62+52 - 36 L	MH-4	658.10	1	CL	2C - 2B	N	652.12	24		1	4	1.00%	S	652.15	15	W	654.20	24							
2C1	STA: 62+52 - 42 L	TIE				2C1 - 2C	E	654.23	24		1	6	1.00%													
2C2	STA: 62+00 - 36 L	TEE				2C2 - 2C	N	652.41	15		1	51	0.50%	E	652.54	12	S	652.41	15							
2C3	STA: 62+00 - 18 L	INL-3	655.80	11		2C3 - 2C2	W	652.71	12		1	17	1.00%	S	652.75	12										
2C4	STA: 61+93 - 18 L	INL-2	655.80	11		2C4 - 2C3	N	652.80	12		1	5	1.00%													
2C5	STA: 61+51 - 36 L	INL-3	656.10	1	CL	2C5 - 2C2	N	652.65	15		1	47	0.50%	W	653.73	12	S	652.94	12							
2C6	STA: 61+51 - 46 L	FES				2C6 - 2C5	E	653.97	12		1	8	3.00%													
2C7	STA: 60+97 - 36 L	INL-2	656.40	1	OL	2C7 - 2C5	N	653.21	12		1	53	0.50%													
2D	STA: 62+00 - 27 R	TEE				2D - 2A	N	651.65	21		1	57	0.15%	W	652.03	12	S	651.65	21							
2D1	STA: 62+00 - 22 R	INL-3	655.70	11		2D1 - 2A	E	652.06	12		1	3	1.00%	S	652.65	12										
2D2	STA: 61+93 - 22 R	INL-2	655.70	11		2D2 - 2D1	N	652.70	12		1	5	1.00%													
2F	STA: 61+59 - 27 R	MH-4	655.80	1	CL	2F - 2D	N	651.70	21		1	37	0.15%	E	651.72	12	S	651.83	18							
2F1	STA: 61+59 - 33 R	INL-2	654.20	37M		2F1 - 2F	W	651.76	12		1	7	0.50%													
2G	STA: 61+06 - 27 R	TEE				2G - 2F	N	651.94	18		1	55	0.20%	E	652.19	12	S	651.96	18							
2G1	STA: 61+06 - 33 R	INL-2	654.90	37M		2G1 - 2G	W	652.24	12		1	5	1.00%													

STORM SEWER STRUCTURES & PIPES CON'T

Structure Information												Out Pipe					In Pipe					In Pipe				
Structure ID	Location	Structure Type/Ø	Rim Elev	IDOT Type Fr	Lid	Pipe Segment	Direction	Invert	Pipe Size (in)	Added Spec	Pipe Type	Length (ft)	Slope	Direction	Invert	Pipe Size (in)	Direction	Invert	Pipe Size (in)	Direction	Invert	Pipe Size (in)				
2L	STA: 63+53 - 27 R	MH-4	655.70	1	CL	2L - 2A	S	651.70	21		1	93	0.15%	W	652.24	12	NE	651.72	12	N	651.82	18				
2L1	STA: 63+53 - 22 R	INL-3	655.70	11		2L1 - 2L	E	652.28	12		1	4	1.00%	N	652.64	12	W	652.30	12							
2L2	STA: 63+60 - 22 R	INL-2	655.70	11		2L2 - 2L1	S	652.70	12		1	6	1.00%													
2L3	STA: 63+63 - 18 L	INL-3	655.80	11		2L3 - 2L1	E	652.68	12		1	38	1.00%	N	652.70	12										
2L4	STA: 63+60 - 18 L	INL-2	655.80	11		2L4 - 2L3	S	652.75	12		1	5	1.00%													
2L5	STA: 63+55 - 33 R	INL-2	654.10	37M		2L5 - 2L	SW	651.77	12		1	5	1.00%													
2M	STA: 64+07 - 27 R	TEE				2M - 2L	S	652.19	18		1	53	0.70%	E	652.44	12	N	652.19	18							
2M1	STA: 64+07 - 33 R	INL-2	655.00	37M		2M1 - 2M	W	652.49	12		1	5	1.00%													
2M2	STA: 65+58 - 27 R	TEE				2M2 - 2M	W	653.23	18		1	149	0.70%	E	653.48	12	N	653.23	18							
2M3	STA: 65+58 - 33 R	INL-2	656.80	37M		2M3 - 2M2	W	653.53	12		1	5	1.00%													
2N	STA: 64+15 - 27 R	MH-4	658.90	1	CL	2N - 2M2	S	653.62	18		1	56	0.70%	W	655.63	12	E	654.63	12	N	654.90	12				
2N1	STA: 64+15 - 22 R	INL-3	659.10	1		2N1 - 2N	E	655.67	12		1	4	1.00%	W	655.69	12										
2N2	STA: 64+15 - 18 L	INL-2	659.10	11		2N2 - 2N1	E	656.07	12		1	38	1.00%													
2N3	STA: 64+15 - 33 R	INL-2	657.90	37M		2N3 - 2N	W	654.68	12		1	5	1.00%													

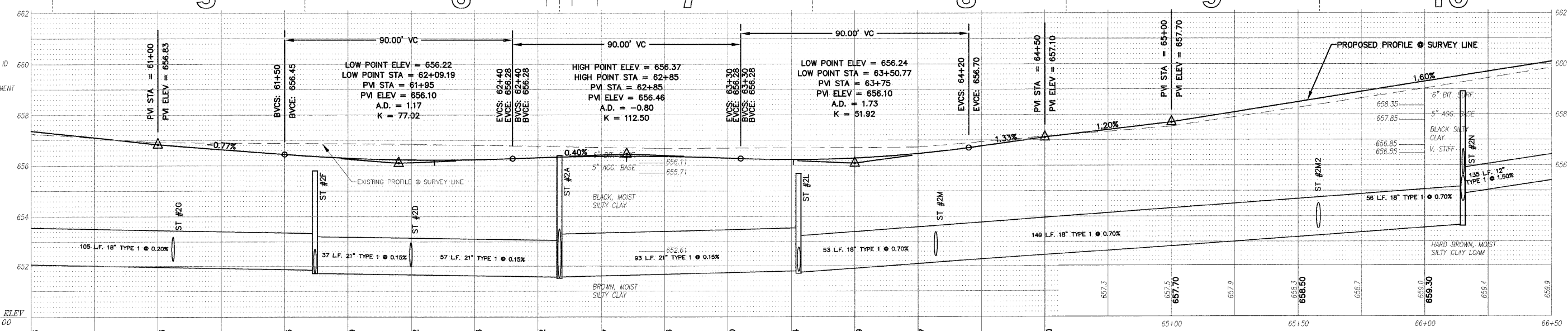


- STORM STRUCTURE LEGEND**
- EXMH = Existing manhole
 - FES = PRC Flared End Section
 - INL-2 = Inlet Ty A, 2' Dia
 - INL-SP = Inlet Ty A, 2' Dia (Special)
 - INL-3 = Inlet Ty B, 3' Dia
 - CB-4 = Catch Basin Ty A, 4' Dia
 - CB-5 = Catch Basin Ty A, 5' Dia
 - MH-4 = Manhole Ty A, 4' Dia
 - MH-5 = Manhole Ty A, 5' Dia
 - MH-6 = Manhole Ty A, 6' Dia
 - MH-7 = Manhole Ty A, 7' Dia
 - RES-6 = Resistor CBASIN, 6' Dia
 - TEE = RCP Inlet Tee
 - INL-SP = Inlet Type A (Special)
 - TIE = Connect to pipe
 - CUT = Connect to Box Culvert & cut pipe flush
 - 1 = Frame & Lids Type 1
 - 37M = Grate Type 37M
 - 11 = Frame & Grate Type 11
 - 11V = Frame & Grate Type 11V
 - OL = Cast Open Lid
 - CL = Cast Closed Lid
 - ØX60B = PRC Box Culvert 6' x 6' w/ End Sections (ASTM-C850)
 - END = Continuation By Others



LEGEND

- PAVEMENT WIDENING
- PAVEMENT REMOVAL
- BUTT JOINT
- PROPOSED STORM SEWER
- PROPOSED STORM STRUCTURE ID
- PROPOSED DRIVEWAY REPLACEMENT



M. GINGERICH, GERAUX & ASSOCIATES

240 N. Industrial Drive
Bradley, Illinois 60915
815-939-4921
FAX: 815-939-9810

REVISIONS

DATE	BY	DESCRIPTION
2/11/08	AJC/JWP	PER IDOT REVIEW
3/27/08	JWP	PER IDOT REVIEW
4/1/08	JWP	PER REVIEWS
5/7/08	JWP	ENR PDR REVISION PER COMMENT

ILLINOIS DEPARTMENT OF TRANSPORTATION
PLAN & PROFILE SHEETS
CARDINAL DRIVE

STA. 60+50 TO STA. 66+50

SCALE: VERTICAL 1" = 2'
HORIZONTAL 1" = 20'

DATE: 1/4/08 DRAWN BY: MJQ/AJC
CHECKED BY: JWP