

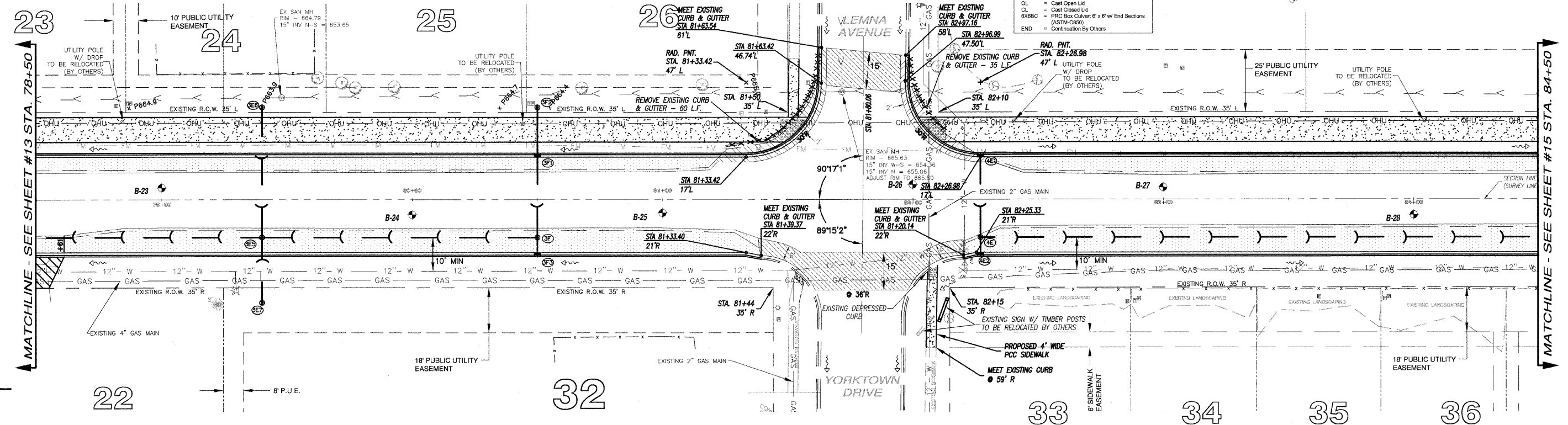
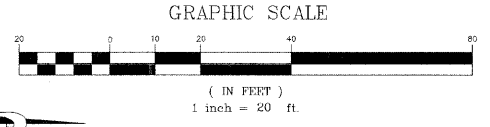
STORM SEWER STRUCTURES & PIPES

Structure Information					Out Pipe																		
Structure ID	Location	Structure Type/Ø	Rim Elev	IDOT Type Fr	Lid	Pipe Segment	Direction	Invert	Pipe Size (in)	Added Spec	Pipe Type	Length (ft)	Slope	Direction	Invert	Pipe Size (in)	Direction	Invert	Pipe Size (in)				
3E5	STA: 79+40 - 15 R	MH-4	665.05	1	CL	3E5 - 3E	S	658.58	18		2	218	0.20%	W	659.58	12	E	658.60	12	N	660.58	15	
3E6	STA: 79+40 - 37 L	INL-2	663.90	37M		3E6 - 3E5	E	660.09	12		1	51	1.00%										
3E7	STA: 79+40 - 41 R	INL-2	661.40	37M		3E7 - 3E5	W	658.85	12		1	25	1.00%										
3F	STA: 80+50 - 15 R	INL-3	664.72	1	CL	3F - 3E5	S	661.13	15		1	109	0.50%	W	661.15	12	E	661.51	12				
3F1	STA: 80+50 - 18 L	INL-3	664.75	11		3F1 - 3F	E	661.47	12		1	32	1.00%	NW	661.49	12							
3F2	STA: 80+50 - 37 L	INL-2	664.40	37M		3F2 - 3F1	SE	661.68	12		1	19	1.00%										
3F3	STA: 80+50 - 22 R	INL-2	664.65	11		3F3 - 3F	W	661.57	12		1	6	1.00%										
4E	STA: 82+27 - 15 R	INL-3	665.60	1	CL	4E - 4D	N	662.25	12		1	272	0.50%	W	662.27	12	E	662.34	12				
4E1	STA: 82+27 - 18 L	INL-2	665.45	11		4E1 - 4E	E	662.59	12		1	32	1.00%										
4E2	STA: 82+27 - 22 R	INL-2	665.40	11		4E2 - 4E	NW	662.40	12		1	6	1.00%										

STORM STRUCTURE LEGEND

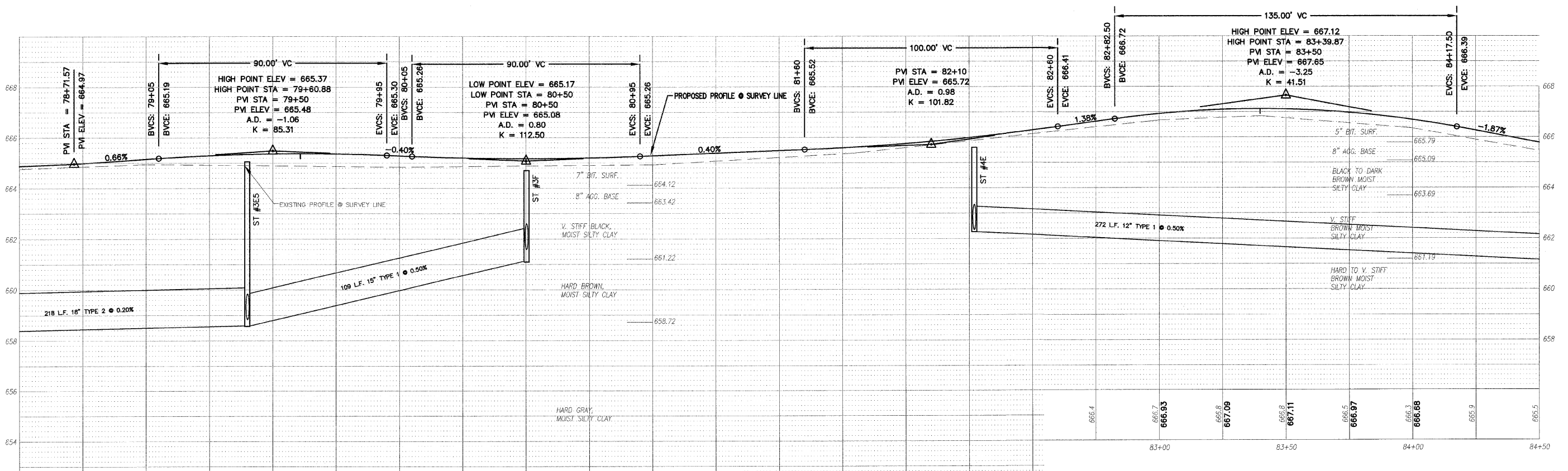
EX-MH = Existing Manhole  
 FES = PRC Flared End Section  
 INL-2 = Inlet Ty A 2 Dia  
 INL-3P = Inlet Ty A 3 Dia (Special)  
 INL-3 = Inlet Ty B 3 Dia  
 CB-4 = Catch Basin Ty A 4 Dia  
 CB-5 = Catch Basin Ty A 5 Dia  
 MH-4 = Manhole Ty A 4 Dia  
 MH-5 = Manhole Ty A 5 Dia  
 MH-6 = Manhole Ty A 6 Dia  
 MH-7 = Manhole Ty A 7 Dia  
 RES-6 = Restrictor C/BASIN, 6 Dia  
 TEE = RCP Tee  
 INL-3P = Inlet Ty A (Special)  
 TIE = Connect to pipe  
 CUT = Connect to Box Culvert & out pipe flush  
 1 = Frame & Lids Type 1  
 37M = Grate Type 37M  
 11 = Frame & Grate Type 11  
 11V = Frame & Grate Type 11V  
 OL = Cast Open Lid  
 CL = Cast Closed Lid  
 6X6RC = PRC Box Culvert 6' x 6' w/ End Sections (ASTM-C200)  
 END = Continuation By Others

F.A.U. RTE.	SECTION	COUNTY	TOTAL SHEETS	SHEET NO.
MG2A# M2-096	07-00093-00-RP KANKAKEE		43	14
CONTRACT NO.: 87342				



LEGEND

- PAVEMENT WIDENING
- PAVEMENT REMOVAL
- BUTT JOINT
- PROPOSED STORM SEWER
- PROPOSED STORM STRUCTURE ID
- PROPOSED DRIVEWAY REPLACEMENT



<p><b>M. GINGRICH, GERAUX &amp; ASSOCIATES</b></p> <p>240 N. Industrial Drive                  Bradley, Illinois 60915                  815-839-4921                  FAX: 815-839-9810</p>	<p>REVISIONS</p> <table border="1"> <tr> <th>DATE</th> <th>BY</th> <th>DESCRIPTION</th> </tr> <tr> <td>2/11/08</td> <td>AJC/JWP</td> <td>PER IDOT REVIEW</td> </tr> <tr> <td>3/27/08</td> <td>JWP</td> <td>PER IDOT REVIEW</td> </tr> </table>		DATE	BY	DESCRIPTION	2/11/08	AJC/JWP	PER IDOT REVIEW	3/27/08	JWP	PER IDOT REVIEW	<p>ILLINOIS DEPARTMENT OF TRANSPORTATION                  PLAN &amp; PROFILE SHEET                  CARDINAL DRIVE                  STA. 66+50 TO STA. 72+50</p> <p>SCALE: VERTICAL 1" = 2'                  HORIZONTAL 1" = 20'</p> <p>DATE: 1/4/08 DRAWN BY: MJO/AJC                  CHECKED BY: JWP</p>
	DATE	BY	DESCRIPTION									
2/11/08	AJC/JWP	PER IDOT REVIEW										
3/27/08	JWP	PER IDOT REVIEW										
<p>DATE: 1/4/08</p>												