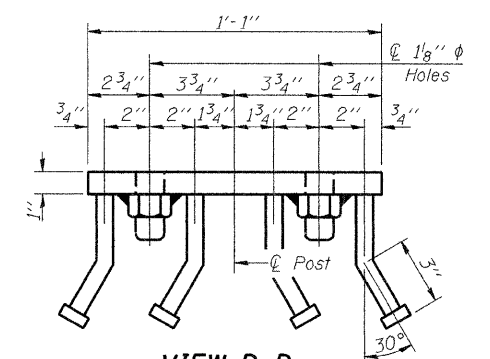
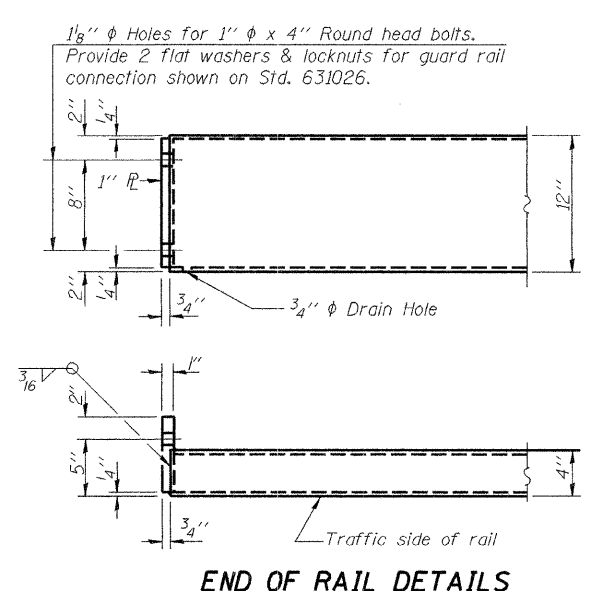
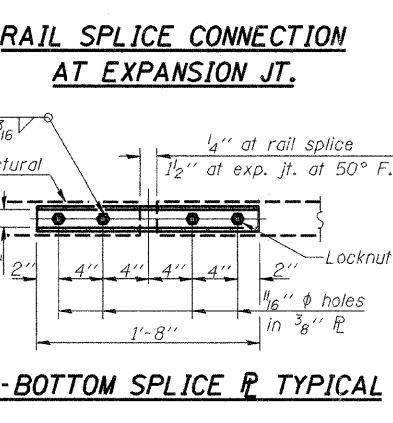
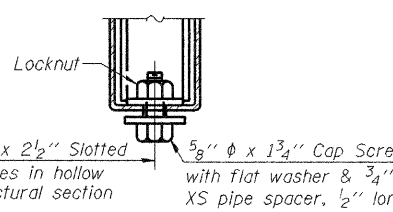


Notes:  
 All field drilled holes shall be coated with an approved zinc rich paint before erection.  
 For multi-span bridges, sufficient 1/4 inch x 6 inch x 1-2 inch galvanized steel shims shall be provided to align rail between adjacent spans. Cost included with Steel Railing, Type S-1.  
 All steel rail elements shall be galvanized according to Article 509.05 of the Standard Specifications.  
 \*\*\*The studs of the anchor devices shall be placed below the top reinforcement bars and the outermost longitudinal reinforcement bar shall be placed directly above the studs of the rail post anchor device.



**ESI** CONSULTANTS, LTD  
 753 WINDSOR ROAD  
 CHARLESTON, IL 61820  
 (317) 348-1100  
 WWW.ESICONSULTANTS.LTD.COM  
 ILLINOIS DEPARTMENT OF PROFESSIONAL REGULATION REGISTRATION #184-009885

R-23A 5-16-08 (10'-9" Maximum Post Spacing)



**BILL OF MATERIAL**

Item	Unit	Quantity
Steel Railing, Type S-1	Foot	105

**STEEL RAILING, TYPE S-1  
 TR 164 OVER SWANK CREEK**

DATE: 09-29-2008 DRAWN BY: ADG CHECKED BY: DF

SHEET NO.	F.A. RTE.	SECTION	COUNTY	TOTAL SHEETS	SHEET NO.
4		01-03131-00-BR	VERMILION	13	7
		SN 092-3494	CONTRACT NO. 91365		
		FED. ROAD DIST. NO. -	ILLINOIS FED. AID PROJECT		

PRINTED DATE: 10/6/2008  
 n:\proj\ecsl\vermilion\tr\_164 over swank creek\cadd\adm\sheets\07\_Rail.dgn  
 county of ver. 164 over swank creek\cadd\adm\sheets\07\_Rail.dgn