

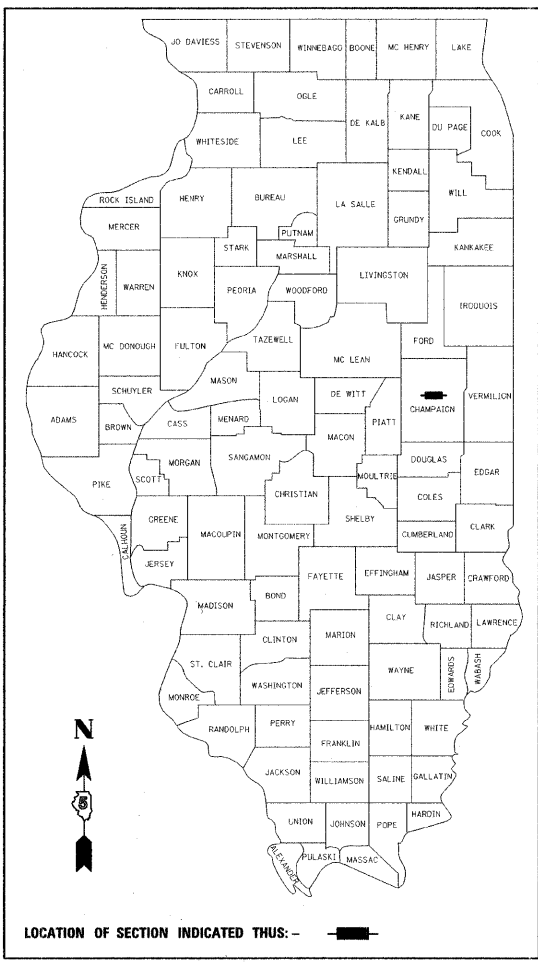
INDEX OF SHEETS

SHEET NO.	DESCRIPTION
1	TITLE SHEET
2	GENERAL NOTES
3	HIGHWAY STANDARDS AND LEGEND
4 - 13	SUMMARY OF QUANTITIES
14 - 17	SCHEDULE OF QUANTITIES
18 - 19	EXISTING TYPICAL SECTIONS
20 - 27	PROPOSED TYPICAL SECTIONS
28 - 31	HORIZONTAL ALIGNMENT LAYOUT AND CONTROL
32 - 45	REMOVAL/RELOCATION PLANS
46 - 65	PLAN AND PROFILE - CURTIS ROAD
66 - 69	PLAN AND PROFILE - MATTIS AVENUE
70 - 71	PLAN AND PROFILE - PROSPECT AVENUE
72 - 73	PLAN AND PROFILE - STORM SEWER OUTFALL
74	DETENTION BASIN/WETLAND GRADING AND DRAINAGE PLAN
75	DETENTION BASIN/WETLAND PLANTING PLAN
76	PLAN AND PROFILE - RELOCATED PRIVATE ENTRANCE
77 - 80	PLAN AND PROFILE - PHINNEY BRANCH CHANNEL
81 - 88	STAGE CONSTRUCTION AND MAINTENANCE OF TRAFFIC PLANS
89 - 93	STORM WATER POLLUTION PREVENTION PLAN
94 - 103	PAVEMENT JOINT PLANS
104 - 106	INTERSECTION DETAILS
107 - 120	PAVEMENT MARKING PLANS
121 - 122	PAVEMENT MARKING DETAILS
123 - 126	LANDSCAPING PLANS
127 - 131	TRAFFIC SIGNAL PLANS - CURTIS ROAD/MATTIS AVENUE
132 - 135	TRAFFIC SIGNAL PLANS - CURTIS ROAD/PROSPECT AVENUE
136 - 151	ROADWAY LIGHTING PLANS
152 - 157	STRUCTURAL PLANS AND DETAILS
158 - 166	MISCELLANEOUS DETAILS
167 - 204	CROSS SECTIONS - CURTIS ROAD
205 - 211	CROSS SECTIONS - MATTIS AVENUE
212 - 218	CROSS SECTIONS - PROSPECT AVENUE
219	CROSS SECTIONS - FREEDOM BOULEVARD
220 - 222	CROSS SECTIONS - DETENTION BASIN/WETLAND
223 - 224	CROSS SECTIONS - RELOCATED PRIVATE ENTRANCE
225 - 231	CROSS SECTIONS - PHINNEY BRANCH CHANNEL
232 - 242	SIGNING PLANS (FOR INFORMATION ONLY)

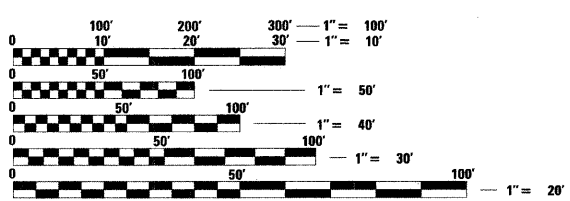
STATE OF ILLINOIS
DEPARTMENT OF TRANSPORTATION
DIVISION OF HIGHWAYS
PLANS FOR PROPOSED
FEDERAL AID HIGHWAY

PLAN 1 INCH = 20 FEET
 PROFILE HORIZ. 1 INCH = 20 FEET
 PROFILE VERT. 1 INCH = 5 FEET
 CROSS SECTIONS HORIZ. 1 INCH = 10 FEET
 CROSS SECTIONS VERT. 1 INCH = 5 FEET

CITY OF CHAMPAIGN / VILLAGE OF SAVOY
CHAMPAIGN COUNTY, ILLINOIS
SECTION NO. 00-00374-01-PV
PROJECT NO. RS-HPP-1805 (001)
JOB NO. C-95-316-06
CHAMPAIGN PROJECT NO. 23-0000-07900-0408
CURTIS ROAD - F.A.P. ROUTE 807



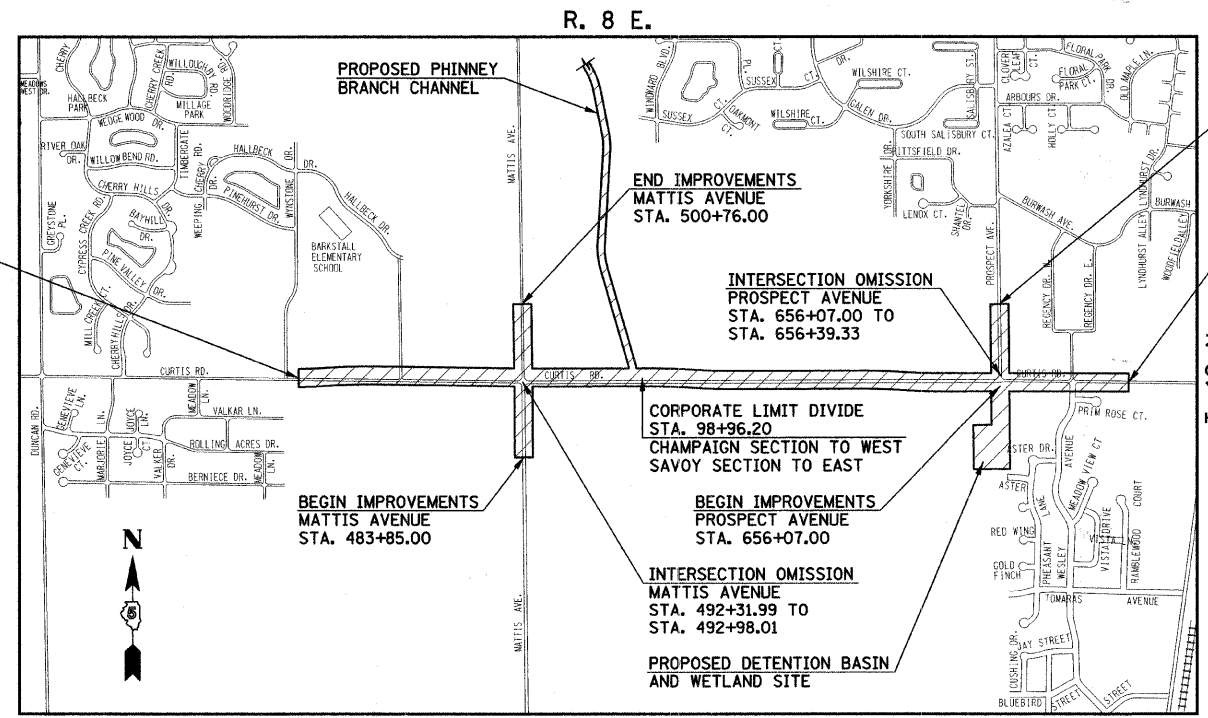
ILLINOIS HIGHWAY STANDARD DRAWINGS
(SEE SHEET NO. 3)



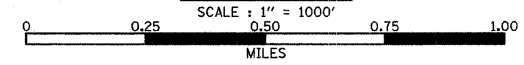
FULL SIZE PLANS HAVE BEEN PREPARED USING STANDARD ENGINEERING SCALES. REDUCED SIZED PLANS WILL NOT CONFORM TO STANDARD SCALES. IN MAKING MEASUREMENTS ON REDUCED PLANS, THE ABOVE SCALES MAY BE USED.

J.U.L.I.E.
JOINT UTILITY LOCATION INFORMATION FOR EXCAVATION
1-800-892-0123

CONTRACT NO. 91368



LOCATION MAP



TOTAL LENGTH OF CURTIS ROAD IMPROVEMENTS	= 9165.00 FEET	= 1.73 MILES
TOTAL LENGTH OF MATTIS AVENUE IMPROVEMENTS	= 1624.98 FEET	= 0.31 MILES
TOTAL LENGTH OF PROSPECT AVENUE IMPROVEMENTS	= 872.17 FEET	= 0.17 MILES
TOTAL LENGTH OF IMPROVEMENTS	= 11,662.15 FEET	= 2.21 MILES

PROFESSIONAL ENGINEER
 CLARE DIETZ, INC.
 DATE: **02 OCT 08**
 LICENSE EXPIRES 11-30-09



Clark Dietz
ENGINEERS
DESIGN FIRM REGISTRATION No. 184-000450

1817 SOUTH NEIL STREET
SUITE 100
CHAMPAIGN, IL 61820
PHONE: 217.373.8900
FAX: 217.373.8923

APPROVED October 6 2008
Jeff Blum
COUNTY ENGINEER

APPROVED Oct. 2 2008
W. Roland White
CHAMPAIGN CITY ENGINEER

APPROVED Oct. 2 2008
Grant Mann
VILLAGE OF SAVOY PUBLIC WORKS DIRECTOR

PASSED 10/23 2008
Daniel S. Sall
DISTRICT FIVE ENGINEER OF LOCAL ROADS & STREETS

Releasing For Bid Based on Limited Review 10/23 2008
Joseph E. Corral
DEPUTY DIRECTOR OF HIGHWAYS,
REGION THREE ENGINEER

STATE OF ILLINOIS
DEPARTMENT OF TRANSPORTATION