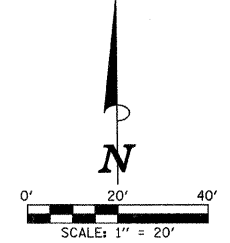
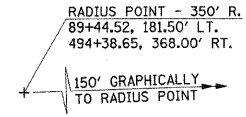


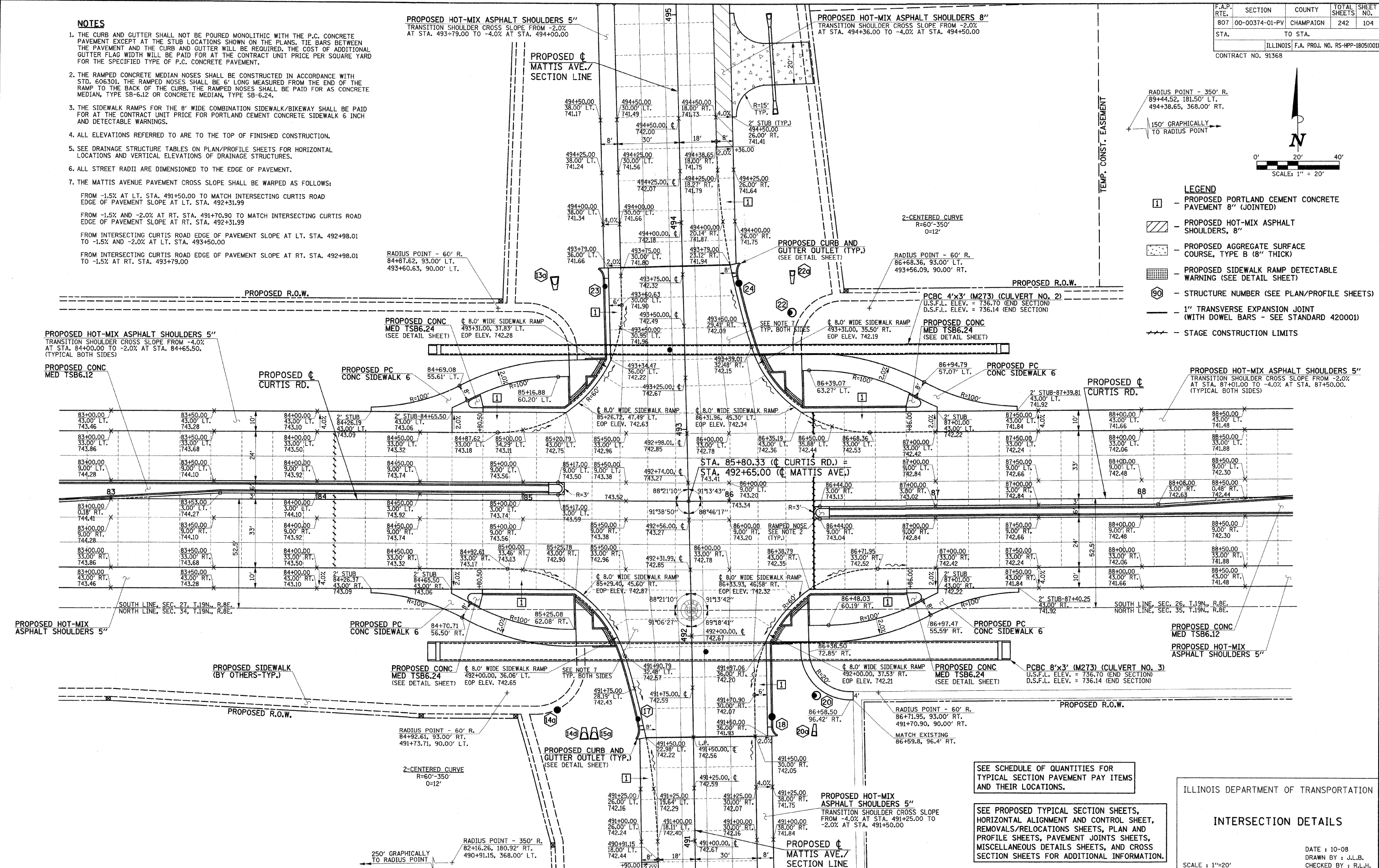
F.A.P. RTE.	SECTION	COUNTY	TOTAL SHEETS	SHEET NO.
807	00-00374-01-PV	CHAMPAIGN	242	104
STA.	TO STA.			
	ILLINOIS F.A. PROJ. NO. RS-HPP-1805(00)			
CONTRACT NO. 91368				

NOTES

- THE CURB AND GUTTER SHALL NOT BE POURED MONOLITHIC WITH THE P.C. CONCRETE PAVEMENT EXCEPT AT THE STUB LOCATIONS SHOWN ON THE PLANS. TIE BARS BETWEEN THE PAVEMENT AND THE CURB AND GUTTER WILL BE REQUIRED. THE COST OF ADDITIONAL GUTTER FLAG WIDTH WILL BE PAID FOR AT THE CONTRACT UNIT PRICE PER SQUARE YARD FOR THE SPECIFIED TYPE OF P.C. CONCRETE PAVEMENT.
- THE RAMPED CONCRETE MEDIAN NOSES SHALL BE CONSTRUCTED IN ACCORDANCE WITH STD. 606301. THE RAMPED NOSES SHALL BE 6' LONG MEASURED FROM THE END OF THE RAMP TO THE BACK OF THE CURB. THE RAMPED NOSES SHALL BE PAID FOR AS CONCRETE MEDIAN, TYPE SB-6.12 OR CONCRETE MEDIAN, TYPE SB-6.24.
- THE SIDEWALK RAMP FOR THE 8' WIDE COMBINATION SIDEWALK/BIKEWAY SHALL BE PAID FOR AT THE CONTRACT UNIT PRICE FOR PORTLAND CEMENT CONCRETE SIDEWALK 6 INCH AND DETECTABLE WARNINGS.
- ALL ELEVATIONS REFERRED TO ARE TO THE TOP OF FINISHED CONSTRUCTION.
- SEE DRAINAGE STRUCTURE TABLES ON PLAN/PROFILE SHEETS FOR HORIZONTAL LOCATIONS AND VERTICAL ELEVATIONS OF DRAINAGE STRUCTURES.
- ALL STREET RADII ARE DIMENSIONED TO THE EDGE OF PAVEMENT.
- THE MATTIS AVENUE PAVEMENT CROSS SLOPE SHALL BE WARPED AS FOLLOWS:
 FROM -1.5% AT LT. STA. 491+50.00 TO MATCH INTERSECTING CURTIS ROAD EDGE OF PAVEMENT SLOPE AT LT. STA. 492+31.99
 FROM -1.5% AND -2.0% AT RT. STA. 491+70.90 TO MATCH INTERSECTING CURTIS ROAD EDGE OF PAVEMENT SLOPE AT RT. STA. 492+31.99
 FROM INTERSECTING CURTIS ROAD EDGE OF PAVEMENT SLOPE AT LT. STA. 492+98.01 TO -1.5% AND -2.0% AT LT. STA. 493+50.00
 FROM INTERSECTING CURTIS ROAD EDGE OF PAVEMENT SLOPE AT RT. STA. 492+98.01 TO -1.5% AT RT. STA. 493+79.00



- LEGEND**
- 1 - PROPOSED PORTLAND CEMENT CONCRETE PAVEMENT 8" (JOINTED)
 - [Hatched Box] - PROPOSED HOT-MIX ASPHALT SHOULDERS, 8"
 - [Dotted Box] - PROPOSED AGGREGATE SURFACE COURSE, TYPE B (8" THICK)
 - [Grid Box] - PROPOSED SIDEWALK RAMP DETECTABLE WARNING (SEE DETAIL SHEET)
 - 90 - STRUCTURE NUMBER (SEE PLAN/PROFILE SHEETS)
 - 1" TRANSVERSE EXPANSION JOINT (WITH DOWEL BARS - SEE STANDARD 420001)
 - - - STAGE CONSTRUCTION LIMITS



SEE SCHEDULE OF QUANTITIES FOR TYPICAL SECTION PAVEMENT PAY ITEMS AND THEIR LOCATIONS.

SEE PROPOSED TYPICAL SECTION SHEETS, HORIZONTAL ALIGNMENT AND CONTROL SHEET, REMOVALS/RELOCATIONS SHEETS, PLAN AND PROFILE SHEETS, PAVEMENT JOINTS SHEETS, MISCELLANEOUS DETAILS SHEETS, AND CROSS SECTION SHEETS FOR ADDITIONAL INFORMATION.

ILLINOIS DEPARTMENT OF TRANSPORTATION

INTERSECTION DETAILS

SCALE: 1"=20'
 DATE: 10-08
 DRAWN BY: J.L.B.
 CHECKED BY: R.L.H.