

**BAR LAP TABLE**

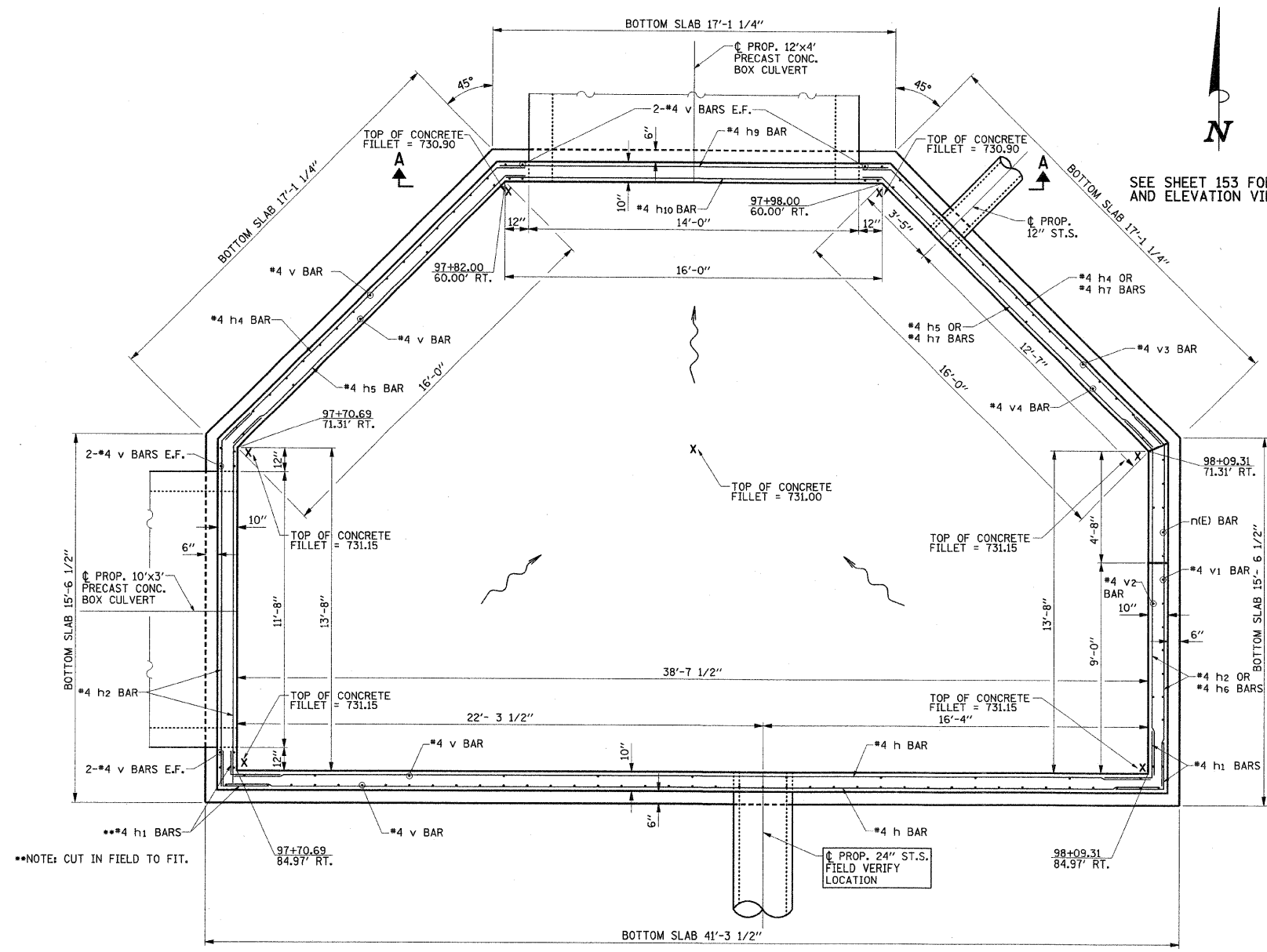
BAR SIZE	MIN. LAP
4	1'-5"
5	1'-9"

**BILL OF MATERIAL**

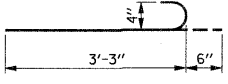
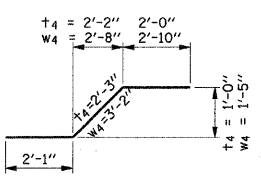
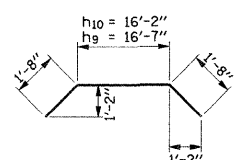
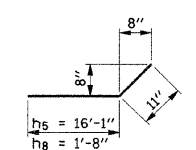
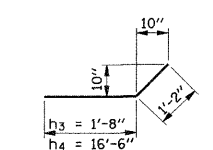
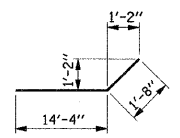
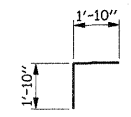
Bar	No.	Size	Length	Shape
d	16	#4	4'-4"	
h	20	#4	20'-8"	
h1	20	#4	3'-8"	
h2	10	#4	16'-0"	
h3	6	#4	2'-10"	
h4	10	#4	17'-8"	
h5	10	#4	17'-0"	
h6	4	#4	11'-0"	
h7	6	#4	16'-8"	
h8	6	#4	2'-7"	
h9	2	#4	19'-11"	
h10	2	#4	19'-6"	
n(E)	128	#4	3'-9"	
t	16	#5	39'-11"	
t1	16	#4	40'-11"	
t2*	6	#5	56'-6"	
t3*	6	#4	56'-6"	
t4	17	#5	6'-4"	
v	88	#4	5'-1"	
v1*	5	#4	6'-8"	
v2*	2	#4	6'-8"	
v3*	8	#4	6'-8"	
v4*	2	#4	6'-8"	
w*	12	#4	42'-6"	
w1*	12	#5	42'-6"	
w2	17	#5	27'-3"	
w3	17	#4	27'-3"	
w4	19	#5	8'-1"	

Structural Excavation	Cu. Yd.	352
Concrete Structures	Cu. Yd.	53.3
Class MS Concrete	Cu. Yd.	13.6
Reinforcement Bars	Pound	5200
Pedestrian Railing	Foot	100.0

\*See Bar Cutting Diagrams

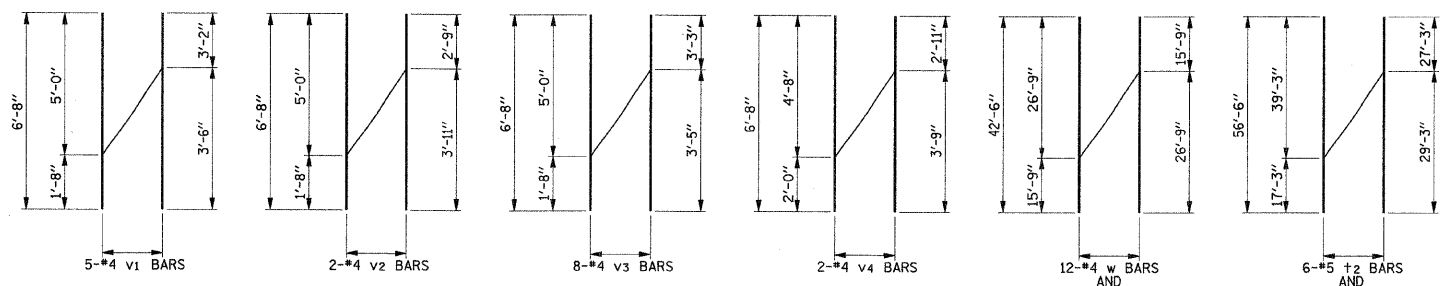


SEE SHEET 153 FOR SECTION A-A AND ELEVATION VIEWS



**BAR BENDING DIAGRAMS**

**PLAN**



**BAR CUTTING DIAGRAMS**

Structural Engineer  
 Clark Dietz, Inc.  
 DATE: 10/2/08  
 License Expires 11-30-2010



ILLINOIS DEPARTMENT OF TRANSPORTATION

**DROP BOX DETAIL  
 STA. 97+90, RT.**

DATE: 10-08  
 DRAWN BY: J.L.B.  
 CHECKED BY: S.M.M.