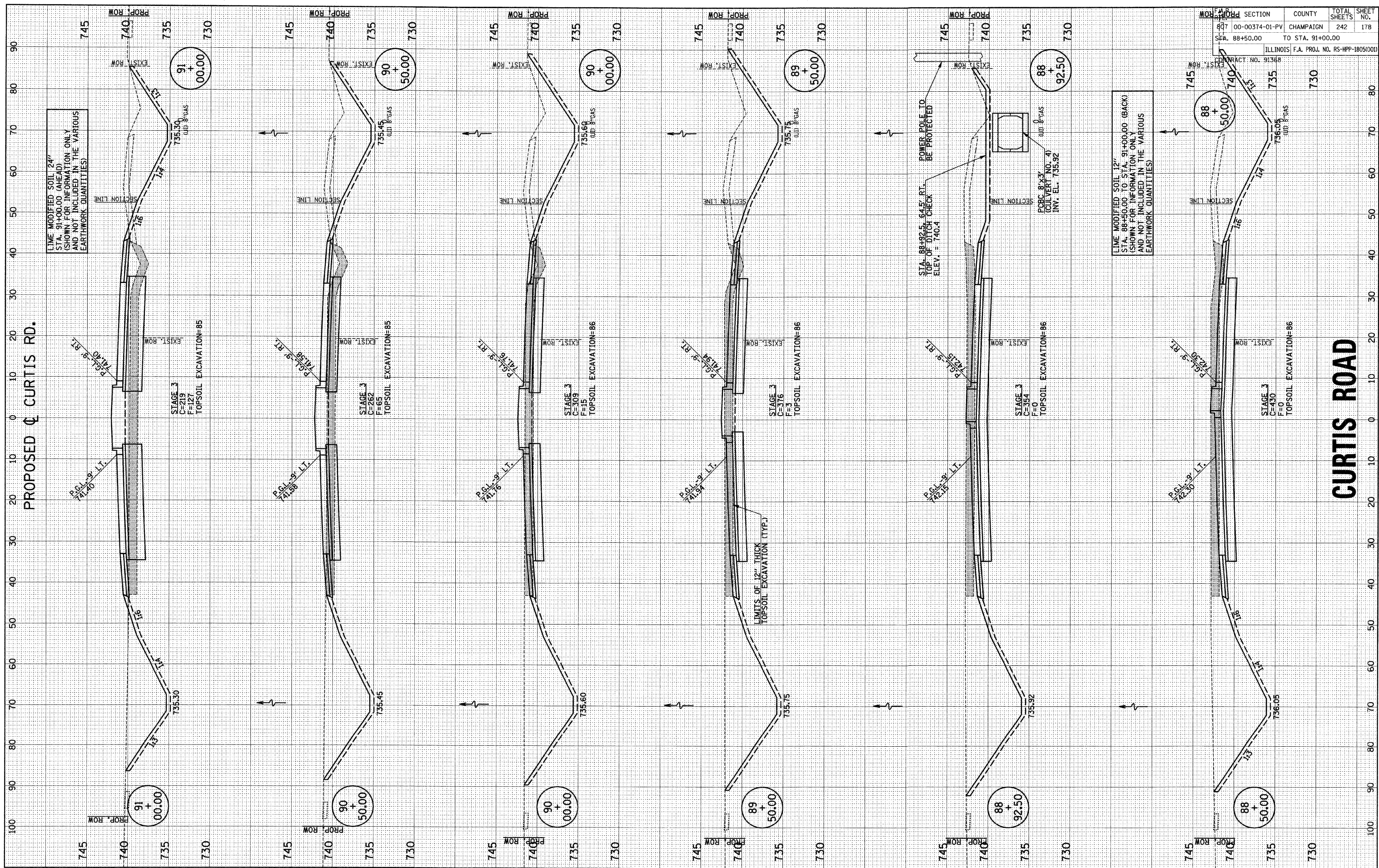


FINAL SURVEY PLOTTED NOTE BOOK NO. BY DATE

ORIGINAL SURVEY PLOTTED NOTE BOOK NO. BY DATE



LIME MODIFIED SOIL 24"
 STA. 91+00.00 (AHEAD)
 (SHOWN FOR INFORMATION ONLY
 AND NOT INCLUDED IN THE VARIOUS
 EARTHWORK QUANTITIES)

STAGE 3
 C-219
 F-127
 TOPSOIL EXCAVATION=85

STAGE 3
 C-282
 F-65
 TOPSOIL EXCAVATION=85

STAGE 3
 C-309
 F-15
 TOPSOIL EXCAVATION=86

STAGE 3
 C-376
 F-3
 TOPSOIL EXCAVATION=86

STAGE 3
 C-384
 F-0
 TOPSOIL EXCAVATION=86

STAGE 3
 C-430
 F-0
 TOPSOIL EXCAVATION=86

POWER POLE TO
 BE PROTECTED
 STA. 88+92.5, 64.5' RT.
 TOP OF DITCH CHECK
 ELEV. = 740.4

FCBC 8"x3"
 CULVERT (NO. 4)
 INV. EL. 735.92

LIME MODIFIED SOIL 12"
 STA. 88+50.00 TO STA. 91+00.00 (BACK)
 (SHOWN FOR INFORMATION ONLY
 AND NOT INCLUDED IN THE VARIOUS
 EARTHWORK QUANTITIES)

PROJECT NO.	00-00374-01-PV	COUNTY	CHAMPAIGN	TOTAL SHEETS	242	SHEET NO.	178
STA.	88+50.00	TO STA. 91+00.00		ILLINOIS F.A. PROJ. NO. RS-HPP-1805(000)			