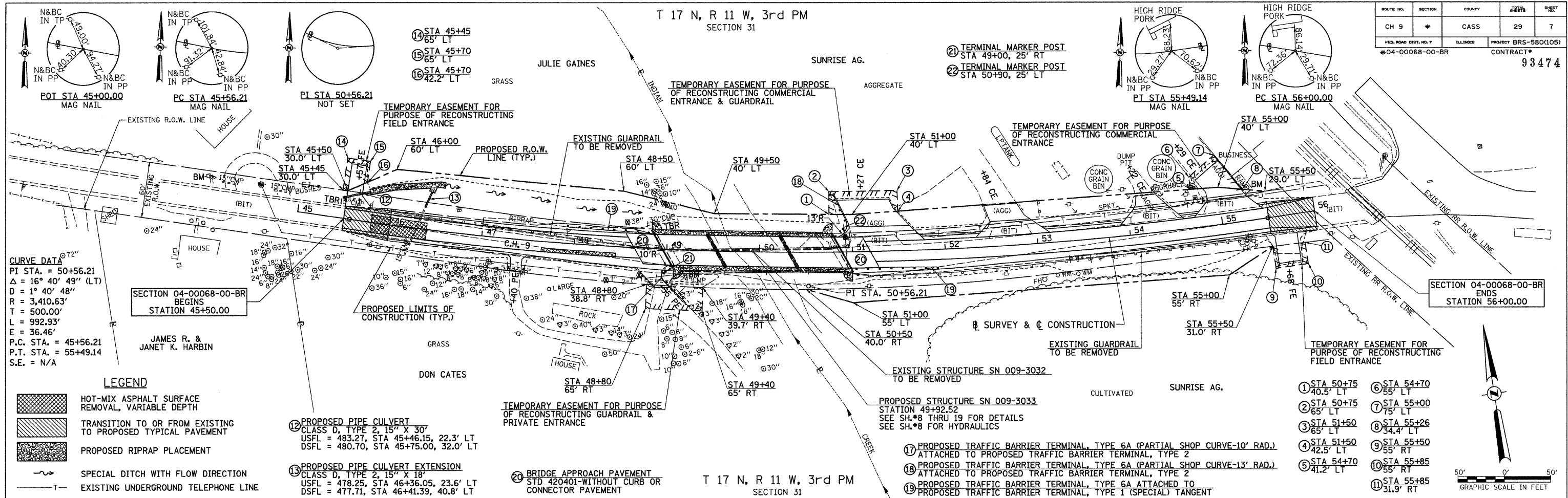


T 17 N, R 11 W, 3rd PM
SECTION 31

ROUTE NO.	SECTION	COUNTY	TOTAL SHEETS	SHEET NO.
CH 9	*	CASS	29	7
FED. ROAD DIST. NO. 7		ILLINOIS	PROJECT BRS-580(105)	
*04-00068-00-BR		CONTRACT		93474



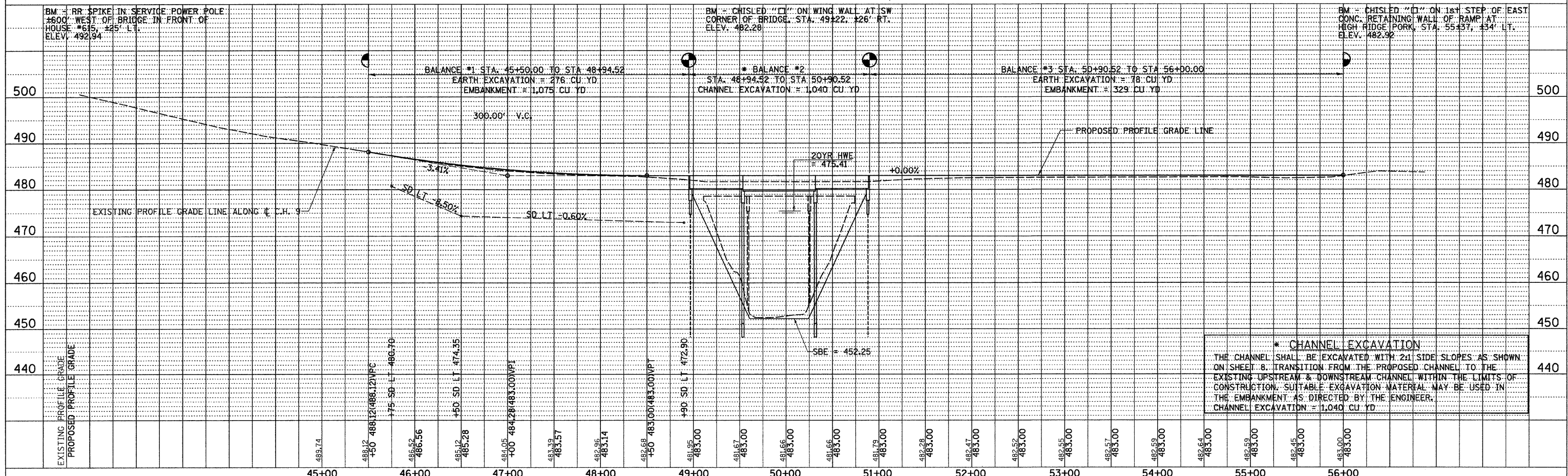
CURVE DATA
 PI STA. = 50+56.21
 $\Delta = 16^\circ 40' 49''$ (LT)
 $D = 1^\circ 40' 48''$
 $R = 3,410.63'$
 $T = 500.00'$
 $L = 992.93'$
 $E = 36.46'$
 P.C. STA. = 45+56.21
 P.T. STA. = 55+49.14
 S.E. = N/A

LEGEND

- HOT-MIX ASPHALT SURFACE REMOVAL, VARIABLE DEPTH
- TRANSITION TO OR FROM EXISTING TO PROPOSED TYPICAL PAVEMENT
- PROPOSED RIPRAP PLACEMENT
- SPECIAL DITCH WITH FLOW DIRECTION
- EXISTING UNDERGROUND TELEPHONE LINE

- 14 STA 45+45 65' LT
- 15 STA 45+70 65' LT
- 16 STA 45+70 42.2' LT
- 17 PROPOSED PIPE CULVERT CLASS D, TYPE 2, 15" X 30" USFL = 483.27, STA 45+46.15, 22.3' LT DSFL = 480.70, STA 45+75.00, 32.0' LT
- 18 PROPOSED PIPE CULVERT EXTENSION CLASS D, TYPE 2, 15" X 18" USFL = 478.25, STA 46+36.05, 23.6' LT DSFL = 477.71, STA 46+41.39, 40.8' LT
- 19 PROPOSED TRAFFIC BARRIER TERMINAL, TYPE 6A (PARTIAL SHOP CURVE-10' RAD.) ATTACHED TO PROPOSED TRAFFIC BARRIER TERMINAL, TYPE 2
- 20 PROPOSED TRAFFIC BARRIER TERMINAL, TYPE 6A (PARTIAL SHOP CURVE-13' RAD.) ATTACHED TO PROPOSED TRAFFIC BARRIER TERMINAL, TYPE 2
- 21 PROPOSED TRAFFIC BARRIER TERMINAL, TYPE 6A ATTACHED TO PROPOSED TRAFFIC BARRIER TERMINAL, TYPE 1 (SPECIAL) TANGENT

T 17 N, R 11 W, 3rd PM
SECTION 31



*** CHANNEL EXCAVATION**
 THE CHANNEL SHALL BE EXCAVATED WITH 2:1 SIDE SLOPES AS SHOWN ON SHEET 8. TRANSITION FROM THE PROPOSED CHANNEL TO THE EXISTING UPSTREAM & DOWNSTREAM CHANNEL WITHIN THE LIMITS OF CONSTRUCTION. SUITABLE EXCAVATION MATERIAL MAY BE USED IN THE EMBANKMENT AS DIRECTED BY THE ENGINEER.
 CHANNEL EXCAVATION = 1,040 CU YD