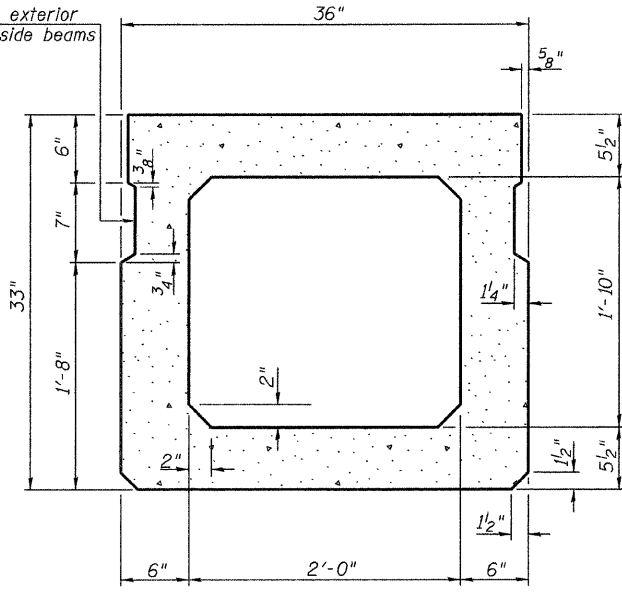
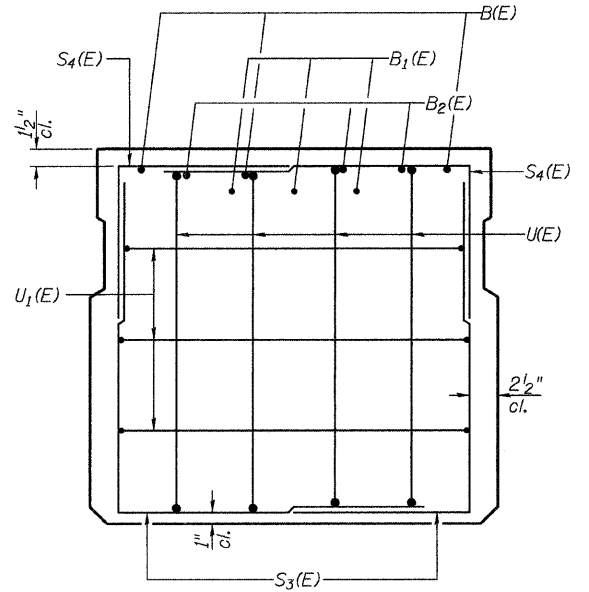


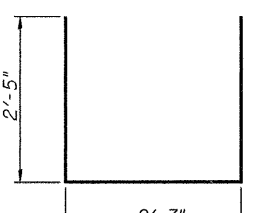
**SECTION C-C**



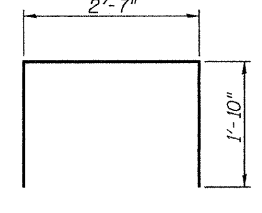
**SECTION A-A**  
(Showing dimensions)



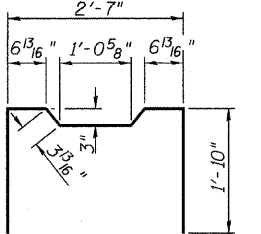
**VIEW B-B**



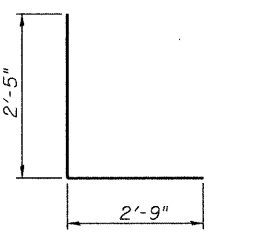
**BAR S(E)**



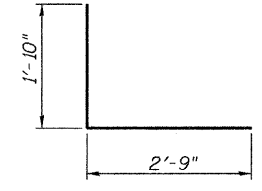
**BAR S1(E)**



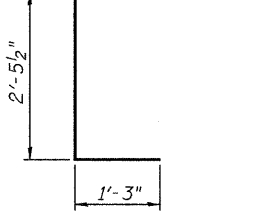
**BAR S2(E)**



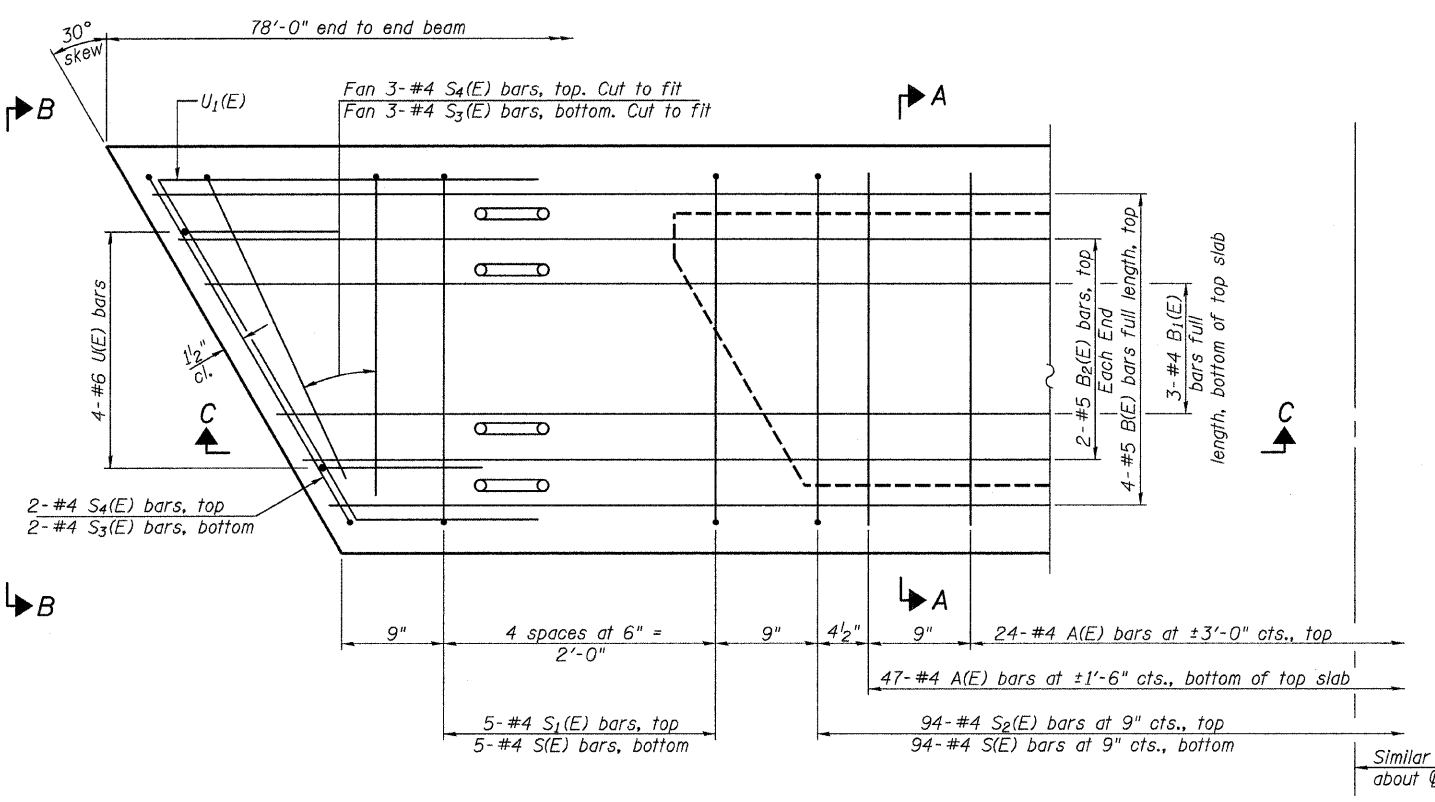
**BAR S3(E)**



**BAR S4(E)**



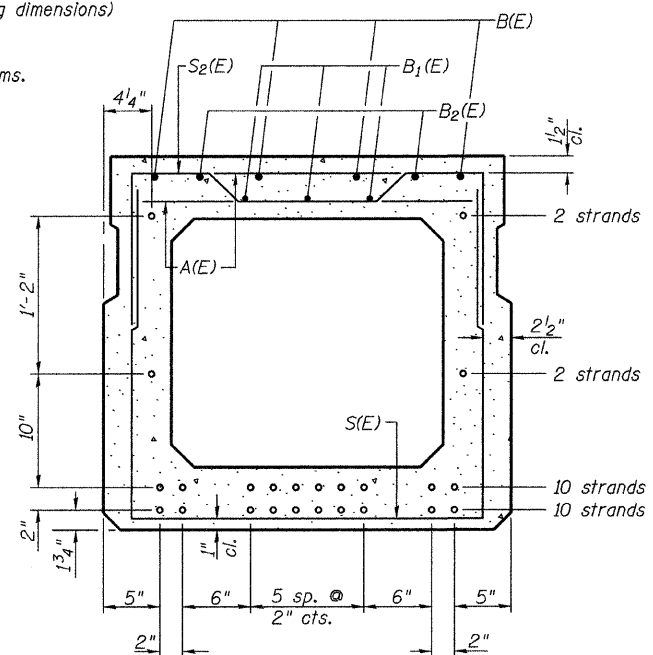
**BAR U(E)**



**PLAN VIEW**

Note: Spacing of S(E) and S2(E) bars may be adjusted up to 4" in the immediate area of the transverse tie diaphragms to miss the block outs for the transverse ties.

\*\*Rail post anchor devices (Sheet 7 of 12) to be cast into exterior face of outside beams.



**SECTION A-A**

24-1/2" Strands Each Strand Stressed to 30,900 Lbs.  
10-Strands 1 3/4" up, 10-Strands 3 3/4" up,  
2-Strands 1'-1 3/4" up, 2-Strands 2'-3 3/4" up

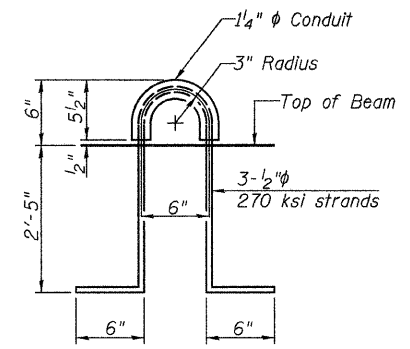
Note: Place the number of strands specified in each row symmetrically about the centerline of beam in the permissible strand locations shown.

**BAR LIST - ONE BEAM ONLY**

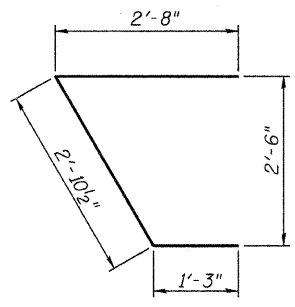
(For information only)

Bar	No.	Size	Length	Shape
A(E)	71	#4	2'-7"	—
B(E)	4	#5	*77'-9"	—
B1(E)	3	#4	*77'-9"	—
B2(E)	4	#5	15'-9"	—
S(E)	104	#4	7'-5"	┌┐
S1(E)	10	#4	6'-3"	┌┐
S2(E)	94	#4	6'-6"	┌┐
S3(E)	10	#4	5'-2"	┌┐
S4(E)	10	#4	4'-7"	┌┐
U(E)	8	#6	5'-0"	┌┐
U1(E)	6	#4	6'-10"	┌┐

Note: See sheet 5 of 12 for additional details and Bill of Material.



**LIFTING LOOP DETAIL**



**BAR U1(E)**

\* Total Length, Lap as necessary

**SUPERSTRUCTURE DETAILS - SPAN 2**  
**COUNTY HIGHWAY 9 OVER**  
**INDIAN CREEK**  
**SEC. 04-00068-00-BR**  
**CASS COUNTY**  
**STATION 49+92.52**