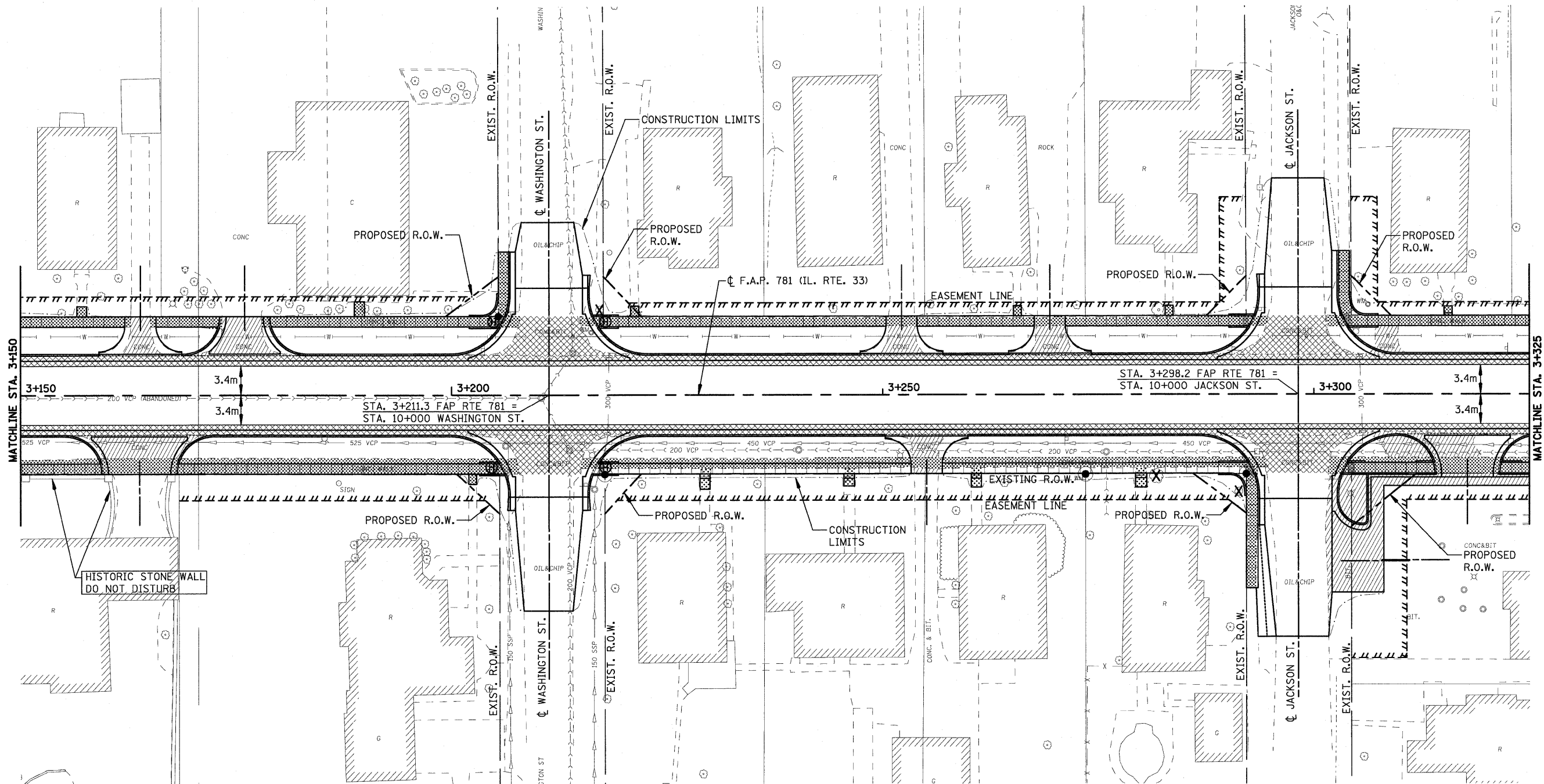
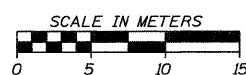


F.A.P. RTE.	SECTION	COUNTY	TOTAL SHEETS	SHEET NO.
781	1YRS, 2ZRS-1	CRAWFORD	378	51
STA. 3+150		TO STA. 3+325		
FED. ROAD DIST. NO.		ILLINOIS	FED. AID PROJECT	



**LEGEND**

- DRIVEWAY PAVEMENT REMOVAL (INCLUDES ALL MATERIAL ENCOUNTERED)
- PAVEMENT REMOVAL (INCLUDES ALL MATERIAL ENCOUNTERED)
- SIDEWALK REMOVAL (INCLUDES STEPS)



REVISIONS	
NAME	DATE

ILLINOIS DEPARTMENT OF TRANSPORTATION

**REMOVAL ITEMS**

SCALE \_\_\_\_\_ DRAWN BY EDW  
 DATE APRIL 16, 2008 CHECKED BY RGH

PLOT DATE = 4/16/2008  
FILE NAME = H:\1420\70051\REN250.04.dgn

H. M. & G. NO. 4420