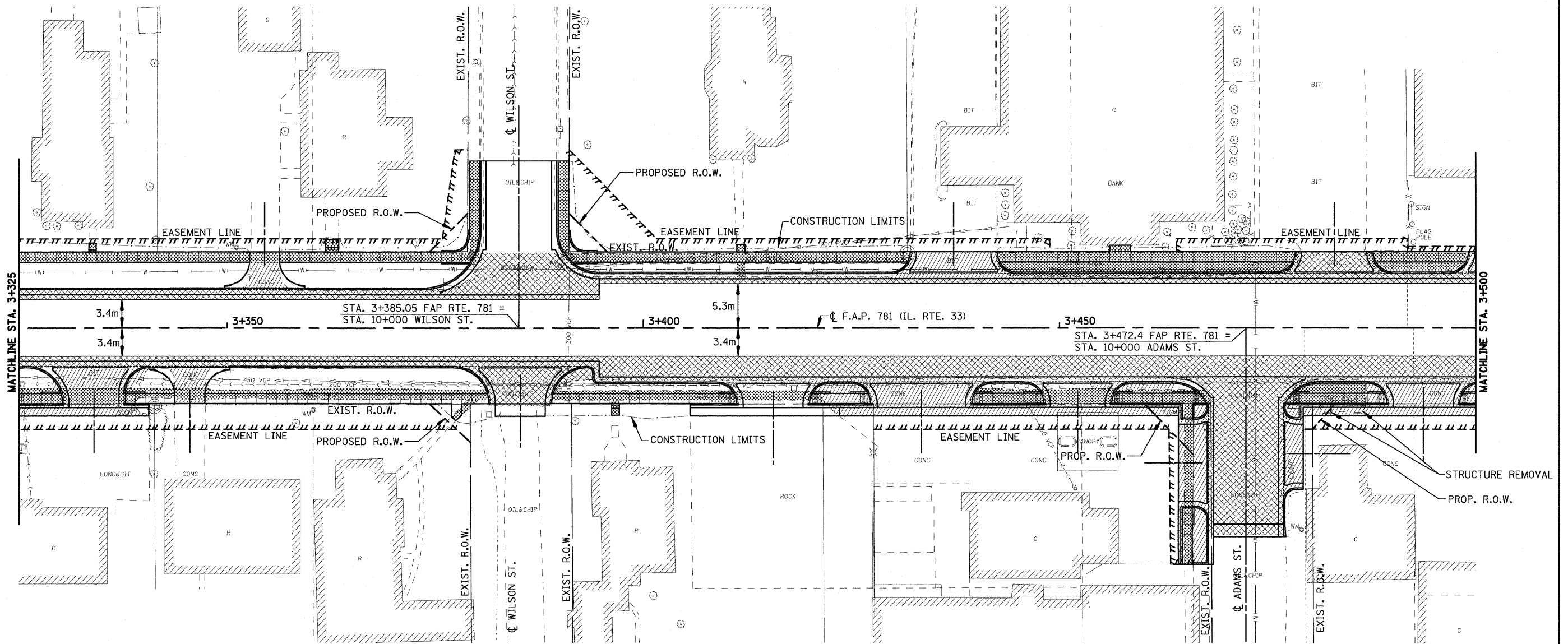
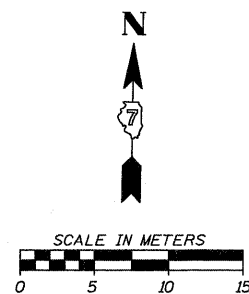


F.A.P. RTE.	SECTION	COUNTY	TOTAL SHEETS	SHEET NO.
781	1YRS, 2ZRS-1	CRAWFORD	378	52
STA. 3+325		TO STA. 3+500		
FED. ROAD DIST. NO.		ILLINOIS	FED. AID PROJECT	



LEGEND

- DRIVEWAY PAVEMENT REMOVAL (INCLUDES ALL MATERIAL ENCOUNTERED)
- PAVEMENT REMOVAL (INCLUDES ALL MATERIAL ENCOUNTERED)
- SIDEWALK REMOVAL (INCLUDES STEPS)
- HANDICAP RAMP



REVISIONS	
NAME	DATE

ILLINOIS DEPARTMENT OF TRANSPORTATION	
REMOVAL ITEMS	
SCALE	DRAWN BY EDW
DATE APRIL 18, 2008	CHECKED BY RGH

PLOT DATE = 4/18/2008
FILE NAME = H:\4428\78052_REV256.dwg