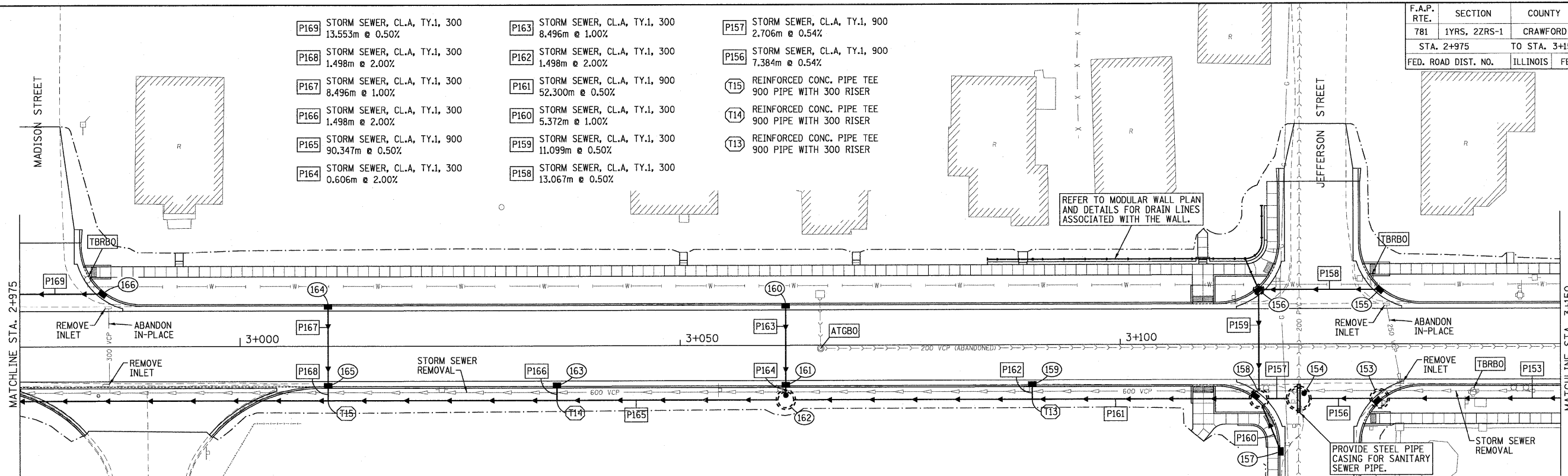
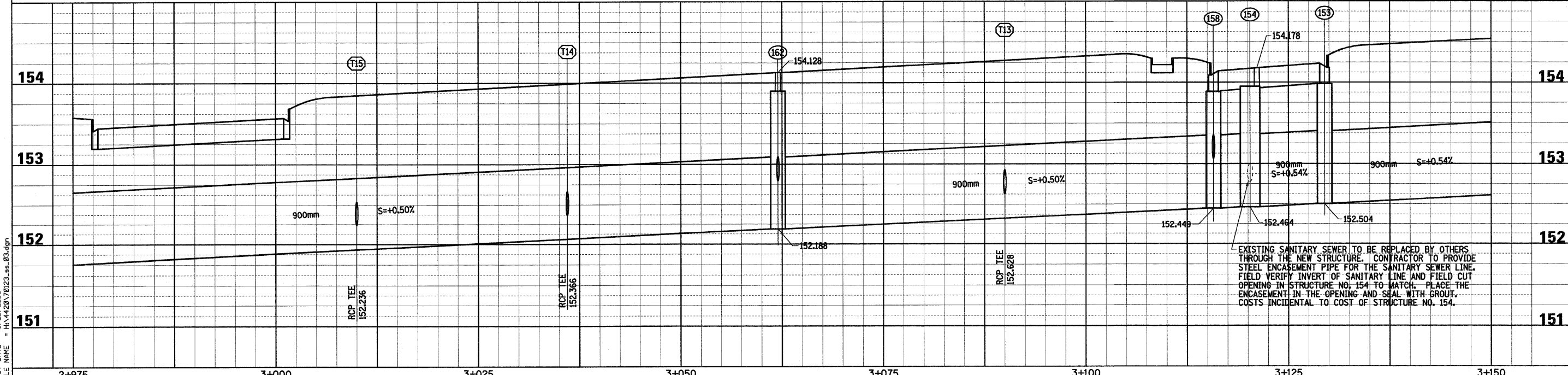
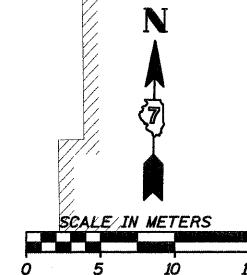


| F.A.P. RTE. | SECTION | COUNTY | TOTAL SHEETS | SHEET NO. |
|---------------------|--------------|------------------|--------------|-----------|
| 781 | 1YRS, 2ZRS-1 | CRAWFORD | 378 | 123 |
| STA. 2+975 | | TO STA. 3+150 | | |
| FED. ROAD DIST. NO. | ILLINOIS | FED. AID PROJECT | | |

- | | | |
|--|--|--|
| P169 STORM SEWER, CL.A, TY.1, 300 13.553m @ 0.50% | P163 STORM SEWER, CL.A, TY.1, 300 8.496m @ 1.00% | P157 STORM SEWER, CL.A, TY.1, 900 2.706m @ 0.54% |
| P168 STORM SEWER, CL.A, TY.1, 300 1.498m @ 2.00% | P162 STORM SEWER, CL.A, TY.1, 300 1.498m @ 2.00% | P156 STORM SEWER, CL.A, TY.1, 900 7.384m @ 0.54% |
| P167 STORM SEWER, CL.A, TY.1, 300 8.496m @ 1.00% | P161 STORM SEWER, CL.A, TY.1, 900 52.300m @ 0.50% | T15 REINFORCED CONC. PIPE TEE 900 PIPE WITH 300 RISER |
| P166 STORM SEWER, CL.A, TY.1, 300 1.498m @ 2.00% | P160 STORM SEWER, CL.A, TY.1, 300 5.372m @ 1.00% | T14 REINFORCED CONC. PIPE TEE 900 PIPE WITH 300 RISER |
| P165 STORM SEWER, CL.A, TY.1, 900 90.347m @ 0.50% | P159 STORM SEWER, CL.A, TY.1, 300 11.099m @ 0.50% | T13 REINFORCED CONC. PIPE TEE 900 PIPE WITH 300 RISER |
| P164 STORM SEWER, CL.A, TY.1, 300 0.606m @ 2.00% | P158 STORM SEWER, CL.A, TY.1, 300 13.067m @ 0.50% | |



- | | | | |
|---|--|---|---|
| 166 INLET TY.A, TY.3 F&G STA. 2+984.395, 6.000m LT. GRATE 153.423 INV. 152.465 | 162 MH. TY.A, RESTRICTED DEPTH 1.8m DIA., TY.1 FRAME, CL. LID STA. 3+062.000, 6.200m RT. SEE DETAIL FOR FRAME OFFSET TOP 154.128 INV.(E,W) 152.188 INV.(N) 152.798 | 158 MH. TY.A, RESTRICTED DEPTH 1.8m DIA., TY.3 F&G STA. 3+115.748, 6.200m RT. SEE DETAIL FOR GRATE OFFSET GRATE 154.117 INV.(E,W) 152.449 INV.(N,S) 153.059 | 155 INLET TY.A, TY.3 F&G STA. 3+129.452, 6.200m LT. GRATE 154.151 INV. 153.180 |
| 165 INLET TY.A, TY.3 F&G STA. 3+010.000, 4.475m RT. GRATE 153.550 INV. 152.266 | 161 INLET TY.A, TY.3 F&G STA. 3+062.000, 4.475m RT. GRATE 153.831 INV. 152.810 | 157 INLET TY.A, TY.3 F&G STA. 3+118.225, 12.200m RT. GRATE 154.317 INV. 153.112 | 154 MH. TY.A, RESTRICTED DEPTH 2.4m DIA., TY.1 FRAME, CL. LID STA. 3+120.261, 6.200m RT. SEE DETAIL FOR FRAME OFFSET TOP 154.178 INV.(E,W) 152.464 |
| 164 INLET TY.A, TY.3 F&G STA. 3+010.000, 4.475m LT. GRATE 153.550 INV. 152.351 | 160 INLET TY.A, TY.3 F&G STA. 3+062.000, 4.475m LT. GRATE 153.831 INV. 152.895 | 156 INLET TY.B, RESTRICTED DEPTH 0.9m DIA., TY.3 F&G STA. 3+115.748, 6.200m LT. GRATE 154.140 INV. 153.115 | 153 MH. TY.A, RESTRICTED DEPTH 1.8m DIA., TY.3 F&G STA. 3+129.452, 6.200m RT. SEE DETAIL FOR GRATE OFFSET GRATE 154.182 INV.(E,W) 152.504 |
| 163 INLET TY.A, TY.3 F&G STA. 3+036.000, 4.475m RT. GRATE 153.690 INV. 152.396 | 159 INLET TY.A, TY.3 F&G STA. 3+090.000, 4.475m RT. GRATE 153.980 INV. 152.658 | | |



EXISTING SANITARY SEWER TO BE REPLACED BY OTHERS THROUGH THE NEW STRUCTURE. CONTRACTOR TO PROVIDE STEEL ENCASMENT PIPE FOR THE SANITARY SEWER LINE. FIELD VERIFY INVERT OF SANITARY LINE AND FIELD CUT OPENING IN STRUCTURE NO. 154 TO MATCH PLACE THE ENCASMENT IN THE OPENING AND SEAL WITH GROUT. COSTS INCIDENTAL TO COST OF STRUCTURE NO. 154.