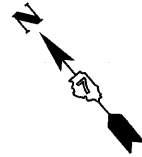


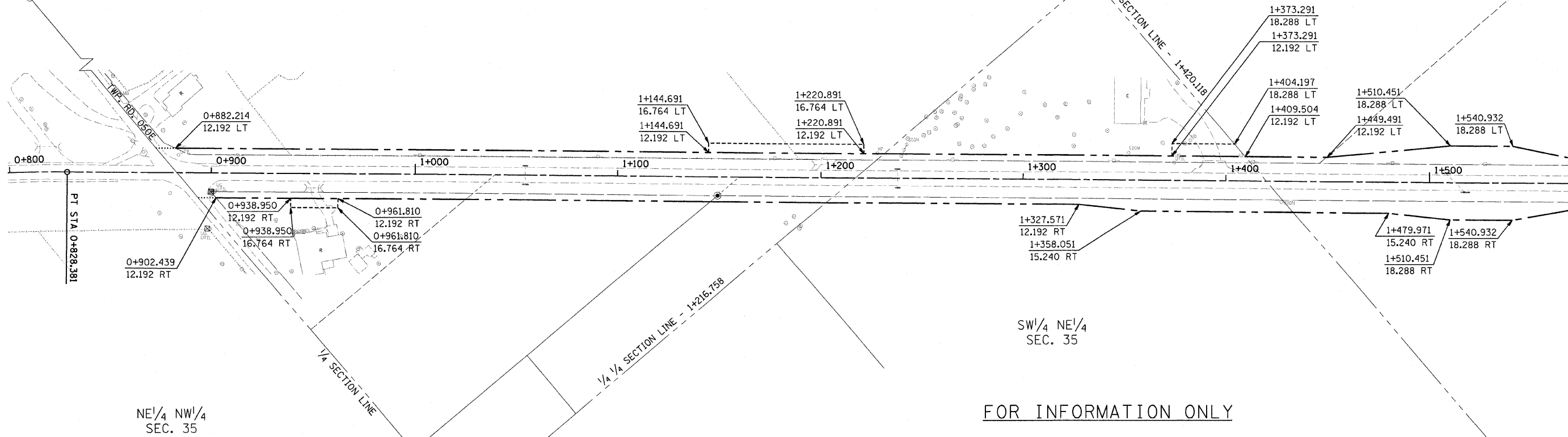
CONTRACT NO. 94533				
F.A. RTE.	SECTION	COUNTY	TOTAL SHEETS	SHEET NO.
781	1YRS., 2ZRS-1	CRAWFORD	318	201
STA. _____		TO STA. _____		
FED. ROAD DIST. NO.	ILLINOIS	FED. AID PROJECT		



NE 1/4 NE 1/4  
SEC. 35

NW 1/4 NE 1/4  
SEC. 35

IRON PIN  
NORTH QUARTER CORNER  
SECTION 35  
STA. 0+769.893 149.158 LT.  
MONUMENT RECORD  
DOC. #2002-00919



NE 1/4 NW 1/4  
SEC. 35

SW 1/4 NE 1/4  
SEC. 35

FOR INFORMATION ONLY

THESE METRIC RIGHT-OF-WAY PLANS ARE FOR INFORMATION ONLY. THEY WERE DEVELOPED FROM THE OFFICIAL ENGLISH VERSION OF THE RIGHT-OF-WAY PLANS. STATIONING AND DIMENSIONS CONVERTED TO METRIC. FINAL RIGHT-OF-WAY SHALL BE DETERMINED BY THE ORIGINAL ENGLISH PLANS.

IRON PIN  
CENTER OF SECTION  
SECTION 35  
STA. 1+291.897 476.340 RT.  
MONUMENT RECORD  
DOC. #2002-00919

CONTRACT NO. 94533

RIGHT OF WAY PLANS FAP ROUTE 781	
PROJECT	SECTION 1YRS, 2ZRS-1
STATION 0+800	TO
STATION 1+560	
COUNTY CRAWFORD	
SCALE 1:1000	SHEET 1 OF 22