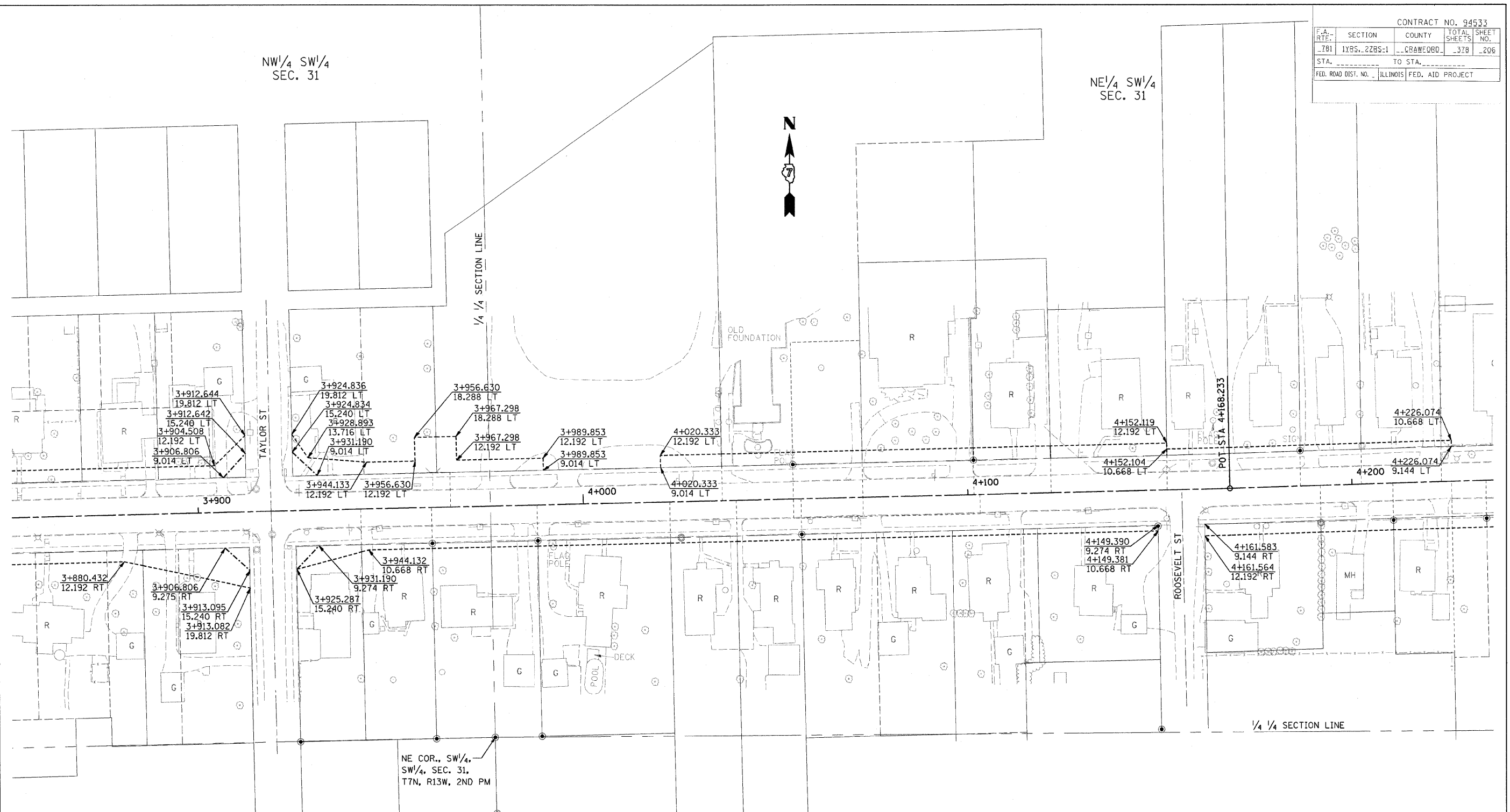


CONTRACT NO. 94533				
F.A. RTE.	SECTION	COUNTY	TOTAL SHEETS	SHEET NO.
781	1YRS. 2ZRS-1	CRAWFORD	378	206
STA.		TO STA.		
FED. ROAD DIST. NO.		ILLINOIS FED. AID PROJECT		

NW 1/4 SW 1/4
SEC. 31

NE 1/4 SW 1/4
SEC. 31



FOR INFORMATION ONLY

THESE METRIC RIGHT-OF-WAY PLANS ARE FOR INFORMATION ONLY. THEY WERE DEVELOPED FROM THE OFFICIAL ENGLISH VERSION OF THE RIGHT-OF-WAY PLANS. STATIONING AND DIMENSIONS CONVERTED TO METRIC. FINAL RIGHT-OF-WAY SHALL BE DETERMINED BY THE ORIGINAL ENGLISH PLANS.

CONTRACT NO. 94533

RIGHT OF WAY PLANS
FAP ROUTE 781
PROJECT SECTION 1YRS, 2ZRS-1
STATION 3+855 TO
STATION 4+235
COUNTY CRAWFORD
SCALE 1:500 SHEET 6 OF 22