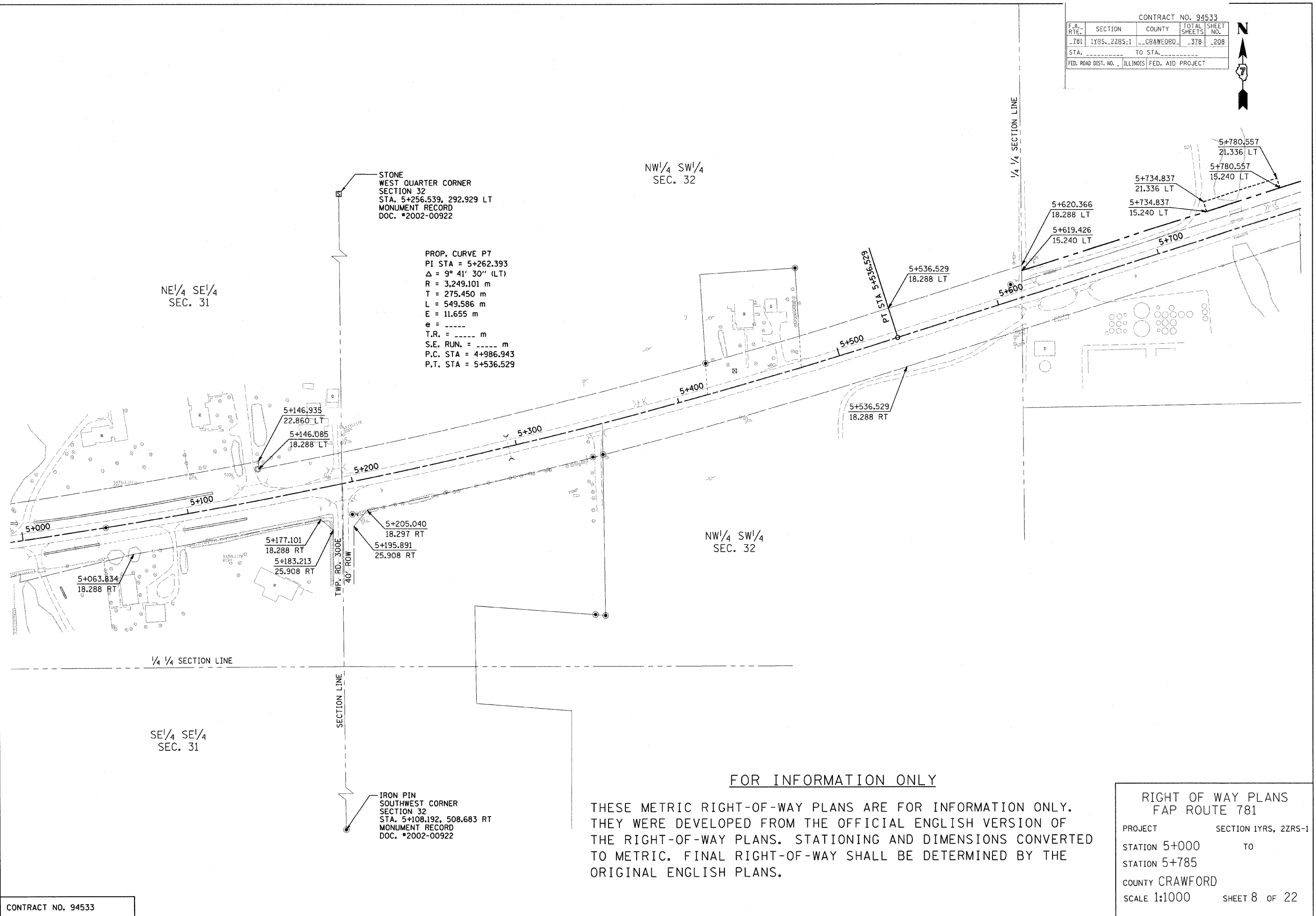


CONTRACT NO. 94533				
F.A. RTE.	SECTION	COUNTY	TOTAL SHEETS	SHEET NO.
781	1YRS-2ZRS-1	CRAWFORD	378	208
STA.		TO STA.		
FED. ROAD DIST. NO.		ILLINOIS FED. AID PROJECT		



STONE
WEST QUARTER CORNER
SECTION 32
STA. 5+256.539, 292.929 LT
MONUMENT RECORD
DOC. #2002-00922

PROP. CURVE P7
PI STA = 5+262.393
 $\Delta = 9^\circ 41' 30''$ (LT)
R = 3,249.101 m
T = 275.450 m
L = 549.586 m
E = 11.655 m
e = -----
T.R. = ----- m
S.E. RUN. = ----- m
P.C. STA = 4+986.943
P.T. STA = 5+536.529

NE 1/4 SE 1/4
SEC. 31

NW 1/4 SW 1/4
SEC. 32

NW 1/4 SW 1/4
SEC. 32

SE 1/4 SE 1/4
SEC. 31

IRON PIN
SOUTHWEST CORNER
SECTION 32
STA. 5+108.192, 508.683 RT
MONUMENT RECORD
DOC. #2002-00922

FOR INFORMATION ONLY

THESE METRIC RIGHT-OF-WAY PLANS ARE FOR INFORMATION ONLY. THEY WERE DEVELOPED FROM THE OFFICIAL ENGLISH VERSION OF THE RIGHT-OF-WAY PLANS. STATIONING AND DIMENSIONS CONVERTED TO METRIC. FINAL RIGHT-OF-WAY SHALL BE DETERMINED BY THE ORIGINAL ENGLISH PLANS.

RIGHT OF WAY PLANS
FAP ROUTE 781
PROJECT SECTION 1YRS, 2ZRS-1
STATION 5+000 TO
STATION 5+785
COUNTY CRAWFORD
SCALE 1:1000 SHEET 8 OF 22