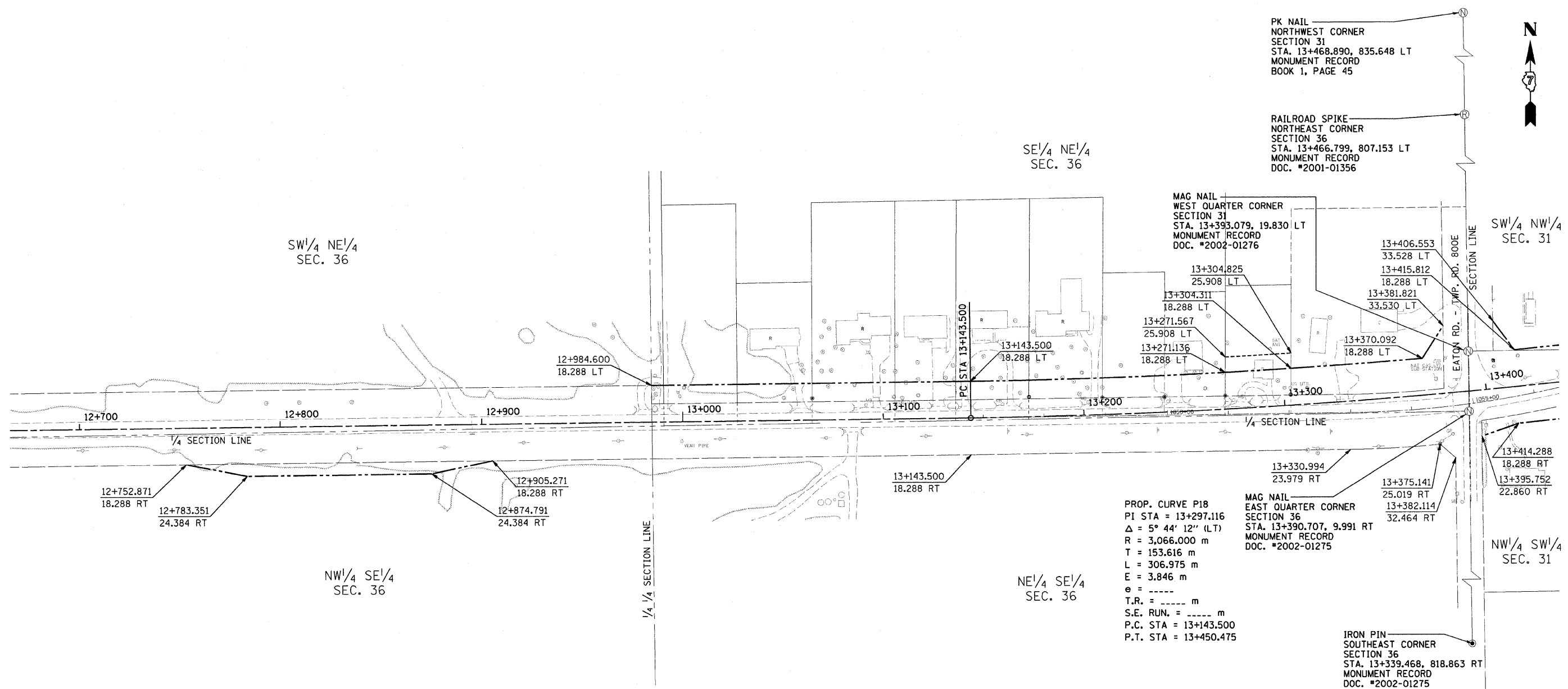


| | | | | |
|--------------------|--------------|---|--------------|-----------|
| CONTRACT NO. 94533 | | | | |
| F.A. RTE. | SECTION | COUNTY | TOTAL SHEETS | SHEET NO. |
| 781 | 1YRS, 2ZRS-1 | CRAWFORD | 378 | 218 |
| STA. TO STA. | | FED. ROAD DIST. NO. ILLINOIS FED. AID PROJECT | | |



FOR INFORMATION ONLY

THESE METRIC RIGHT-OF-WAY PLANS ARE FOR INFORMATION ONLY. THEY WERE DEVELOPED FROM THE OFFICIAL ENGLISH VERSION OF THE RIGHT-OF-WAY PLANS. STATIONING AND DIMENSIONS CONVERTED TO METRIC. FINAL RIGHT-OF-WAY SHALL BE DETERMINED BY THE ORIGINAL ENGLISH PLANS.

RIGHT OF WAY PLANS
FAP ROUTE 781
 PROJECT SECTION 1YRS, 2ZRS-1
 STATION 12+670 TO
 STATION 13+430
 COUNTY CRAWFORD
 SCALE 1:1000 SHEET 18 OF 22