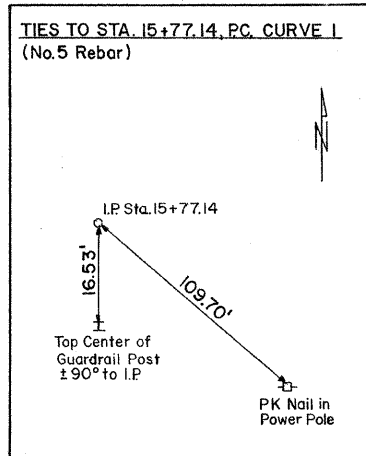
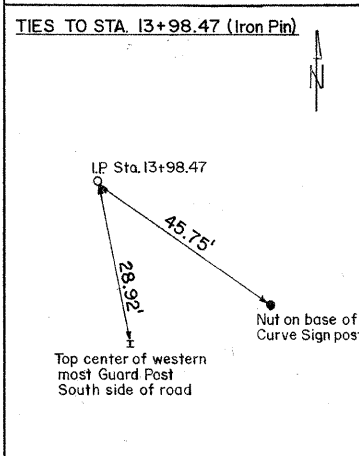
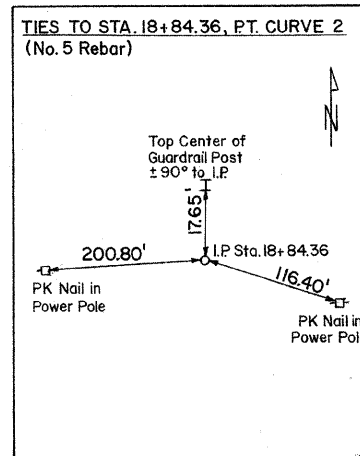
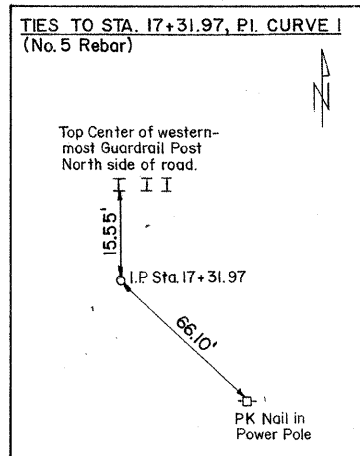


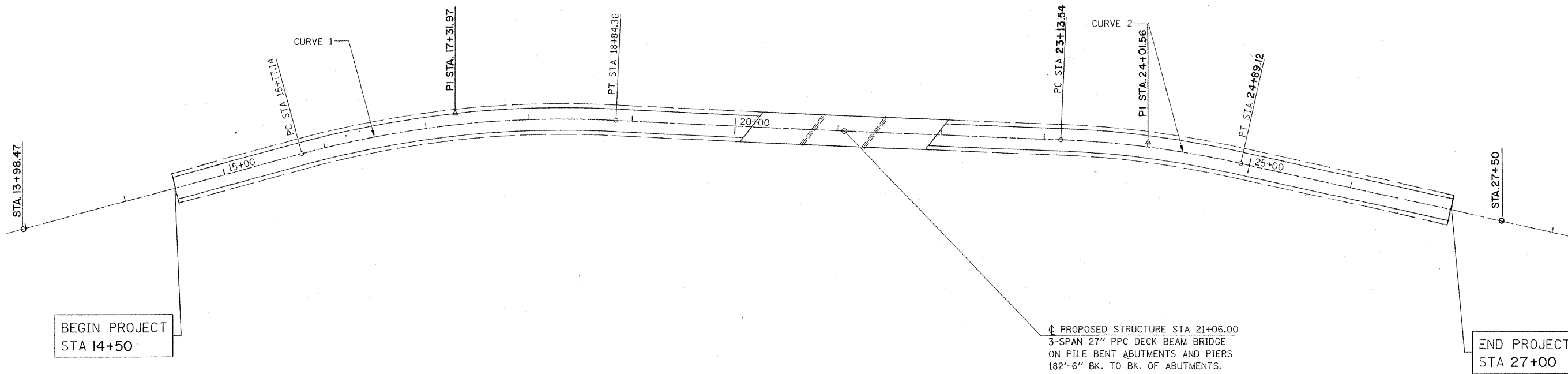
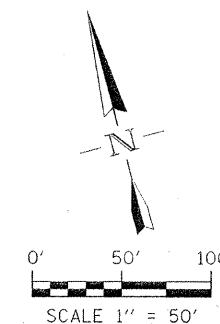
F.A. NO.	SECTION	COUNTY	TOTAL SHEETS	SHEET NO.
653	04-00256-00-BR	SHELBY	40	4
STA. 15+00		TO STA. 26+50		
FED. ROAD DIST. NO.		ILLINOIS	FED. AID PROJECT	
Contract No. 95555				



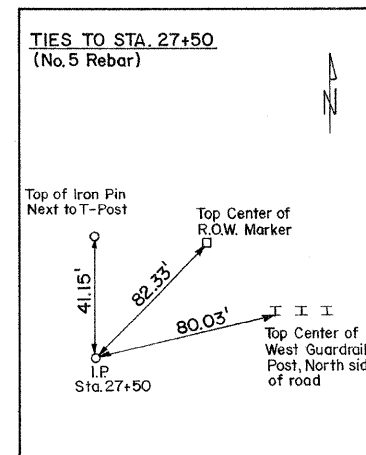
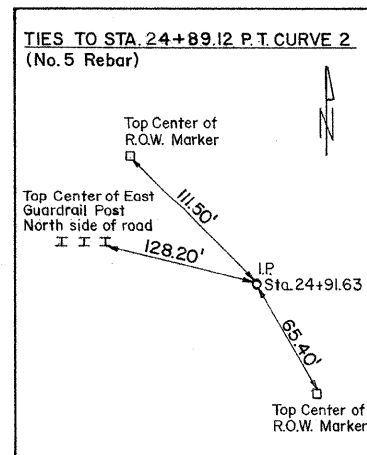
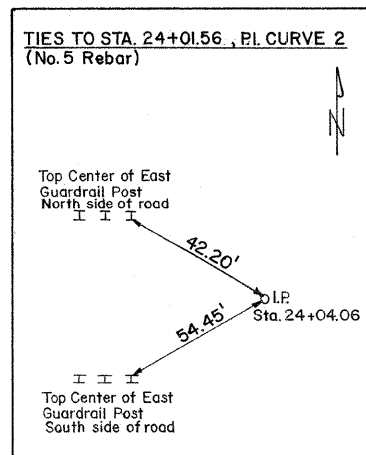
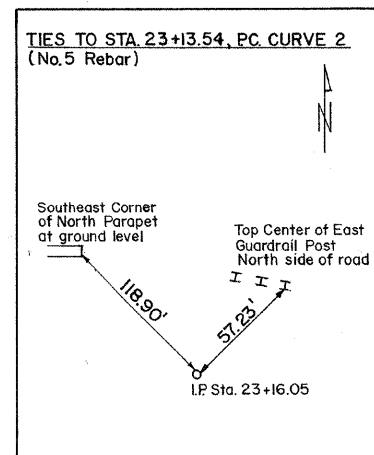
CURVE 1 DATA
 P.I. STA. 17+31.97
 $\Delta = 17^\circ 36' 07''$ (RT)
 $D = 5^\circ 43' 46''$
 $R = 1,000.00'$
 $T = 154.83'$
 $L = 307.21'$
 $E = 11.91'$
 $e = 0.055''$
 $T.R. = 41'$
 $S.E. RUN = 112'$
 P.C. STA. 15+77.14
 P.T. STA. 18+84.36
 S.E. ATTAINED FROM STA. 14+61.47 TO STA. 16+14.47
 S.E. REMOVED FROM STA. 18+47.03 TO STA. 20+00.03



CURVE 2 DATA
 P.I. STA. 24+01.56
 $\Delta = 10^\circ 03' 37''$ (RT)
 $D = 5^\circ 43' 46''$
 $R = 1,000.00'$
 $T = 88.02'$
 $L = 175.58'$
 $E = 3.87'$
 $e = 0.055''$
 $T.R. = 41'$
 $S.E. RUN = 112'$
 P.C. STA. 23+13.54
 P.T. STA. 24+89.12
 S.E. ATTAINED FROM STA. 21+97.87 TO STA. 23+50.87
 S.E. REMOVED FROM STA. 24+51.79 TO STA. 26+04.79



PROPOSED STRUCTURE STA 21+06.00
 3-SPAN 27" PPC DECK BEAM BRIDGE
 ON PILE BENT ABUTMENTS AND PIERS
 182'-6" BK. TO BK. OF ABUTMENTS.
 30'-0" OUT TO OUT



NOTE: ALL TIE POINT MEASUREMENTS ARE SLOPE CHAINED DISTANCES

TIE POINTS and ALIGNMENT

Section 04-00256-00-BR