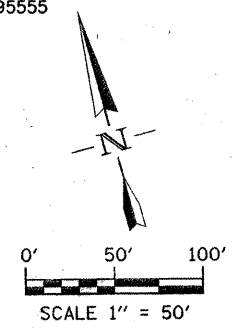


F.A.S.	SECTION	COUNTY	TOTAL SHEETS	SHEET NO.
653	04-00256-00-BR	SHELBY	40	12
STA. 14+50		TO STA. 27+00		
FED. ROAD DIST. NO.	ILLINOIS	FED. AID PROJECT		

Contract No. 95555

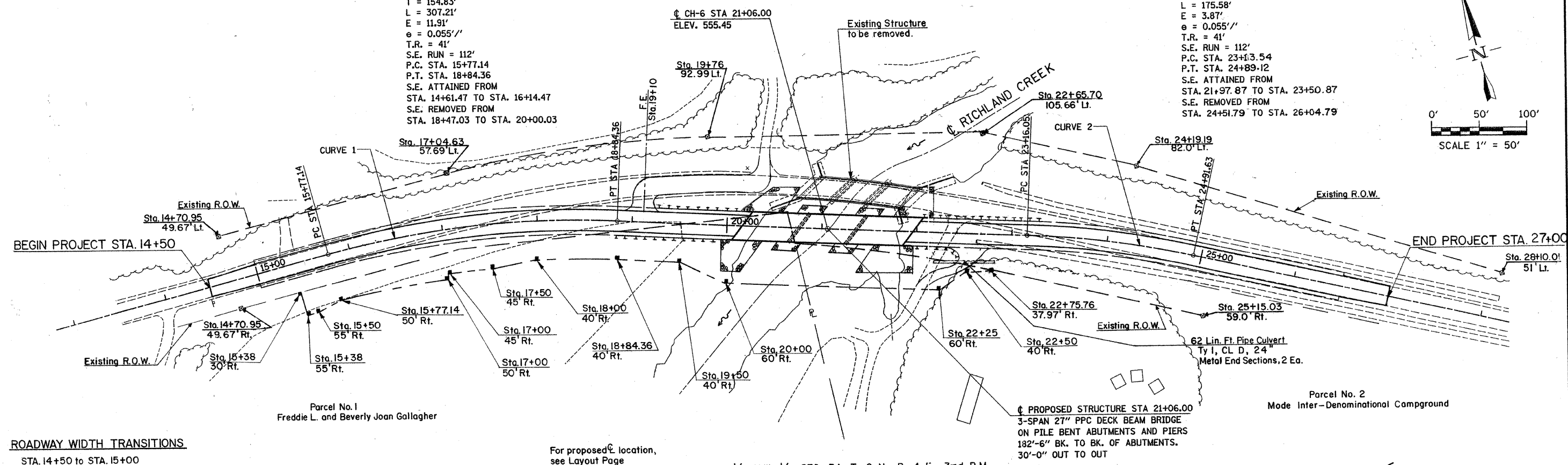


CURVE 1 DATA
 PI STA. 17+31.97
 $\Delta = 17^\circ 36' 07''$ (RT)
 $D = 5^\circ 43' 46''$
 $R = 1,000.00'$
 $T = 154.83'$
 $L = 307.21'$
 $E = 11.91'$
 $e = 0.055'/'$
 $T.R. = 41'$
 $S.E. RUN = 112'$
 $P.C. STA. 15+77.14$
 $P.T. STA. 18+84.36$
 $S.E. ATTAINED FROM STA. 14+61.47$
 $S.E. REMOVED FROM STA. 18+47.03$
 $TO STA. 20+00.03$

CURVE 2 DATA
 PI STA. 24+01.56
 $\Delta = 10^\circ 03' 37''$ (RT)
 $D = 5^\circ 43' 46''$
 $R = 1,000.00'$
 $T = 88.02'$
 $L = 175.58'$
 $E = 3.87'$
 $e = 0.055'/'$
 $T.R. = 41'$
 $S.E. RUN = 112'$
 $P.C. STA. 23+13.54$
 $P.T. STA. 24+89.12$
 $S.E. ATTAINED FROM STA. 21+97.87$
 $S.E. REMOVED FROM STA. 24+51.79$
 $TO STA. 26+04.79$

S.W. 1/4, S.W. 1/4, SEC. 27, T. 10 N., R. 4 E., 3rd P.M.

N.W. 1/4, N.W. 1/4, SEC. 34, T. 9 N., R. 4 E., 3rd P.M.



ROADWAY WIDTH TRANSITIONS

STA. 14+50 to STA. 15+00
 STA. 26+50 to STA. 27+00

For proposed location, see Layout Page Sheet 4 of 40 Sheets

Parcel No. 1
 Freddie L. and Beverly Joan Gallagher

Parcel No. 2
 Mode Inter-Denominational Campground

