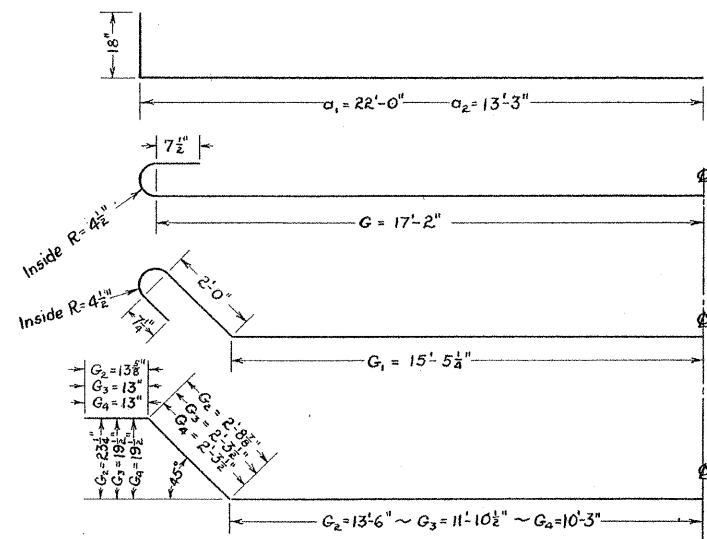
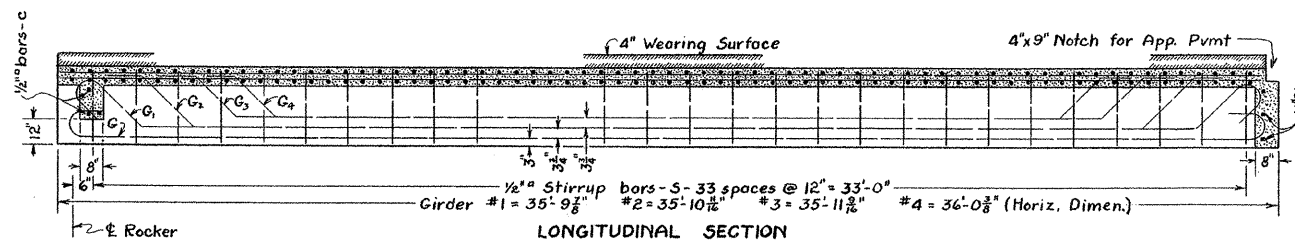
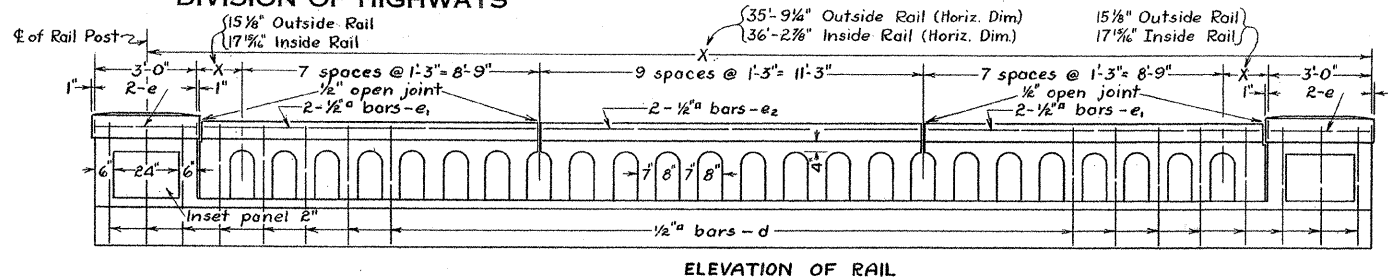


RTE.	SECTION	COUNTY	TOTAL SHEETS	SHEET NO.
FAS 653	*	SHELBY	40	23
PROJECT BRS-0653(112)				

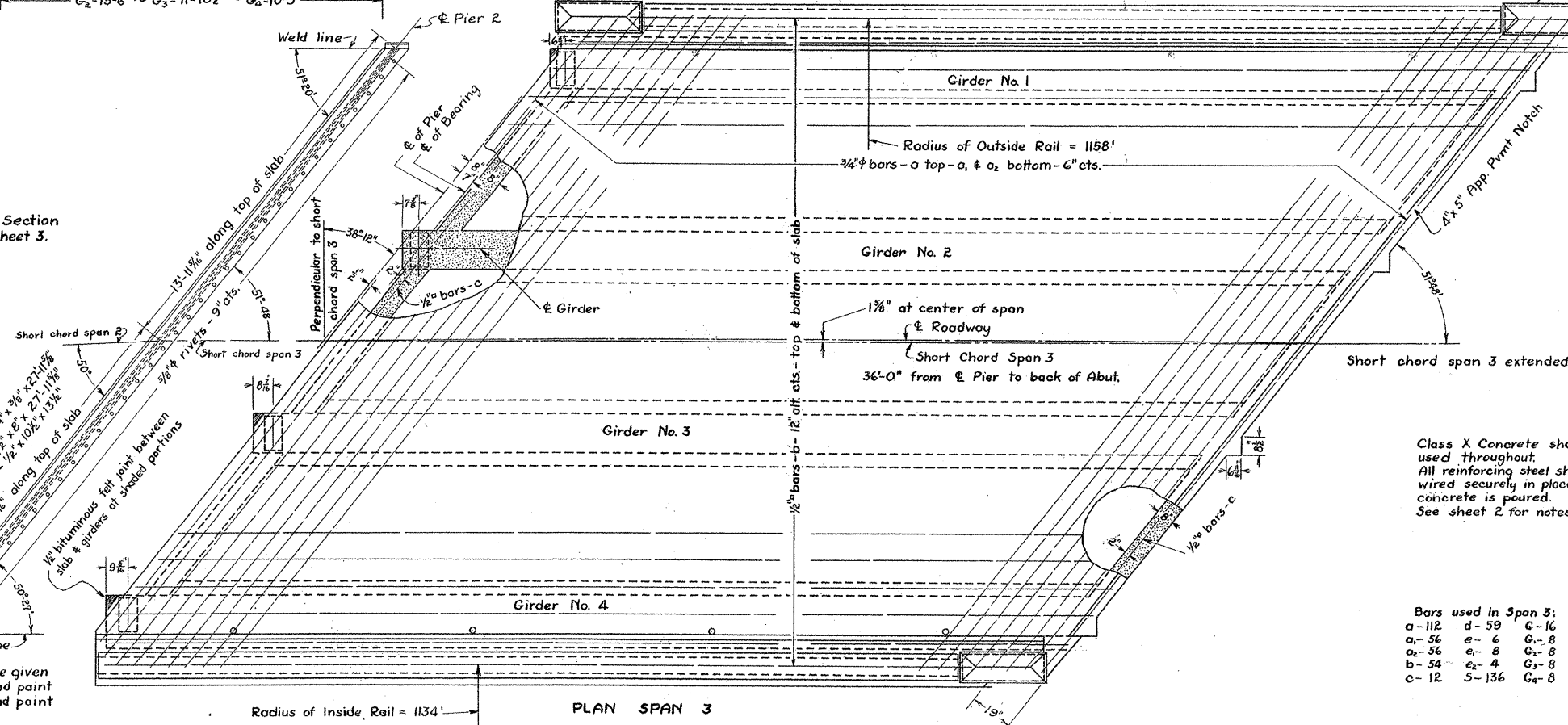
STATE OF ILLINOIS  
DEPARTMENT OF PUBLIC WORKS & BUILDINGS  
DIVISION OF HIGHWAYS

SHEET NO. 4  
7 SHEETS



Elevation & Section  
same as on sheet 3.

Weight of Two  
Exp. Guards.  
= 2140<sup>lb</sup>



Class X Concrete shall be used throughout.  
All reinforcing steel shall be wired securely in place before concrete is poured.  
See sheet 2 for notes.

- Bars used in Span 3:
- a-112    d-59    G-16
  - a<sub>1</sub>-56    e-6    G<sub>1</sub>-8
  - a<sub>2</sub>-56    e<sub>1</sub>-8    G<sub>2</sub>-8
  - b-54    e<sub>2</sub>-4    G<sub>3</sub>-8
  - c-12    S-136    G<sub>4</sub>-8

Expansion guards shall be given one shop coat of blue lead paint & 2 field coats of white lead paint

STANDARD	COMPUTED	<i>M.H.</i>
	CHECKED	<i>J.C. Anderson</i>
	DRAWN	<i>M.H.</i>
	CHECKED	<i>J.C.A.</i>
SPECIAL	ASSEMBLED	<i>[Signature]</i>
	CHECKED	<i>[Signature]</i>

EXAMINED	<i>8-11-34</i>
	<i>[Signature]</i> BRIDGE ENGINEER
PASSED	<i>[Signature]</i> ENGINEER OF DESIGN
APPROVED	<i>[Signature]</i> CHIEF HIGHWAY ENGINEER

RICHLAND CREEK BRIDGE  
S.A. RTE. 6 ~ SEC. 5-1-B-1-M.F.T.  
SHELBY COUNTY  
STA. 554+22

THIS SHEET  
FOR INFORMATION ONLY