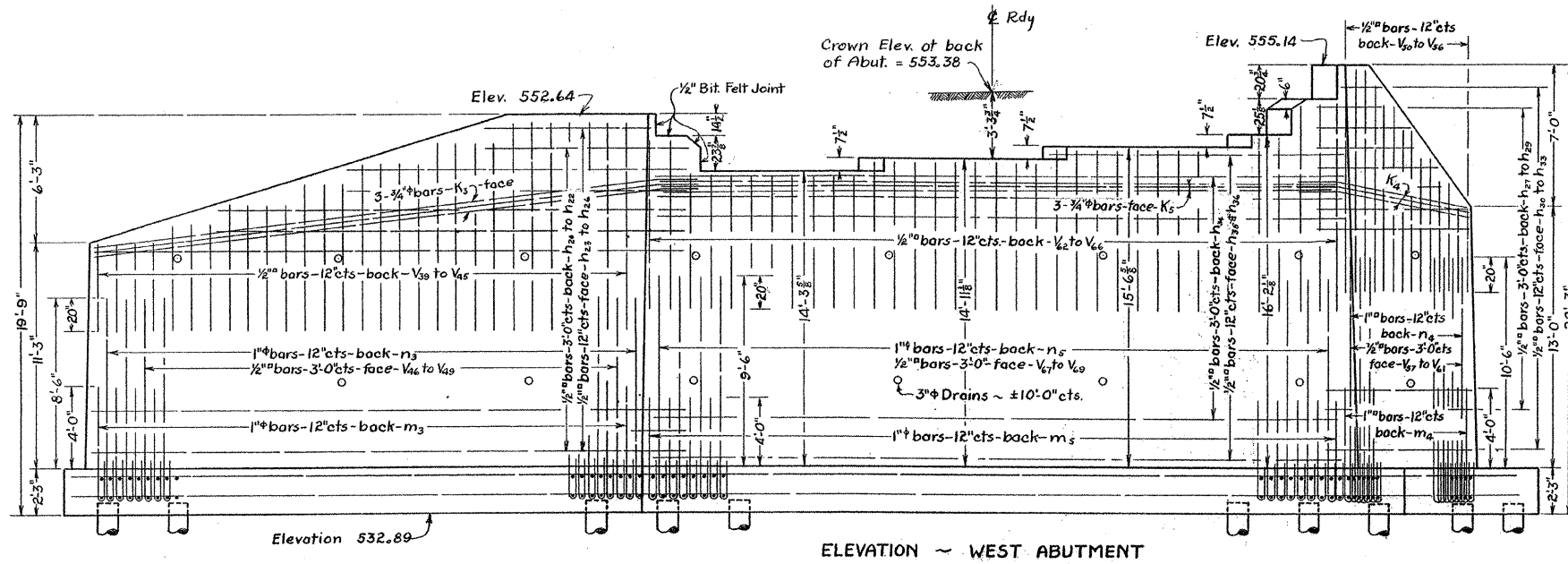


B.M. #44 - Spike in Burr Oak 60 ft. Lt. of Sta. 553+75.
Elevation 548.52

STATE OF ILLINOIS
DEPARTMENT OF PUBLIC WORKS & BUILDINGS
DIVISION OF HIGHWAYS

SHEET NO. 7
7 SHEETS

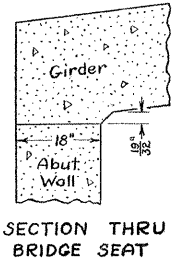
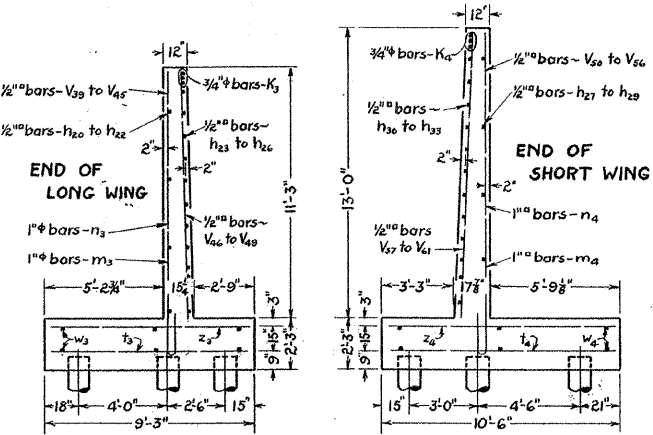
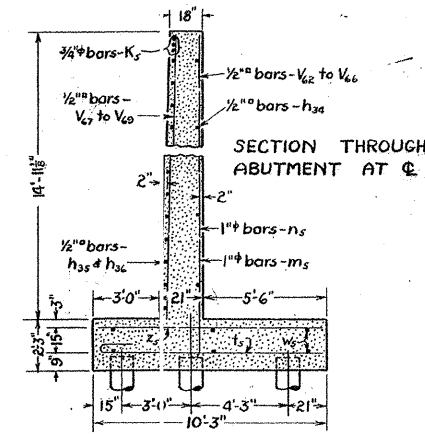
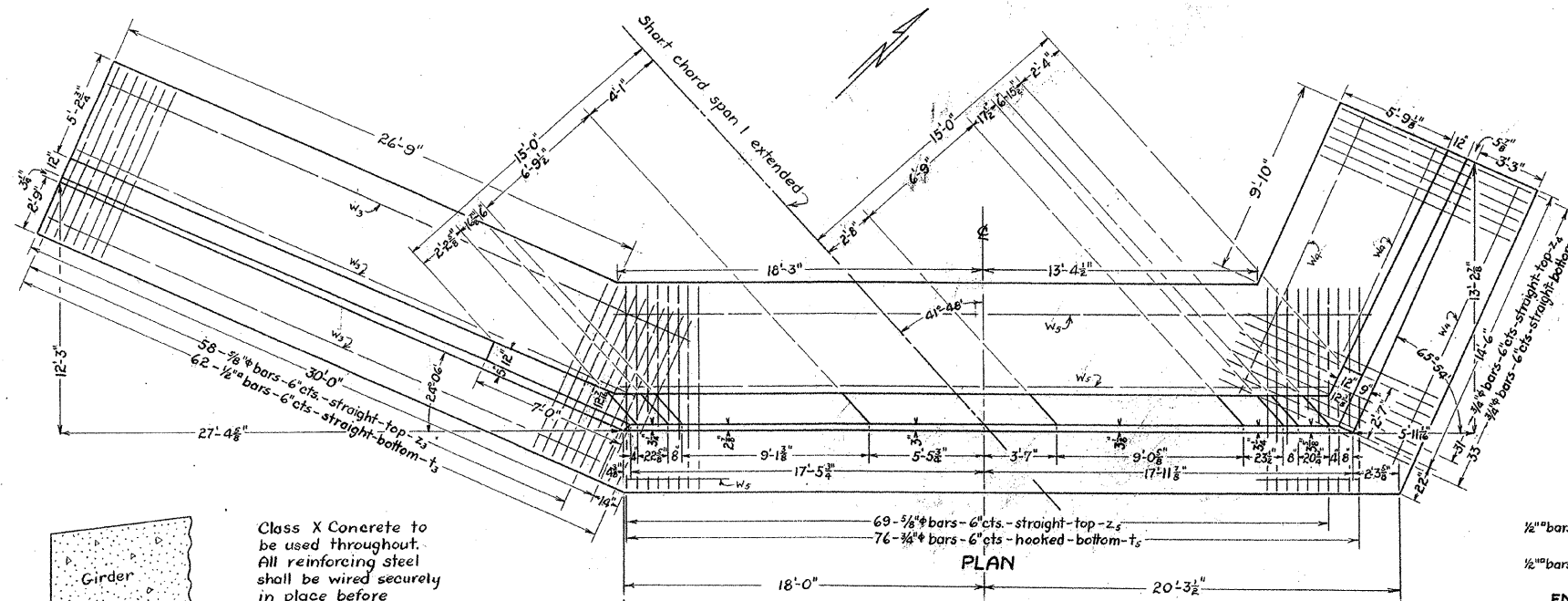
CONTRACT NO. 95555				
RTE.	SECTION	COUNTY	TOTAL SHEETS	SHEET NO.
FAS 653	*	SHELBY	40	26
PROJECT BRS-0653(112)				
*04-00256-00-BR				



BILL OF MATERIAL ~ WEST ABUTMENT

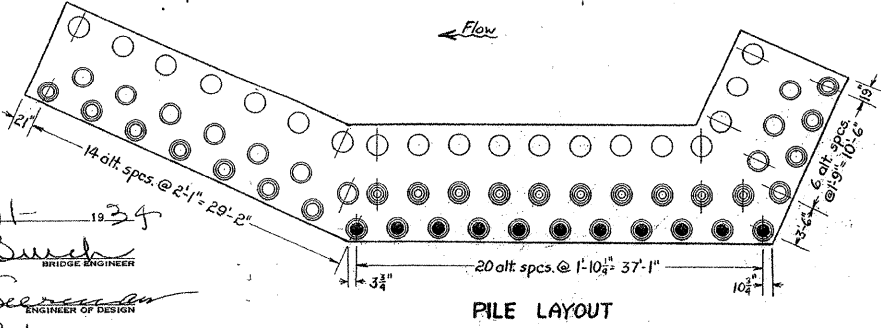
Bar	No	Size	Length	Bar	No	Size	Length
V ₃₉	4	1/2"	4'-6"	h ₂₂	1	1/2"	12'-6"
V ₄₀	3	1/2"	5'-6"	h ₂₃	11	1/2"	31'-6"
V ₄₁	4	1/2"	6'-6"	h ₂₄	2	1/2"	26'-0"
V ₄₂	3	1/2"	7'-6"	h ₂₅	2	1/2"	19'-0"
V ₄₃	4	1/2"	8'-6"	h ₂₆	2	1/2"	11'-6"
V ₄₄	4	1/2"	9'-6"	h ₂₇	4	1/2"	15'-0"
V ₄₅	7	1/2"	10'-6"	h ₂₈	1	1/2"	11'-0"
V ₄₆	2	1/2"	11'-0"	h ₂₉	1	1/2"	7'-0"
V ₄₇	2	1/2"	13'-0"	h ₃₀	13	1/2"	16'-0"
V ₄₈	2	1/2"	15'-0"	h ₃₁	2	1/2"	13'-0"
V ₄₉	3	1/2"	17'-0"	h ₃₂	2	1/2"	9'-6"
V ₅₀	3	1/2"	10'-6"	h ₃₃	2	1/2"	6'-0"
V ₅₁	1	1/2"	9'-9"	h ₃₄	10	1/2"	18'-6"
V ₅₂	2	1/2"	8'-9"	h ₃₅	30	1/2"	18'-6"
V ₅₃	2	1/2"	7'-6"	h ₃₆	1	1/2"	13'-6"
V ₅₄	2	1/2"	6'-3"	m ₃	29	1"	7'-3"
V ₅₅	2	1/2"	5'-0"	m ₄	14	1"	7'-3"
V ₅₆	2	1/2"	4'-0"	m ₅	35	1"	7'-3"
V ₅₇	1	1/2"	9'-0"	n ₃	29	1"	11'-9"
V ₅₈	1	1/2"	8'-0"	n ₄	13	1"	13'-9"
V ₅₉	1	1/2"	6'-6"	n ₅	35	1"	12'-9"
V ₆₀	1	1/2"	5'-0"	k ₃	3	3/4"	32'-0"
V ₆₁	1	1/2"	3'-0"	k ₄	3	3/4"	16'-0"
V ₆₂	2	1/2"	8'-3"	k ₅	6	3/4"	18'-3"
V ₆₃	9	1/2"	6'-3"	t ₂	62	1/2"	9'-0"
V ₆₄	9	1/2"	7'-0"	t ₃	33	3/4"	10'-3"
V ₆₅	12	1/2"	7'-6"	t ₄	76	3/4"	11'-0"
V ₆₆	3	1/2"	10'-3"	z ₃	58	5/8"	9'-0"
V ₆₇	4	1/2"	4'-0"	z ₄	31	3/8"	10'-3"
V ₆₈	3	1/2"	4'-9"	z ₅	69	5/8"	10'-0"
V ₆₉	5	1/2"	5'-3"	w ₃	12	1/2"	16'-6"
h ₂₀	4	1/2"	10'-0"	w ₄	6	1/2"	16'-3"
h ₂₁	1	1/2"	13'-6"	w ₅	12	1/2"	20'-0"

Reinforcing Steel Lbs. 11,390
Class X Concrete Cu.Yds. 127.7
Untreated Piling (u > 20) Lin. Ft. 1,220



STANDARD	COMPUTED	- M.H.
	CHECKED	- J.C. Anderson
	DRAWN	- M.H.
	CHECKED	- J.C.A.
SPECIAL	ASSEMBLED	
	CHECKED	

EXAMINED 8-11-1934
J.F. Burch
PASSED
A.E. Seaman
APPROVED
Ernst Seligman



RICHLAND CREEK BRIDGE
S.A. RTE. 6 ~ SEC. S-1-B-1-M.F.T.
SHELBY COUNTY
STA. 554+22

THIS SHEET FOR INFORMATION ONLY