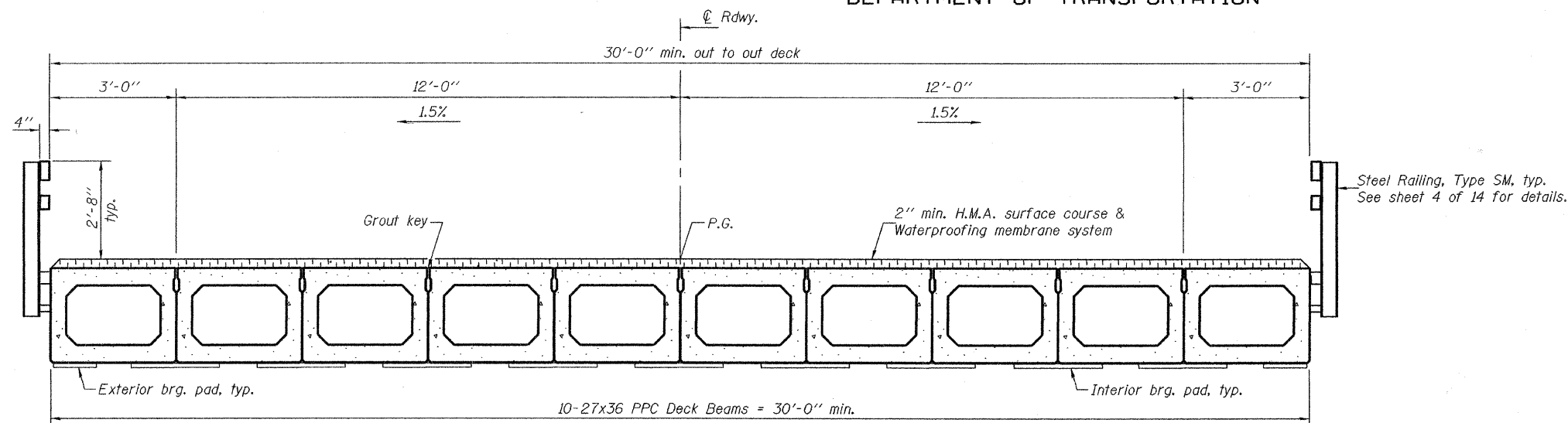


STATE OF ILLINOIS  
DEPARTMENT OF TRANSPORTATION

ROUTE NO.	SECTION	COUNTY	TOTAL SHEETS	SHEET NO.
FAS 653	04-00256-00-BR	SHELBY	40	29
FED. ROAD DIST. NO. 7	ILLINOIS	FED. AID PROJECT		

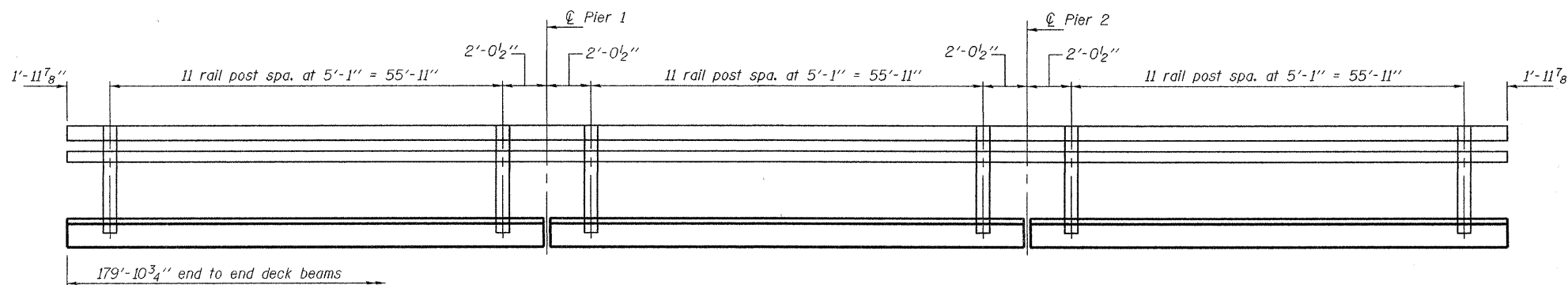
SHEET NO. 3  
14 SHEETS

Contract No. 95555

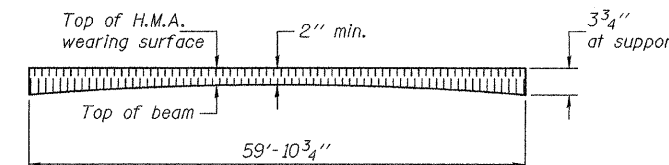


**CROSS SECTION**  
(Looking east)

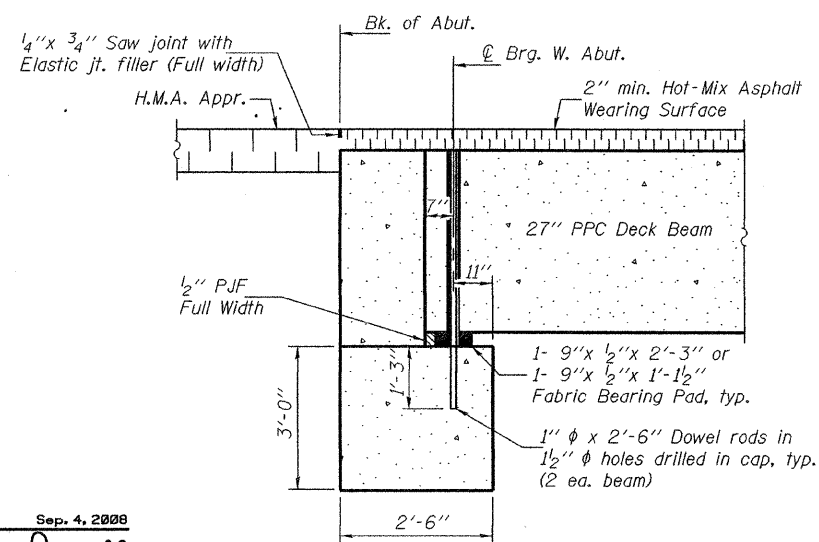
Notes: After beams have been erected, holes shall be drilled into substructure and dowel rods placed. Dowel holes shall be filled with non-shrink grout to top of beam and allowed to cure min. 24 hours prior to grouting the shear keys.  
See sheet 6 of 14 for fabric bearing pad details.  
Dowel rods drilled in cap are included in the cost of Precast Prestressed Concrete Deck Beams (27" Depth).



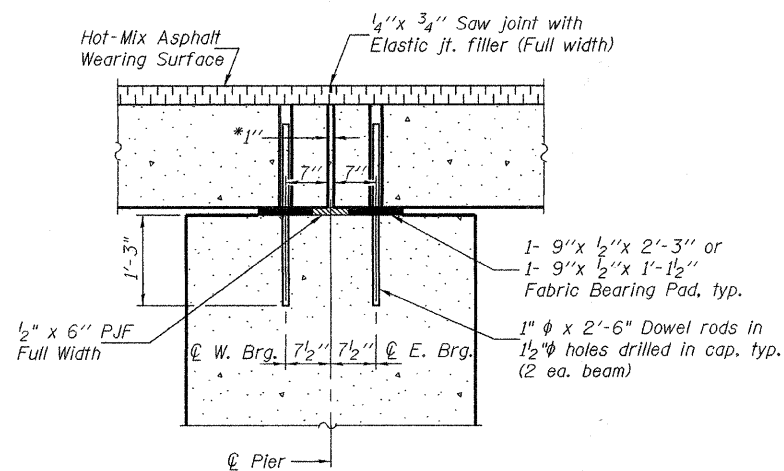
**RAIL POST SPACING**



**HOT-MIX ASPHALT WEARING SURFACE PROFILE**



**SECTION THRU WEST ABUT.**  
(Dimensions measured at Rt. L's)  
(East Abut. similar by rotation)



**TYPICAL PIER SECTION**  
(Looking North)  
(Dimensions measured at Rt. L's)

\*1" joint shall be filled with non-shrink grout.  
1" dimension may vary to accommodate tolerance in beam lengths.

**BILL OF MATERIAL**

Item	Unit	Quantity
Hot-Mix Asphalt Surface Course, Mix "C", N 70	Ton	100

**SUPERSTRUCTURE**  
**F.A.S. RTE. 653 - SEC. 04-00256-00-BR**  
**SHELBY COUNTY**  
**STATION 21+06.00**  
**STRUCTURE NO. 087-3563**

DESIGNED	Jay D. Edwards
CHECKED	Nick R. Barnett
DRAWN	h.t. duong
CHECKED	JDE/NRB/GRA

Sep. 4, 2008  
EXAMINED *Thomas J. Damgalak*  
PASSED *Ralph E. Anderson*  
ENGINEER OF BRIDGE DESIGN  
ENGINEER OF BRIDGES AND STRUCTURES