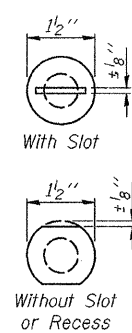
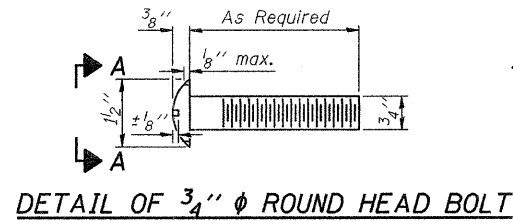


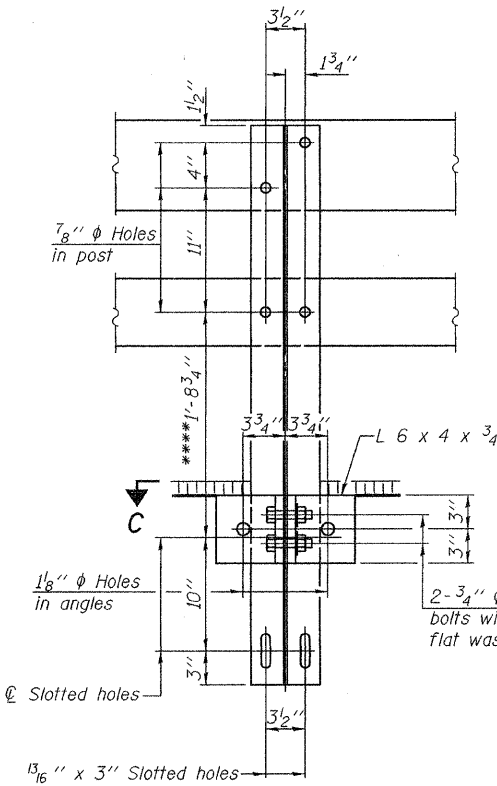
STATE OF ILLINOIS
DEPARTMENT OF TRANSPORTATION

ROUTE NO.	SECTION	COUNTY	TOTAL SHEETS	SHEET NO.	SHEET NO. 4 14 SHEETS
FAS 653	04-00256-00-BR	SHELBY	40	30	
FED. ROAD DIST. NO. 7		ILLINOIS	FED. AID PROJECT		Contract No. 95555

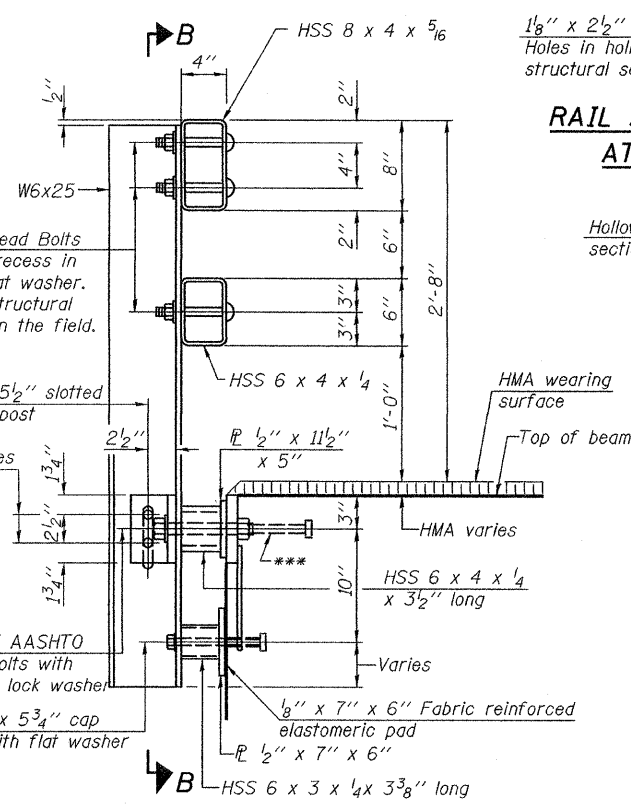


VIEW A-A

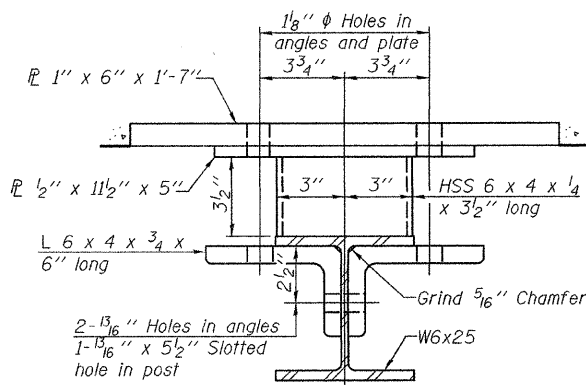
4-3/4" ϕ x 6" Round Head Bolts (With slot or approved recess in head) with locknut & flat washer. 7/8" ϕ holes in hollow structural section may be drilled in the field.



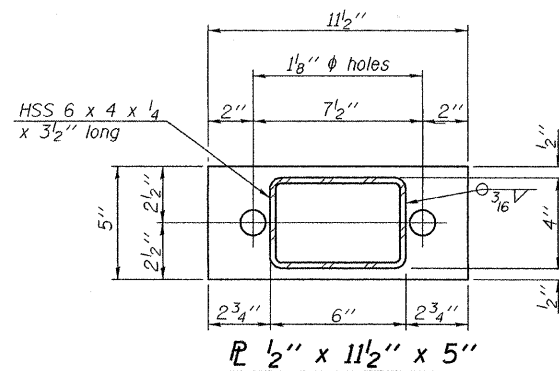
SECTION B-B



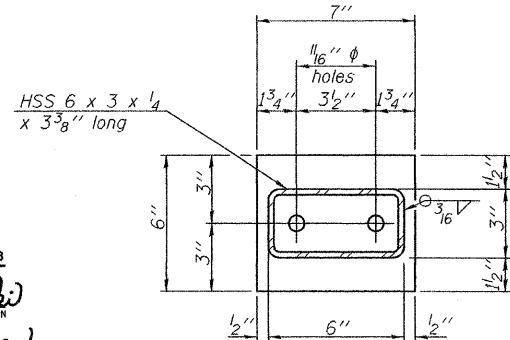
SECTION AT RAIL POST



SECTION C-C

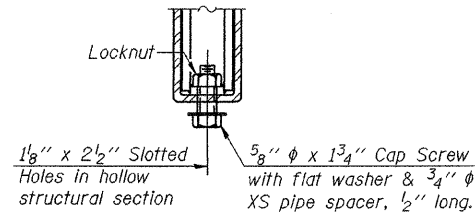


1/2" x 11 1/2" x 5"

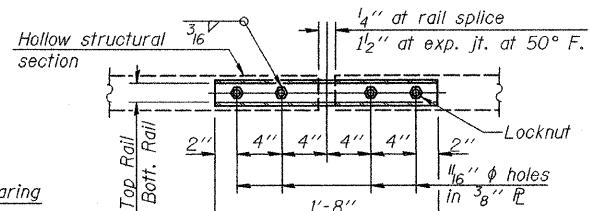


1/2" x 7" x 6"

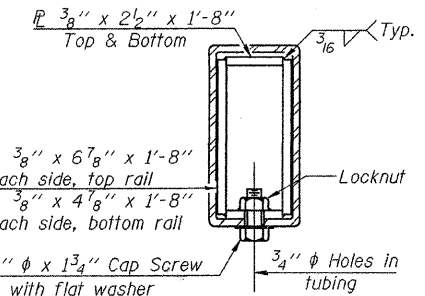
(12" minimum to 37/8" maximum HMA thickness)



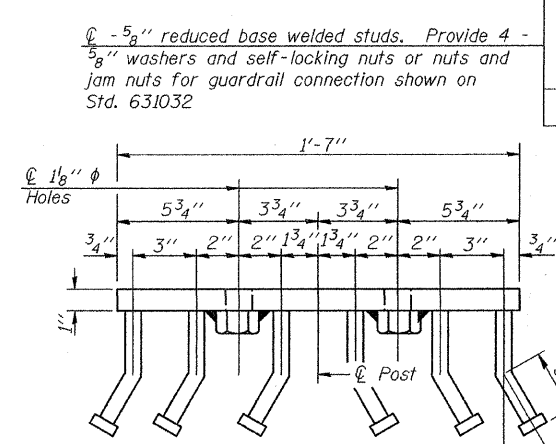
RAIL SPLICE CONNECTION AT EXPANSION JT.



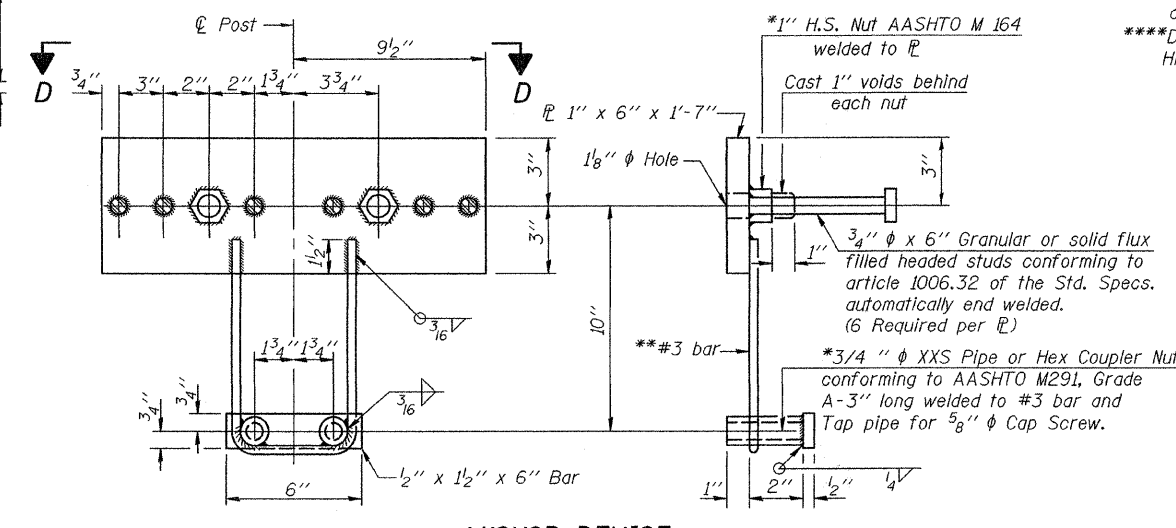
PLAN-BOTTOM. SPLICE R TYPICAL



SECTION AT RAIL SPLICE

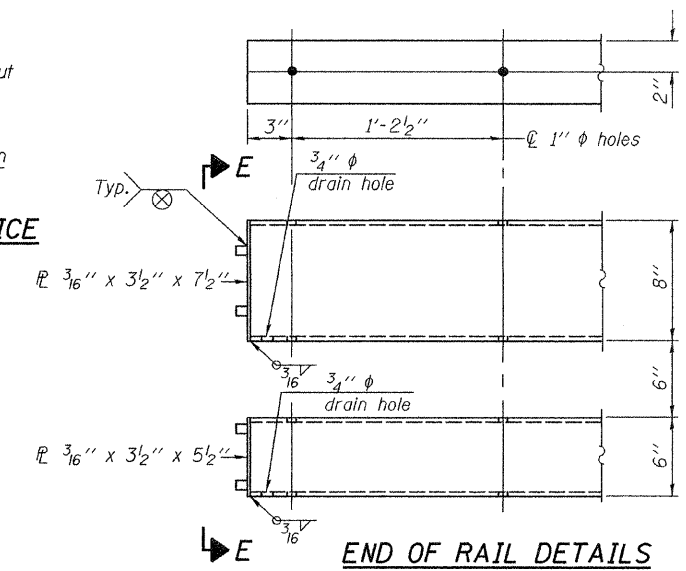


VIEW D-D



ANCHOR DEVICE

*Threaded areas shall be plugged or blocked off during casting of beam. Galvanized after fabrication.



END OF RAIL DETAILS

- Notes:
- All field drilled holes shall be coated with an approved zinc rich paint before erection.
 - For multi-span bridges, sufficient 1/4" x 6" x 1'-2" galvanized steel shims shall be provided to align rail between adjacent spans. Cost included with Steel Railing, Type SM.
 - All steel rail members shall be galvanized according to Article 509.05 of the Standard Specifications.
 - **Whenever the lower insert assemblies interfere with strand locations, the #3 bars shall be cut and adjusted in order to allow raising or lowering of the lower inserts. Maximum adjustment not to exceed 1/2".
 - ***The studs of the anchor devices shall be placed below the top reinforcement bars and the outermost longitudinal reinforcement bar shall be placed directly above the studs of the rail post anchor device.
 - ****Dimension has been revised to accommodate 3 3/4" maximum HMA thickness.

BILL OF MATERIAL

Item	Unit	Quantity
Steel Railing, Type SM	Foot	360

STEEL RAILING, TYPE SM WITH
HOT MIX ASPHALT WEARING SURFACE
F.A.S. RTE. 653 - SEC. 04-00256-00-BR
SHELBY COUNTY
STATION 21+06.00
STRUCTURE NO. 087-3563

DESIGNED	Jay D. Edwards	SEP. 4, 2008
CHECKED	Nick R. Barnett	EXAMINED
DRAWN	h.t. duong	PASSED
CHECKED	JDE/NRB/GRA	