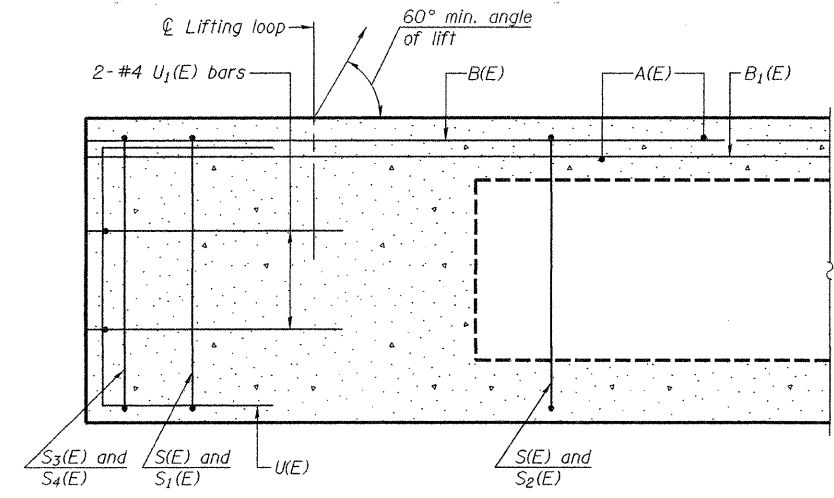


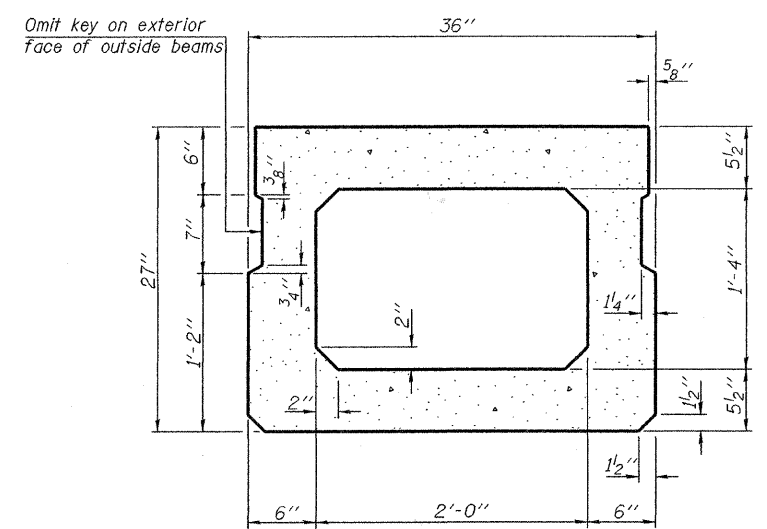
STATE OF ILLINOIS  
DEPARTMENT OF TRANSPORTATION

ROUTE NO.	SECTION	COUNTY	TOTAL SHEETS	SHEET NO.	SHEET NO. 5 14 SHEETS
FAS 653	04-00256-00-BR	SHELBY	40	31	
FED. ROAD DIST. NO. 7		ILLINOIS	FED. AID PROJECT-		

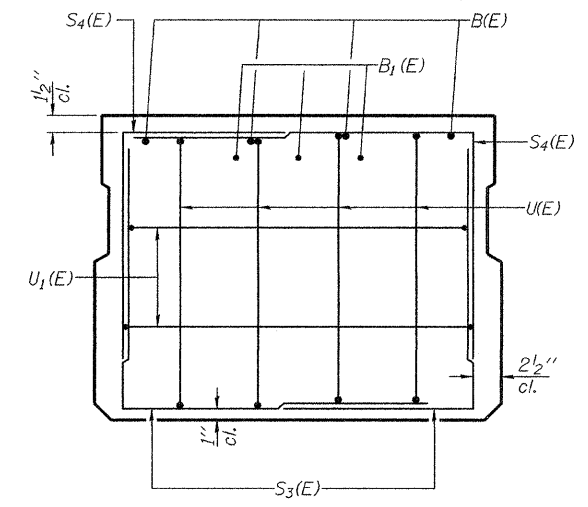
Contract No. 95555



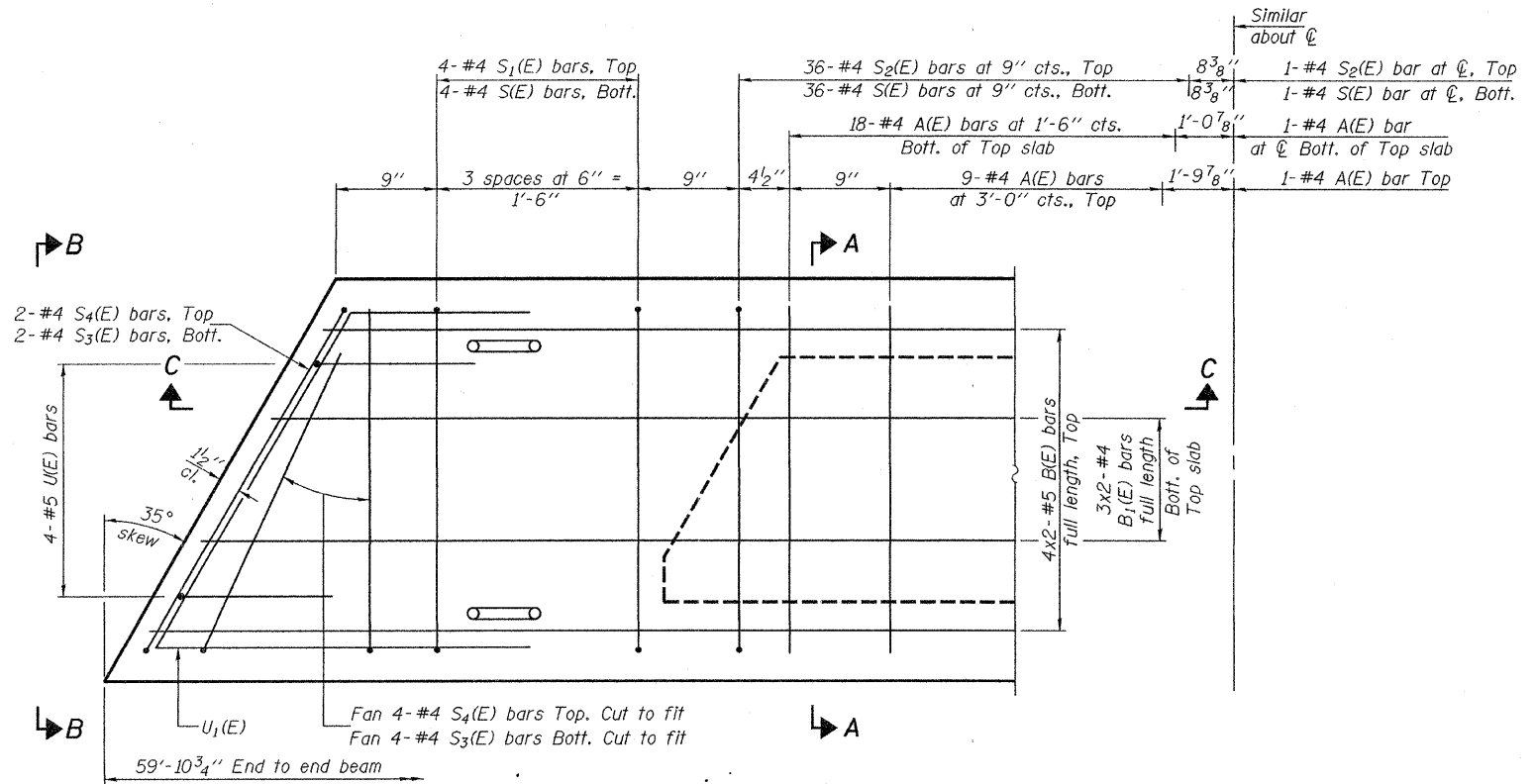
SECTION C-C



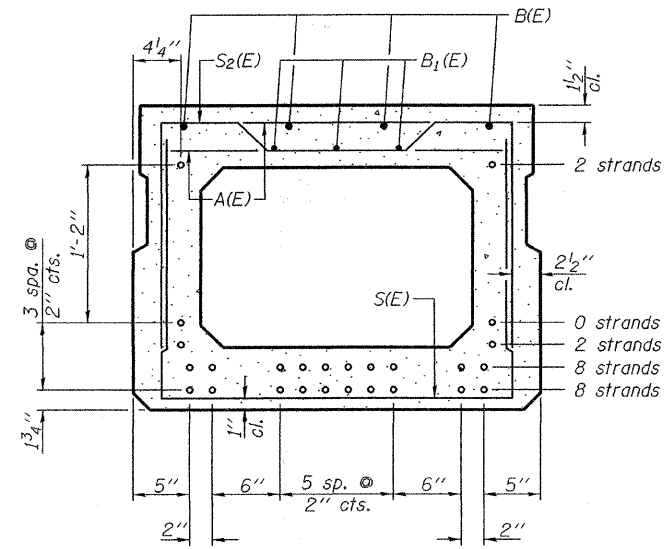
SECTION A-A  
(Showing dimensions)



VIEW B-B



PLAN VIEW



SECTION A-A

(Showing reinforcement and permissible strand locations)  
Note: Place the number of strands specified in each row symmetrically about the centerline of beam in the permissible strand locations shown.

MIN. BAR LAPS  
#4 bar = 1'-8"  
#5 bar = 2'-2"

BAR LIST  
ONE BEAM ONLY  
(For information only)

Bar	No.	Size	Length	Shape
A(E)	56	#4	2'-7"	—
B(E)	8	#5	30'-11"	—
B1(E)	6	#4	30'-11"	—
S(E)	81	#4	6'-5"	⌋
S1(E)	8	#4	5'-11"	⌋
S2(E)	73	#4	6'-2"	⌋
S3(E)	12	#4	4'-6"	⌋
S4(E)	12	#4	4'-3"	⌋
U(E)	8	#5	4'-6"	⌋
U1(E)	4	#4	7'-4"	⌋

Note: See sheet 6 of 14 for additional details and Bill of Material.

Notes: Spacing of S(E) and S2(E) bars may be adjusted up to 4" in the immediate area of the transverse tie diaphragms to miss the block outs for the transverse ties. The top surface of the beams shall be finished according to the IDOT Manual for Fabrication of Precast Prestressed Concrete Products.

DESIGNED	Jay D. Edwards
CHECKED	Nick R. Barnett
DRAWN	h.t. duong
CHECKED	JDE/NRB/GRA

EXAMINED *Thomas J. Damagala*  
ENGINEER OF BRIDGE DESIGN  
PASSED *Ralph E. Anderson*  
ENGINEER OF BRIDGES AND STRUCTURES

Sep. 4, 2008

PD-2736-L 5-16-08

27" x 36" PPC DECK BEAM DETAILS  
F.A.S. RTE. 653 - SEC. 04-00256-00-BR  
SHELBY COUNTY  
STATION 21+06.00  
STRUCTURE NO. 087-3563