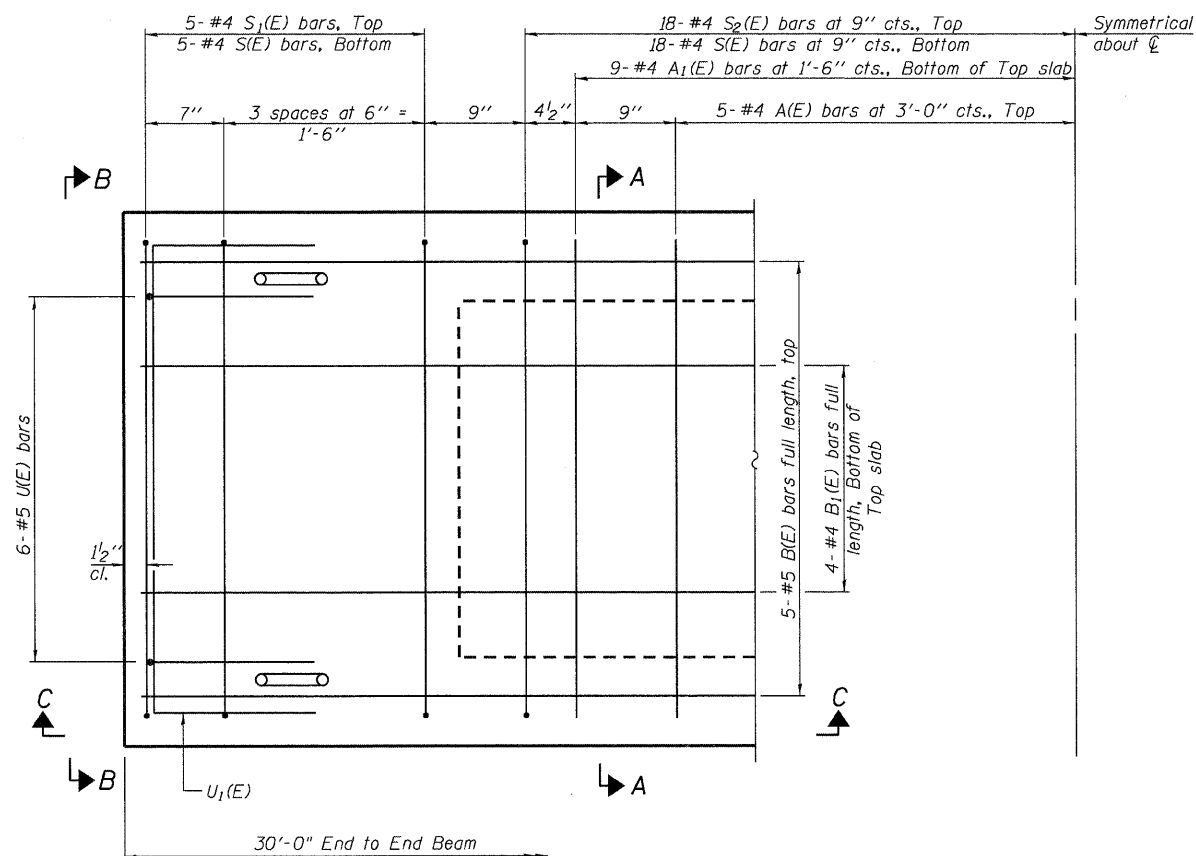
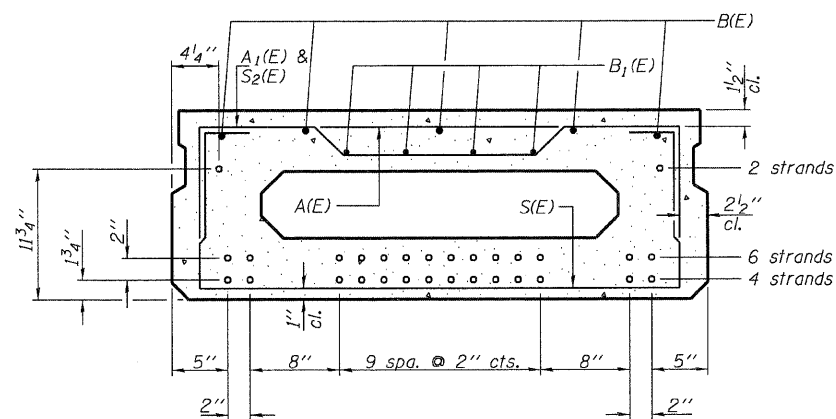


SECTION A-A
(Showing dimensions)



PLAN VIEW

Note: Spacing of S(E) and S2(E) bars may be adjusted up to 4" in the immediate area of the transverse tie diaphragms to miss the block outs for the transverse ties.



SECTION A-A

(Showing reinforcement and permissible strand locations)

Note: Place the number of strands specified in each row symmetrically about the centerline of beam in the permissible strand locations shown.

BAR LIST
ONE BEAM ONLY
(For information only)

Bar	No.	Size	Length	Shape
A(E)	9	#4	3'-7"	—
A1(E)	18	#4	3'-10"	—
B(E)	5	#5	29'-9"	—
B1(E)	4	#4	29'-9"	—
S(E)	46	#4	6'-9"	□
S1(E)	10	#4	5'-3"	□
S2(E)	36	#4	5'-6"	□
U(E)	12	#5	3'-8"	□
U1(E)	2	#4	6'-0"	□

Note: See sheet 3 of 6 for additional details and Bill of Material.

DESIGNED	A.A.N.
CHECKED	T.S.H.
DRAWN	A.J.H.
CHECKED	M.D.C.

PD-1748-0 5-16-08

SUPERSTRUCTURE
CH 3 (KEMPER ROAD)
OVER TRIBUTARY TO MACOUPIN CREEK
SECTION 06-00052-00-BR
JERSEY COUNTY
STA. 10+00
S.N. 042-3147

CUMMINS ENGINEERING CORPORATION

JOB#:	2202
FILE#:	2202beam
DATE:	10/16/2008