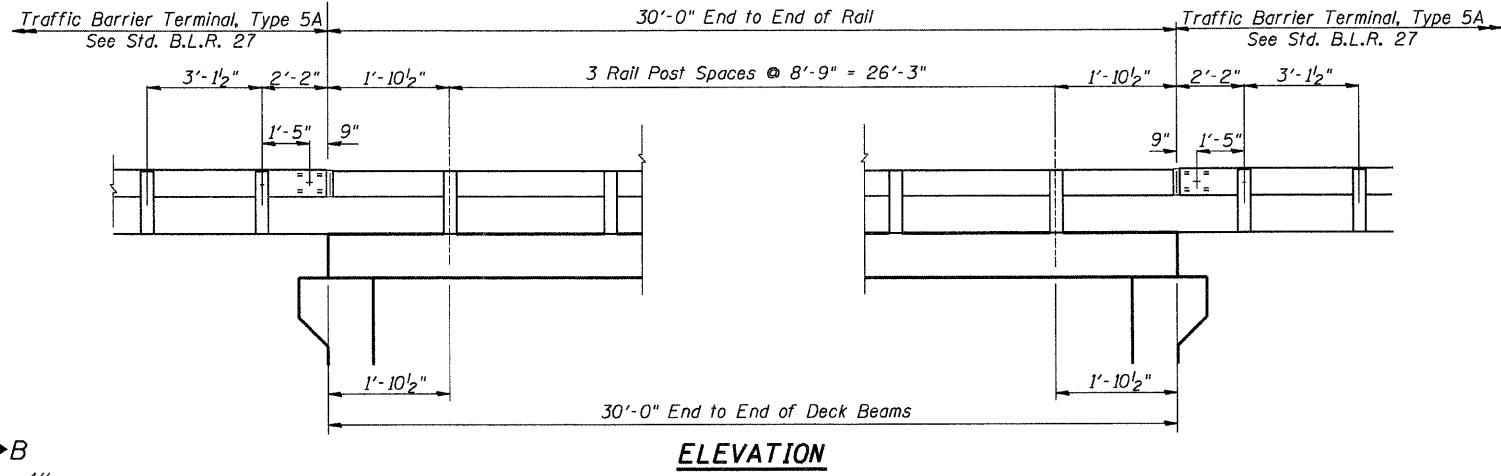
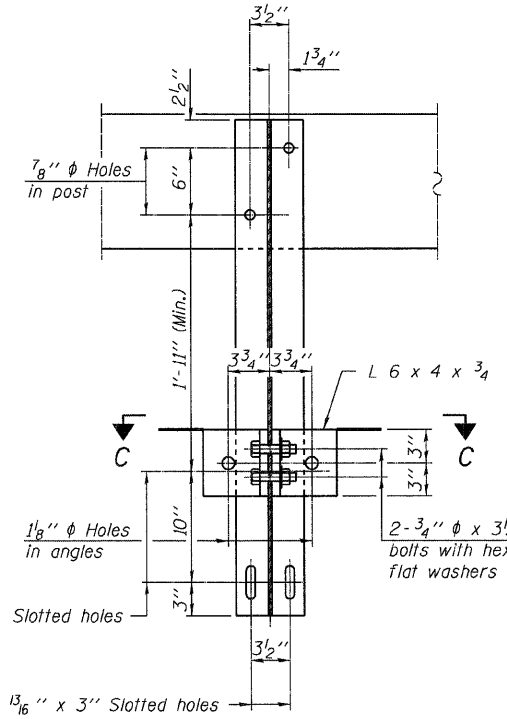


VIEW A-A
ROUND HEAD BOLT

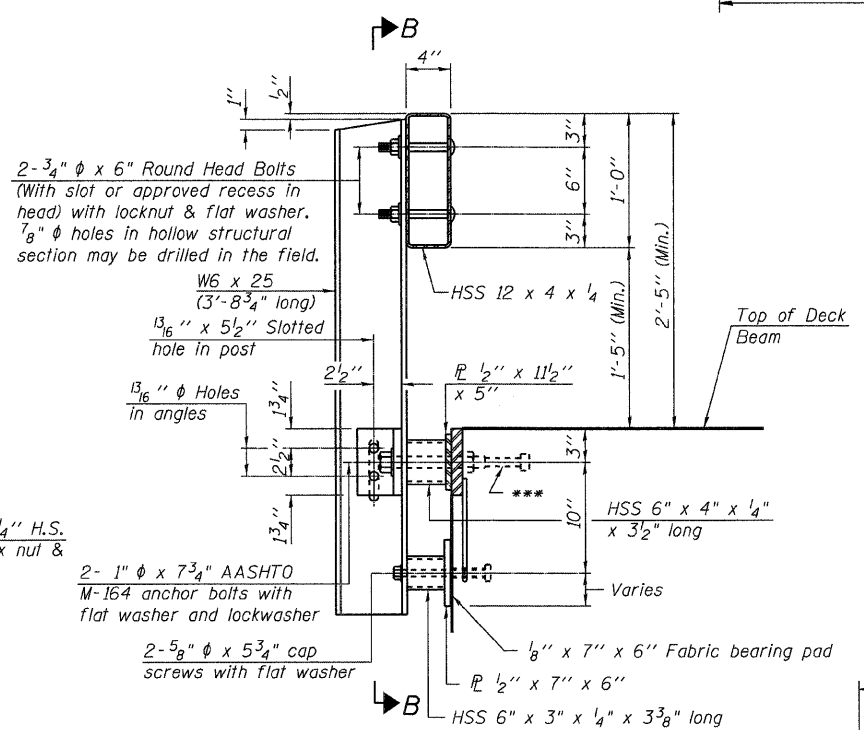


ELEVATION

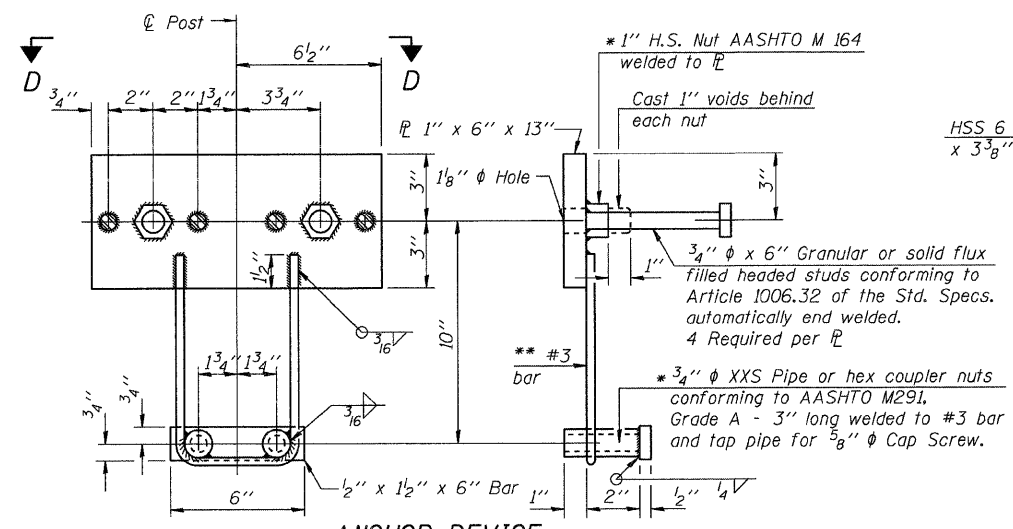
Notes:
 All field drilled holes shall be coated with an approved zinc rich paint before erection.
 For multi-span bridges, sufficient 1/4" x 6" x 1'-2" galvanized steel shims shall be provided to align rail between adjacent spans. Cost included with Steel Railing, Type S1.
 All steel rail elements shall be galvanized according to Article 509.05 of the Standard Specifications.
 *** The studs of the anchor devices shall be placed below the top reinforcement bars and the outermost longitudinal reinforcement bar shall be placed directly above the studs of the rail post anchor device.



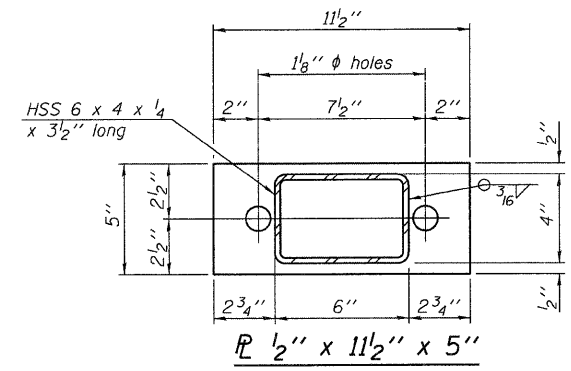
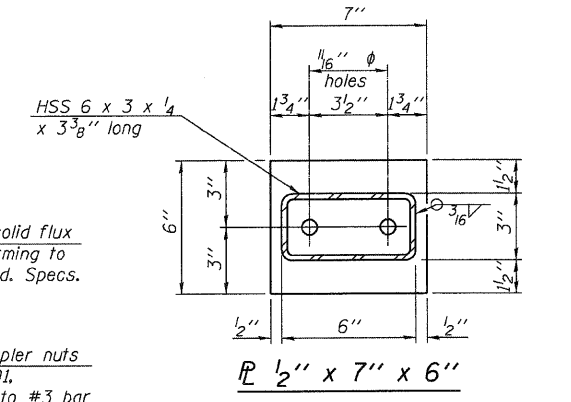
SECTION B-B



SECTION AT RAILING POST

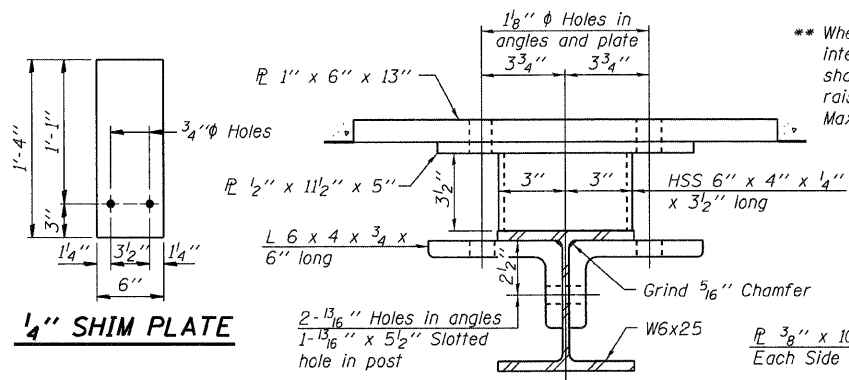


ANCHOR DEVICE

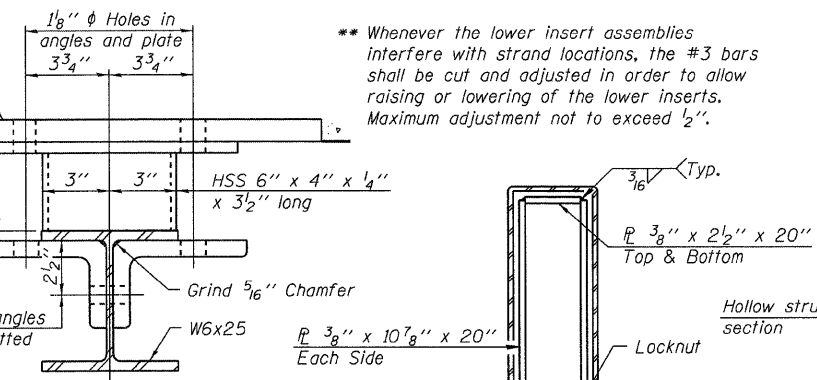


BILL OF MATERIAL

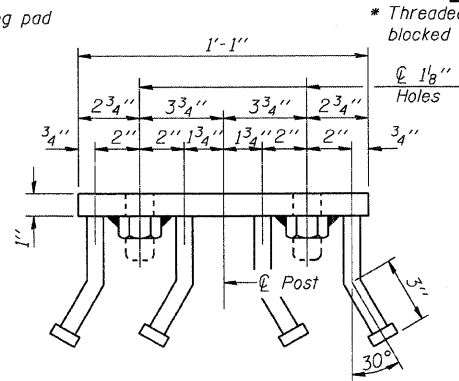
Item	Unit	Quantity
Steel Railing, Type S-1	Foot	60



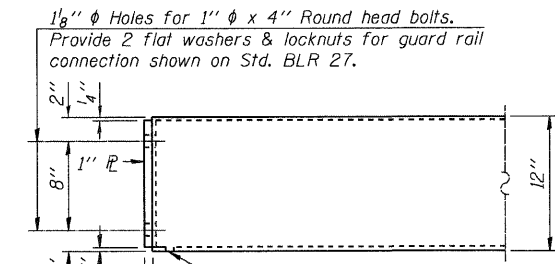
1/4 SHIM PLATE



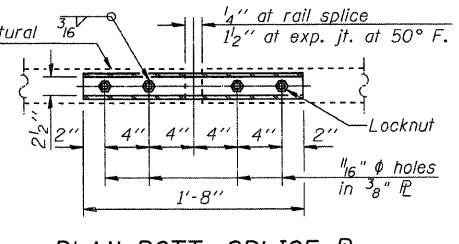
SECTION C-C



VIEW D-D

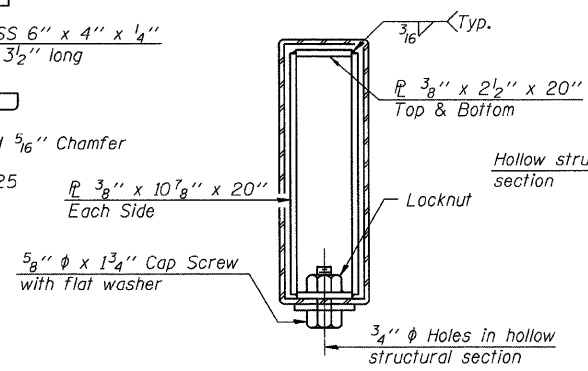


END OF RAIL DETAILS



PLAN-BOTT. SPLICE TYPICAL

** Whenever the lower insert assemblies interfere with strand locations, the #3 bars shall be cut and adjusted in order to allow raising or lowering of the lower inserts. Maximum adjustment not to exceed 1/2 inch.



SECTIONS AT RAIL SPLICE

DESIGNED	A.A.N.
CHECKED	T.S.H.
DRAWN	A.J.H.
CHECKED	M.D.C.

STEEL RAILING, TYPE S1
 CH 3 (KEMPER ROAD)
 OVER TRIBUTARY TO MACOUPIN CREEK
 SECTION 06-00052-00-BR
 JERSEY COUNTY
 STA. 10+00
 S.N. 042-3147

CUMMINS ENGINEERING CORPORATION
 JOB# 2202
 FILE# 2202-calls1
 DATE: 9/30/2008