

# ASBESTOS SURVEY REPORT

**PTB 196-032**

**Asbestos Survey for Building Demolition (I-80)**

**518 Joliet Street, Joliet, Illinois**

**Region One/District One**

*Prepared for:*



**Illinois Department of Transportation  
District 1**

*Submitted to:*

**WSP USA  
30 N. LaSalle Street  
Chicago, IL, 60602**

*Prepared by:*



January 2, 2026



January 2, 2026

David Skaleski, P.E.  
Project Manager  
WSP USA  
30 N. LaSalle Street, Suite 4200  
Chicago, Illinois 60602


Asbestos Survey Report  
PTB 198-003  
FAI-80 (I-80) over Des Plaines River Bridge  
Job N. D-91-204-19  
518 Joliet Street, Joliet, IL  
Parcel No. 1P10160


---


Dear Mr. Skaleski:

GSG Consultants, Inc. (GSG) has conducted an Asbestos Survey for the above referenced property in accordance with our contractual agreement. The report provides a description of the site, survey methodology, analytical results, abatement cost estimates, and recommendations.

Should you have any questions or require additional information, please call us at 630-994-2600.

Prepared by:	<u></u>	<u>January 2, 2026</u>
	Erin Pahomi	Date
	Asbestos Building Inspector	
	Inspector License No: 100-20674	

Reviewed By:	<u></u>	<u>January 2, 2026</u>
	Kyle Boyd, CIH, CHMM	Date
	Director of Industrial Hygiene	

QA Manager:	<u></u>	<u>January 2, 2026</u>
	Ala E Sassila, Ph.D., PE	Date

---

## TABLE OF CONTENTS

---

<b>1.0</b>	<b>INTRODUCTION .....</b>	<b>4</b>
<b>2.0</b>	<b>SURVEY METHODOLOGY .....</b>	<b>5</b>
2.1	VISUAL INSPECTION .....	5
2.2	SAMPLING PROCEDURES .....	5
2.3	QUANTIFICATION.....	6
<b>3.0</b>	<b>ANALYTICAL RESULTS.....</b>	<b>7</b>
3.1	TESTING PROCEDURES .....	7
3.2	FINDINGS.....	7
<b>4.0</b>	<b>RECOMMENDATIONS.....</b>	<b>8</b>
<b>5.0</b>	<b>LIMITATIONS .....</b>	<b>10</b>
<b>6.0</b>	<b>CERTIFICATION .....</b>	<b>11</b>

## TABLES

---

<b>Table 1</b>	<b>Materials Sampled for ACM.....</b>	<b>2</b>
----------------	---------------------------------------	----------

## EXHIBITS

---

<b>Figure 1</b>	<b>Asbestos Bulk Sampling Locations</b>
<b>Figure 2</b>	<b>Asbestos-Containing Material Locations</b>

## APPENDICES

---

<b>Appendix A</b>	<b>Analytical Testing Results</b>
<b>Appendix B</b>	<b>Reference Photographs</b>
<b>Appendix C</b>	<b>Inspector Licenses and Training Certificates</b>
<b>Appendix D</b>	<b>Laboratory Accreditations</b>

---

**ACRONYMS AND ABBREVIATIONS**

---

<b>ACM</b>	<b>Asbestos-Containing Material</b>
<b>ACBM</b>	<b>Asbestos-Containing Building Material</b>
<b>CFR</b>	<b>Code of Federal Regulations</b>
<b>COC</b>	<b>Chain of Custody</b>
<b>GSG</b>	<b>GSG Consultants, Inc.</b>
<b>IDOT</b>	<b>Illinois Department of Transportation</b>
<b>IDPH</b>	<b>Illinois Department of Public Health</b>
<b>NESHAP</b>	<b>National Emissions Standards for Hazardous Air Pollutant</b>
<b>NVLAP</b>	<b>National Voluntary Laboratory Accreditation Program</b>
<b>OSHA</b>	<b>Occupational Safety and Health Administration</b>
<b>PLM</b>	<b>Polarized Light Microscopy</b>
<b>RACM</b>	<b>Regulated Asbestos-Containing Material</b>
<b>TSI</b>	<b>Thermal System Insulation</b>
<b>USEPA</b>	<b>United States Environmental Protection Agency</b>



## SURVEY SUMMARY

SITE INFORMATION			
FAP Route:	FAI-80 (I-80)	Address:	518 Joliet Street
County:	Will	City, State, Zip	Joliet, IL 60433
Section:	N/A	Property Type:	Single-Family Residential
IDOT Job No.	D-91-204-19	Construction Date:	N/A
Parcel No.	1P10160	Building Size:	912 SF

ASBESTOS CONTAINING MATERIALS	
Survey Date:	December 16 <sup>th</sup> 2025
Weather Conditions:	40°F, Cloudy
By Whom: Firm: Inspector: IDPH License No.	GSG Consultants, Inc Erin Pahomi 100-20674
Results:	Number of Material Types Sampled <u>8</u>  Collected Number of Samples: <u>24</u>  Number of Materials Tested Positive: <u>1</u>  Was Friable ACM Found? <u>No</u>  Were Roofing Materials Sampled? <u>Yes</u>  Are There Unique State or Local Requirements? <u>No</u>
Laboratory Used:	Name: Stat Analysis Corporation (Sterling Labs) Address: 2242 W. Harrison Street, Chicago, Illinois NVLAP: 101202-0
Building Access Limitations:	None

**ASBESTOS-CONTAINING MATERIAL (ACM) SURVEY RESULTS:**

**Parcel No. 1P10160  
Residential Property  
518 Joliet Street, Joliet, Illinois**

**Table 1** provides a list of the homogeneous building material types that were sampled as part of the asbestos survey and the laboratory testing results.

HA No.	Material Description	Location	Type <sup>(1)</sup>	Condition	Friable	% Asbestos*	# of Samples	Estimated Quantity <sup>(2)</sup>
1	Drywall System (Drywall, Tape, & Compound)	Throughout	Misc.	Good	No	Asbestos Not Detected	3	N/A
2	12"x12" Brown Floor Tile	Kitchen	Misc.	Good	No	Asbestos Not Detected	3	N/A
3	Stone pattern Linoleum	Bathroom, Entry	Misc.	Good	No	Asbestos Not Detected	3	N/A
4	CMU Mortar	Basement	Misc.	Good	No	Asbestos Not Detected	3	N/A
5	<b>Transite Siding</b>	<b>Exterior</b>	<b>Misc.</b>	<b>Good</b>	<b>No</b>	<b>Chrysotile (10-15%)</b>	<b>3</b>	<b>1,200 SF</b>
6	Black Vapor Barrier	Exterior (Under Transite Siding)	Misc.	Good	No	Asbestos Not Detected	3	N/A
7	Window Caulking	Exterior windows	Misc.	Good	No	Asbestos Not Detected	3	N/A
8	Roofing Material (3 Layers)	Roof	Misc.	Good	No	Asbestos Not Detected	3	N/A
Total Estimated Quantity of ACM								1,200 SF

(1) TSI= Thermal System Insulation, Surf. = Surfacing Material, and Misc. = Miscellaneous.

(2) Quantities are estimates only, all quantities must be field verified.

## 1.0 INTRODUCTION

---

GSG Consultants Inc. (GSG) conducted an Asbestos Survey at Parcel No. 1P10160 located at 518 Joliet Street in Joliet, Illinois. The site is improved with a one-story, single-family house that is approximately 912 square feet in size and includes an attic and an unfinished basement. The interior walls and ceilings are drywall, and the floors are wood, floor tile, and linoleum tile. The building exterior is of masonry and transite siding over a black vapor barrier construction with an asphaltic shingled roof.

GSG conducted the asbestos survey to satisfy requirements of the United States Environmental Protection Agency (USEPA) regulations under 40 CFR Part 61, Subpart M of the National Emission Standards for Hazardous Air Pollutants (NESHAP) and applicable state and local regulations. This was accomplished by conducting a visual inspection of the structures to be impacted by the planned demolition and collecting samples of suspect Asbestos-Containing Material (ACM) based on these observations.

The results, findings, conclusions, and recommendations expressed in this report are based on conditions observed during GSG's survey of the project area. The information contained in this report represents conditions at the time of the survey and may not accurately represent conditions at a later date. The conclusions in this report are based on conditions observed in accessible areas of the project area. The possibility exists that suspect hazardous building materials or conditions may exist within wall cavities, voids, or other areas hidden from view which were not observed and cannot be ruled out. Any additional potential hazardous building materials encountered that will be disturbed during the demolition activities and that differ from the materials assessed during this survey, were hidden from view, or were located in an area not accessible will require further sampling and analysis prior to disturbance. The estimated quantities provided herein should be considered approximate and are accurate to the extent allowable under the terms and conditions of our contract. This report has been prepared with generally accepted industry practices and procedures. No other warranty, either expressed or implied, is made.

The investigation did not include access or inspection of confined spaces, underground piping, conduits, and building footings, if any. Materials associated with electrical components and energized equipment were not safely accessible and were not sampled.

## 2.0 SURVEY METHODOLOGY

---

The asbestos survey was conducted in compliance with the United States Environmental Protection Agency (USEPA) National Emissions Standards for Hazardous Air Pollutants (NESHAPs), applicable state of Illinois and local asbestos regulations. NESHAP regulations defined Regulated Asbestos-Containing Material (RACM) as a friable asbestos material, a Category I non-friable ACM that has become friable, a Category I non-friable ACM that will be or has been subjected to sanding, grinding, cutting or abrading, or Category II non-friable ACM that has a high probability of becoming or has become crumbled, pulverized, or reduced to powder by the forces acting on it during demolition or renovation. The materials were then classified with regard to whether they are friable or non-friable and classified as Class I or Class II non-friable materials, using the following definitions.

- **Friable:** NESHAP defines a friable ACM as any material containing more than one percent (1%) asbestos, which, when dry, may be crumbled, pulverized, or reduced to powder by hand pressure, and includes previously non-friable material where previously non-friable material becomes damaged to the extent that it may be crumbled, pulverized, or reduced to powder by hand pressure.
- **Category I Non-friable ACM:** NESHAP defines a Category I non-friable ACM as packing, gaskets, resilient floor covering (except vinyl sheet flooring products that are considered friable), and asphalt roofing products that contain more than one (1) percent asbestos as determined using the method specified in **Appendix A**, Subpart F, 40 CFR Part 763, Section 1, Polarized Light Microscopy (PLM).
- **Category II Non-friable ACM:** means any material, excluding Category I non-friable ACM, containing more than 1 percent asbestos as determined using the methods specified in **Appendix A**, Subpart F, 40 CFR Part 763, Section 1, PLM that, when dry, cannot be crumbled, pulverized, or reduced to powder by hand pressure.

The survey consisted of three major activities: visual inspection, sampling, and quantification of building materials. A brief description of each of the above elements is provided in the following sections.

### 2.1 Visual Inspection

The inspector conducted an initial building walkthrough to determine the presence and condition of suspect ACM that were accessible and/or exposed. The survey consisted of accessible areas of the buildings to identify and quantify suspect ACM. The inspector identified Homogeneous Areas (HA) comprised of building materials that appear similar throughout in terms of color and texture and assumed date of installation. Materials that were similar in general appearance were grouped into homogeneous sampling areas. Following the EPA inspection protocol, each identified suspect homogeneous material was placed in one of the following EPA classifications:

1. Surfacing Materials (spray or trowel applied to building members)
2. Thermal System Insulation (materials generally applied to various mechanical systems)
3. Miscellaneous Materials (any materials which do not fit either of the above categories)

### 2.2 Sampling procedures

The asbestos inspector collected a representative number of samples from each HA. Building materials identified

**2.0 Survey Methodology****518 Joliet Street, Joliet, IL**

as concrete (not including cement panels or pipe and soft concrete), glass (including fiberglass), wood, masonry, metal, and plastic are not considered suspect ACM and were not sampled. The survey included destructive, intrusive, and/or exploratory testing unless specifically prohibited by IDOT. Destructive sampling is performed to identify materials that are concealed or obstructed. Concealed or obstructed areas include but are not limited to wall cavities, pipe chases, spaces above fixed ceilings, materials located under carpeting or subfloors, and ceramic tile grout/adhesive. Bulk samples of suspect ACM were collected in general accordance with NESHAP sampling protocols, based on the results of the visual observation. Representative samples of suspect materials were collected of each HA.

A total of twenty-four (24) bulk samples of suspect ACM, three (3) samples for each of the eight (8) homogeneous areas, were collected from various homogeneous areas of the building. Bulk samples were collected from the following materials/homogeneous area(s):

- Drywall System (Tape, Compound, Drywall)
- 12"x12" Brown Floor Tile
- Stone Pattern Linoleum
- CMU Mortar
- Transite Siding
- Black Vapor Barrier
- Window Caulk
- Roofing Material (3 Layers)

**Exhibit 1, Suspect ACM Sample Locations**, shows the approximate locations of the suspect ACM collected during the field survey. Samples were placed in new sealable containers and labeled with unique sample numbers using an indelible marker. All non-disposable sampling equipment was wet-wiped and cleaned before and after each use. Bulk material samples were collected in 4-milliliter plastic bags and tightly sealed for transport to the laboratory. Bulk samples were submitted under a strict chain-of-custody (COC) protocol to Stat Analysis Corporation (Sterling Labs) in Chicago, Illinois.

**2.3 Quantification**

The inspector estimated the quantities of accessible and/or exposed materials that were suspected of containing asbestos using a measuring wheel and/or visual estimation. Actual quantities may differ between visually estimated values and physical measurements. The asbestos abatement contractor is responsible for verifying reported quantities of ACM.

## 3.0 ANALYTICAL RESULTS

---

### 3.1 Testing Procedures

Stat Analysis Corporation (Sterling Labs) analyzed the bulk samples using PLM method with dispersion staining techniques per USEPA methodology “Method for the Determination of Asbestos in Bulk Building Materials, EPA/600/R-93/116, July 1993”. This is a standard method of analysis in optical mineralogy and the currently accepted method for the determination of asbestos in bulk samples. A suspect material is immersed in a solution of known refractive index and subjected to illumination by polarized light. The characteristic color displays which enable mineral identification. It should be noted that some ACM may not be accurately identified and/or quantified by PLM. The percentage of asbestos applicable was determined by microscopic visual estimation. Stat Analysis Corporation (Sterling Labs) analyzed each layer of each sample individually, which means if multiple layers are detected in the same sample (i.e., roof field), each layer was analyzed, and a separate result was provided for each layer. If any of the sample results from a homogeneous group had a positive result, that homogeneous group was considered to be ACM. Stat Analysis Corporation (Sterling Labs) is accredited under the National Voluntary Laboratory Accreditation Program (NVLAP Accreditation Number 101202-0). Refer to **Appendix D** for laboratory accreditations.

It should be noted that some ACMs might not be accurately identified and/or quantified by PLM. As an example, the original fabrication of vinyl floor tiles routinely involved milling of asbestos fibers to extremely small sizes. As a result, these fibers may go undetected under the standard PLM methods. Transmission Electron Microscopy (TEM) is required for a more definitive analysis of these materials. This survey revealed the presence of floor tiles with less than 1% asbestos via PLM analysis. GSG recommends additional analysis by TEM as described above and recommended by the Illinois Department of Public Health.

### 3.2 Findings

GSG identified a total of eight (8) HAs from which twenty-four (24) samples were collected and analyzed. Results are summarized in **Table 1** and include a description of each material, location, material type, test results, and estimated quantity. Materials indicated to have a “negative” result were confirmed by PLM analysis to be non-asbestos-containing. The laboratory results are provided in **Appendix A** and reference photographs are included in **Appendix B**. The USEPA defines ACM as a material containing greater than 1% asbestos. Materials containing less than 1% asbestos are not regulated by the USEPA or the State of Illinois, but their disturbance is regulated by OSHA.

The following **HA was confirmed** to be ACM:

- Transite Siding (HA-5)

The laboratory reported that asbestos was Not Detected (ND) in the remaining bulk samples collected by GSG. **Exhibit 2, ACM Locations**, shows the approximate locations of ACM present in the building.

## 4.0 RECOMMENDATIONS

---

GSG understands that the residential property will be demolished as part of the I-80 improvement project. ACM identified at the site must be removed and managed in accordance with all federal, state, and local regulations governing asbestos. ACM abatement and management are subject to the US EPA, the Occupational and Health Administration (OSHA), Illinois Department of Public Health (IDPH), the Illinois Environmental Protection Agency (Illinois EPA), and other applicable federal, state, and local government regulations. The following regulations governing asbestos removal and disposal:

1. U.S. Environmental Protection Agency Regional National Emissions Standards for Hazardous Air Pollutants (NESHAP) (40 CFR Part 61 Subpart A and M).
2. U.S. Department of Transportation "Hazardous Substances Final Rule" 49 CFR 171 and 172, November 21, 1986, February 17, 1987.
3. U.S. Department of Labor Occupational Safety and Health Administration (OSHA) Asbestos Regulations (Code of Federal Regulations Title 29, Part 1910, Section 1910.1001 and Part 1926, Section 1926.1101).
4. State of Illinois, Commercial and Public Building Asbestos Abatement Act. Illinois Department of Public Health, Rules for Asbestos Abatement for Public and Private Schools and Commercial and Public Buildings in Illinois (77 IL Admin. Code 855).

All friable asbestos-containing building materials (ACBMs) identified shall be removed from any building(s) or other structures before demolition. Non-friable ACM may be left in place, unless during demolition, the ACM may become friable. If other suspect materials not referenced in this survey report, within or on the outside of the buildings, are identified, not listed in **Table 1**, such materials shall be assumed ACM until the materials are inspected by a licensed asbestos inspector, sampled, and submitted for laboratory analysis.

GSG recommends the preparation of an asbestos abatement project design before any demolition. An asbestos abatement design plan and specifications should include information regarding the location of containments and barriers, type of sealant, and air sampling requirements and clearance during the asbestos abatement activities. The asbestos design plan and specifications shall be prepared and signed by an IDPH licensed asbestos project designer following Illinois regulations. Before starting any abatement activities, an asbestos abatement notification is required for all asbestos projects and must be applied for at least ten (10) working days before the start of the project. A building demolition notification is required for all demolition projects and must be applied for at least ten (10) working days before the start of the project.

Abatement and emergency response shall be conducted only by IDPH licensed asbestos abatement contractor(s) under the supervision of a licensed asbestos project manager in accordance with all applicable federal, state, and local regulations. Workers who abate or manage asbestos must receive the proper training and licensing. OSHA prescribes required personnel monitoring including air monitoring and medical monitoring (ref 29 CFR 1926.1101). Personnel protective equipment and procedures are also required.

All asbestos waste generated from the required pre-demolition removal activities during the project must utilize consistent wet methods before it is double bagged in 6-millimeter plastic bags and enclosed in a plastic, leak-tight container with a lid and proper labeling. No visible emissions to the outside air during the collection, processing, packaging, or transporting of any asbestos-containing waste material. Asbestos waste is a "special waste" in

Illinois. Asbestos-containing waste can only be disposed of in Subtitle D landfills that are designated to receive asbestos waste.

## 5.0 LIMITATIONS

---

This report has been prepared for the exclusive use of the Illinois Department of Transportation (IDOT) and its Design Section Engineer consultant. GSG warrants that the investigations and methodology reflect our best efforts based upon the prevailing standard of care in the environmental field. This assessment was limited to those materials which were readily accessible and visible with limited demolition of building components. Additional suspect materials may be located behind walls and ceilings. The survey is subject to the following limitations.

- The investigation did not include sampling on any system which may present a hazard to the inspection team such as energized electrical systems or within confined spaces
- Estimated quantities of the ACM are based on observations during the field survey and additional materials may be concealed or were not accessible. Therefore, all estimated quantities shall be field verified by the abatement contractor.

## 6.0 CERTIFICATION

---

The undersigned hereby affirm that the conditions described herein are accurate to the best of our knowledge and belief and are subject to the limitations inherent in the investigative techniques used and any expressed limitations of this survey. Applicable licensing to perform the survey activities described was valid at the time of performance of services in accordance with applicable federal, state and local laws, rules, and regulations.

Inspection Performed By:

Erin Pahomi

Asbestos Inspector's Name

100-20674

IDPH License Number



Asbestos Inspector's Signature

December 26, 2025

Date

## EXHIBITS

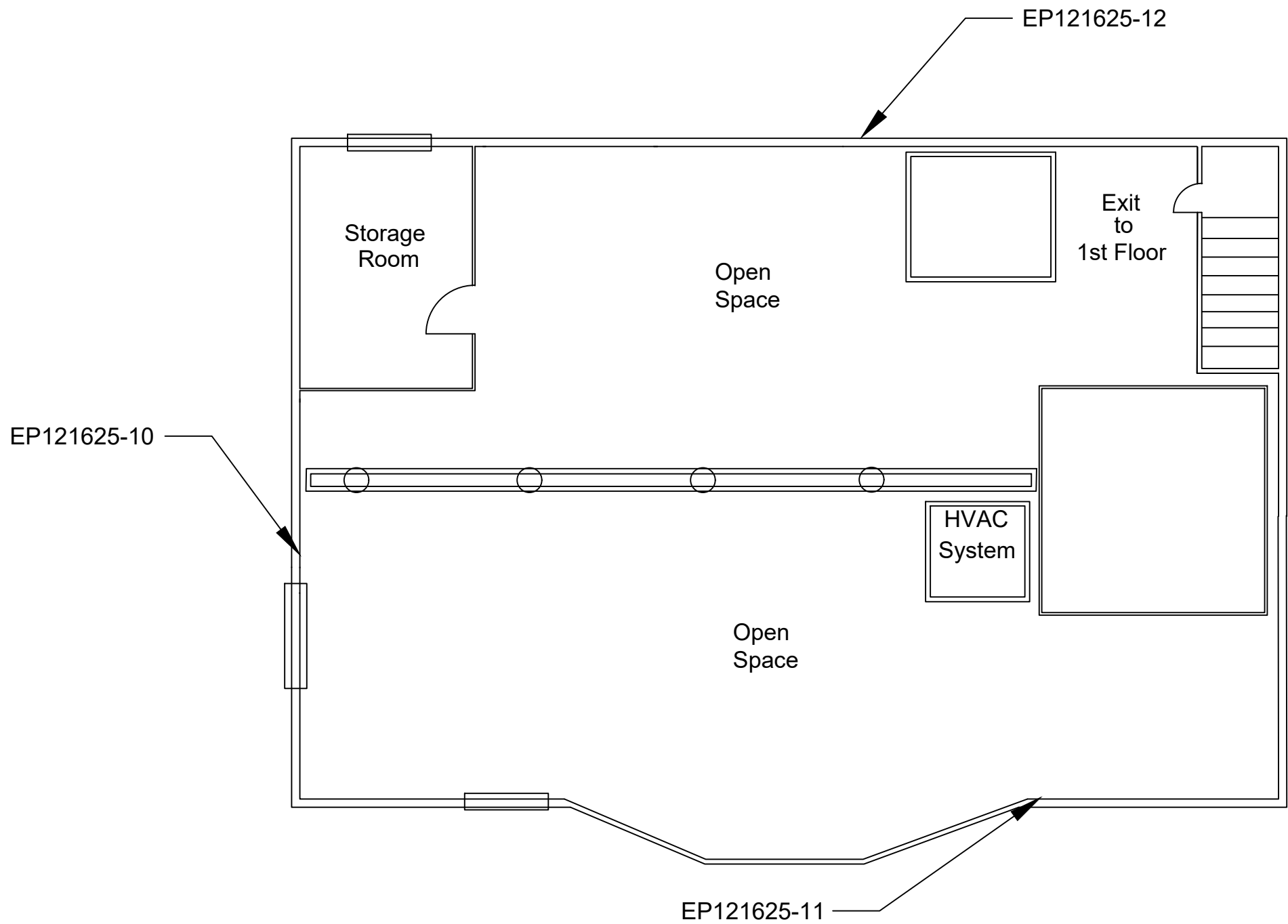
---

<b>Exhibit 1</b>	<b>Suspect ACM Sample Location Plans</b>
<b>Exhibit 2</b>	<b>Asbestos-Containing Material Location Plan</b>

## EXHIBIT 1

---

### SL-1, SL-2, SL-3 Suspect ACM Sample Location Plans



BASEMENT  
SCALE = N.T.S.



LEGEND

SUSPECT ACM SAMPLE LOCATIONS: EP121625-XX  
BATCH NUMBER: 377079

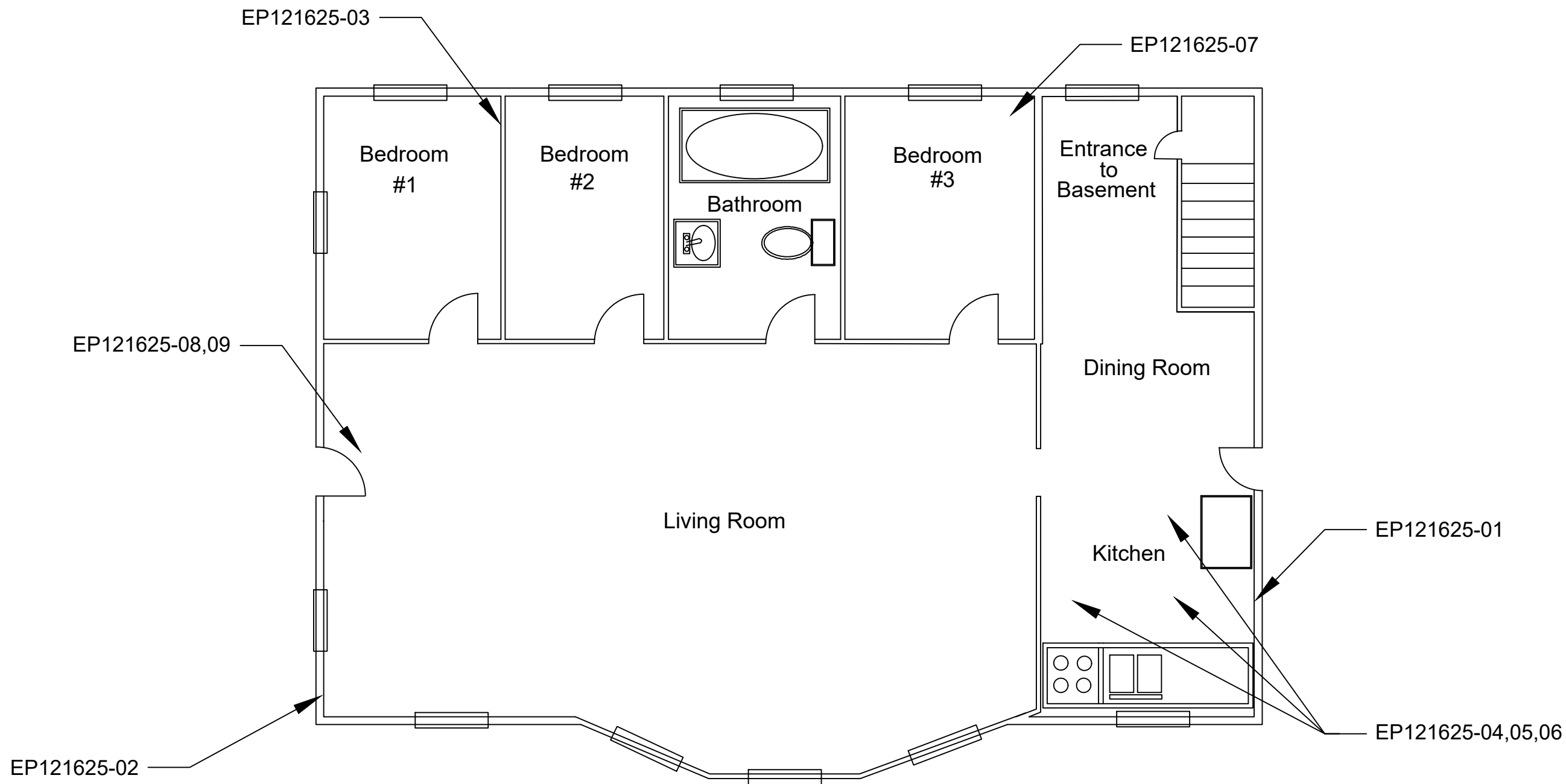
SUSPECT ASBESTOS-CONTAINING MATERIALS SAMPLE LOCATION PLAN

ASBESTOS SURVEY FOR BUILDING DEMOLITION (I-80)  
518 JOLIET STREET  
JOLIET, IL, 60433

**GSG CONSULTANTS, INC.**  
735 E. REMINGTON RD. SCHALMBURG, IL 60173  
TEL: \*1630.994.2600 | WWW.GSG-CONSULTANTS.COM  
ILLINOIS PROFESSIONAL DESIGN FIRM# 184-002652



DRAWN BY:	PROJECT:
UL	21-2007
CHECKED BY:	SCALE:
KB	SCALE
DATE:	SHEET #:
12/30/2025	1 of 3
SHEET NAME:	
Basement Floor Plan	
FILE NAME:	
518 JOLIET STREET	



1st Floor  
SCALE = N.T.S.



LEGEND

SUSPECT ACM SAMPLE LOCATIONS: EP121625-XX  
BATCH NUMBER: 377079

SUSPECT ASBESTOS-CONTAINING MATERIALS SAMPLE LOCATION PLAN

ASBESTOS SURVEY FOR BUILDING DEMOLITION (I-80)  
518 JOLIET STREET  
JOLIET, IL 60433



DRAWN BY:	PROJECT:
UL	21-2007
CHECKED BY:	SCALE:
KB	SCALE
DATE:	SHEET #:
12/30/2025	2 of 3
SHEET NAME:	
1st Floor - Floor Plan	
FILE NAME:	
518 JOLIET STREET	



SUSPECT ASBESTOS-CONTAINING MATERIALS SAMPLE LOCATION PLAN

ASBESTOS SURVEY FOR BUILDING DEMOLITION (I-80)  
518 JOLIET STREET  
JOLIET, IL 60433

GSG CONSULTANTS, INC.  
735 E. REMINGTON RD. SCHALMURG, IL 60173  
TEL: \*1630.994.2600 | WWW.GSG-CONSULTANTS.COM  
ILLINOIS PROFESSIONAL DESIGN FIRM# 184-002652

DRAWN BY:	PROJECT:
UL	21-2007
CHECKED BY:	SCALE:
KB	SCALE
DATE:	SHEET #:
12/30/2025	3 of 3
SHEET NAME:	
EXTERIOR	
FILE NAME:	
518 JOLIET STREET	

LEGEND

SUSPECT ACM SAMPLE LOCATIONS: EP121625-XX

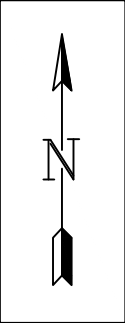
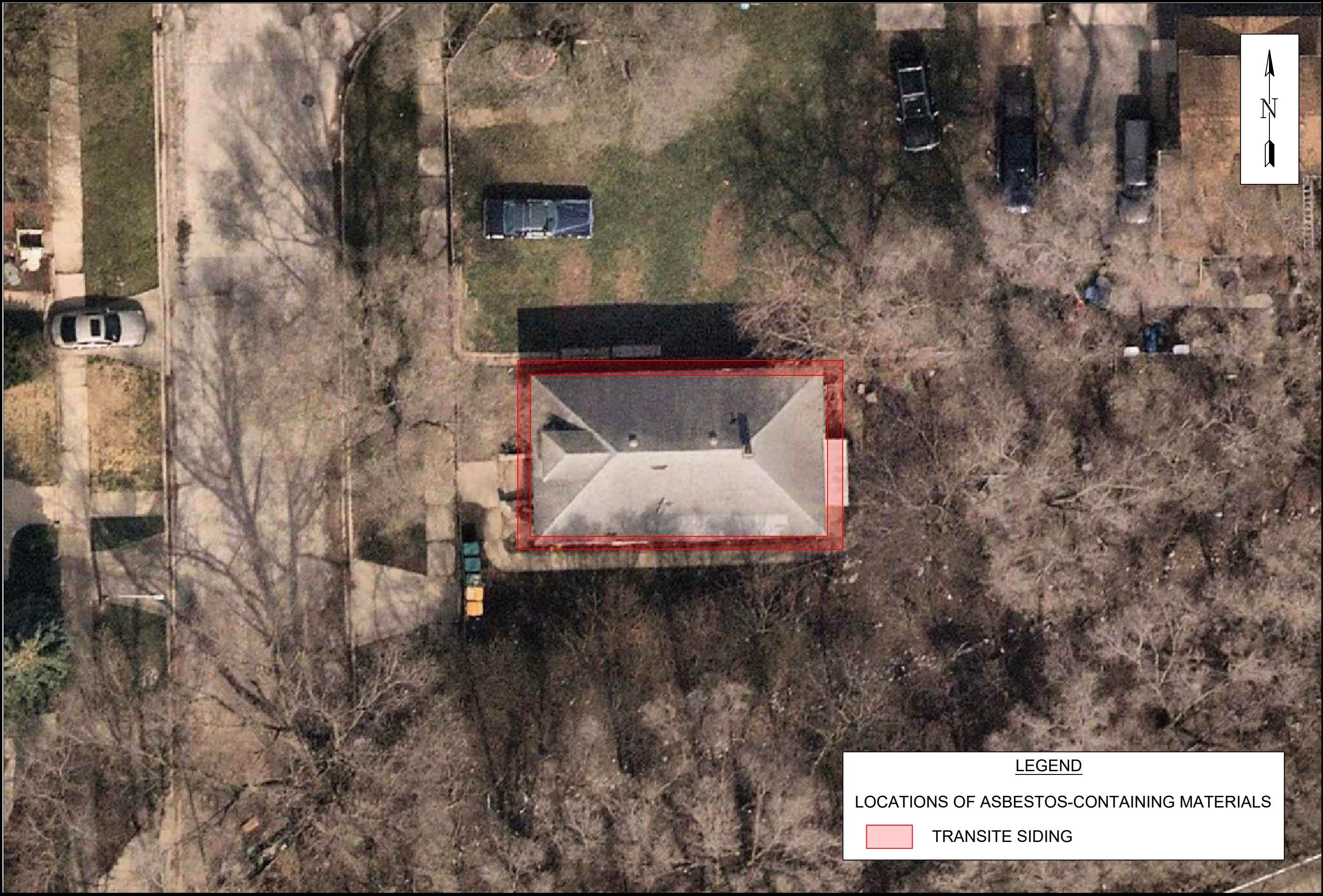
BATCH NUMBER: 377079

RED SAMPLES TESTED POSITIVE FOR ASBESTOS

## EXHIBIT 2

---

### ACM-1 ACM Location Plan



LEGEND

LOCATIONS OF ASBESTOS-CONTAINING MATERIALS

TRANSITE SIDING

ASBESTOS-CONTAINING MATERIALS LOCATIONS	
ASBESTOS SURVEY FOR BUILDING DEMOLITION (I-80) 518 JOLIET STREET JOLIET, IL 60433	
<div><div><div>GSG</div><div>GSG CONSULTANTS, INC. 735 E. REMINGTON RD. SCHALMBURG, IL 60173 TEL: *1630.994.2600   WWW.GSG-CONSULTANTS.COM ILLINOIS PROFESSIONAL DESIGN FIRM# 184-002652</div></div></div>	
DRAWN BY:	PROJECT:
UL	21-2007
CHECKED BY:	SCALE:
KB	SCALE
DATE:	SHEET #:
12/29/2025	3 of 3
SHEET NAME:	
EXTERIOR	
FILE NAME:	
518 JOLIET STREET	

## APPENDIX A

---

### Analytical Testing Results

**ASBESTOS ANALYSIS BY POLARIZED LIGHT MICROSCOPY**

Method: EPA/600/R-93/116

GSG Consultants, Inc.  
735 Remington Road  
Schaumburg, IL 60173  
Phone: (630) 994-2600  
Fax: (312) 733-5612

Reference: I-80 Over Des Plaines Date Received: 12/16/2025  
Location: 518 Joliet St., Joliet, IL Date Analyzed: 12/21/2025  
Batch No.: 377079 Date Reported: 12/21/2025  
Customer No.: 4651 Turn Around Time: 5 Days

Laboratory Sample	Customer Sample Number	Asbestos Components (%)	Non-Asbestos Components (%)
377079001	EP121625-1	ND	Cellulose 10-15% Binder 85-90%
377079002	EP121625-2	ND	Cellulose 10-15% Binder 85-90%
377079003	EP121625-3	ND	Cellulose 10-15% Binder 85-90%
377079004	EP121625-4	ND	Cellulose 1-5% Binder 95-99%
377079005	EP121625-5	ND	Cellulose 1-5% Binder 95-99%
377079006	EP121625-6	ND	Cellulose 1-5% Binder 95-99%
377079007	EP121625-4M	ND	Cellulose 1-5% Binder 95-99%
377079008	EP121625-5M	ND	Cellulose 1-5% Binder 95-99%
377079009	EP121625-6M	ND	Cellulose 1-5% Binder 95-99%
377079010	EP121625-7	ND	Binder 95-99% Other 1-5%

ND = Asbestos Not Detected (Not Present) NA = Not Analyzed NS = Not Submitted

Components of inhomogeneous samples are analyzed per our Standard Operating Procedure, or per customer request.

The use of the NVLAP logo does not imply endorsement by NVLAP or any agency of the US Government.

*The information contained in this report and any attachments is confidential information intended only for the use of the individual or entities named above. The results of this report relate only to the samples tested. If you have received this report in error, please notify us immediately by phone. This report shall not be reproduced, except in its entirety, unless written approval has been obtained from the laboratory. This report remains property of STAT Analysis until payment is received in full (see invoice).*

Analyzed by Name :

  
Daniel Mikos / Microscopy Manager

Date: 12/21/2025

# ASBESTOS ANALYSIS BY POLARIZED LIGHT MICROSCOPY

Method: EPA/600/R-93/116

GSG Consultants, Inc.  
 735 Remington Road  
 Schaumburg, IL 60173  
 Phone: (630) 994-2600  
 Fax: (312) 733-5612

Reference:	I-80 Over Des Plaines	Date Received:	12/16/2025
Location:	518 Joliet St., Joliet, IL	Date Analyzed:	12/21/2025
Batch No.:	377079	Date Reported:	12/21/2025
Customer No.:	4651	Turn Around Time:	5 Days

Laboratory Sample	Customer Sample Number	Asbestos Components (%)	Non-Asbestos Components (%)
377079011	EP121625-8	ND	Binder 95-99% Other 1-5%
377079012	EP121625-9	ND	Binder 95-99% Other 1-5%
377079013	EP121625-10	ND	Cellulose 1-5% Binder 95-99%
377079014	EP121625-11	ND	Cellulose 1-5% Binder 95-99%
377079015	EP121625-12	ND	Cellulose 1-5% Binder 95-99%
377079016	EP121625-13	Chrysotile 10-15%	Binder 85-90%
377079017	EP121625-14	NA	
377079018	EP121625-15	NA	
377079019	EP121625-16	ND	Cellulose 10-15% Binder 85-90%
377079020	EP121625-17	ND	Cellulose 10-15% Binder 85-90%
377079021	EP121625-18	ND	Cellulose 10-15% Binder 85-90%

ND = Asbestos Not Detected (Not Present)    NA = Not Analyzed    NS = Not Submitted

Components of inhomogeneous samples are analyzed per our Standard Operating Procedure, or per customer request.

The use of the NVLAP logo does not imply endorsement by NVLAP or any agency of the US Government.

*The information contained in this report and any attachments is confidential information intended only for the use of the individual or entities named above. The results of this report relate only to the samples tested. If you have received this report in error, please notify us immediately by phone. This report shall not be reproduced, except in its entirety, unless written approval has been obtained from the laboratory. This report remains property of STAT Analysis until payment is received in full (see invoice).*

Analyzed by Name :



**ASBESTOS ANALYSIS BY POLARIZED LIGHT MICROSCOPY**

Method: EPA/600/R-93/116

GSG Consultants, Inc.  
735 Remington Road  
Schaumburg, IL 60173  
Phone: (630) 994-2600  
Fax: (312) 733-5612

Reference: I-80 Over Des Plaines Date Received: 12/16/2025  
Location: 518 Joliet St., Joliet, IL Date Analyzed: 12/21/2025  
Batch No.: 377079 Date Reported: 12/21/2025  
Customer No.: 4651 Turn Around Time: 5 Days

Laboratory Sample	Customer Sample Number	Asbestos Components (%)	Non-Asbestos Components (%)
377079022	EP121625-19	ND	Cellulose 1-5% Binder 95-99%
377079023	EP121625-20	ND	Cellulose 1-5% Binder 95-99%
377079024	EP121625-21	ND	Cellulose 1-5% Binder 95-99%
377079025	EP121625-22 Layer 1	ND	Binder 85-90% Glass 10-15%
377079026	EP121625-23 Layer 1	ND	Binder 85-90% Glass 10-15%
377079027	EP121625-24 Layer 1	ND	Binder 85-90% Glass 10-15%
377079028	EP121625-22 Layer 2	ND	Binder 85-90% Glass 10-15%
377079029	EP121625-23 Layer 2	ND	Binder 85-90% Glass 10-15%
377079030	EP121625-24 Layer 2	ND	Binder 85-90% Glass 10-15%
377079031	EP121625-22 Layer 3	ND	Binder 85-90% Glass 10-15%

ND = Asbestos Not Detected (Not Present) NA = Not Analyzed NS = Not Submitted

Components of inhomogeneous samples are analyzed per our Standard Operating Procedure, or per customer request.

The use of the NVLAP logo does not imply endorsement by NVLAP or any agency of the US Government.

The information contained in this report and any attachments is confidential information intended only for the use of the individual or entities named above. The results of this report relate only to the samples tested. If you have received this report in error, please notify us immediately by phone. This report shall not be reproduced, except in its entirety, unless written approval has been obtained from the laboratory. This report remains property of STAT Analysis until payment is received in full (see invoice).

Analyzed by Name :



**ASBESTOS ANALYSIS BY POLARIZED LIGHT MICROSCOPY**

Method: EPA/600/R-93/116

GSG Consultants, Inc.  
735 Remington Road  
Schaumburg, IL 60173  
Phone: (630) 994-2600  
Fax: (312) 733-5612

Reference:	I-80 Over Des Plaines	Date Received:	12/16/2025
Location:	518 Joliet St., Joliet, IL	Date Analyzed:	12/21/2025
Batch No.:	377079	Date Reported:	12/21/2025
Customer No.:	4651	Turn Around Time:	5 Days

Laboratory Sample	Customer Sample Number	Asbestos Components (%)	Non-Asbestos Components (%)
377079032	EP121625-23 Layer 3	ND	Binder 85-90% Glass 10-15%
377079033	EP121625-24 Layer 3	ND	Binder 85-90% Glass 10-15%

ND = Asbestos Not Detected (Not Present)    NA = Not Analyzed    NS = Not Submitted

Components of inhomogeneous samples are analyzed per our Standard Operating Procedure, or per customer request.

The use of the NVLAP logo does not imply endorsement by NVLAP or any agency of the US Government.

*The information contained in this report and any attachments is confidential information intended only for the use of the individual or entities named above. The results of this report relate only to the samples tested. If you have received this report in error, please notify us immediately by phone. This report shall not be reproduced, except in its entirety, unless written approval has been obtained from the laboratory. This report remains property of STAT Analysis until payment is received in full (see invoice).*

Analyzed by Name : 



GSG CONSULTANTS, INC.

Engineering and Industrial Hygiene Services

735 Remington Road

Schaumburg, IL 60173

(630) 994-2600 Fax: (312) 733-5612

www.gsg-consultants.com

Page 1 of 2

377079

PLM BULK LABORATORY ANALYSIS FORM

Project Name: <u>i-80 Overpass</u>	Project Manager: <u>Kyle Boyd</u>
Project Number:	Building Inspector: <u>Erin Rahimi</u>
Project Address: <u>518 Juliet St</u>	IDPH Number:
City/ State: <u>Joliet, IL</u>	Work Day: S M <u>0</u> W TH F S
Client: <u>WSP</u>	Analyze by Method:
Date: <u>12/16/25</u>	EPA/600/R-93-116

Field Number	HA Number	Type of material, specific sample location (i.e. Room Number, Building Construction Date)
<u>EP 121625 - 1</u>	<u>1</u>	<u>Drywall System - Kitchen</u>
<u>- 2</u>	<u>1</u>	<u>- Living Room</u>
<u>- 3</u>		<u>- Bedroom</u>
<u>- 4</u>	<u>2</u>	<u>12" x 12" Brown FT - Kitchen</u>
<u>- 5</u>	<u>1</u>	<u>1</u>
<u>- 6</u>	<u>1</u>	<u>1</u>
<u>- 7</u>	<u>3</u>	<u>Stone Pattern Inlaid - Bathroom</u>
<u>- 8</u>	<u>1</u>	<u>- Entry</u>
<u>- 9</u>	<u>1</u>	<u>1</u>
<u>- 10</u>	<u>4</u>	<u>Carpet - Basement</u>
<u>- 11</u>	<u>1</u>	<u>1</u>
<u>- 12</u>	<u>1</u>	<u>1</u>
<u>- 13</u>	<u>5</u>	<u>Transfer Sidewalk</u>
<u>- 14</u>	<u>1</u>	<u>1</u>
<u>- 15</u>	<u>1</u>	<u>1</u>

TURN AROUND TIME:

1 Day  
2 Days  
3 Days

(5 Day) Other

COMMENTS: E-mail Results to:  
[erarahimi@gsg-consultants.com](mailto:erarahimi@gsg-consultants.com)

STOP AT FIRST POSITIVE

CHAIN OF CUSTODY RECORD

Collected By (Signature) <u>GMM</u>	Date: <u>12/16/25</u>	Time:	Relinquished by (Signature) <u>[Signature]</u>	Date: <u>12/16/25</u>	Time: <u>1:39</u>
Received by: (Signature)	Date:	Time:	Relinquished by: (signature)	Date:	Time:
Dispatched by: (Signature, if mailed)	Date:	Time:	Received for Laboratory by: <u>[Signature]</u>	Date: <u>12/16/25</u>	Time: <u>13:39</u>

Definitions: BLK-Bulk Sample, PLM-Polarized Light Microscopy, TEM-Transmission Electron Microscope.



GSG CONSULTANTS, INC.

Engineering and Industrial Hygiene Services

735 Remington Road

Schaumburg, IL 60173

(630) 994-2600 Fax: (312) 733-5612

www.gsg-consultants.com

Page 2 of 2

377079

PLM BULK LABORATORY ANALYSIS FORM

<b>Project Name:</b>	<b>Project Manager:</b>
<b>Project Number:</b>	<b>Building Inspector:</b>
<b>Project Address:</b>	<b>IDPH Number:</b>
<b>City/ State:</b>	<b>Work Day:</b> S M T W TH F S
<b>Client:</b>	<b>Analyze by Method:</b>
<b>Date:</b>	EPA/600/R-93-116

Field Number	HA Number	Type of material, specific sample location (i.e. Room Number, Building Construction Date)
16	6	Black layer Barrier
17	1	1
18	1	1
19	7	window casing
20	1	1
21	1	1
22	8	roofing material 3(layers)
23	1	1
24	1	1

<b>TURN AROUND TIME:</b>	<b>1 Day</b>	<b>COMMENTS:</b> E-mail Results to: <a href="mailto:epahomi@gsg-consultants.com">epahomi@gsg-consultants.com</a>
	<b>2 Days</b>	
	<b>3 Days</b>	
<b>(5 Day) Other</b>		<b>STOP AT FIRST POSITIVE</b>

CHAIN OF CUSTODY RECORD

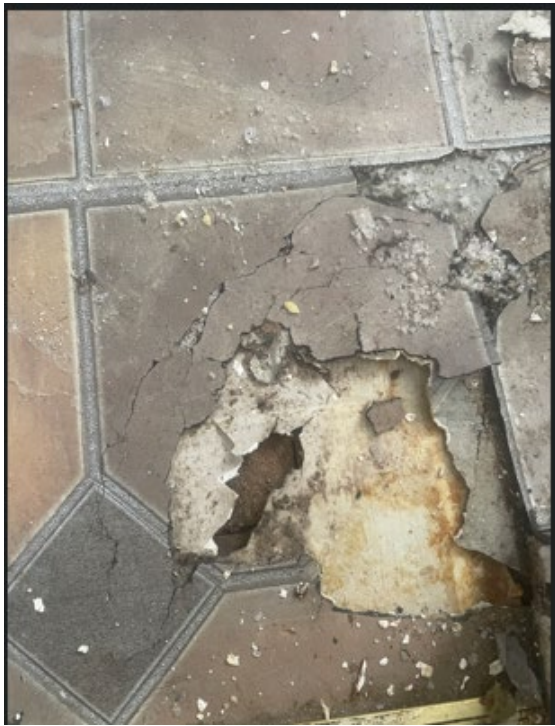
Collected By(Signature) <i>[Signature]</i>	Date: 12/16/25	Time:	Relinquished by (Signature) <i>[Signature]</i>	Date: 12/16/25	Time: 1:39
Received by: (Signature)	Date:	Time:	Relinquished by: (signature)	Date:	Time:
Dispatched by: (Signature, if mailed)	Date:	Time:	Received for Laboratory by: <i>[Signature]</i>	Date: 12/16/25	Time: 13:39

Definitions: BLK-Bulk Sample, PLM-Polarized Light Microscopy, TEM-Transmission Electron Microscope.

## APPENDIX B

---

### Reference Photographs



**Material Description:**  
12"x12" Brown Floor Tile

**Photo Location:**  
Kitchen

**ILLINOIS DEPARTMENT OF  
TRANSPORTATION  
I-80 OVER DES PLAINES RIVER BRIDGE  
IMPROVEMENTS**



GSG Consultants, Inc.  
735 Remington Road  
Schaumburg, Illinois 60173

**Date:** 12/16/25



**Material Description:**  
Drywall System (Drywall,  
Tape, Compound)

**Photo Location:**  
Living Room

**ILLINOIS DEPARTMENT OF  
TRANSPORTATION  
I-80 OVER DES PLAINES RIVER BRIDGE  
IMPROVEMENTS**



GSG Consultants, Inc.  
735 Remington Road  
Schaumburg, Illinois 60173

**Date:** 12/16/25



**Material Description:**  
Stone Pattern Linoleum

**Photo Location:**  
Entry

**ILLINOIS DEPARTMENT OF  
TRANSPORTATION  
I-80 OVER DES PLAINES RIVER BRIDGE  
IMPROVEMENTS**



GSG Consultants, Inc.  
735 Remington Road  
Schaumburg, Illinois 60173

**Date:** 12/16/25



**Material Description:**  
Window Caulking & CMU  
Mortar

**Photo Location:**

**ILLINOIS DEPARTMENT OF  
TRANSPORTATION  
I-80 OVER DES PLAINES RIVER BRIDGE  
IMPROVEMENTS**



GSG Consultants, Inc.  
735 Remington Road  
Schaumburg, Illinois 60173

**Date:** 12/16/25



**Material Description:**  
Black Vapor Barrier &  
Transite Siding -**Tested  
Positive for Asbestos**

**Photo Location:**  
Exterior Siding

**ILLINOIS DEPARTMENT OF  
TRANSPORTATION  
I-80 OVER DES PLAINES RIVER BRIDGE  
IMPROVEMENTS**



GSG Consultants, Inc.  
735 Remington Road  
Schaumburg, Illinois 60173

**Date:** 12/16/25



**Material Description:**  
Roofing Material

**Photo Location:**  
Roof

**ILLINOIS DEPARTMENT OF  
TRANSPORTATION  
I-80 OVER DES PLAINES RIVER BRIDGE  
IMPROVEMENTS**



GSG Consultants, Inc.  
735 Remington Road  
Schaumburg, Illinois 60173

**Date:** 12/16/25

## APPENDIX C

---

### Inspector Licenses and Training Certifications



**OCCUPATIONAL TRAINING & SUPPLY, INC.**

**2025**

7233 S. Adams Street | Willowbrook, IL 60527 (630) 655-3900 | [www.otssafety.com](http://www.otssafety.com)

# Asbestos Building Inspector Refresher

Occupational Training & Supply, Inc. certifies that

**Erin Pahomi**

has successfully completed the Asbestos Building Inspector Refresher course and has passed the competency exam with a minimum score of 70%. The course is accredited by the Illinois Department of Public Health and Indiana Department of Environmental Management for purposes of accreditation in accordance with EPA 40 CFR 763, Asbestos Hazard Emergency Response Act (AHERA) and TSCA Title II.

Course Date: 1/18/2025

Exam Date: 1/18/2025

Expiration Date: 1/18/2026

Certificate Number: BIR2501180283

Course Credit Hours: BIR 4 Hours

---

Kristina Miczek, Training Manager

ERIN PAHOMI  
1016 N PLUM GROVE APT 316  
SCHAUMBURG, IL 60173

5/28/2025

ASBESTOS PROFESSIONAL LICENSE ID NUMBER: 20674

Enclosed is your Asbestos Professional License. Please note the expiration date on the card and in the image depicted below.

COPY OF THE ASBESTOS PROFESSIONAL LICENSE

Front of License

Back of License



ASBESTOS  
PROFESSIONAL  
LICENSE

ENDORSEMENTS

TC EXPIRES

INSPECTOR

1/18/2026

ID NUMBER

ISSUED

EXPIRES

100 - 20674

5/28/2025

05/15/2026

ERIN PAHOMI

1016 N PLUM GROVE APT 316  
SCHAUMBURG, IL 60173

Environmental Health



Alteration of this license shall result in legal action  
This license issued under authority of the State of Illinois  
Department of Public Health  
This license is valid only when accompanied by a valid  
training course certificate.

For more information or have any questions or need further assistance, contact the Asbestos Program at (217)782-3517 or 1-800-85-5897.

Web address is: [dph.illinois.gov/topics-services/environmental-health-protection/asbestos](http://dph.illinois.gov/topics-services/environmental-health-protection/asbestos)  
Email address: [dph.asbestos@illinois.gov](mailto:dph.asbestos@illinois.gov)

PROTECTING HEALTH, IMPROVING LIVES

Nationally Accredited by PHAB

## APPENDIX D

---

### Laboratory Accreditations

United States Department of Commerce  
National Institute of Standards and Technology



---

**Certificate of Accreditation to ISO/IEC 17025:2017**

---

NVLAP LAB CODE: 101202-0

**STAT Analysis Corporation**

Chicago, IL

*is accredited by the National Voluntary Laboratory Accreditation Program for specific services,  
listed on the Scope of Accreditation, for:*

**Asbestos Fiber Analysis**

*This laboratory is accredited in accordance with the recognized International Standard ISO/IEC 17025:2017.  
This accreditation demonstrates technical competence for a defined scope and the operation of a laboratory quality  
management system (refer to joint ISO-ILAC-IAF Communique on ISO/IEC 17025).*

---

2025-07-01 through 2026-06-30

Effective Dates



A handwritten signature in blue ink, appearing to read "R. J. Knech", written over a horizontal line.

For the National Voluntary Laboratory Accreditation Program

SCOPE OF ACCREDITATION TO ISO/IEC 17025:2017

**STAT Analysis Corporation**

Sterling Labs  
2242 W. Harrison Suite 200  
Chicago, IL 60612  
Joseph Gusek  
Phone: 312-733-0551  
Email: [jgusek@thesterlinglab.com](mailto:jgusek@thesterlinglab.com)  
[www.thesterlinglab.com](http://www.thesterlinglab.com)

**ASBESTOS FIBER ANALYSIS**

**NVLAP LAB CODE 101202-0**

**Bulk Asbestos Analysis**

<u>Code</u>	<u>Description</u>
18/A01	EPA -- 40 CFR Appendix E to Subpart E of Part 763, Interim Method of the Determination of Asbestos in Bulk Insulation Samples
18/A03	EPA 600/R-93/116: Method for the Determination of Asbestos in Bulk Building Materials

**Airborne Asbestos Analysis**

<u>Code</u>	<u>Description</u>
18/A02	U.S. EPA's "Interim Transmission Electron Microscopy Analytical Methods-Mandatory and Nonmandatory-and Mandatory Section to Determine Completion of Response Actions" as found in 40 CFR, Part 763, Subpart E, Appendix A.



For the National Voluntary Laboratory Accreditation Program