

STATE OF ILLINOIS
 DEPARTMENT OF TRANSPORTATION
 DIVISION OF HIGHWAYS

F.A.P. RTE.	SECTION	COUNTY	TOTAL SHEETS	SHEET NO.
330	2010-082-1	COOK	152	1
ILLINOIS CONTRACT NO. 60L73				

FOR INDEX OF SHEETS, SEE SHEET NO. 2

PROJECT IS LOCATED IN THE CITY OF COUNTRYSIDE AND VILLAGE OF HODGKINS

TRAFFIC DATA
 ADT:

US RTE. 12/20/45 (SOUTH LEG) = 36,400 (2003) 37,000 (2030)
 US RTE. 12/20/45 (NORTH LEG) = 38,700 (2003) 39,000 (2030)
 JOLIET ROAD (WEST LEG) = 22,600 (2003) 22,000 (2030)
 JOLIET ROAD (EAST LEG) = 23,500 (2003) 22,000 (2030)

DESIGN SPEED:

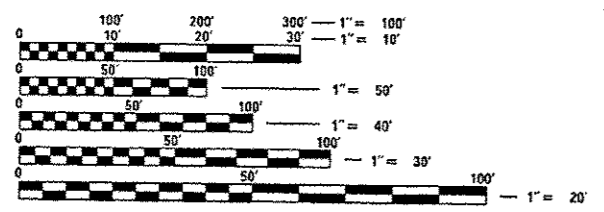
US RTE. 12/20/45 = 45 MPH
 JOLIET ROAD (WEST LEG) = 50 MPH
 JOLIET ROAD (EAST LEG) = 45 MPH

POSTED SPEED LIMIT:

US RTE. 12/20/45 = 35 MPH
 JOLIET ROAD (WEST LEG) = 40 MPH
 JOLIET ROAD (EAST LEG) = 35 MPH

DESIGN DESIGNATION:

US RTE. 12/20/45 3,680(30) OTHER PRINCIPAL ARTERIAL 4.84 (FD-20)
 JOLIET ROAD 2,125(30) MINOR ARTERIAL 4.84 (FD-20)



FULL SIZE PLANS HAVE BEEN PREPARED USING STANDARD ENGINEERING SCALES. REDUCED SIZED PLANS WILL NOT CONFORM TO STANDARD SCALES. IN MAKING MEASUREMENTS ON REDUCED PLANS, THE ABOVE SCALES MAY BE USED.

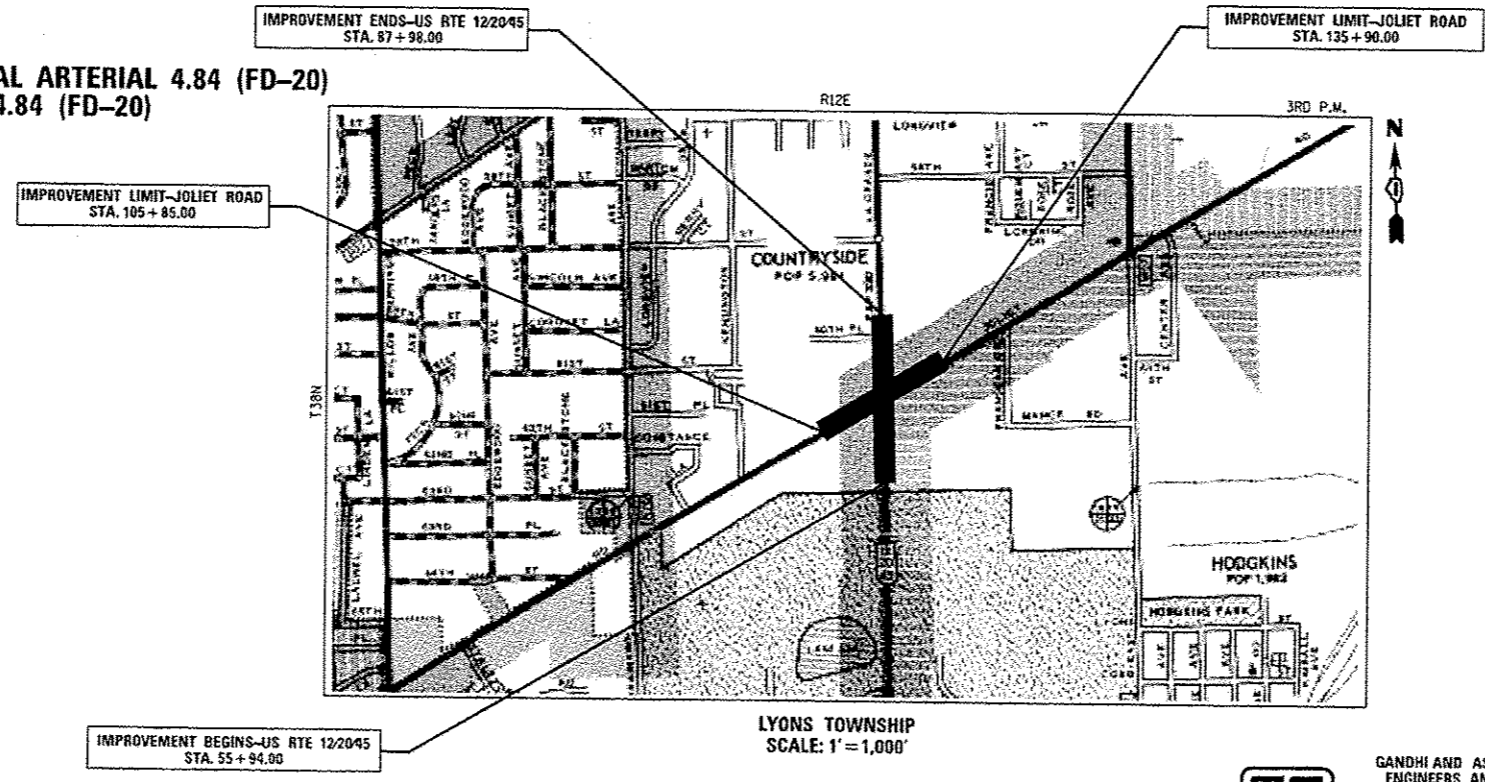
J.U.L.I.E.
 JOINT UTILITY LOCATION INFORMATION FOR EXCAVATION
 1-800-892-0123
 OR 811

DISTRICT ONE - DESIGN
 PROJECT MANAGER: ISAAC KWARTENG (847) 705-4230
 PROJECT ENGINEER: ALIX BRICE (847) 705-4552

CONTRACT NO. 60L73

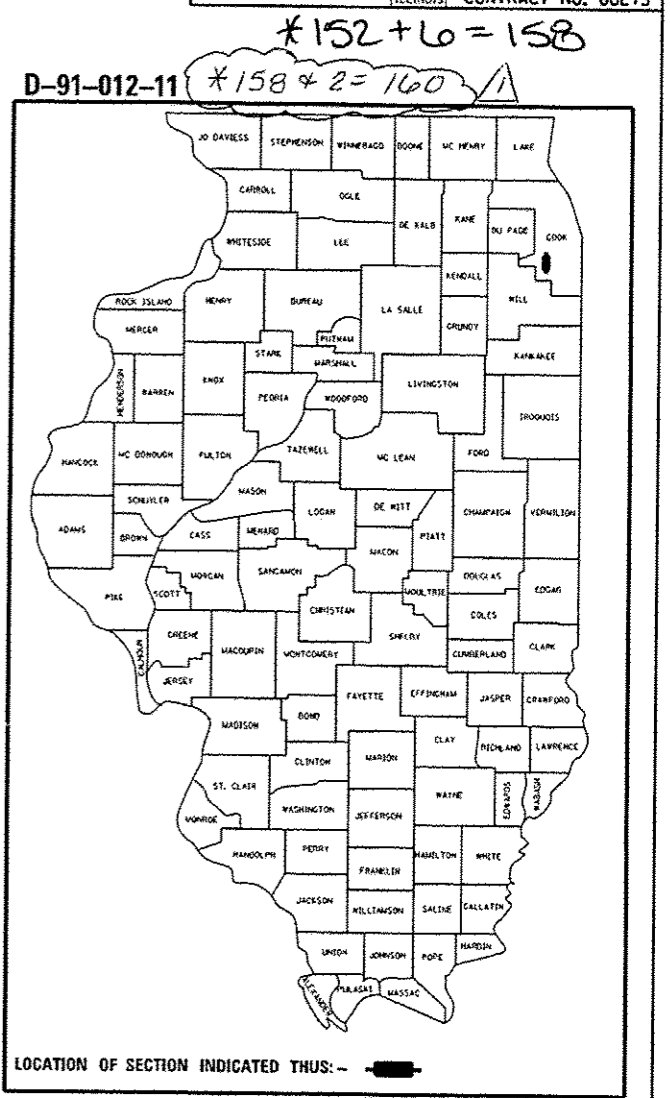
**PROPOSED
 HIGHWAY PLANS**

FAP ROUTE 330 (US RTE. 12/20/45) (LaGRANGE ROAD)
 SECTION NO.: 2010-082-1
 AT JOLIET ROAD
 PROJECT NO.: ACNHPP-0330(075)
 INTERSECTION RECONSTRUCTION
 COOK COUNTY
 C-91-012-11



GROSS & NET LENGTH OF PROJECT = 1,983 FT. = 0.37 MILES

Rev. 12-30-13



STATE OF ILLINOIS
 DEPARTMENT OF TRANSPORTATION
 DIVISION OF HIGHWAYS

SUBMITTED October 8 2013
John P. Peterson Jr.
 DEPUTY DIRECTOR OF HIGHWAYS, REGION ENGINEER

Dec 6 2013
John D. Baranzelli, P.E.
 ENGINEER OF DESIGN AND ENVIRONMENT

Dec 6 2013
Omer Osman, P.E.
 DIRECTOR OF HIGHWAYS, CHIEF ENGINEER

PRINTED BY THE AUTHORITY
 OF THE STATE OF ILLINOIS

GO GANDHI AND ASSOCIATES, INC.
 ENGINEERS AND PLANNERS
 6035 N. NORTHWEST HIGHWAY, SUITE 306
 CHICAGO, IL 60631
 (773) 774-5910

SIGNATURE: [Signature]
 DATE: 12-7-2013
 IL LICENSE NO. 062-034993
 EXP. DATE: NOVEMBER 30, 2013
 FIELD: GANDHI AND ASSOCIATES, INC.
 TRAFFIC SIGNALS/ROADWAY LIGHTING
 (SHEETS 74 TO 114)

JJB JAMES J. BENES & ASSOCIATES
 CONSULTING ENGINEERS
 950 WARRENVILLE ROAD, SUITE 101
 LISLE, IL 60532
 (630) 719-7870

SIGNATURE: [Signature]
 DATE: 10/17/2013
 IL LICENSE NO. 062-045065
 EXP. DATE: NOVEMBER 30, 2013
 FIELD: JAMES J. BENES AND ASSOCIATES, INC.
 CIVIL ENGINEERING
 (SHEETS 1 TO 73 AND 115 TO 152)