

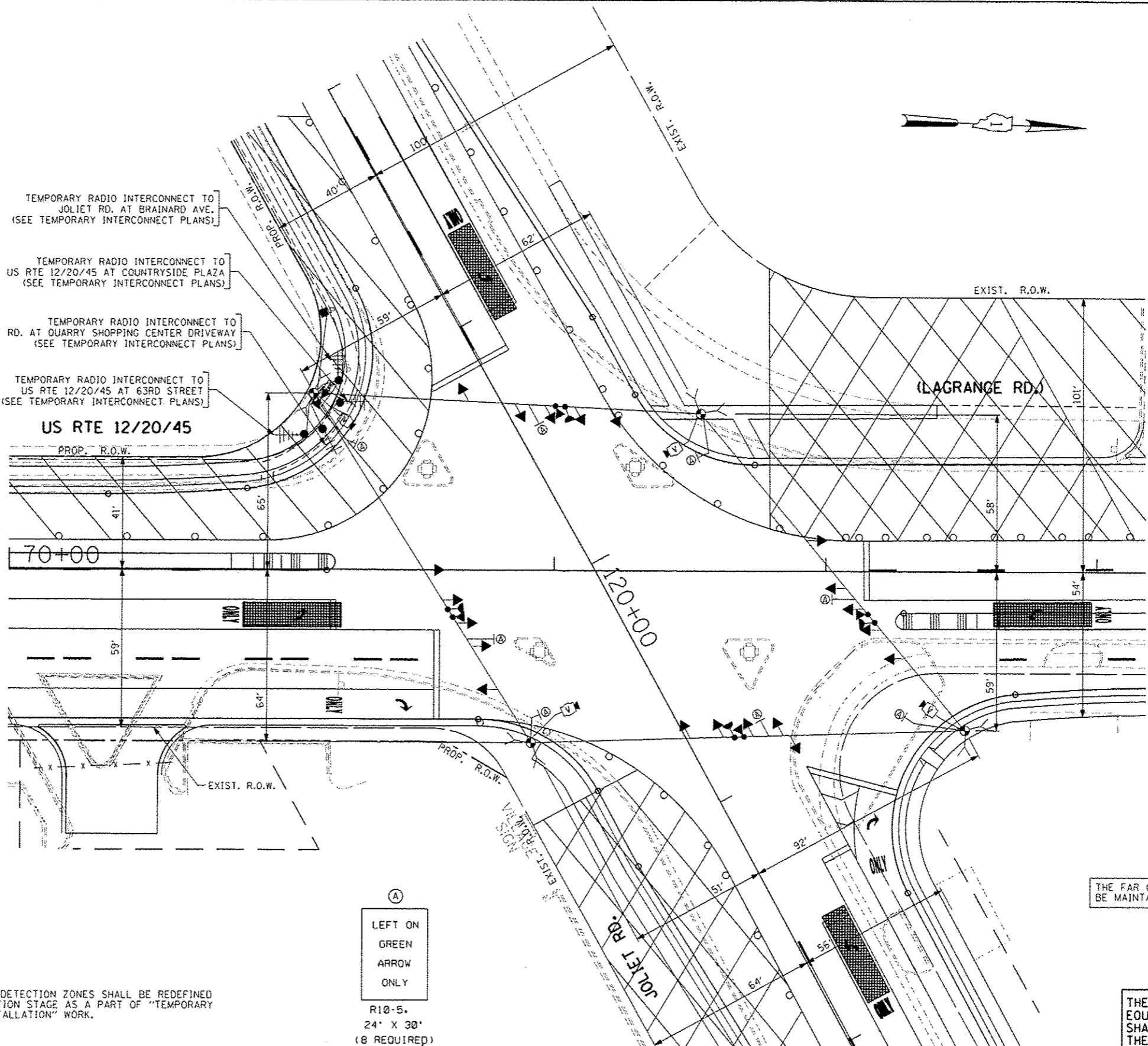
TEMPORARY RADIO INTERCONNECT TO JOLIET RD. AT BRAINARD AVE. (SEE TEMPORARY INTERCONNECT PLANS)

TEMPORARY RADIO INTERCONNECT TO US RTE 12/20/45 AT COUNTRYSIDE PLAZA (SEE TEMPORARY INTERCONNECT PLANS)

TEMPORARY RADIO INTERCONNECT TO JOLIET RD. AT QUARRY SHOPPING CENTER DRIVEWAY (SEE TEMPORARY INTERCONNECT PLANS)

TEMPORARY RADIO INTERCONNECT TO US RTE 12/20/45 AT 63RD STREET (SEE TEMPORARY INTERCONNECT PLANS)

US RTE 12/20/45



NOTE 1: THE FAR OUT VIDEO DETECTION ZONES SHALL BE REDEFINED FOR EACH CONSTRUCTION STAGE AS A PART OF "TEMPORARY TRAFFIC SIGNAL INSTALLATION" WORK.

(A)
LEFT ON
GREEN
ARROW
ONLY
R10-5.
24" X 30"
(8 REQUIRED)

THE FAR OUT VIDEO DETECTION ZONES WILL BE MAINTAINED AS SHOWN ON SHEET NO. 86

THE TRAFFIC SIGNAL CONTROL EQUIPMENT FOR THIS PROJECT SHALL BE "EAGLE" TO MATCH THE EXISTING ADJACENT SYSTEM.

TEMPORARY TRAFFIC SIGNAL PLAN - STAGE 2

FILE NAME * #FILE#	USER NAME * #USER#	DESIGNED - PKG	REVISED - APPENDIX NO. 6, 12/26/2013	STATE OF ILLINOIS DEPARTMENT OF TRANSPORTATION	TEMPORARY TRAFFIC SIGNAL INSTALLATION PLAN US RTE 12/20/45 (LAGRANGE RD.) AT JOLIET ROAD STAGE 2 (SHEET 4 OF 5)		F.A.P. RTE.	SECTION	COUNTY	TOTAL SHEETS	SHEET NO.	
		DRAWN - MG, EA	REVISED -		SCALE: 1" = 20'	SHEET NO. OF SHEETS	STA. TO STA.	330	2010-082-1	COOK	152	88
		CHECKED - PKC	REVISED -									
		DATE - 12/11/2013	REVISED -									
							FED. ROAD DIST. NO. - ILLINOIS FED. AID PROJECT		CONTRACT NO. 60L73			