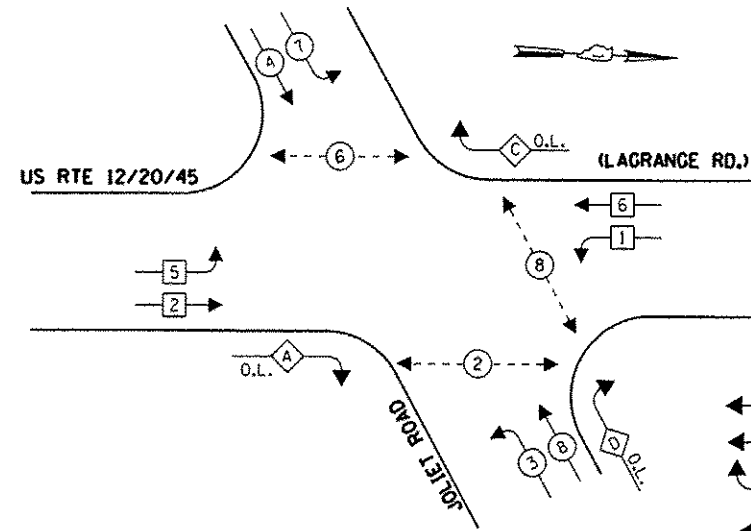


SCHEDULE OF QUANTITIES

QUANTITY	UNIT	ITEM
20	50 FT	SIGN PANEL, TYPE 1
1	EACH	SERVICE INSTALLATION - POLE MOUNTED
1534	FOOT	UNDERGROUND CONDUIT, GALVANIZED STEEL, 2" DIA.
69	FOOT	UNDERGROUND CONDUIT, GALVANIZED STEEL, 2 1/2" DIA.
39	FOOT	UNDERGROUND CONDUIT, GALVANIZED STEEL, 3" DIA.
651	FOOT	UNDERGROUND CONDUIT, GALVANIZED STEEL, 4" DIA.
7	EACH	HANDHOLE
4	EACH	HEAVY-DUTY HANDHOLE
2	EACH	DOUBLE HANDHOLE
1	EACH	TRANSCEIVER-FIBER OPTIC
1418	FOOT	ELECTRIC CABLE IN CONDUIT, SIGNAL NO. 14 2C
3018	FOOT	ELECTRIC CABLE IN CONDUIT, SIGNAL NO. 14 3C
2442	FOOT	ELECTRIC CABLE IN CONDUIT, SIGNAL NO. 14 5C
2741	FOOT	ELECTRIC CABLE IN CONDUIT, SIGNAL NO. 14 7C
7182	FOOT	ELECTRIC CABLE IN CONDUIT, LEAD-IN, NO. 14 1 PAIR
218	FOOT	ELECTRIC CABLE IN CONDUIT, SERVICE, NO. 6 2C
977	FOOT	ELECTRIC CABLE IN CONDUIT, EQUIPMENT GROUNDING CONDUCTOR, NO. 6 1C
2	EACH	TRAFFIC SIGNAL POST, GALVANIZED STEEL 16 FT.
1	EACH	STEEL MAST ARM ASSEMBLY AND POLE, 50 FT.
1	EACH	STEEL MAST ARM ASSEMBLY AND POLE, 52 FT.
1	EACH	STEEL MAST ARM ASSEMBLY AND POLE WITH DUAL MAST ARMS, 44 FT. AND 50 FT.
8	FOOT	CONCRETE FOUNDATION, TYPE A
4	FOOT	CONCRETE FOUNDATION, TYPE C
62	FOOT	CONCRETE FOUNDATION, TYPE E 36-INCH DIAMETER
8	EACH	SIGNAL HEAD, LED, 1-FACE, 3-SECTION, MAST ARM MOUNTED
8	EACH	SIGNAL HEAD, LED, 1-FACE, 5-SECTION, MAST ARM MOUNTED
2	EACH	SIGNAL HEAD, LED, 2-FACE, 1-3 SECTION, 1-5 SECTION, BRACKET MOUNTED
4	EACH	PEDESTRIAN SIGNAL HEAD, LED, 1-FACE, BRACKET MOUNTED WITH COUNTDOWN TIMER
1	EACH	PEDESTRIAN SIGNAL HEAD, LED, 2-FACE, BRACKET MOUNTED WITH COUNTDOWN TIMER
16	EACH	TRAFFIC SIGNAL BACKPLATE, LOUVERED, ALUMINUM
17	EACH	INDUCTIVE LOOP DETECTOR
859	FOOT	DETECTOR LOOP, TYPE I
3	EACH	LIGHT DETECTOR
1	EACH	LIGHT DETECTOR AMPLIFIER
6	EACH	PEDESTRIAN PUSH-BUTTON
4	EACH	TEMPORARY TRAFFIC SIGNAL INSTALLATION
1	EACH	REMOVE EXISTING TRAFFIC SIGNAL EQUIPMENT
18	EACH	REMOVE EXISTING HANDHOLE
5	EACH	REMOVE EXISTING CONCRETE FOUNDATION
660	FOOT	EMERGENCY VEHICLE PRIORITY SYSTEM LINE SENSOR CABLE, NO. 20 3/C
1	EACH	FULL-ACTUATED CONTROLLER AND TYPE IV CABINET, SPECIAL
1	EACH	UNINTERRUPTIBLE POWER SUPPLY, SPECIAL
4	EACH	TEMPORARY TRAFFIC SIGNAL TIMING
4	EACH	ILLUMINATED STREET NAME SIGN
1	EACH	STEEL MAST ARM ASSEMBLY AND POLE WITH DUAL MAST ARMS, 40 FT. AND 54 FT.

100% COST TO CITY OF COUNTRYSIDE
 ** 3 EACH ILLUMINATED STREET NAME SIGNS ARE 100% COST TO CITY OF COUNTRYSIDE
 AND 1 EACH ILLUMINATED STREET NAME SIGN IS 100% COST TO VILLAGE OF HODCKINS

CONTROLLER SEQUENCE



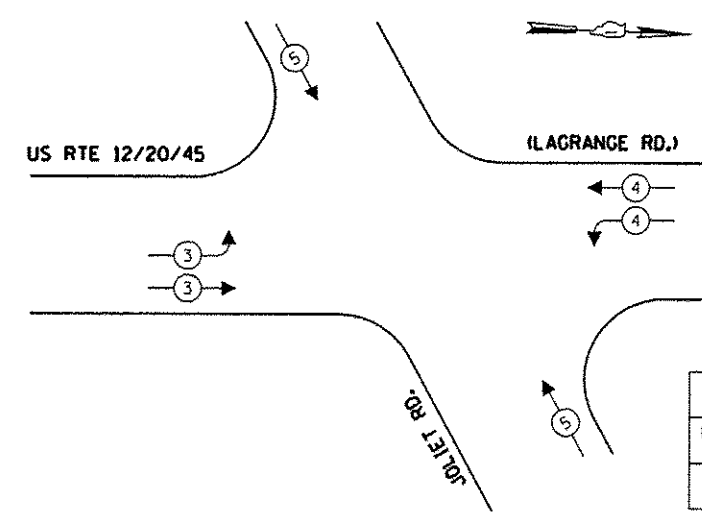
LEGEND

- ← (circle with dot) → DUAL ENTRY PHASE
- ← (square with dot) → SINGLE ENTRY PHASE
- ← (diamond with O.L.) → OVERLAP
- ← (circle with dot) → PEDESTRIAN PHASE
- * NUMBER REFERS TO ASSOCIATED PHASE

PHASE DESIGNATION DIAGRAM

OVERLAP LETTER	PERMISSIVE PHASE	PROTECTED PHASE
A	= 2 + 3	
C	= 6 + 7	
D	= 8 + 1	

EMERGENCY VEHICLE PREEMPTION SEQUENCE



PROPOSED EMERGENCY VEHICLE PREEMPTORS			
EMERGENCY VEHICLE PREEMPTOR	3	4	5
MOVEMENT	→	←	↑

THE TRAFFIC SIGNAL CONTROL EQUIPMENT FOR THIS PROJECT SHALL BE "EAGLE" TO MATCH THE EXISTING ADJACENT SYSTEM.