

STATE OF ILLINOIS  
 DEPARTMENT OF TRANSPORTATION  
 DIVISION OF HIGHWAYS

F.A.P. RTE.	SECTION	COUNTY	TOTAL SHEETS	SHEET NO.
330	2010-082-1	COOK	152	1
ILLINOIS CONTRACT NO. 60L73				

FOR INDEX OF SHEETS, SEE SHEET NO. 2

PROJECT IS LOCATED IN THE CITY OF COUNTRYSIDE AND VILLAGE OF HODGKINS

D-91-012-11 \*152+6 = 158  
 \*158+2 = 160

**PROPOSED  
 HIGHWAY PLANS**

FAP ROUTE 330 (US RTE. 12/20/45) (LaGRANGE ROAD)  
 SECTION NO.: 2010-082-1  
 AT JOLIET ROAD  
 PROJECT NO.: ACNHPP-0330(075)  
 INTERSECTION RECONSTRUCTION  
 COOK COUNTY  
 C-91-012-11



LOCATION OF SECTION INDICATED THUS: [Symbol]

**TRAFFIC DATA**  
 ADT:

US RTE. 12/20/45 (SOUTH LEG) = 36,400 (2003) 37,000 (2030)  
 US RTE. 12/20/45 (NORTH LEG) = 38,700 (2003) 39,000 (2030)  
 JOLIET ROAD (WEST LEG) = 22,600 (2003) 22,000 (2030)  
 JOLIET ROAD (EAST LEG) = 23,500 (2003) 22,000 (2030)

**DESIGN SPEED:**

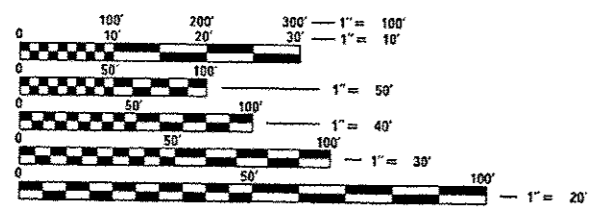
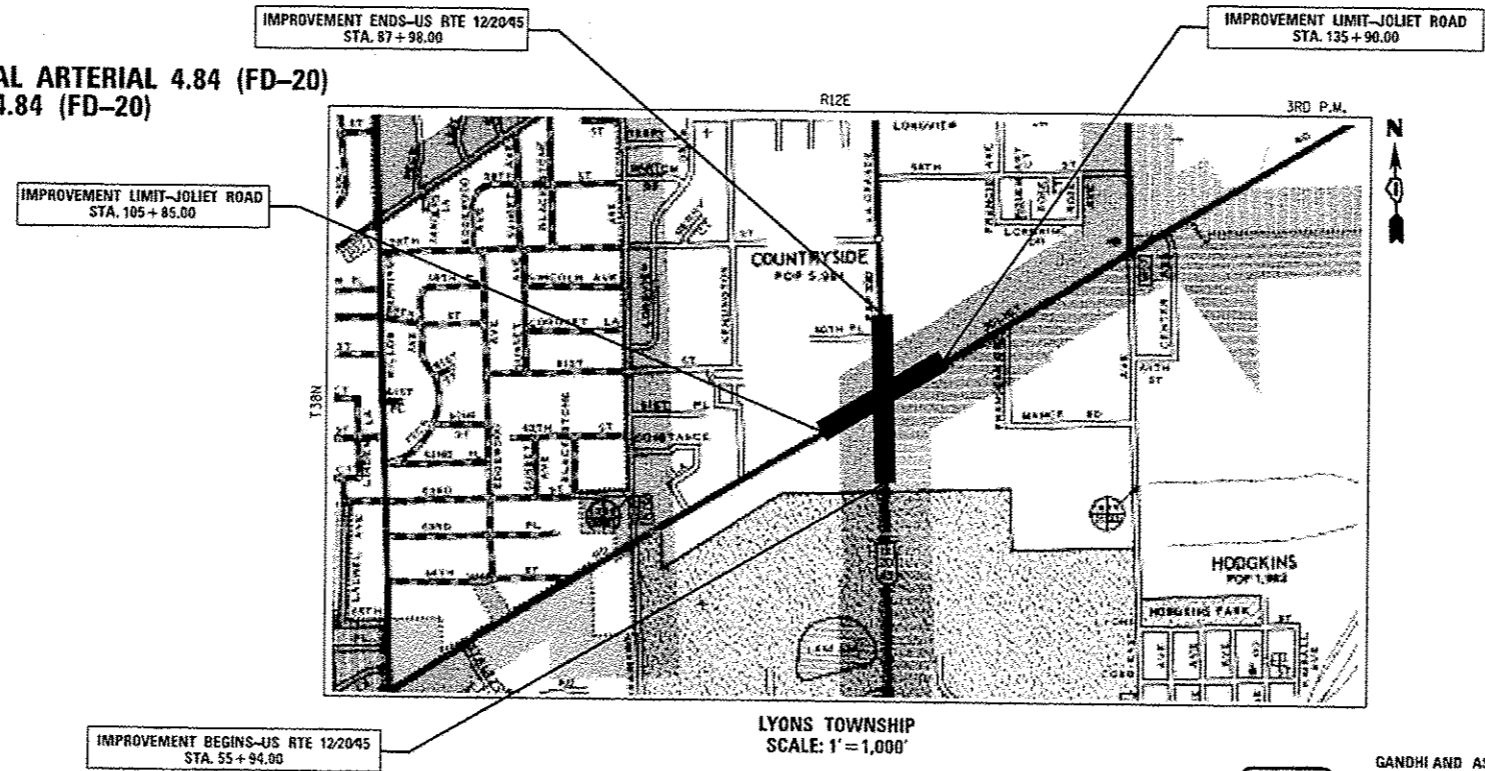
US RTE. 12/20/45 = 45 MPH  
 JOLIET ROAD (WEST LEG) = 50 MPH  
 JOLIET ROAD (EAST LEG) = 45 MPH

**POSTED SPEED LIMIT:**

US RTE. 12/20/45 = 35 MPH  
 JOLIET ROAD (WEST LEG) = 40 MPH  
 JOLIET ROAD (EAST LEG) = 35 MPH

**DESIGN DESIGNATION:**

US RTE. 12/20/45 3,680(30) OTHER PRINCIPAL ARTERIAL 4.84 (FD-20)  
 JOLIET ROAD 2,125(30) MINOR ARTERIAL 4.84 (FD-20)



FULL SIZE PLANS HAVE BEEN PREPARED USING STANDARD ENGINEERING SCALES. REDUCED SIZED PLANS WILL NOT CONFORM TO STANDARD SCALES. IN MAKING MEASUREMENTS ON REDUCED PLANS, THE ABOVE SCALES MAY BE USED.

J.U.L.I.E.  
 JOINT UTILITY LOCATION INFORMATION FOR EXCAVATION  
 1-800-892-0123  
 OR 811

STATE OF ILLINOIS  
 DEPARTMENT OF TRANSPORTATION  
 DIVISION OF HIGHWAYS

SUBMITTED October 8 2013  
John P. Peterson Jr.  
 DEPUTY DIRECTOR OF HIGHWAYS, REGION ENGINEER

Dec 6 2013  
John D. Baranzelli, P.E.  
 ENGINEER OF DESIGN AND ENVIRONMENT

Dec 6 2013  
Omer Osman, P.E.  
 DIRECTOR OF HIGHWAYS, CHIEF ENGINEER

**PRINTED BY THE AUTHORITY  
 OF THE STATE OF ILLINOIS**

DISTRICT ONE - DESIGN  
 PROJECT MANAGER: ISAAC KWARTENG (847) 705-4230  
 PROJECT ENGINEER: ALIX BRICE (847) 705-4552  
 CONTRACT NO. 60L73

GROSS & NET LENGTH OF PROJECT = 1,983 FT. = 0.37 MILES

GANDHI AND ASSOCIATES, INC.  
 ENGINEERS AND PLANNERS  
 6035 N. NORTHWEST HIGHWAY, SUITE 306  
 CHICAGO, IL 60631  
 (773) 774-5910

SIGNATURE: [Signature]  
 DATE: 12-7-2013  
 IL LICENSE NO. 062-034993  
 EXP. DATE: NOVEMBER 30, 2013  
 FIELD: GANDHI AND ASSOCIATES, INC.  
 TRAFFIC SIGNALS/ROADWAY LIGHTING  
 (SHEETS 74 TO 114)

JAMES J. BENES & ASSOCIATES  
 CONSULTING ENGINEERS  
 950 WARRENVILLE ROAD, SUITE 101  
 LISLE, IL 60532  
 (630) 719-7870

SIGNATURE: [Signature]  
 DATE: 10/17/2013  
 IL LICENSE NO. 062-045065  
 EXP. DATE: NOVEMBER 30, 2013  
 FIELD: JAMES J. BENES AND ASSOCIATES, INC.  
 CIVIL ENGINEERING  
 (SHEETS 1 TO 73 AND 115 TO 152)

Rev. 12-30-13

**INDEX OF SHEETS**

1	COVER SHEET
2	INDEX OF SHEETS, LIST OF STATE STANDARDS AND GENERAL NOTES
3 - 8F	SUMMARY OF QUANTITIES
9	EXISTING TYPICAL SECTIONS
10 - 11	PROPOSED TYPICAL SECTIONS
12 - 14	SCHEDULES OF QUANTITIES
15	ALIGNMENT, CURVE DATA AND BENCH MARKS
16	CONTROL POINTS AND TIES
17 - 18	PLAN AND PROFILE - US RTE 12/20/45
19 - 20	PLAN AND PROFILE - JOLIET ROAD
21 - 31	SUGGESTED STAGES OF CONSTRUCTION/MAINTENANCE OF TRAFFIC
32 - 41	EROSION CONTROL AND SEDIMENT CONTROL PLAN
42 - 43	DRAINAGE AND UTILITY PLANS - US RTE 12/20/45
44 - 45	DRAINAGE AND UTILITY PLANS - JOLIET ROAD
46	DRAINAGE AND UTILITY PIPE AND STRUCTURE TABLES
47 - 50	SUE UTILITY PLANS
51 - 68	RIGHT-OF-WAY SHEETS
69	INTERSECTION JOINTING DETAILS
70 - 71	PAVEMENT MARKING AND SIGNAGE PLANS
72 - 73	LANDSCAPE PLANS
74 - 113B	PROPOSED TRAFFIC SIGNAL PLANS AND DETAILS
114	LIGHTING REMOVAL PLANS
115	CONSTRUCTION DETAILS
116 - 129	DISTRICT DETAILS
130 - 140	CROSS SECTIONS - US RTE 12/20/45
141 - 152	CROSS SECTIONS - JOLIET ROAD

**COMMITMENTS: NONE**

**LIST OF STATE STANDARDS**

000001-06	STANDARD SYMBOLS, ABBREVIATIONS, AND PATTERNS
280001-07	TEMPORARY EROSION CONTROL SYSTEMS
424001-07	PERPENDICULAR CURB RAMPS FOR SIDEWALKS
424006-01	DIAGONAL CURB RAMPS FOR SIDEWALKS
442201-03	CLASS C AND D PATCHES
542606-02	REINFORCED CONCRETE PIPE TEE
602001-02	CATCH BASIN, TYPE A
602011-02	CATCH BASIN, TYPE C
602301-04	INLET, TYPE A
602401-03	MANHOLE, TYPE A
602601-03	PRECAST REINFORCED CONCRETE FLAT SLAB TOP
602701-02	MANHOLE STEPS
604001-03	FRAME AND LIDS TYPE 1
604006-04	FRAME AND GRATE TYPE 3
604036-02	GRATE TYPE 8
604091-02	FRAME AND GRATE TYPE 24
606001-05	CONCRETE CURB TYPE B AND COMBINATION CONCRETE CURB AND GUTTER
606301-04	PC CONCRETE ISLANDS AND MEDIANS
606306-03	CORRUGATED PC CONCRETE MEDIAN
635011-02	REFLECTOR MARKER AND MOUNTING DETAILS
701101-04	OFF-ROAD OPERATIONS, MULTILANE, 15'(4.5M) TO 24'(600MM) FROM PAVEMENT EDGE
701427-02	LANE CLOSURE, MULTILANE, INTERMITTENT OR MOVING OPER., FOR SPEEDS < 40 MPH
701601-09	URBAN LANE CLOSURE, MULTILANE, 1W OR 2W WITH NON TRAVERSABLE MEDIAN
701606-09	URBAN LANE CLOSURE, MULTILANE, 2W WITH MOUNTABLE MEDIAN
701701-09	URBAN LANE CLOSURE MULTILANE INTERSECTION
701801-05	SIDEWALK, CORNER OR CROSSWALK CLOSURE
701901-03	TRAFFIC CONTROL DEVICES
704001-07	TEMPORARY CONCRETE BARRIER
720001-01	SIGN PANEL MOUNTING DETAILS
720006-04	SIGN PANEL ERECTION DETAILS
720011-01	METAL POSTS FOR SIGNS, MARKERS & DELINEATORS
729001-01	APPLICATIONS OF TYPES A & B METAL POSTS (FOR SIGNS AND MARKERS)
780001-04	TYPICAL PAVEMENT MARKINGS
805001-01	ELECTRIC SERVICE INSTALLATION DETAILS
814001-02	CONCRETE HANDHOLES
814006-02	DOUBLE HANDHOLES
857001-01	STANDARD PHASE DESIGNATION DIAGRAMS AND PHASE SEQUENCES
862001-01	UNINTERRUPTABLE POWER SUPPLY (UPS)
873001-02	TRAFFIC SIGNAL GROUNDING AND BONDING
877001-05	STEEL MAST ARM ASSEMBLY AND POLE 16' THROUGH 55'
878001-09	CONCRETE FOUNDATION DETAILS
880001-01	SPAN WIRE MOUNTED SIGNALS AND FLASHING BEACON INSTALLATION
880006-01	TRAFFIC SIGNAL MOUNTING DETAILS
886001-01	DETECTOR LOOP INSTALLATIONS

**LIST OF DISTRICT ONE DETAILS**

BD-01	DRIVEWAY DETAILS - DISTANCE BETWEEN R.O.W. AND FACE OF CURB/EDGE OF SHOULDER >= 15' (4.5 m)
BD-02	DRIVEWAY DETAILS DISTANCE BETWEEN R.O.W. AND FACE < 15' (4.5 m)
BD-05	DETAILS FOR CONCRETE MEDIAN TYPE SB (DOWELLED) CORRUGATED MEDIAN (MODIFIED)
BD-07	DETAIL OF STORM SEWER CONNECTION TO EXISTING SEWER
BD-08	DETAILS FOR FRAMES AND LIDS ADJUSTED WITH MILLING
BD-32	BUTT JOINT AND HMA TAPER DETAILS
BD-36	FIRE HYDRANT TO BE MOVED
TC-10	TRAFFIC CONTROL AND PROTECTION FOR SIDE ROADS, INTERSECTIONS, AND DRIVEWAYS
TC-11	TYPICAL APPLICATIONS RAISED REFLECTIVE PAVEMENT MARKERS (SNOW-PLOW RESISTANT)
TC-13	DISTRICT ONE TYPICAL PAVEMENT MARKINGS
TC-14	TRAFFIC CONTROL AND PROTECTION AT TURN BAYS (TO REMAIN OPEN TO TRAFFIC)
TC-16	PAVEMENT MARKING LETTERS AND SYMBOLS FOR TRAFFIC STAGING
TC-22	ARTERIAL ROAD INFORMATION SIGN
TC-26	DRIVEWAY ENTRANCE SIGNING

**GENERAL NOTES**

- THE CONTRACTOR SHALL BE REQUIRED TO PROVIDE ACCESS TO ABUTTING PROPERTY AT ALL TIMES DURING THE CONSTRUCTION OF THE PROJECT.
- BEFORE STARTING ANY EXCAVATION, THE CONTRACTOR SHALL CALL "J.U.L.I.E." AT (800) 892-0123 FOR FIELD LOCATIONS OF BURIED ELECTRIC, TELEPHONE AND GAS UTILITIES. (48 HOUR NOTIFICATION IS REQUIRED.)
- THE CONTRACTOR SHALL COORDINATE ALL CONSTRUCTION ACTIVITIES WITH ALL UTILITY COMPANIES AND THE CITY OF COUNTRYSIDE AND VILLAGE OF HODGKINS.
- THE CONTRACTOR WILL NOT BE ALLOWED TO SET UP A YARD OR FIELD OFFICE ON STATE PROPERTY WITHOUT WRITTEN PERMISSION FROM THE ILLINOIS DEPARTMENT OF TRANSPORTATION.
- WHEN ARTIFICIAL LIGHTING IS UTILIZED IN NIGHT OPERATIONS, THE CONTRACTOR SHALL EXERCISE THE UTMOST PRECAUTION IN PREVENTING ADVERSE AFFECTS TO THE VISIBILITY OF THE MOTORING PUBLIC AS WELL AS THE ADJOINING RESIDENTIAL AREAS.
- TEN (10) FOOT LONG TRANSITIONS SHALL BE USED TO MATCH PROPOSED CURB AND GUTTER, SHOULDER AND MEDIAN ITEMS OF WORK TO EXISTING CURB AND GUTTER AND MEDIAN, UNLESS OTHERWISE SHOWN ON THE PLANS. THE TRANSITIONS SHALL BE PAID FOR AT THE CONTRACT UNIT PRICE FOR THE PROPOSED ITEMS OF WORK SPECIFIED.
- WHEN MILLED PAVEMENT IS OPEN TO TRAFFIC, THE MAXIMUM GRADE DIFFERENTIAL BETWEEN PASSES OF THE MILLING MACHINE SHALL NOT EXCEED 1/2 INCHES WHERE THE SPEED LIMIT IS 45 MPH. WITH WRITTEN APPROVAL FROM THE ENGINEER, A MAXIMUM GRADE DIFFERENTIAL OF 3 INCHES MAY BE ALLOWED IF THE EDGE OF THE MILLING IS SLOPED A MINIMUM 1:3 (V:H).
- BUTT JOINTS WILL BE INSTALLED AT THE ENDS OF ALL RESURFACING (WHERE RESURFACING MEETS EXISTING PAVEMENT), IN ACCORDANCE WITH THE "BUTT JOINT AND BITUMINOUS TAPER DETAILS" SHEET INCLUDED IN THE PLANS, UNLESS OTHERWISE SPECIFIED.
- SAW CUTTING OF PAVEMENTS, SHOULDERS, ETC. SHALL BE TO FULL DEPTH AND SHALL RESULT IN CLEAN, STRAIGHT EDGE ON THE PORTION REMAINING. ALL SAW CUTTING SHALL BE CONSIDERED INCLUDED IN THE COST OF THE ITEM REMOVED.
- STATIONING FOR ALL DRAINAGE STRUCTURES ARE GIVEN TO THE CENTER OF THE DRAINAGE STRUCTURE. OFFSETS FOR CURB LINE INLETS AND CATCH BASINS ARE GIVEN TO THE EDGE OF PAVEMENT. OFFSETS FOR ALL OTHER DRAINAGE STRUCTURES ARE GIVEN TO THE CENTER OF THE STRUCTURE. THE CONTRACTOR SHALL TAKE CARE TO ENSURE THAT ALL CURB LINE DRAINAGE STRUCTURES ARE PROPERLY ALIGNED WITH THE PROPOSED CURB AND GUTTER.
- THE CONTRACTOR SHALL CONTACT THE DISTRICT TRAFFIC CONTROL SUPERVISOR AT (847) 705-4470 A MINIMUM OF 72 HOURS IN ADVANCE OF ANY WORK.
- THE ENGINEER SHALL CONTACT JERNARD PERKINS, AREA TRAFFIC FIELD TECHNICIAN, AT (708) 524-2145 A MINIMUM OF TWO (2) WEEKS PRIOR TO THE PLACEMENT OF PERMANENT PAVEMENT MARKINGS.
- BEFORE BEGINNING ANY WORK, THE CONTRACTOR SHALL RETAIN AND RECORD FOR FUTURE REFERENCE, ALL EXISTING PAVEMENT MARKING LINES AND RAISED REFLECTIVE PAVEMENT MARKERS IN ORDER THAT THESE LOCATIONS CAN BE RE-ESTABLISHED FOR STRIPING. EXACT LOCATIONS OF ALL PAVEMENT MARKINGS SHALL BE AS DIRECTED BY THE ENGINEER.
- ALL DAMAGE TO EXISTING PAVEMENT MARKINGS OR RAISED REFLECTIVE PAVEMENT MARKINGS OUTSIDE THE REMOVAL LINE SHOWN ON THE PLANS, AND CAUSED BY THE CONTRACTOR'S NEGLIGENCE, SHALL BE REPLACED AT NO ADDITIONAL COST TO THE DEPARTMENT.
- DOUBLE LANE MAKERS ARE TO BE USED AS SHOWN ON THE DISTRICT ONE DETAIL "TYPICAL APPLICATION-RAISED REFLECTIVE PAVEMENT MARKERS (SNOW-PLOW RESISTANT)" SHOWN IN THE PLANS.
- ALL PAVEMENT PATCHING LOCATIONS WILL BE DETERMINED IN THE FIELD BY THE ENGINEER.
- IT SHALL BE THE CONTRACTOR'S RESPONSIBILITY TO VERIFY ALL DIMENSIONS AND CONDITIONS EXISTING IN THE FIELD PRIOR TO CONSTRUCTION AND ORDERING OF MATERIALS.
- FRAMES AND GRATES ADJUSTMENT OF PRIVATE UTILITIES WITHIN THE PROJECT LIMITS SHALL BE PERFORMED BY THEIR RESPECTIVE OWNERS AND ARE NOT PART OF THIS CONTRACT.
- DO NOT SCALE PLANS FOR CONSTRUCTION DIMENSIONS.
- ALL PIPE UNDERDRAINS SHALL BE PLACED AT A DEPTH OF 30" BELOW THE TOP OF THE PROPOSED PAVEMENT OR AS DEEP AS POSSIBLE AND IN ACCORDANCE WITH CHECK SHEET #19 OF THE SUPPLEMENTAL SPECIFICATIONS AND RECURRING SPECIAL PROVISIONS.
- FOR WORK OUTSIDE THE LIMITS OF BRIDGE APPROACH PAVEMENT, ALL REFERENCES IN THE HIGHWAY STANDARDS AND STANDARD SPECIFICATIONS FOR REINFORCEMENT, DOWEL BARS AND TIE BARS IN PAVEMENT, SHOULDERS, CURB, GUTTER, COMBINATION CURB AND GUTTER AND MEDIAN, AND CHAIR SUPPORTS FOR CRC PAVEMENT, SHALL BE EPOXY COATED, UNLESS NOTED ON THE PLAN.
- THIS PROJECT MUST COMPLY WITH N.P.D.E.S. REGULATIONS. SEE EROSION AND SEDIMENT CONTROL PLAN FOR PROJECT SPECIFICATIONS.

FILE NAME *	USER NAME * #USER#	DESIGNED - BDH	REVISED - ADDENDUM NO. 1 12/17/2015	STATE OF ILLINOIS DEPARTMENT OF TRANSPORTATION		GENERAL NOTES, INDEX OF SHEETS AND STATE STANDARDS		F.A.P. RTE.	SECTION	COUNTY	TOTAL SHEETS	SHEET NO.
#FILE#		DRAWN - BCD	REVISED -					330	2010-082-1	COOK	192	2
		CHECKED - BDH	REVISED -					CONTRACT NO. 60L73		ILLINOIS FED. AID PROJECT		
		DATE - 10-16-13	REVISED -			SCALE: N/A	SHEET NO. OF SHEETS STA.	TO STA.				

⊙ - DENOTES SPECIALTY ITEMS

△ - 0042 COST CODE

SUMMARY OF QUANTITIES

CODE NO.	ITEM	UNIT	URBAN TOTAL QUANTITY	CONSTRUCTION TYPE CODES													
				ROADWAY	TRAFFIC SIGNALS US 12/20/45 @ JOLIET RD	TRAFFIC SIGNALS US 12/20/45 @ 63RD STREET	TRAFFIC SIGNALS US 12/20/45 @ COUNTRYSIDE	TRAFFIC SIGNALS JOLIET ROAD @ QUARRY	US 12/20/45 @ JOLIET RD PRE-EMPTION EQUIPMENT	TRAFFIC SIGNAL INTERCONNECT	LIGHTING	UTILITIES	UTILITIES	SIDEWALK			
				80% FED 20% STATE 0004	80% FED 10% STATE 10% COUNTRYSIDE 0021	80% FED 20% STATE 0021	80% FED 20% STATE 0021	80% FED 20% STATE 0021	100% COUNTRYSIDE 0021	80% FED 20% STATE 0021	100% COUNTRYSIDE 0021	100% COUNTRYSIDE 0043	100% S. LYONS TOWN SAN DISTRICT 0043	80% FED 20% COUNTRYSIDE 0021			
70300250	TEMPORARY PAVEMENT MARKING - LINE 8"	FOOT	68	68													
70300260	TEMPORARY PAVEMENT MARKING - LINE 12"	FOOT	194	194													
70300280	TEMPORARY PAVEMENT MARKING - LINE 24"	FOOT	655	655													
70301000	WORK ZONE PAVEMENT MARKING REMOVAL	SO FT	25,041	25,041													
70400100	TEMPORARY CONCRETE BARRIER	FOOT	220	220													
70600250	IMPACT ATTENUATORS, TEMPORARY (NON- REDIRECTIVE), TEST LEVEL 3	EACH	3	3													
72000100	SIGN PANEL - TYPE 1	SO FT	376.5	356.5	20	△											
72000200	SIGN PANEL - TYPE 2	SO FT	37.5		37.5												
<del>72900200</del>	<del>METAL POST - TYPE B</del>	<del>FOOT</del>	<del>475</del>	<del>475</del>		△											
78000100	THERMOPLASTIC PAVEMENT MARKING - LETTERS AND SYMBOLS	SO FT	1,487	1,487													
78000200	THERMOPLASTIC PAVEMENT MARKING - LINE 4"	FOOT	25,773	25,773													
78000400	THERMOPLASTIC PAVEMENT MARKING - LINE 6"	FOOT	6,207	6,207													
78000500	THERMOPLASTIC PAVEMENT MARKING - LINE 8"	FOOT	102	102													
78000600	THERMOPLASTIC PAVEMENT MARKING - LINE 12"	FOOT	549	549													
78000650	THERMOPLASTIC PAVEMENT MARKING - LINE 24"	FOOT	462	462													
78100100	RAISED REFLECTIVE PAVEMENT MARKER	EACH	427	427													
78100200	TEMPORARY RAISED REFLECTIVE PAVEMENT MARKER	EACH	153	153													
78200530	BARRIER WALL MARKERS, TYPE C	EACH	22	22													
78300100	PAVEMENT MARKING REMOVAL	SO FT	3,899	3,899													

△ Rev. 12-30-13

● - DENOTES SPECIALTY ITEMS

△ - 0042 COST CODE

SUMMARY OF QUANTITIES

CODE NO.	ITEM	UNIT	TOTAL QUANTITY	CONSTRUCTION TYPE CODES												
				ROADWAY	TRAFFIC SIGNALS US 12/20/45 JOLIET RD	TRAFFIC SIGNALS US 12/20/45 63RD STREET	TRAFFIC SIGNALS US 12/20/45 COUNTRYSIDE	TRAFFIC SIGNALS JOLIET ROAD QUARRY	US 12/20/45 JOLIET RD PRE-EMPTION EQUIPMENT	TRAFFIC SIGNAL INTERCONNECT	LIGHTING	UTILITIES	UTILITIES	SIDEWALK		
				80% FED 20% STATE 0004	80% FED 10% STATE 10% COUNTRYSIDE 0021	80% FED 20% STATE 0021	80% FED 20% STATE 0021	80% FED 20% STATE 0021	100% COUNTRYSIDE 0021	80% FED 20% STATE 0021	100% COUNTRYSIDE 0021	100% COUNTRYSIDE 0043	100% S. LYONS TOWN SAN DISTRICT 0043	80% FED 20% COUNTRYSIDE 0021		
78300200	RAISED REFLECTIVE PAVEMENT MARKER REMOVAL	EACH	427	427												
80500020	SERVICE INSTALLATION - POLE MOUNTED	EACH	1		1											
81028200	UNDERGROUND CONDUIT, GALVANIZED STEEL, 2" DIA.	FOOT	3,953		1,534					2,419						
81028210	UNDERGROUND CONDUIT, GALVANIZED STEEL, 2 1/2" DIA.	FOOT	69		69											
81028220	UNDERGROUND CONDUIT, GALVANIZED STEEL, 3" DIA.	FOOT	39		39											
81028240	UNDERGROUND CONDUIT, GALVANIZED STEEL, 4" DIA.	FOOT	651		651											
81400100	HANDHOLE	EACH	9		7					2						
81400200	HEAVY-DUTY HANDHOLE	EACH	4		4											
81400300	DOUBLE HANDHOLE	EACH	2		2											
84100110	REMOVAL OF TEMPORARY LIGHTING UNIT	EACH	3								3					
84200500	REMOVAL OF LIGHTING UNIT, SALVAGE	EACH	4								4					
84200804	REMOVAL OF POLE FOUNDATION	EACH	4								4					
85000200	MAINTENANCE OF EXISTING TRAFFIC SIGNAL INSTALLATION	EACH	4								4					
86400100	TRANSCEIVER-FIBER OPTIC	EACH	1		1											
87300925	ELECTRIC CABLE IN CONDUIT, TRACER NO. 14 1C	FOOT	6,994							6,994						
87301215	ELECTRIC CABLE IN CONDUIT, SIGNAL NO. 14 2C	FOOT	1,418		1,418											
87301225	ELECTRIC CABLE IN CONDUIT, SIGNAL NO. 14 3C	FOOT	3018		3018											
87301245	ELECTRIC CABLE IN CONDUIT, SIGNAL NO. 14 5C	FOOT	2,442		2,442											
87301255	ELECTRIC CABLE IN CONDUIT, SIGNAL NO. 14 7C	FOOT	2,741		2,741											

Rev. 12-30-13



⊕ - DENOTES SPECIALTY ITEMS

SUMMARY OF QUANTITIES

CODE NO.	ITEM	UNIT	TOTAL QUANTITY	CONSTRUCTION TYPE CODES													
				ROADWAY	TRAFFIC SIGNALS US 12/20/45 @ JOLIET RD	TRAFFIC SIGNALS US 12/20/45 @ 63RD STREET	TRAFFIC SIGNALS US 12/20/45 COUNTRYSIDE	TRAFFIC SIGNALS JOLIET ROAD @ QUARRY	US 12/20/45 @ JOLIET RD PRE-EMPTION EQUIPMENT	TRAFFIC SIGNAL INTERCONNECT	LIGHTING	UTILITIES	UTILITIES	SIDEWALK			
				80% FED 20% STATE 0004	80% FED 10% STATE 10% COUNTRYSIDE 0021	80% FED 20% STATE 0021	80% FED 20% STATE 0021	80% FED 20% STATE 0021	100% COUNTRYSIDE 0021	80% FED 20% STATE 0021	100% COUNTRYSIDE 0021	100% COUNTRYSIDE 0043	100% S. LYONS TOWN SAN DISTRICT 0043	80% FED 20% COUNTRYSIDE 0021			
X8140115	HANDHOLE TO BE ADJUSTED	EACH	5	5													
X8140215	HEAVY-DUTY HANDHOLE TO BE ADJUSTED	EACH	2	2													
X8570226	FULL-ACTUATED CONTROLLER AND TYPE IV CABINET, SPECIAL	EACH	1		1												
X8620200	UNINTERRUPTIBLE POWER SUPPLY, SPECIAL	EACH	1		1												
X8710024	FIBER OPTIC CABLE IN CONDUIT, NO. 62.5/125, MM12F SM24F	FOOT	7,098							7,098							
87702729	STEEL MAST ARM ASSEMBLY AND POLE WITH DUAL MAST ARMS, 48 FT. AND 54 FT.	EACH	1		1												
10056606	STORM SEWER (WATER MAIN REQUIREMENTS) 10 INCH	FOOT	484	484													
⊕ X8910050	ILLUMINATED SIGN SPECIAL	EACH	4		** 4												
54215985	REINFORCED CONCRETE PIPE ELBOW 30"	EACH	1	1													
∅ 10076600	TRAINEES	HOUR	1500	1500													
X16061122	CONCRETE MEDIAN, TYPE SB-6 (DOWELLED)	SQ FT	6,510	6,510													
∅ 10076604	TRAINEES - TRAINING PROGRAM GRADUATE	HOUR	1500	1500													

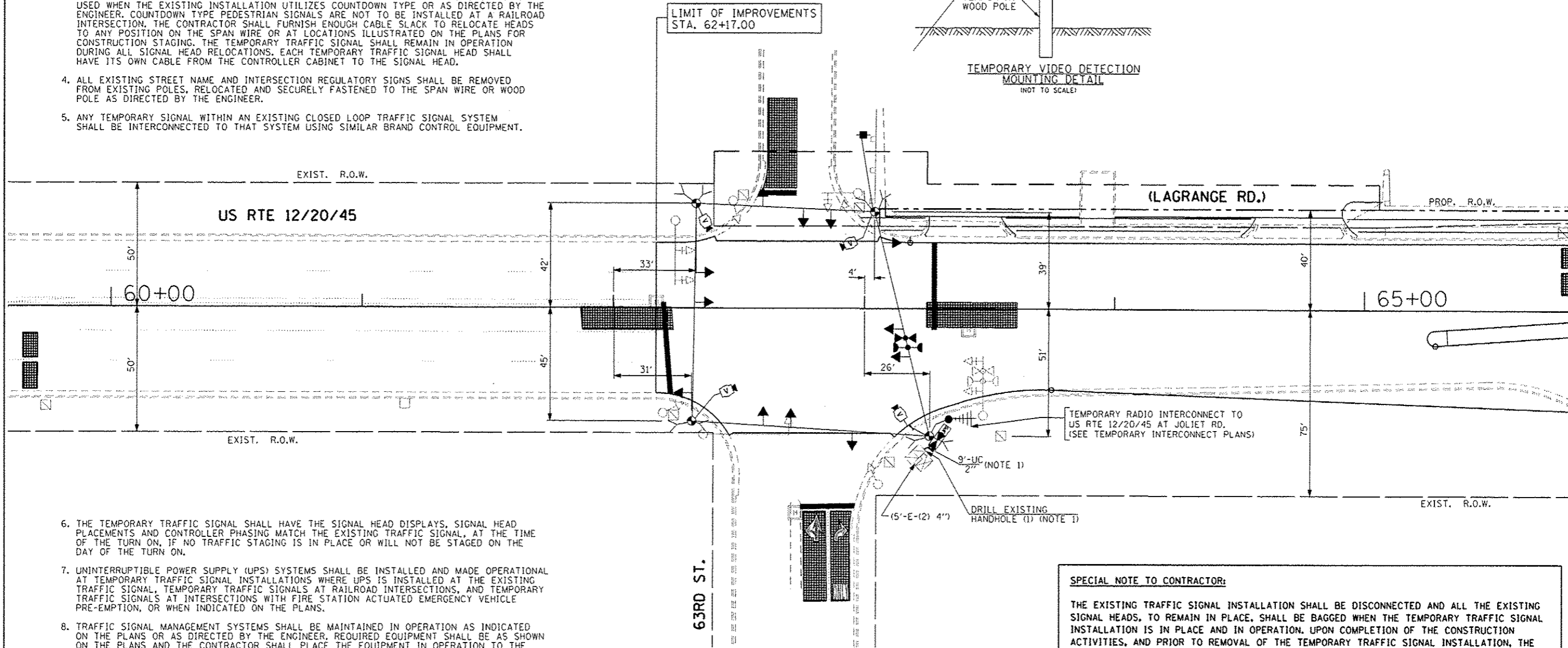
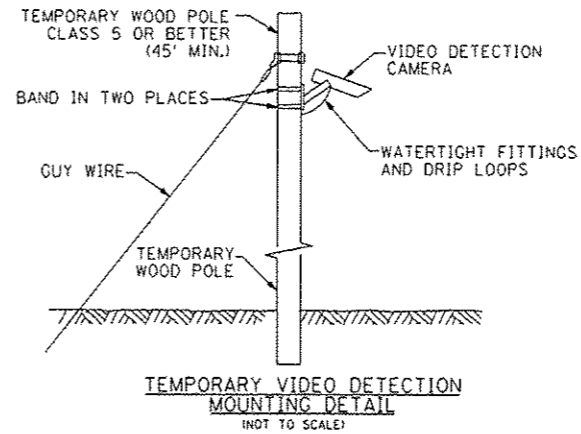
∅ 0042

⚠ \*\* 3 EACH - 100% COUNTRYSIDE 07POL 03 0021  
 1 EACH - 100% HODGKINS 07POL 04 0021

⚠ Rev. 12-30-13

NOTES FOR TEMPORARY TRAFFIC SIGNALS

1. ALL CONTROL EQUIPMENT INCLUDING EMERGENCY PRE-EMPTION AND COMMUNICATION DEVICES FOR THE TEMPORARY TRAFFIC SIGNAL(S) SHALL BE FURNISHED BY THE CONTRACTOR.
2. ONLY CONTROLLERS SUPPLIED BY ONE OF THE DISTRICT APPROVED CLOSED LOOP EQUIPMENT MANUFACTURERS WILL BE APPROVED FOR USE AT TEMPORARY SIGNAL LOCATIONS. ALL CONTROLLERS USED FOR TEMPORARY TRAFFIC SIGNALS SHALL BE FULLY ACTUATED NEMA MICROPROCESSOR BASED WITH RS232 DATA ENTRY PORTS COMPATIBLE WITH EXISTING MONITORING SOFTWARE APPROVED BY IDOT DISTRICT 1, INSTALLED IN A NEMA TS2 CABINET. ONLY ONE BRAND OF CONTROLLER WILL BE ACCEPTED FOR ANY ONE CONTRACT.
3. ALL TRAFFIC SIGNAL SECTIONS AND PEDESTRIAN SIGNAL SECTIONS SHALL BE LED AND 12" (300mm) DIAMETER. HEADS SHALL BE PLACED AS INDICATED ON THE TEMPORARY TRAFFIC SIGNAL PLAN OR AS DIRECTED BY THE ENGINEER. PEDESTRIAN SIGNALS SHALL INCLUDE SOLID INTERNATIONAL SYMBOLS. PEDESTRIAN SIGNALS WITH COUNTDOWN TIMERS SHALL BE USED WHEN THE EXISTING INSTALLATION UTILIZES COUNTDOWN TYPE OR AS DIRECTED BY THE ENGINEER. COUNTDOWN TYPE PEDESTRIAN SIGNALS ARE NOT TO BE INSTALLED AT A RAILROAD INTERSECTION. THE CONTRACTOR SHALL FURNISH ENOUGH CABLE SLACK TO RELOCATE HEADS TO ANY POSITION ON THE SPAN WIRE OR AT LOCATIONS ILLUSTRATED ON THE PLANS FOR CONSTRUCTION STAGING. THE TEMPORARY TRAFFIC SIGNAL SHALL REMAIN IN OPERATION DURING ALL SIGNAL HEAD RELOCATIONS. EACH TEMPORARY TRAFFIC SIGNAL HEAD SHALL HAVE ITS OWN CABLE FROM THE CONTROLLER CABINET TO THE SIGNAL HEAD.
4. ALL EXISTING STREET NAME AND INTERSECTION REGULATORY SIGNS SHALL BE REMOVED FROM EXISTING POLES, RELOCATED AND SECURELY FASTENED TO THE SPAN WIRE OR WOOD POLE AS DIRECTED BY THE ENGINEER.
5. ANY TEMPORARY SIGNAL WITHIN AN EXISTING CLOSED LOOP TRAFFIC SIGNAL SYSTEM SHALL BE INTERCONNECTED TO THAT SYSTEM USING SIMILAR BRAND CONTROL EQUIPMENT.



6. THE TEMPORARY TRAFFIC SIGNAL SHALL HAVE THE SIGNAL HEAD DISPLAYS, SIGNAL HEAD PLACEMENTS AND CONTROLLER PHASING MATCH THE EXISTING TRAFFIC SIGNAL, AT THE TIME OF THE TURN ON, IF NO TRAFFIC STAGING IS IN PLACE OR WILL NOT BE STAGED ON THE DAY OF THE TURN ON.
7. UNINTERRUPTIBLE POWER SUPPLY (UPS) SYSTEMS SHALL BE INSTALLED AND MADE OPERATIONAL AT TEMPORARY TRAFFIC SIGNAL INSTALLATIONS WHERE UPS IS INSTALLED AT THE EXISTING TRAFFIC SIGNAL, TEMPORARY TRAFFIC SIGNALS AT RAILROAD INTERSECTIONS, AND TEMPORARY TRAFFIC SIGNALS AT INTERSECTIONS WITH FIRE STATION ACTUATED EMERGENCY VEHICLE PRE-EMPTION, OR WHEN INDICATED ON THE PLANS.
8. TRAFFIC SIGNAL MANAGEMENT SYSTEMS SHALL BE MAINTAINED IN OPERATION AS INDICATED ON THE PLANS OR AS DIRECTED BY THE ENGINEER. REQUIRED EQUIPMENT SHALL BE AS SHOWN ON THE PLANS AND THE CONTRACTOR SHALL PLACE THE EQUIPMENT IN OPERATION TO THE SATISFACTION OF THE ENGINEER AND THE AGENCY RESPONSIBLE FOR THE TRAFFIC SIGNAL MANAGEMENT SYSTEM.
9. DETECTION AT TEMPORARY TRAFFIC SIGNALS SHALL BE INCLUDED FOR ALL APPROACHES OF THE INTERSECTION UNLESS INDICATED OTHERWISE ON THE PLANS. THE DETECTION SYSTEM MUST MEET THE SPECIFICATIONS OF DISTRICT 1 AND THE CONTRACTOR SHALL PLACE THE DETECTORS INTO OPERATION TO THE SATISFACTION OF THE ENGINEER.
10. WHEN PAN, TILT, ZOOM CAMERAS ARE INSTALLED AT THE EXISTING INTERSECTION OR ARE CALLED FOR IN THE PLANS, THE CONTRACTOR SHALL BE RESPONSIBLE FOR INSTALLING AND MAINTAINING THE CAMERAS TO THE SATISFACTION OF THE ENGINEER AND THE AGENCY RESPONSIBLE FOR THE CAMERAS.

TEMPORARY TRAFFIC SIGNAL PLAN - PRE-STAGE

NOTE 1: INSTALL TEMPORARY INTERCONNECT CABLE NO. 62.5/125 MM12F SM12F BETWEEN THE EXISTING CONTROLLER CABINET AND THE TEMPORARY CONTROLLER CABINET, FOR THE PURPOSE OF MAINTAINING EXISTING INTERCONNECT SYSTEM. THIS WORK SHALL BE INCIDENTAL TO THE PAY ITEM "TEMPORARY TRAFFIC SIGNAL INSTALLATION".

NOTE 2: PRIOR TO CONSTRUCTION THE CONTRACTOR SHALL TEST FOR RADIO FREQUENCY INTERFERENCE PRIOR TO USING "RADIO INTERCONNECT"; A COPY OF RESULTS WILL BE PROVIDED TO THE BUREAU OF TRAFFIC OPERATIONS FOR RECORD.

SPECIAL NOTE TO CONTRACTOR:

THE EXISTING TRAFFIC SIGNAL INSTALLATION SHALL BE DISCONNECTED AND ALL THE EXISTING SIGNAL HEADS, TO REMAIN IN PLACE, SHALL BE BAGGED WHEN THE TEMPORARY TRAFFIC SIGNAL INSTALLATION IS IN PLACE AND IN OPERATION. UPON COMPLETION OF THE CONSTRUCTION ACTIVITIES, AND PRIOR TO REMOVAL OF THE TEMPORARY TRAFFIC SIGNAL INSTALLATION, THE EXISTING TRAFFIC SIGNAL HEADS SHALL BE UNBAGGED AND THE EXISTING TRAFFIC SIGNAL INSTALLATION SHALL BE MADE OPERATIONAL AS DIRECTED BY THE ENGINEER. THIS WORK SHALL NOT BE PAID FOR SEPARATELY BUT SHALL BE INCLUDED IN THE PAY ITEM "MAINTENANCE OF EXISTING TRAFFIC SIGNAL INSTALLATION".

THE TRAFFIC SIGNAL CONTROL EQUIPMENT FOR THIS PROJECT SHALL BE "EAGLE" TO MATCH THE EXISTING ADJACENT SYSTEM.

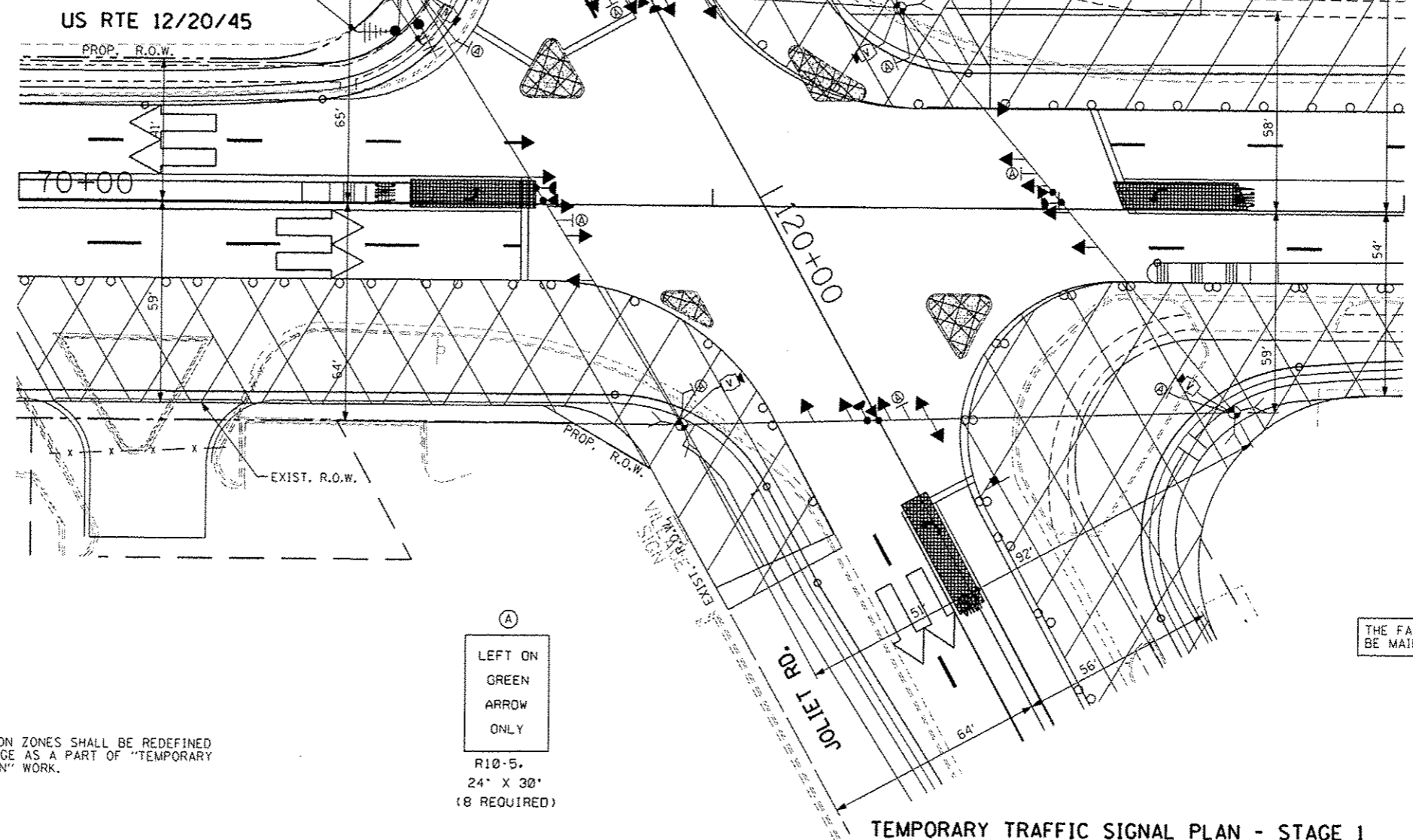
FILE NAME * #FILE#	USER NAME * #USER#	DESIGNED - PKG	REVISED - ADDENDUM NO. 8, 12/26/2013	STATE OF ILLINOIS DEPARTMENT OF TRANSPORTATION	TEMPORARY TRAFFIC SIGNAL INSTALLATION AND REMOVAL PLAN US RTE 12/20/45 (LAGRANGE RD.) AT 63RD STREET PRE-STAGE (SHEET 1 OF 4)	F.A.P. RTE.	SECTION	COUNTY	TOTAL SHEETS	SHEET NO.	
		DRAWN - MC, EA	REVISED -			330	2010-082-1	COOK	152	80	
		PLOT SCALE * #SCALE#	REVISED -			CONTRACT NO. 60L73					
		PLOT DATE * #DATE#	REVISED -			FED. ROAD DIST. NO. - ILLINOIS FED. AID PROJECT					

TEMPORARY RADIO INTERCONNECT TO JOLIET RD. AT BRAINARD AVE. (SEE TEMPORARY INTERCONNECT PLANS)

TEMPORARY RADIO INTERCONNECT TO US RTE 12/20/45 AT COUNTRYSIDE PLAZA (SEE TEMPORARY INTERCONNECT PLANS)

TEMPORARY RADIO INTERCONNECT TO JOLIET RD. AT QUARRY SHOPPING CENTER DRIVEWAY (SEE TEMPORARY INTERCONNECT PLANS)

TEMPORARY RADIO INTERCONNECT TO US RTE 12/20/45 AT 63RD STREET (SEE TEMPORARY INTERCONNECT PLANS)



NOTE 1: THE FAR OUT VIDEO DETECTION ZONES SHALL BE REDEFINED FOR EACH CONSTRUCTION STAGE AS A PART OF "TEMPORARY TRAFFIC SIGNAL INSTALLATION" WORK.

(A)  
LEFT ON GREEN ARROW ONLY  
R10-5.  
24" X 30"  
(8 REQUIRED)

THE FAR OUT VIDEO DETECTION ZONES WILL BE MAINTAINED AS SHOWN ON SHEET NO. 86

THE TRAFFIC SIGNAL CONTROL EQUIPMENT FOR THIS PROJECT SHALL BE "EAGLE" TO MATCH THE EXISTING ADJACENT SYSTEM.

TEMPORARY TRAFFIC SIGNAL PLAN - STAGE 1

FILE NAME * #FILE#	USER NAME * #USER#	DESIGNED - PKG	REVISED -	ADDENDUM NO. D, 12/26/2013	STATE OF ILLINOIS DEPARTMENT OF TRANSPORTATION		TEMPORARY TRAFFIC SIGNAL INSTALLATION PLAN US RTE 122045 (LAGRANGE RD.) AT JOLIET ROAD STAGE 1 (SHEET 3 OF 5)		F.A.P. R.T.E. 330	SECTION 2010-082-1	COUNTY COOK	TOTAL SHEETS 152	SHEET NO. 87
		DRAWN - MG, EA	REVISED -		SCALE: 1" = 20'	SHEET NO. OF SHEETS	STA. TO STA.	CONTRACT NO. 60L73 FED. ROAD DIST. NO. ILLINOIS FED. AID PROJECT					
		CHECKED - PKG	REVISED -										
		DATE - 12/11/2013	REVISED -										



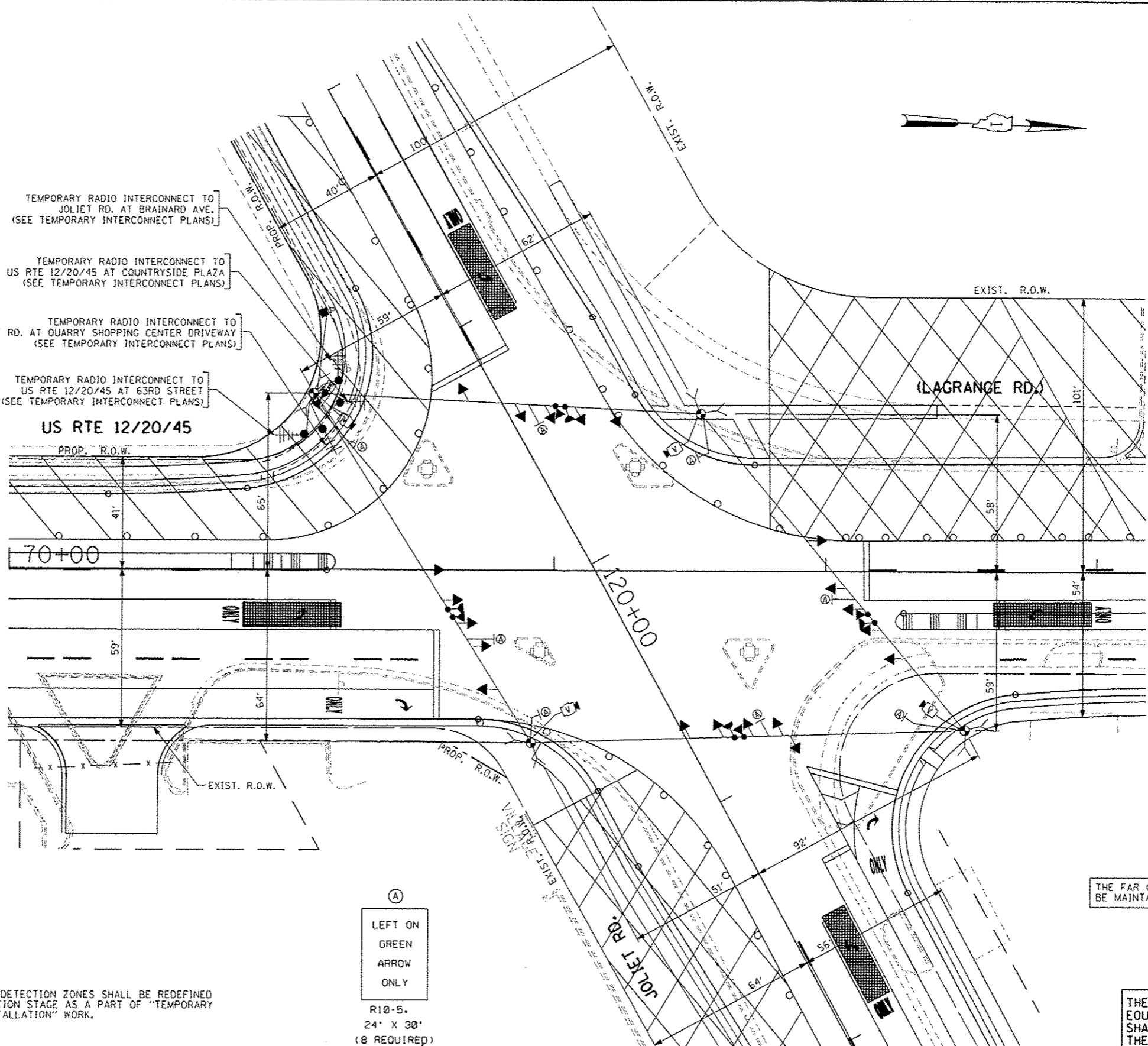
TEMPORARY RADIO INTERCONNECT TO JOLIET RD. AT BRAINARD AVE. (SEE TEMPORARY INTERCONNECT PLANS)

TEMPORARY RADIO INTERCONNECT TO US RTE 12/20/45 AT COUNTRYSIDE PLAZA (SEE TEMPORARY INTERCONNECT PLANS)

TEMPORARY RADIO INTERCONNECT TO JOLIET RD. AT QUARRY SHOPPING CENTER DRIVEWAY (SEE TEMPORARY INTERCONNECT PLANS)

TEMPORARY RADIO INTERCONNECT TO US RTE 12/20/45 AT 63RD STREET (SEE TEMPORARY INTERCONNECT PLANS)

**US RTE 12/20/45**



NOTE 1: THE FAR OUT VIDEO DETECTION ZONES SHALL BE REDEFINED FOR EACH CONSTRUCTION STAGE AS A PART OF "TEMPORARY TRAFFIC SIGNAL INSTALLATION" WORK.

(A)  
LEFT ON GREEN ARROW ONLY  
R10-5.  
24" X 30"  
(8 REQUIRED)

THE FAR OUT VIDEO DETECTION ZONES WILL BE MAINTAINED AS SHOWN ON SHEET NO. 86

THE TRAFFIC SIGNAL CONTROL EQUIPMENT FOR THIS PROJECT SHALL BE "EAGLE" TO MATCH THE EXISTING ADJACENT SYSTEM.

**TEMPORARY TRAFFIC SIGNAL PLAN - STAGE 2**

FILE NAME * #FILE#	USER NAME * #USER#	DESIGNED - PKG	REVISED - APPENDIX NO. 6, 12/26/2013	<b>STATE OF ILLINOIS DEPARTMENT OF TRANSPORTATION</b>	<b>TEMPORARY TRAFFIC SIGNAL INSTALLATION PLAN US RTE 12/20/45 (LAGRANGE RD.) AT JOLIET ROAD STAGE 2 (SHEET 4 OF 5)</b>			F.A.P. RTE. 330	SECTION 2010-082-1	COUNTY COOK	TOTAL SHEETS 152	SHEET NO. 88
		DRAWN - MG, EA	REVISED -		SCALE: 1" = 20'	SHEET NO. OF SHEETS	STA. TO STA.	FED. ROAD DIST. NO. - ILLINOIS FED. AID PROJECT				
		CHECKED - PKC	REVISED -					CONTRACT NO. 60L73				
		DATE - 12/11/2013	REVISED -									

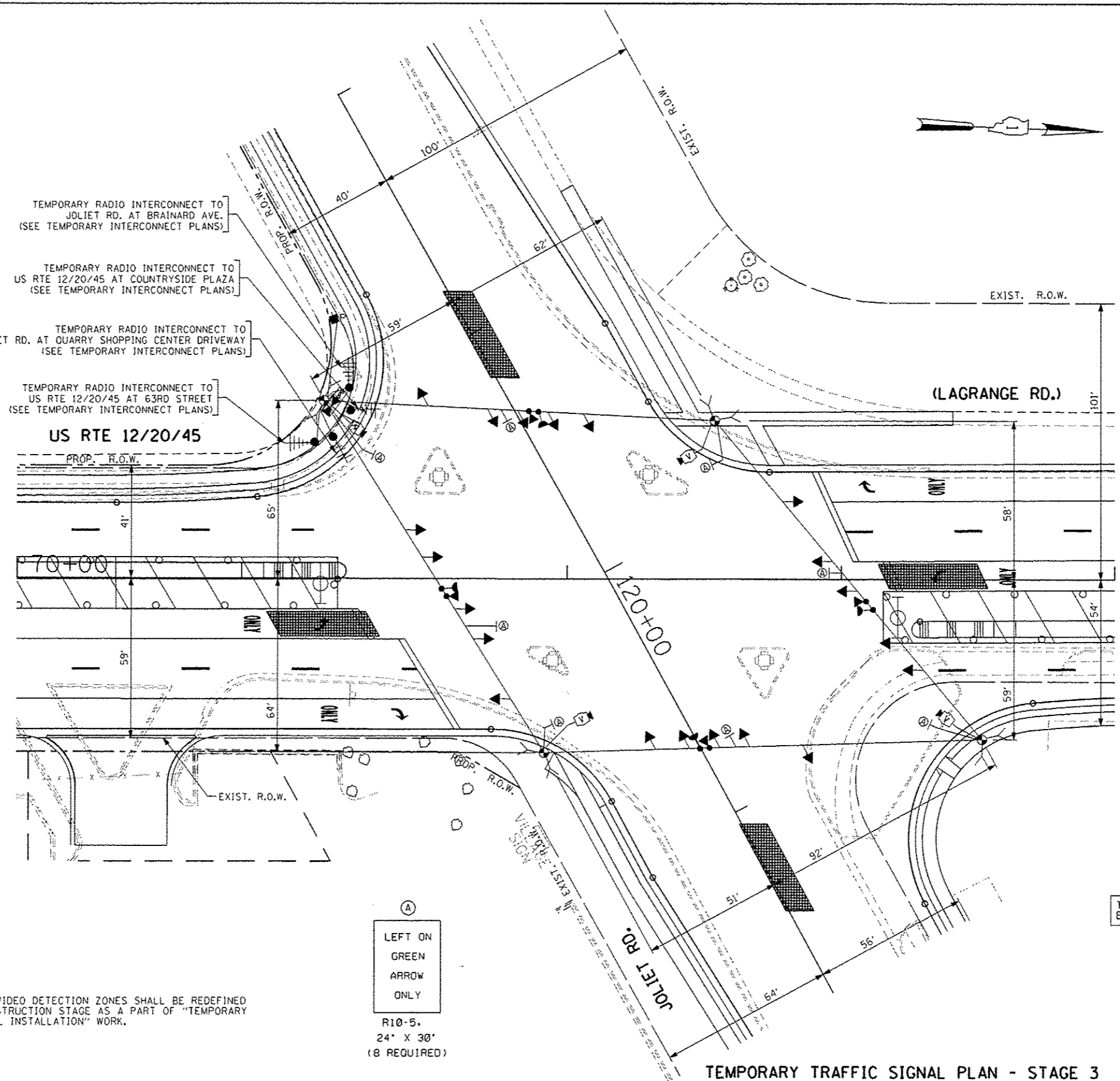
TEMPORARY RADIO INTERCONNECT TO JOLIET RD. AT BRAINARD AVE. (SEE TEMPORARY INTERCONNECT PLANS)

TEMPORARY RADIO INTERCONNECT TO US RTE 12/20/45 AT COUNTRYSIDE PLAZA (SEE TEMPORARY INTERCONNECT PLANS)

TEMPORARY RADIO INTERCONNECT TO JOLIET RD. AT QUARRY SHOPPING CENTER DRIVEWAY (SEE TEMPORARY INTERCONNECT PLANS)

TEMPORARY RADIO INTERCONNECT TO US RTE 12/20/45 AT 63RD STREET (SEE TEMPORARY INTERCONNECT PLANS)

**US RTE 12/20/45**



NOTE 1: THE FAR OUT VIDEO DETECTION ZONES SHALL BE REDEFINED FOR EACH CONSTRUCTION STAGE AS A PART OF "TEMPORARY TRAFFIC SIGNAL INSTALLATION" WORK.

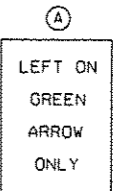
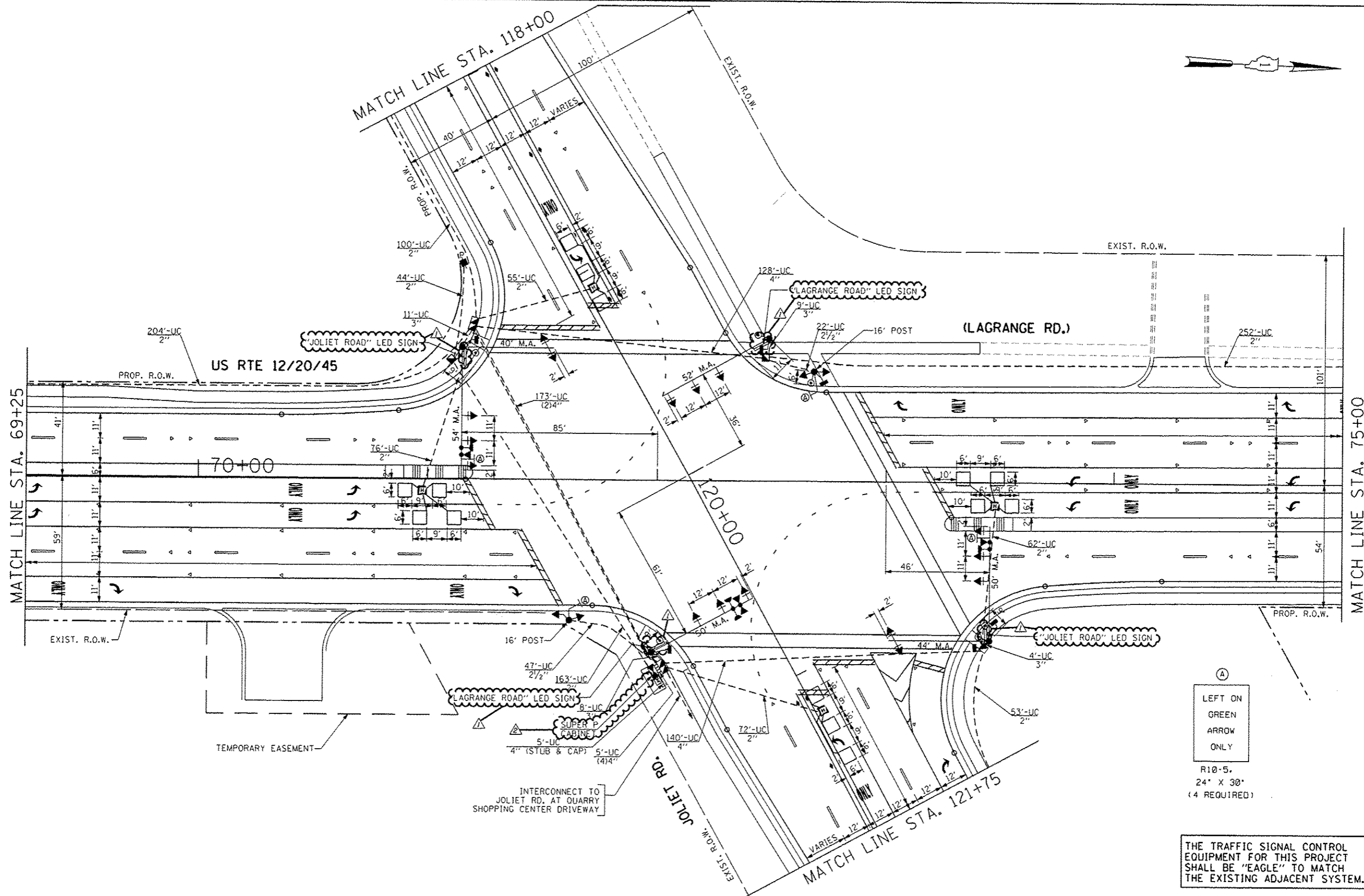
(A)  
LEFT ON GREEN ARROW ONLY  
R10-5.  
24" X 30"  
(8 REQUIRED)

THE FAR OUT VIDEO DETECTION ZONES WILL BE MAINTAINED AS SHOWN ON SHEET NO. 86

THE TRAFFIC SIGNAL CONTROL EQUIPMENT FOR THIS PROJECT SHALL BE "EAGLE" TO MATCH THE EXISTING ADJACENT SYSTEM.

**TEMPORARY TRAFFIC SIGNAL PLAN - STAGE 3**

FILE NAME * #FILEL*	USER NAME * #USER#	DESIGNED - PKG	REVISED -	STATE OF ILLINOIS DEPARTMENT OF TRANSPORTATION	TEMPORARY TRAFFIC SIGNAL INSTALLATION PLAN US RTE 12/20/45 (LAGRANGE RD.) AT JOLIET ROAD STAGE 3 (SHEET 5 OF 5)	F.A.P. RTE.	SECTION	COUNTY	TOTAL SHEETS	SHEET NO.
	PLOT SCALE * #SCALE#	CHECKED - PKG	REVISED -			330	2010-082-1	COOK	152	89
PLOT DATE * #DATE#	DATE - 12/11/2013	DATE - 12/11/2013	REVISED -	SCALE: 1" = 20'	SHEET NO. OF SHEETS STA. TO STA.	FED. ROAD DIST. NO. ILLINOIS FED. AID PROJECT CONTRACT NO. 60L73				



R10-5.  
24" X 30"  
(4 REQUIRED)

THE TRAFFIC SIGNAL CONTROL EQUIPMENT FOR THIS PROJECT SHALL BE "EAGLE" TO MATCH THE EXISTING ADJACENT SYSTEM.

FILE NAME * #FILE#	USER NAME * #USER#	DESIGNED - PKG	REVISED - ADDENDUM NO. 1, 12/17/2013	<b>STATE OF ILLINOIS DEPARTMENT OF TRANSPORTATION</b>	<b>TRAFFIC SIGNAL INSTALLATION PLAN US RTE 122045 (LAGRANGE RD.) AT JOLIET ROAD (SHEET 1 OF 2)</b>			F.A.P. RTE. 330	SECTION 2010-082-1	COUNTY COOK	TOTAL SHEETS 152	SHEET NO. 91
		DRAWN - MG, EA	REVISED - ADDENDUM NO. 2, 12/26/2013		SCALE: 1" = 20'	SHEET NO. OF SHEETS	STA. TO STA.	FED. ROAD DIST. NO. ILLINOIS FED. AID PROJECT				
		CHECKED - PKG	REVISED					CONTRACT NO. 60L73				
		DATE - 12/11/2013	REVISED									

THE END OF THE TRACER CABLE SHALL BE CONTINUOUS AND EXTEND INTO THE CONTROLLER CABINET.

TRACER CABLE NO. 14.17C

INTERSECTION AND SAMPLING (SYSTEM) DETECTORS

INTERCONNECT TO BRAINARD AVE.

INTERCONNECT TO 63RD ST

TRACER CABLE NO. 14.17C

THE END OF THE TRACER CABLE SHALL BE CONTINUOUS AND EXTEND INTO THE CONTROLLER CABINET.



US RTE 12/20/45

(LAGRANGE RD.)

INTERCONNECT TO COUNTRYSIDE PLAZA

THE END OF THE TRACER CABLE SHALL BE CONTINUOUS AND EXTEND INTO THE CONTROLLER CABINET.

TRACER CABLE NO. 14.17C

INTERSECTION AND SAMPLING (SYSTEM) DETECTORS

INTERSECTION AND SAMPLING (SYSTEM) DETECTORS

INTERCONNECT TO QUARRY SHOPPING CENTER DRIVEWAY

TRACER CABLE NO. 14.17C

THE END OF THE TRACER CABLE SHALL BE CONTINUOUS AND EXTEND INTO THE CONTROLLER CABINET.

CABLE PLAN (NOT TO SCALE)

THE TRAFFIC SIGNAL CONTROL EQUIPMENT FOR THIS PROJECT SHALL BE "EAGLE" TO MATCH THE EXISTING ADJACENT SYSTEM.

I.D.O.T. TRAFFIC SIGNAL INSTALLATION ELECTRICAL SERVICE REQUIREMENTS					TOTAL WATTAGE
TYPE	NO LAMPS	WATTAGE	%OPERATION		
SIGNAL (RED)	20	135	17	0.50	170
(YELLOW)	20	135	25	0.25	125
(GREEN)	20	135	15	0.25	75
ARROW	20	135	12	0.10	24
PED. SIGNAL	6	90	25	1.00	150
CONTROLLER		100	100	1.00	100
ILLUM. SIGN		105		0.33	138.6
VIDEO SYSTEM		150		1.00	
FLASHER				0.50	
ENERGY COSTS TO:				TOTAL =	782.6
CITY OF COUNTRYSIDE, ILLINOIS 5550 EAST AVENUE COUNTRYSIDE, ILLINOIS 60525					
ENERGY SUPPLY CONTACT: DOLORES KREMNIETZ PHONE: (815) 724-5241 COMPANY: COMMONWEALTH EDISON					

FILE NAME *	USER NAME * USER *	DESIGNED - PKG	REVISED - ADDENDUM NO. 1, 12/17/2013
*FILE#		DRAWN - MG, EA	REVISED - ADDENDUM NO. 8, 12/26/2013
	PLOT SCALE * #SCALE*	CHECKED - PKG	REVISED
	PLOT DATE * #DATE*	DATE - 12/11/2013	REVISED -

STATE OF ILLINOIS  
DEPARTMENT OF TRANSPORTATION

CABLE PLAN  
US RTE 122045 (LAGRANGE RD.) AT JOLIET ROAD  
(SHEET 1 OF 2)

F.A.P. RTE.	SECTION	COUNTY	TOTAL SHEETS	SHEET NO.
330	2010-082-1	COOK	152	93
CONTRACT NO. 60L73			FED. ROAD DIST. NO. ILLINOIS FED. AID PROJECT	

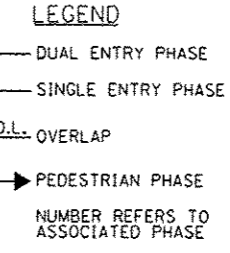
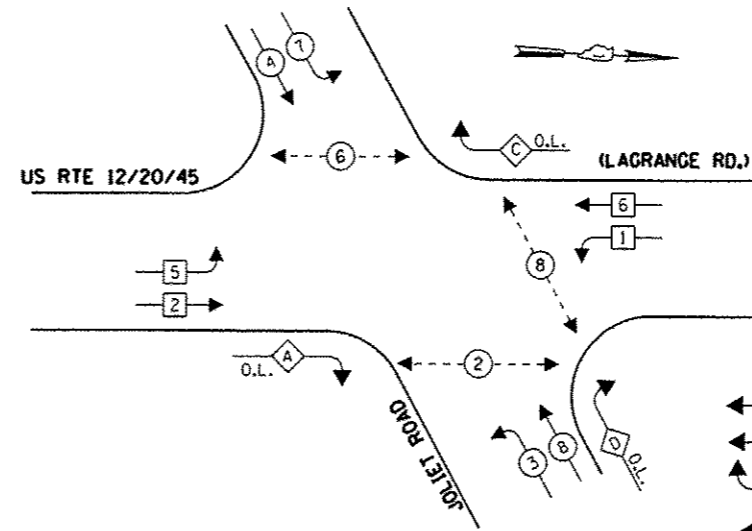
SCALE: N.T.S. SHEET NO. OF SHEETS STA. TO STA.

SCHEDULE OF QUANTITIES

QUANTITY	UNIT	ITEM
20	SO FT	SIGN PANEL, TYPE 1
1	EACH	SERVICE INSTALLATION - POLE MOUNTED
1534	FOOT	UNDERGROUND CONDUIT, GALVANIZED STEEL, 2" DIA.
69	FOOT	UNDERGROUND CONDUIT, GALVANIZED STEEL, 2 1/2" DIA.
39	FOOT	UNDERGROUND CONDUIT, GALVANIZED STEEL, 3" DIA.
651	FOOT	UNDERGROUND CONDUIT, GALVANIZED STEEL, 4" DIA.
7	EACH	HANDHOLE
4	EACH	HEAVY-DUTY HANDHOLE
2	EACH	DOUBLE HANDHOLE
1	EACH	TRANSCEIVER-FIBER OPTIC
1418	FOOT	ELECTRIC CABLE IN CONDUIT, SIGNAL NO. 14 2C
3018	FOOT	ELECTRIC CABLE IN CONDUIT, SIGNAL NO. 14 3C
2442	FOOT	ELECTRIC CABLE IN CONDUIT, SIGNAL NO. 14 5C
2741	FOOT	ELECTRIC CABLE IN CONDUIT, SIGNAL NO. 14 7C
7182	FOOT	ELECTRIC CABLE IN CONDUIT, LEAD-IN, NO. 14 1 PAIR
218	FOOT	ELECTRIC CABLE IN CONDUIT, SERVICE, NO. 6 2C
977	FOOT	ELECTRIC CABLE IN CONDUIT, EQUIPMENT GROUNDING CONDUCTOR, NO. 6 1C
2	EACH	TRAFFIC SIGNAL POST, GALVANIZED STEEL 16 FT.
1	EACH	STEEL MAST ARM ASSEMBLY AND POLE, 50 FT.
1	EACH	STEEL MAST ARM ASSEMBLY AND POLE, 52 FT.
1	EACH	STEEL MAST ARM ASSEMBLY AND POLE WITH DUAL MAST ARMS, 44 FT. AND 50 FT.
8	FOOT	CONCRETE FOUNDATION, TYPE A
4	FOOT	CONCRETE FOUNDATION, TYPE C
62	FOOT	CONCRETE FOUNDATION, TYPE E 36-INCH DIAMETER
8	EACH	SIGNAL HEAD, LED, 1-FACE, 3-SECTION, MAST ARM MOUNTED
8	EACH	SIGNAL HEAD, LED, 1-FACE, 5-SECTION, MAST ARM MOUNTED
2	EACH	SIGNAL HEAD, LED, 2-FACE, 1-3 SECTION, 1-5 SECTION, BRACKET MOUNTED
4	EACH	PEDESTRIAN SIGNAL HEAD, LED, 1-FACE, BRACKET MOUNTED WITH COUNTDOWN TIMER
1	EACH	PEDESTRIAN SIGNAL HEAD, LED, 2-FACE, BRACKET MOUNTED WITH COUNTDOWN TIMER
16	EACH	TRAFFIC SIGNAL BACKPLATE, LOUVERED, ALUMINUM
17	EACH	INDUCTIVE LOOP DETECTOR
859	FOOT	DETECTOR LOOP, TYPE I
3	EACH	LIGHT DETECTOR
1	EACH	LIGHT DETECTOR AMPLIFIER
6	EACH	PEDESTRIAN PUSH-BUTTON
4	EACH	TEMPORARY TRAFFIC SIGNAL INSTALLATION
1	EACH	REMOVE EXISTING TRAFFIC SIGNAL EQUIPMENT
18	EACH	REMOVE EXISTING HANDHOLE
5	EACH	REMOVE EXISTING CONCRETE FOUNDATION
660	FOOT	EMERGENCY VEHICLE PRIORITY SYSTEM LINE SENSOR CABLE, NO. 20 3/C
1	EACH	FULL-ACTUATED CONTROLLER AND TYPE IV CABINET, SPECIAL
1	EACH	UNINTERRUPTIBLE POWER SUPPLY, SPECIAL
4	EACH	TEMPORARY TRAFFIC SIGNAL TIMING
4	EACH	ILLUMINATED STREET NAME SIGN
1	EACH	STEEL MAST ARM ASSEMBLY AND POLE WITH DUAL MAST ARMS, 40 FT. AND 54 FT.

100% COST TO CITY OF COUNTRYSIDE  
 \*\* 3 EACH ILLUMINATED STREET NAME SIGNS ARE 100% COST TO CITY OF COUNTRYSIDE  
 AND 1 EACH ILLUMINATED STREET NAME SIGN IS 100% COST TO VILLAGE OF HODCKINS

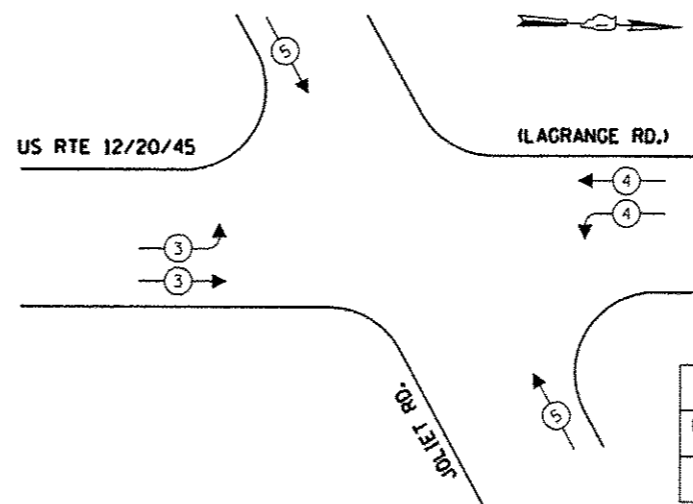
CONTROLLER SEQUENCE



PHASE DESIGNATION DIAGRAM

OVERLAP LETTER	PERMISSIVE PHASE	PROTECTED PHASE
A	= 2	+ 3
C	= 6	+ 7
D	= 8	+ 1

EMERGENCY VEHICLE PREEMPTION SEQUENCE

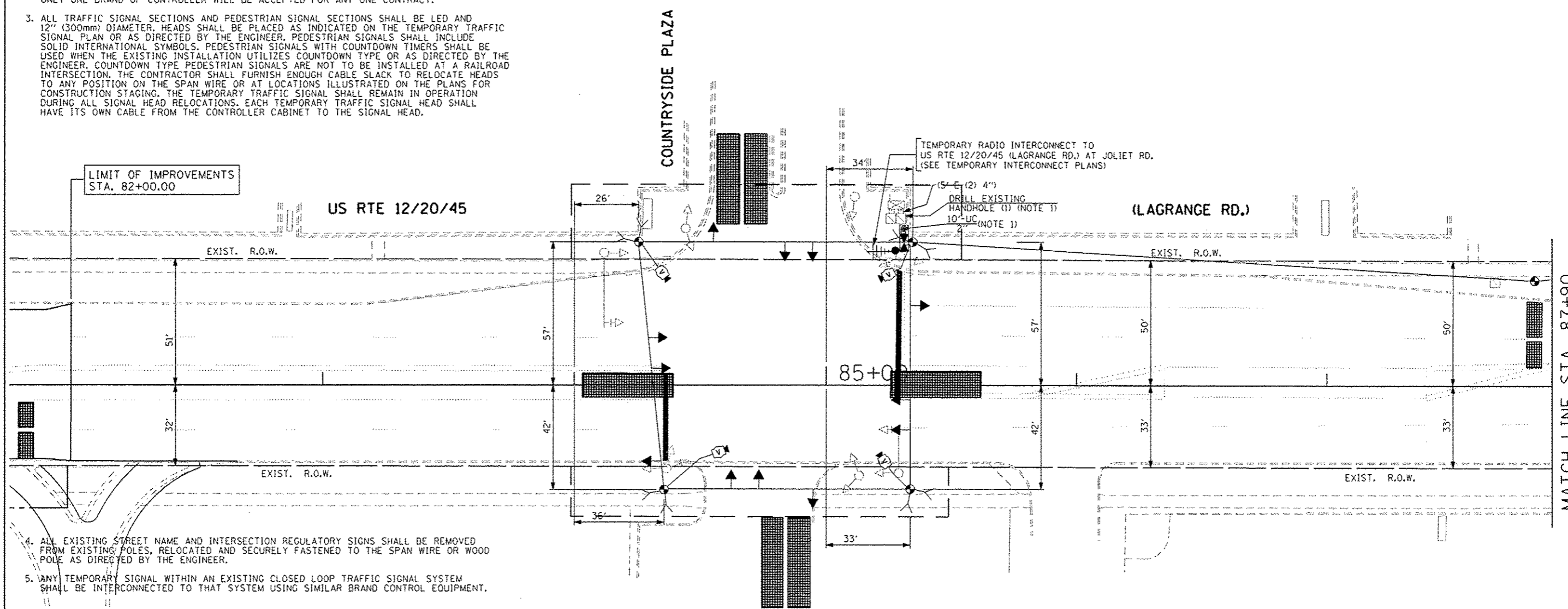


PROPOSED EMERGENCY VEHICLE PREEMPTORS			
EMERGENCY VEHICLE PREEMPTOR	3	4	5
MOVEMENT	→	←	↑

THE TRAFFIC SIGNAL CONTROL EQUIPMENT FOR THIS PROJECT SHALL BE "EAGLE" TO MATCH THE EXISTING ADJACENT SYSTEM.

NOTES FOR TEMPORARY TRAFFIC SIGNALS

1. ALL CONTROL EQUIPMENT INCLUDING EMERGENCY PRE-EMPTION AND COMMUNICATION DEVICES FOR THE TEMPORARY TRAFFIC SIGNAL(S) SHALL BE FURNISHED BY THE CONTRACTOR.
2. ONLY CONTROLLERS SUPPLIED BY ONE OF THE DISTRICT APPROVED CLOSED LOOP EQUIPMENT MANUFACTURERS WILL BE APPROVED FOR USE AT TEMPORARY SIGNAL LOCATIONS. ALL CONTROLLERS USED FOR TEMPORARY TRAFFIC SIGNALS SHALL BE FULLY ACTUATED NEMA MICROPROCESSOR BASED WITH RS232 DATA ENTRY PORTS COMPATIBLE WITH EXISTING MONITORING SOFTWARE APPROVED BY IDOT DISTRICT 1, INSTALLED IN A NEMA TS2 CABINET. ONLY ONE BRAND OF CONTROLLER WILL BE ACCEPTED FOR ANY ONE CONTRACT.
3. ALL TRAFFIC SIGNAL SECTIONS AND PEDESTRIAN SIGNAL SECTIONS SHALL BE LED AND 12" (300mm) DIAMETER. HEADS SHALL BE PLACED AS INDICATED ON THE TEMPORARY TRAFFIC SIGNAL PLAN OR AS DIRECTED BY THE ENGINEER. PEDESTRIAN SIGNALS SHALL INCLUDE SOLID INTERNATIONAL SYMBOLS. PEDESTRIAN SIGNALS WITH COUNTDOWN TIMERS SHALL BE USED WHEN THE EXISTING INSTALLATION UTILIZES COUNTDOWN TYPE OR AS DIRECTED BY THE ENGINEER. COUNTDOWN TYPE PEDESTRIAN SIGNALS ARE NOT TO BE INSTALLED AT A RAILROAD INTERSECTION. THE CONTRACTOR SHALL FURNISH ENOUGH CABLE SLACK TO RELOCATE HEADS TO ANY POSITION ON THE SPAN WIRE OR AT LOCATIONS ILLUSTRATED ON THE PLANS FOR CONSTRUCTION STAGING. THE TEMPORARY TRAFFIC SIGNAL SHALL REMAIN IN OPERATION DURING ALL SIGNAL HEAD RELOCATIONS. EACH TEMPORARY TRAFFIC SIGNAL HEAD SHALL HAVE ITS OWN CABLE FROM THE CONTROLLER CABINET TO THE SIGNAL HEAD.



TEMPORARY TRAFFIC SIGNAL PLAN - PRE-STAGE

4. ALL EXISTING STREET NAME AND INTERSECTION REGULATORY SIGNS SHALL BE REMOVED FROM EXISTING POLES, RELOCATED AND SECURELY FASTENED TO THE SPAN WIRE OR WOOD POLE AS DIRECTED BY THE ENGINEER.
5. ANY TEMPORARY SIGNAL WITHIN AN EXISTING CLOSED LOOP TRAFFIC SIGNAL SYSTEM SHALL BE INTERCONNECTED TO THAT SYSTEM USING SIMILAR BRAND CONTROL EQUIPMENT.
6. THE TEMPORARY TRAFFIC SIGNAL SHALL HAVE THE SIGNAL HEAD DISPLAYS, SIGNAL HEAD PLACEMENTS AND CONTROLLER PHASING MATCH THE EXISTING TRAFFIC SIGNAL, AT THE TIME OF THE TURN ON. IF NO TRAFFIC STAGING IS IN PLACE OR WILL NOT BE STAGED ON THE DAY OF THE TURN ON.
7. UNINTERRUPTIBLE POWER SUPPLY (UPS) SYSTEMS SHALL BE INSTALLED AND MADE OPERATIONAL AT TEMPORARY TRAFFIC SIGNAL INSTALLATIONS WHERE UPS IS INSTALLED AT THE EXISTING TRAFFIC SIGNAL, TEMPORARY TRAFFIC SIGNALS AT RAILROAD INTERSECTIONS, AND TEMPORARY TRAFFIC SIGNALS AT INTERSECTIONS WITH FIRE STATION ACTUATED EMERGENCY VEHICLE PRE-EMPTION, OR WHEN INDICATED ON THE PLANS.
8. TRAFFIC SIGNAL MANAGEMENT SYSTEMS SHALL BE MAINTAINED IN OPERATION AS INDICATED ON THE PLANS OR AS DIRECTED BY THE ENGINEER. REQUIRED EQUIPMENT SHALL BE AS SHOWN ON THE PLANS AND THE CONTRACTOR SHALL PLACE THE EQUIPMENT IN OPERATION TO THE SATISFACTION OF THE ENGINEER AND THE AGENCY RESPONSIBLE FOR THE TRAFFIC SIGNAL MANAGEMENT SYSTEM.
9. DETECTION AT TEMPORARY TRAFFIC SIGNALS SHALL BE INCLUDED FOR ALL APPROACHES OF THE INTERSECTION UNLESS INDICATED OTHERWISE ON THE PLANS. THE DETECTION SYSTEM MUST MEET THE SPECIFICATIONS OF DISTRICT 1 AND THE CONTRACTOR SHALL PLACE THE DETECTORS INTO OPERATION TO THE SATISFACTION OF THE ENGINEER.
10. WHEN PAN, TILT, ZOOM CAMERAS ARE INSTALLED AT THE EXISTING INTERSECTION OR ARE CALLED FOR IN THE PLANS, THE CONTRACTOR SHALL BE RESPONSIBLE FOR INSTALLING AND MAINTAINING THE CAMERAS TO THE SATISFACTION OF THE ENGINEER AND THE AGENCY RESPONSIBLE FOR THE CAMERAS.

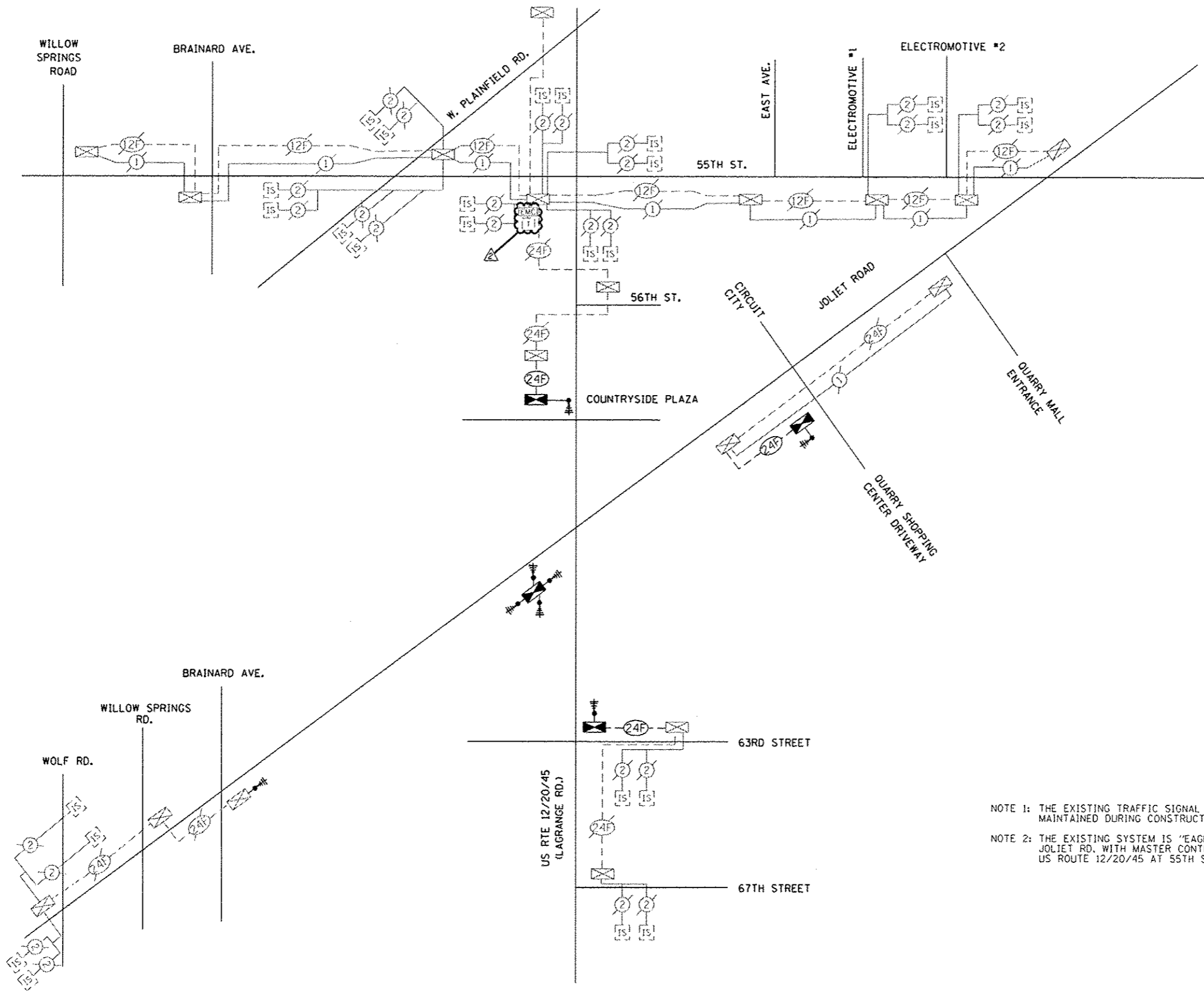
**SPECIAL NOTE TO CONTRACTOR:**  
 THE EXISTING TRAFFIC SIGNAL INSTALLATION SHALL BE DISCONNECTED AND ALL THE EXISTING SIGNAL HEADS, TO REMAIN IN PLACE, SHALL BE BAGGED WHEN THE TEMPORARY TRAFFIC SIGNAL INSTALLATION IS IN PLACE AND IN OPERATION. UPON COMPLETION OF THE CONSTRUCTION ACTIVITIES, AND PRIOR TO REMOVAL OF THE TEMPORARY TRAFFIC SIGNAL INSTALLATION, THE EXISTING TRAFFIC SIGNAL HEADS SHALL BE UNBAGGED AND THE EXISTING TRAFFIC SIGNAL INSTALLATION SHALL BE MADE OPERATIONAL AS DIRECTED BY THE ENGINEER. THIS WORK SHALL NOT BE PAID FOR SEPARATELY BUT SHALL BE INCLUDED IN THE PAY ITEM "MAINTENANCE OF EXISTING TRAFFIC SIGNAL INSTALLATION".

- NOTE 1: INSTALL TEMPORARY INTERCONNECT CABLE NO. 62.5/125 MM12F SM12F BETWEEN THE EXISTING CONTROLLER CABINET AND THE TEMPORARY CONTROLLER CABINET, FOR THE PURPOSE OF MAINTAINING EXISTING INTERCONNECT SYSTEM. THIS WORK SHALL BE INCIDENTAL TO THE PAY ITEM "TEMPORARY TRAFFIC SIGNAL INSTALLATION".
- NOTE 2: PRIOR TO CONSTRUCTION THE CONTRACTOR SHALL TEST FOR RADIO FREQUENCY INTERFERENCE PRIOR TO USING "RADIO INTERCONNECT". A COPY OF RESULTS WILL BE PROVIDED TO THE BUREAU OF TRAFFIC OPERATIONS FOR RECORD.

THE TRAFFIC SIGNAL CONTROL EQUIPMENT FOR THIS PROJECT SHALL BE "EAGLE" TO MATCH THE EXISTING ADJACENT SYSTEM.

FILE NAME	USER NAME	DESIGNED	REVISED	STATE OF ILLINOIS DEPARTMENT OF TRANSPORTATION	TEMPORARY TRAFFIC SIGNAL INSTALLATION PLAN US RTE 12/20/45 (LAGRANGE RD.) AT COUNTRYSIDE PLAZA PRE-STAGE (SHEET 1 OF 5)			F.A.P. RTE.	SECTION	COUNTY	TOTAL SHEETS	SHEET NO.
#FILE#		DRAWN	REVISED		330	2010-082-1	COOK	152	95			
		CHECKED	REVISED		SCALE: 1" = 20'			CONTRACT NO. 60L73				
		DATE	REVISED		SHEET NO. OF SHEETS		TO STA.		FED. ROAD DIST. NO. - ILLINOIS FED. AID PROJECT			





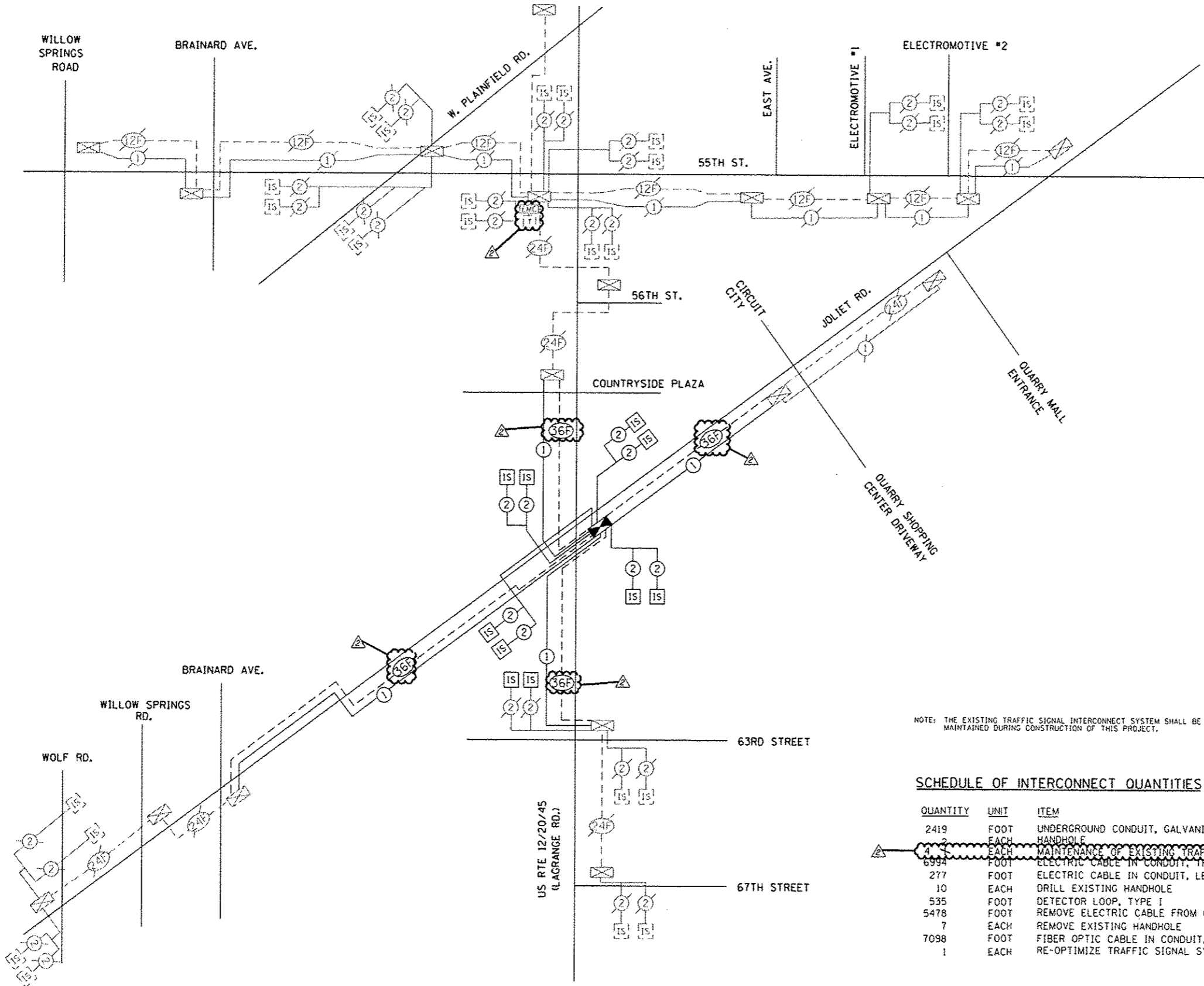
NOTE 1: THE EXISTING TRAFFIC SIGNAL INTERCONNECT SYSTEM SHALL BE MAINTAINED DURING CONSTRUCTION OF THIS PROJECT.

NOTE 2: THE EXISTING SYSTEM IS "EAGLE 2B" WHICH INCLUDES JOLIET RD. WITH MASTER CONTROLLER LOCATED AT US ROUTE 12/20/45 AT 55TH ST.

THE TRAFFIC SIGNAL CONTROL EQUIPMENT FOR THIS PROJECT SHALL BE "EAGLE" TO MATCH THE EXISTING ADJACENT SYSTEM.

FILE NAME * #FILE#	USER NAME * #USER#	DESIGNED - PKC	REVISED -	ADDENDUM NO. B. 12/26/2013	<b>STATE OF ILLINOIS</b> <b>DEPARTMENT OF TRANSPORTATION</b>	<b>TEMPORARY INTERCONNECT SCHEMATIC</b> <b>US RTE 12/20/45 FROM 67TH STREET TO 55TH STREET,</b> <b>JOLIET ROAD FROM WOLF ROAD TO QUARRY MALL ENTRANCE AND</b> <b>55TH STREET FROM WILLOW SPRING ROAD TO ELECTROMOTIVE #2</b>	F.A.P. RTE.	SECTION	COUNTY	TOTAL SHEETS	SHEET NO.
		DRAWN - MG, EA	REVISED -				330	2010-082-1	COOK	152	108
		CHECKED - PKG	REVISED -				CONTRACT NO. 60L73				
		DATE - 12/11/2013	REVISED -				FED. ROAD DIST. NO. 1 ILLINOIS FED. AID PROJECT				
					SCALE: 1" = 50'	SHEET NO. OF SHEETS	STA. TO STA.				





NOTE: THE EXISTING TRAFFIC SIGNAL INTERCONNECT SYSTEM SHALL BE MAINTAINED DURING CONSTRUCTION OF THIS PROJECT.

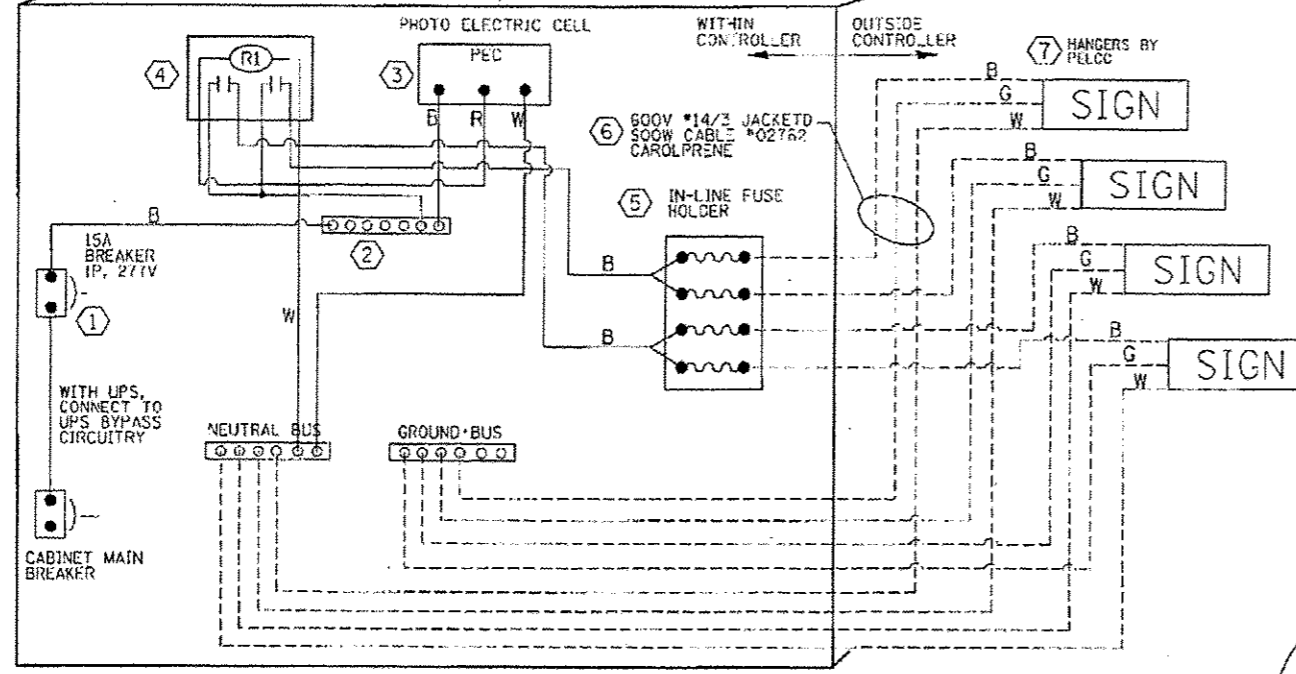
**SCHEDULE OF INTERCONNECT QUANTITIES**

QUANTITY	UNIT	ITEM
2419	FOOT	UNDERGROUND CONDUIT, GALVANIZED STEEL, 2" DIA.
2	EACH	HANDHOLE
4	EACH	MAINTENANCE OF EXISTING TRAFFIC SIGNAL INSTALLATION
6994	FOOT	ELECTRIC CABLE IN CONDUIT, TRACER NO. 14 1C
277	FOOT	ELECTRIC CABLE IN CONDUIT, LEAD-IN, NO. 14 1 PAIR
10	EACH	DRILL EXISTING HANDHOLE
535	FOOT	DETECTOR LOOP, TYPE I
5478	FOOT	REMOVE ELECTRIC CABLE FROM CONDUIT
7	EACH	REMOVE EXISTING HANDHOLE
7098	FOOT	FIBER OPTIC CABLE IN CONDUIT, NO. 62.5/125, MM12F SM24F
1	EACH	RE-OPTIMIZE TRAFFIC SIGNAL SYSTEM LEVEL 2

THE TRAFFIC SIGNAL CONTROL EQUIPMENT FOR THIS PROJECT SHALL BE "EAGLE" TO MATCH THE EXISTING ADJACENT SYSTEM.

FILE NAME * #FILE#	USER NAME * #USER#	DESIGNED - PKG	REVISED - 2010/08/08, 12/26/2013	<b>STATE OF ILLINOIS DEPARTMENT OF TRANSPORTATION</b>	<b>PROPOSED INTERCONNECT SCHEMATIC US RTE 12/20/45 FROM 67TH STREET TO 55TH STREET, JOLIET ROAD FROM WOLF ROAD TO QUARRY MALL ENTRANCE AND 55TH STREET FROM WILLOW SPRING ROAD TO ELECTROMOTIVE #2</b>	F.A.P. RTE.	SECTION	COUNTY	TOTAL SHEETS	SHEET NO.	
		DRAWN - MC, EA	REVISED -			330	2010-082-1	COOK	152	112	
		CHECKED - PKG	REVISED -			SCALE: N.T.S.		SHEET NO. OF SHEETS STA. TO STA.		FED. ROAD DIST. NO. 1 ILLINOIS FED. AID PROJECT	
		DATE - 12/11/2013	REVISED -			CONTRACT NO. 60L73					

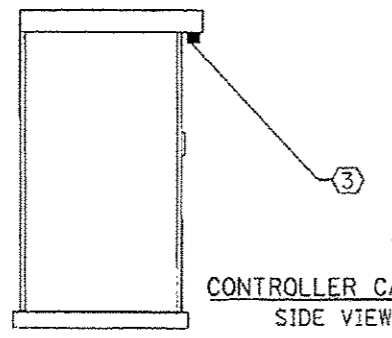




LED SIGN WIRING DETAIL

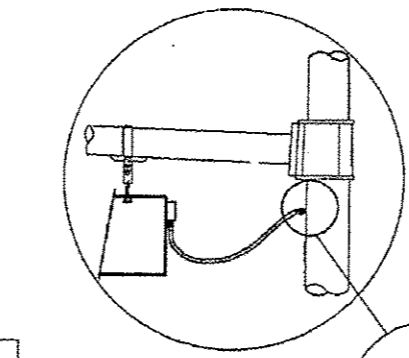
BILL OF MATERIALS

DESCRIPTION	MANUFACTURER	MODEL	NOTES
① CIRCUIT BREAKER		15 AMPERE	Welded case, Thermal Mag. min. R.I. of 14K R.M.S. symmetrical amperes at 277V.
② TERMINAL BLOCK	MARATHON	1502 DJSV	
③ PHOTO ELECTRIC CONTROL	FISHER PIERCE	B124-1.5-07762	
④ CONTROL RELAY	SQUARE D	8501X020V02	BOLT ON W/SCREW TERMINAL
⑤ INLINE FUSE HOLDER WITH 5 AMP FUSE	BUSSMAN	S-8000 BK/S-8-3-4-R	
⑥ ELECTRIC CABLE, NO. 14, 3/C (BLACK, WHITE, GREEN)	CAROLPRENE/SOOW	02762	
⑦ SIGN MOUNTING HARDWARE	PELCO	Pendant (SE-5015) Direct mount (AB-0104-L-SP) Additional sign stiffeners may be required for direct mounted signs.	S.S. HARDWARE

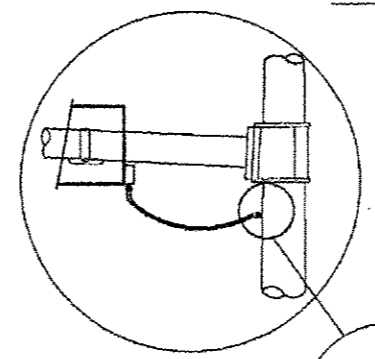


CONTROLLER CABINET SIDE VIEW

THE CONTRACTOR SHALL CONTACT THE MUNICIPALITY FOR APPROVAL OF THE SIGN PRIOR TO CONSTRUCTION AND INSTALLATION OF THE ILLUMINATED STREET NAME SIGN.

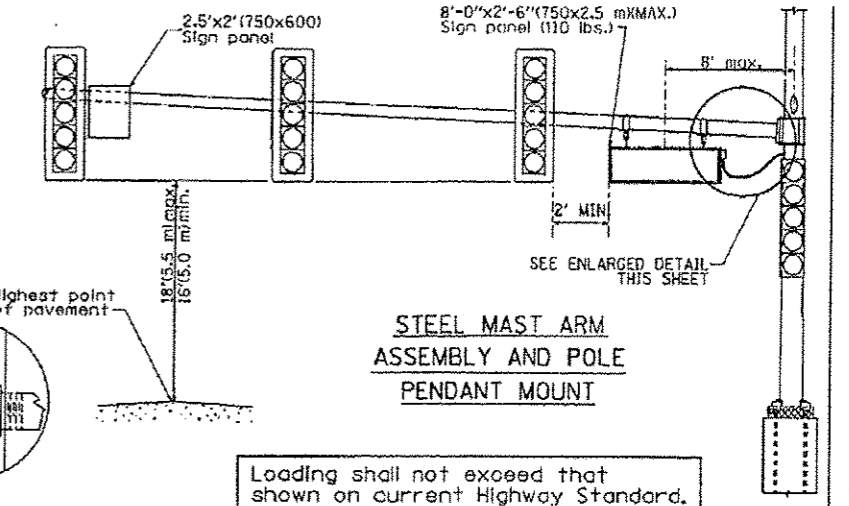


L.E.D. SIGN ENLARGED CABLE CONNECTOR DETAIL FOR PENDANT MOUNT



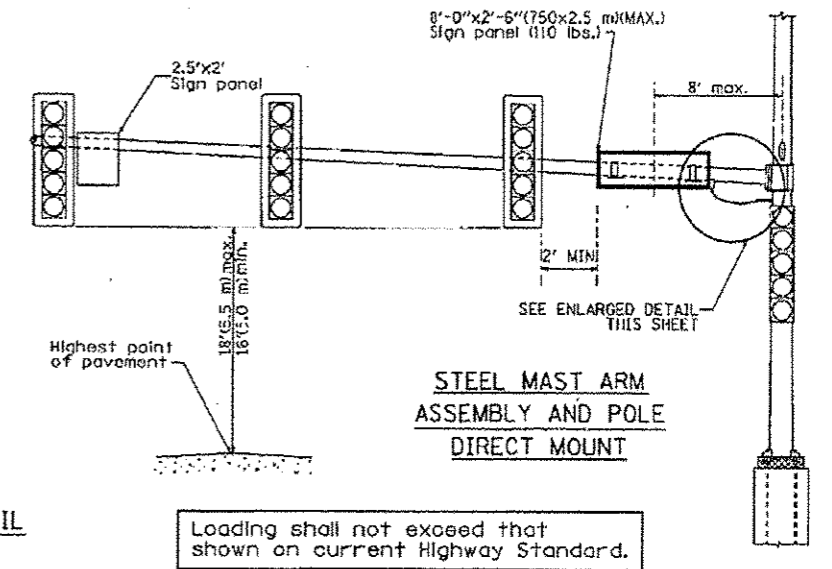
L.E.D. SIGN ENLARGED CABLE CONNECTOR DETAIL FOR DIRECT MOUNT

L.E.D. SIGN ENLARGED CABLE CONNECTOR DETAIL



STEEL MAST ARM ASSEMBLY AND POLE PENDANT MOUNT

Loading shall not exceed that shown on current Highway Standard.



STEEL MAST ARM ASSEMBLY AND POLE DIRECT MOUNT

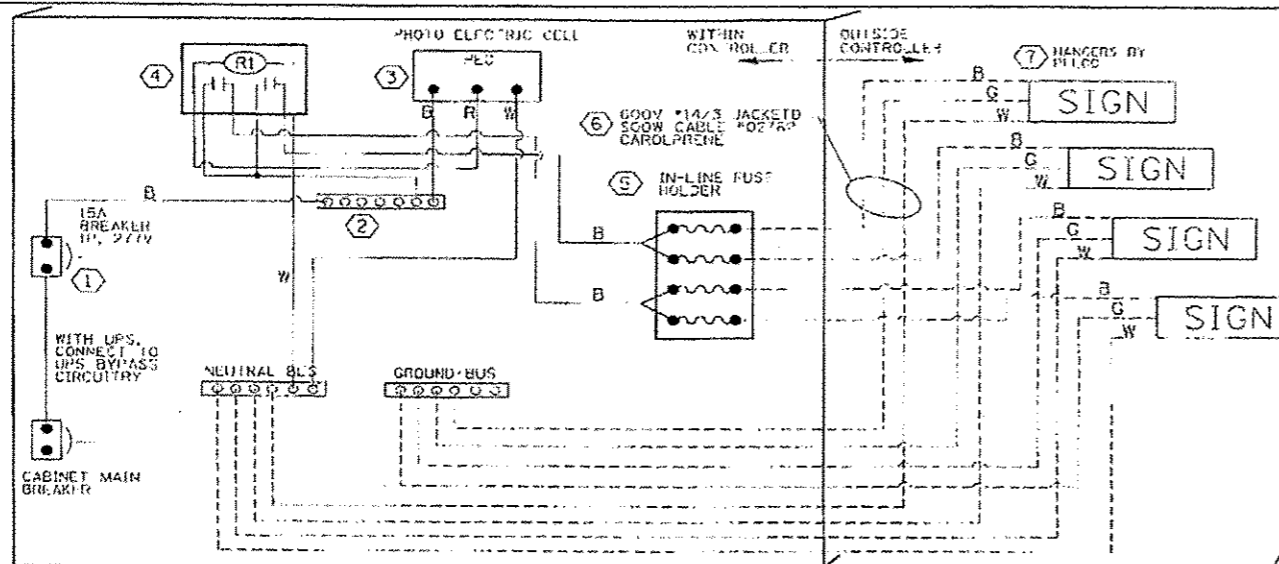
Loading shall not exceed that shown on current Highway Standard.



LED ILLUMINATED SIGN PANEL  
8'0" x 2'6" (750 mm x 2.5 mm)(MAX)  
C or D FONT

NOTES:

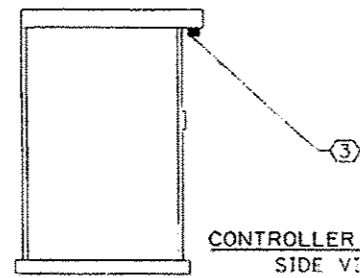
- SIGNS SHALL BE SINGLE SIDED FOR DIRECT MOUNT AND DOUBLE SIDED FOR PENDANT MOUNT.
- CERTAIN ADDITIONAL INFORMATION MAY BE ALLOWED ON THE SIGN. VERIFY WITH ENGINEER.
- SIGNS SHALL NOT BE ENERGIZED WHEN TRAFFIC SIGNALS ARE POWERED BY THE UPS. THE SIGNS SHALL BE CONNECTED TO THE UPS BYPASS CIRCUITRY.
- ALL WIRING WITHIN THE CABINET SHALL BE COLOR CODED AS INDICATED:  
R = RED      BL = BLUE      W = WHITE  
B = BLACK      Y = YELLOW      G = GREEN
- ALL 120 VOLT SYSTEM AND ALL CONTROL WIRING SHALL BE #12AWG STRANDED UNLESS OTHERWISE INDICATED.
- ALL WIRING SHALL BE NEATLY DRESSED AND SUPPORTED.



LED SIGN WIRING DETAIL

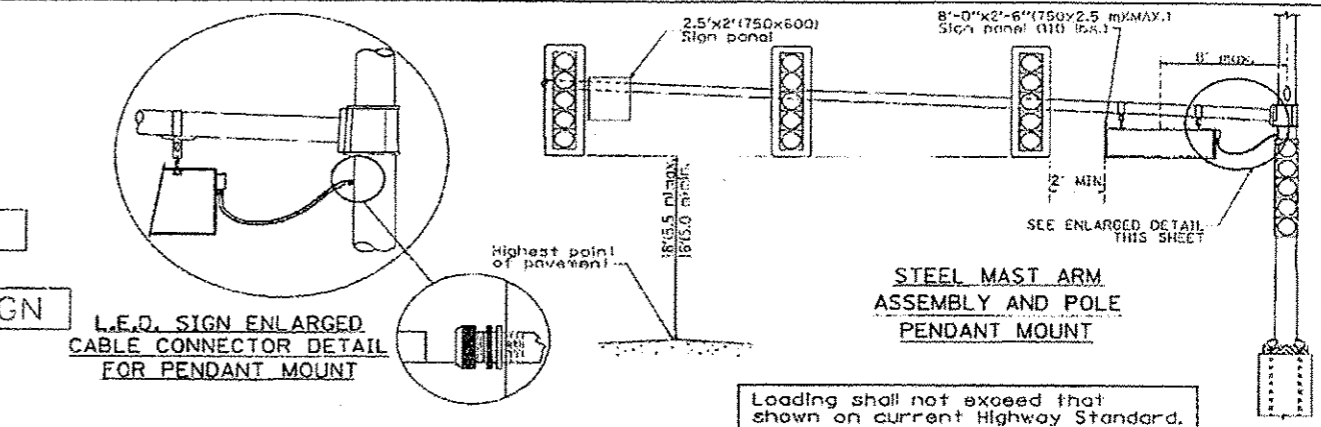
BILL OF MATERIALS

DESCRIPTION	MANUFACTURER	MODEL	NOTES
① CIRCUIT BREAKER		15 AMPERE	Wolcott case, 1 normal leg, min. R.I. of 14K R.M.S., symmetrical ampere at 277V.
② TERMINAL BLOCK	MARATHON	1502 DJSV	
③ PHOTO ELECTRIC CONTROL	FISHER PIERCE	B124-1.5-07762	
④ CONTROL RELAY	SQUARE D	8501X02CV02	BOLT ON W/SCREW TERMINAL
⑤ IN-LINE FUSE HOLDER WITH 5 AMP FUSE	BUSSMAN	5-8000 3K/5-8-3-4-R	
⑥ ELECTRIC CABLE, NO. 14, 3/C (BLACK, WHITE, GREEN)	CAROLPRENE/SQOW	02762	
⑦ SIGN MOUNTING HARDWARE	PELCO	Pendant (SE-5015) Direct mount (AD-0104-L-SP) Additional sign stiffeners may be required for direct mounted signs.	S.S. HARDWARE



CONTROLLER CABINET SIDE VIEW

THE CONTRACTOR SHALL CONTACT THE MUNICIPALITY FOR APPROVAL OF THE SIGN PRIOR TO CONSTRUCTION AND INSTALLATION OF THE ILLUMINATED STREET NAME SIGN.

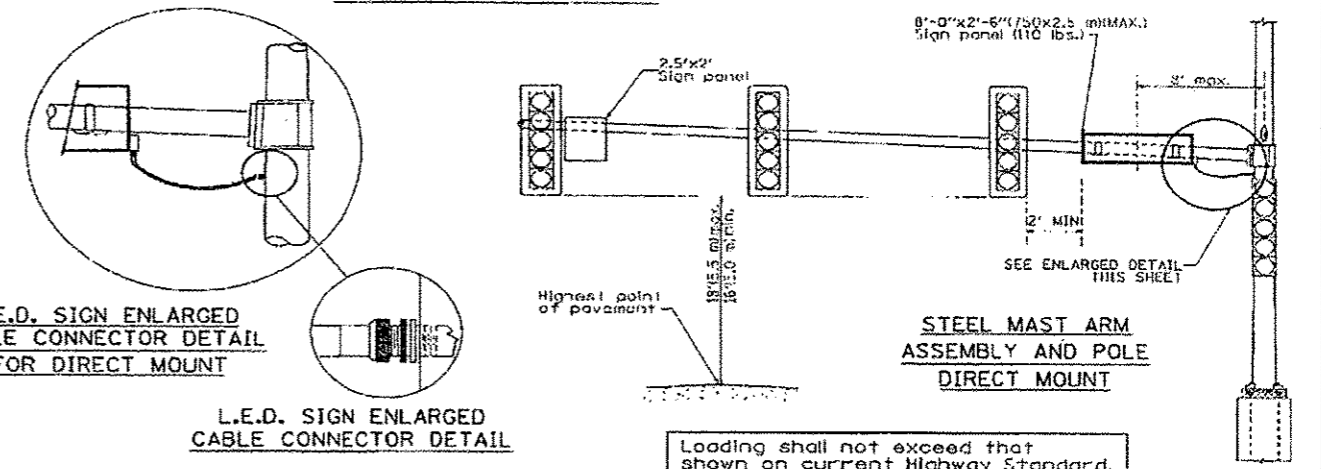


L.E.D. SIGN ENLARGED CABLE CONNECTOR DETAIL FOR PENDANT MOUNT

L.E.D. SIGN ENLARGED CABLE CONNECTOR DETAIL

STEEL MAST ARM ASSEMBLY AND POLE PENDANT MOUNT

Loading shall not exceed that shown on current Highway Standard.



L.E.D. SIGN ENLARGED CABLE CONNECTOR DETAIL FOR DIRECT MOUNT

L.E.D. SIGN ENLARGED CABLE CONNECTOR DETAIL

STEEL MAST ARM ASSEMBLY AND POLE DIRECT MOUNT

Loading shall not exceed that shown on current Highway Standard.

**La Grange Road**  
Village of Hodgkins

NOTE 1

NOTE 2

LED ILLUMINATED SIGN PANEL  
8'0" x 2'6" (250 mm x 2.5 mm) (MAX)  
C or D FONT

- NOTES:
- SIGNS SHALL BE SINGLE SIDED FOR DIRECT MOUNT AND DOUBLE SIDED FOR PENDANT MOUNT.
  - CERTAIN ADDITIONAL INFORMATION MAY BE ALLOWED ON THE SIGN. VERIFY WITH ENGINEER.
  - SIGNS SHALL NOT BE ENERGIZED WHEN TRAFFIC SIGNALS ARE POWERED BY THE UPS. THE SIGNS SHALL BE CONNECTED TO THE UPS BYPASS CIRCUITRY.
  - ALL WIRING WITHIN THE CABINET SHALL BE COLOR CODED AS INDICATED:  
R = RED BL = BLUE W = WHITE  
B = BLACK Y = YELLOW G = GREEN
  - ALL 120 VOLT SYSTEM AND ALL CONTROL WIRING SHALL BE #12AWG STRANDED UNLESS OTHERWISE INDICATED.
  - ALL WIRING SHALL BE NEATLY DRESSED AND SUPPORTED.