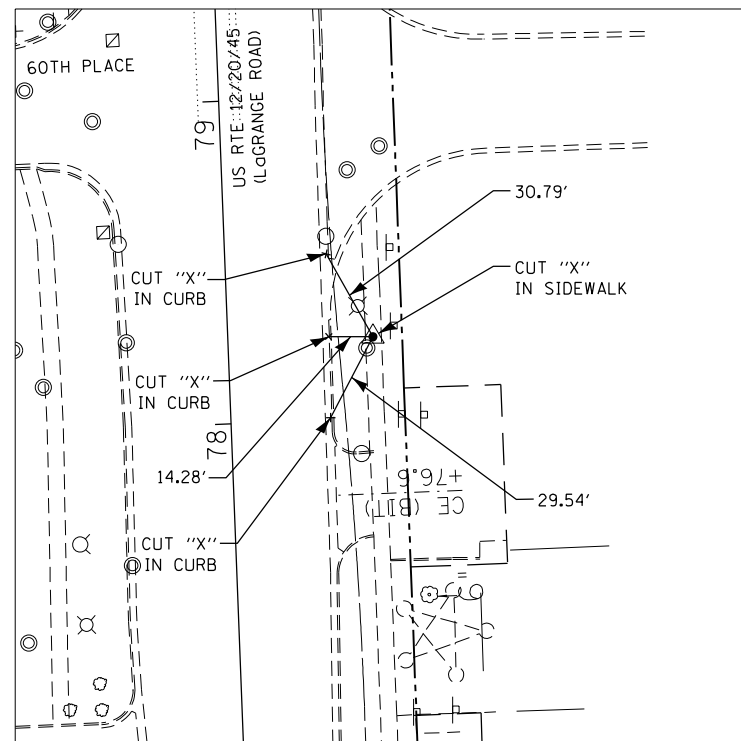
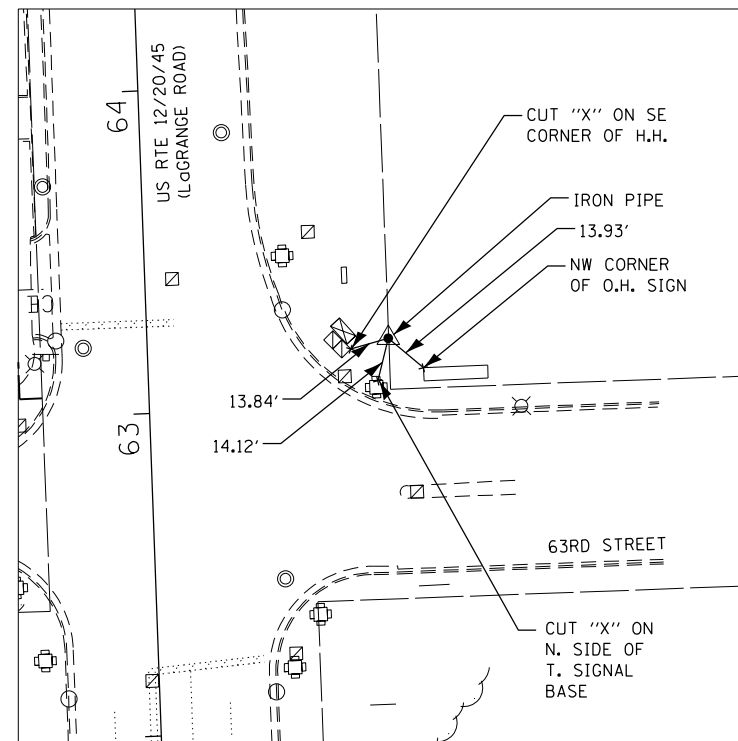


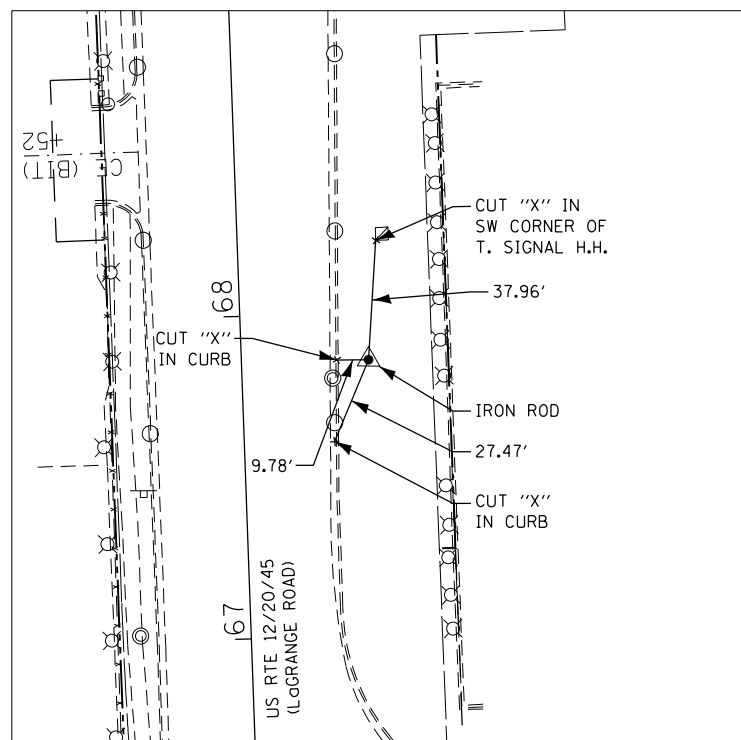
CONTROL POINT #5: STA. 72+62.27, 80.01' LT
 N 1,862,284.428
 E 1,111,048.561
 ELEV=656.70



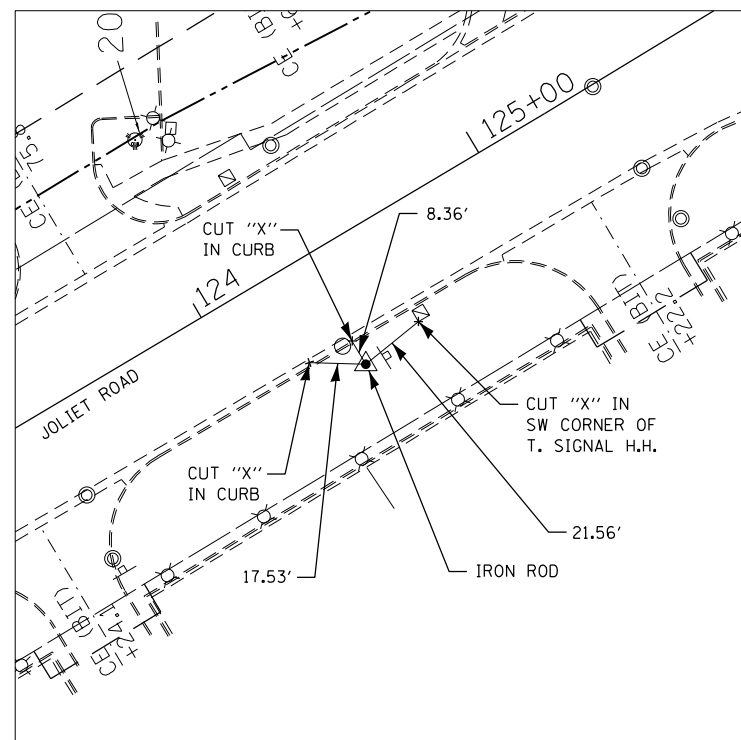
CONTROL POINT #6: STA. 78+25.23, 44.96' RT
 N 1,863,366.712
 E 1,111,131.632
 ELEV=654.56



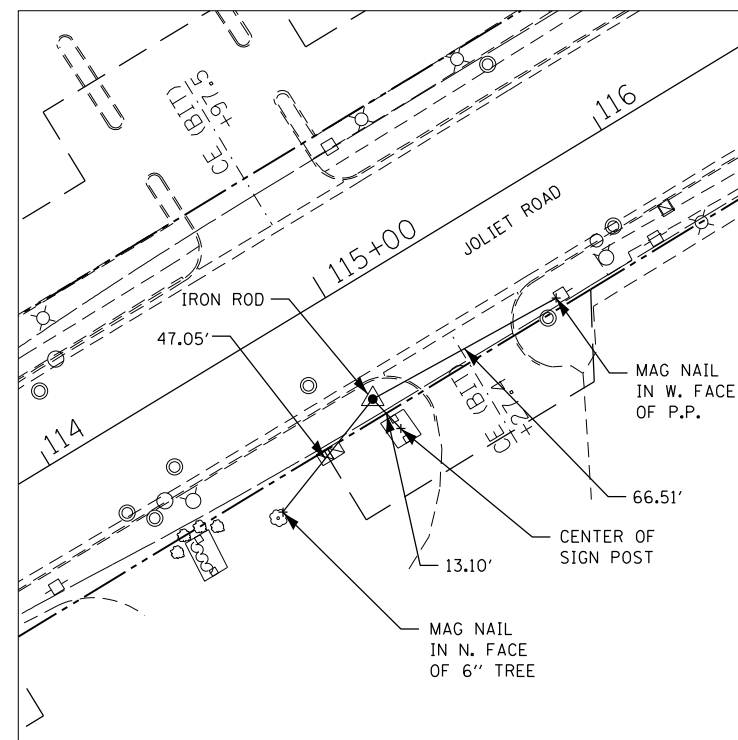
CONTROL POINT #7: STA. 62+20.65, 74.70' RT
 N 1,861,349.263
 E 1,111,237.496
 ELEV=657.88



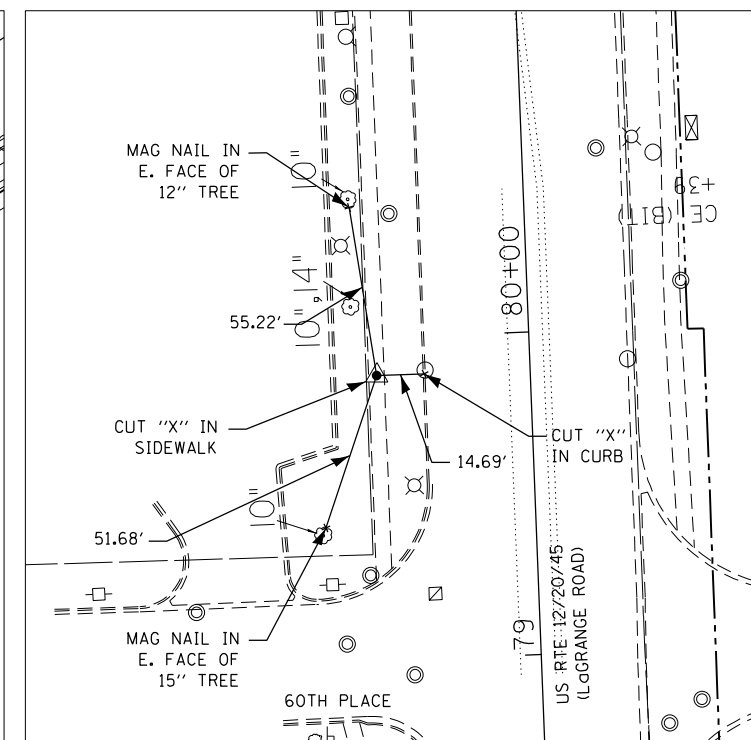
CONTROL POINT #12: STA. 67+85.11, 39.35' RT
 N 1,861,812.135
 E 1,111,185.308
 ELEV=659.33



CONTROL POINT #13: STA. 124+36.45, 38.50' RT
 N 1,862,428.624
 E 1,111,522.822
 ELEV=656.46



CONTROL POINT #14: STA. 114+96.15, 34.42' RT
 N 1,861,948.004
 E 1,110,715.054
 ELEV=661.08



CONTROL POINT #15: STA. 79+88.31, 47.61' LT
 N 1,863,011.182
 E 1,111,052.677
 ELEV=658.27

FILE NAME =	USER NAME = #USER#	DESIGNED - BDH	REVISED -
#FILE#		DRAWN - BCD	REVISED -
	PLOT SCALE = #SCALE#	CHECKED - BDH	REVISED -
	PLOT DATE = #DATE#	DATE - 10-16-13	REVISED -

**STATE OF ILLINOIS
 DEPARTMENT OF TRANSPORTATION**

CONTROL POINTS AND TIES

SCALE: 1"=30' SHEET NO. OF SHEETS STA. TO STA.

F.A.P. RTE.	SECTION	COUNTY	TOTAL SHEETS	SHEET NO.
330	2010-082-1	COOK	152	16
ILLINOIS FED. AID PROJECT			CONTRACT NO. 60L73	