

WORK ZONE	W21-1115(O)-3618
SPEED LIMIT	R2-1-3648
PHOTO ENFORCED	R10-1108p-3618
\$375 FINE MINIMUM	R2-1106p-3618

WORK ZONE	W21-1115(O)-3618
SPEED LIMIT	R2-1-3648
PHOTO ENFORCED	R10-1108p-3618
\$375 FINE MINIMUM	R2-1106p-3618

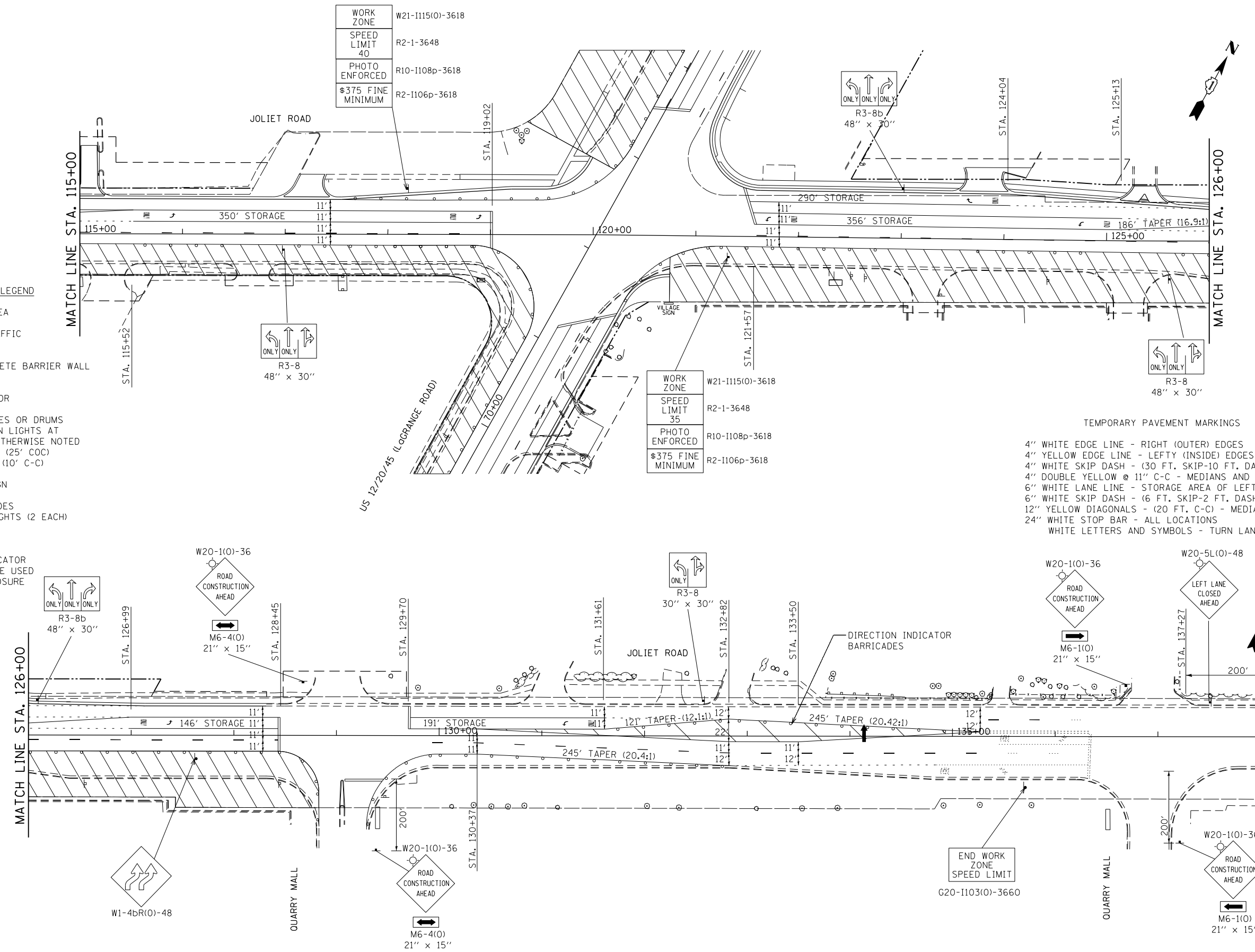
WORK ZONE	W21-1115(O)-3618
SPEED LIMIT	R2-1-3648
PHOTO ENFORCED	R10-1108p-3618
\$375 FINE MINIMUM	R2-1106p-3618

MAINTENANCE OF TRAFFIC LEGEND

- CONSTRUCTION AREA
- DIRECTION OF TRAFFIC
- TEMPORARY CONCRETE BARRIER WALL
- IMPACT ATTENUATOR
- TYPE 11 BARRICADES OR DRUMS WITH STEADY BURN LIGHTS AT 50' C-C UNLESS OTHERWISE NOTED DEVICES IN TAPER (25' C-C) DEVICES IN RADII (10' C-C)
- CONSTRUCTION SIGN
- TYPE III BARRICADES WITH FLASHING LIGHTS (2 EACH)
- ARROW BOARD
- DIRECTIONAL INDICATOR BARRICADES (TO BE USED ONLY IN LANE CLOSURE TAPERS)

TEMPORARY PAVEMENT MARKINGS

- 4" WHITE EDGE LINE - RIGHT (OUTER) EDGES
- 4" YELLOW EDGE LINE - LEFTY (INSIDE) EDGES
- 4" WHITE SKIP DASH - (30 FT. SKIP-10 FT. DASH) - BETWEEN LANES
- 4" DOUBLE YELLOW @ 11" C-C - MEDIANS AND BETWEEN OPPOSING LANES
- 6" WHITE SKIP DASH - (6 FT. SKIP-2 FT. DASH) - LEFT-TURN BAY ENTRANCE
- 12" YELLOW DIAGONALS - (20 FT. C-C) - MEDIANS
- 24" WHITE STOP BAR - ALL LOCATIONS
- WHITE LETTERS AND SYMBOLS - TURN LANES



NOTES:
* - ONLY WHEN WORKERS/FLAGGERS ARE ON JOBSITE

REMOVE EXISTING PAVEMENT MARKINGS IN CONFLICT
COVER EXISTING SIGNS IN CONFLICT

FILE NAME =	USER NAME = #USER#	DESIGNED - TA	REVISED -	STATE OF ILLINOIS DEPARTMENT OF TRANSPORTATION	MAINTENANCE OF TRAFFIC-STAGE 2 JOLIET ROAD			F.A.P. RTE. 330	SECTION 2010-082-1	COUNTY COOK	TOTAL SHEETS 152	SHEET NO. 29
#FILE#	PLOT SCALE = #SCALE#	DRAWN - BCD	REVISED -		SCALE: 1"=50'	SHEET NO. OF SHEETS	STA. 115+00 TO STA. 138+00	ILLINOIS FED. AID PROJECT				
	PLOT DATE = #DATE#	CHECKED - TA	REVISED -									
		DATE - 10-16-13	REVISED -									
CONTRACT NO. 60L73												