
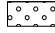




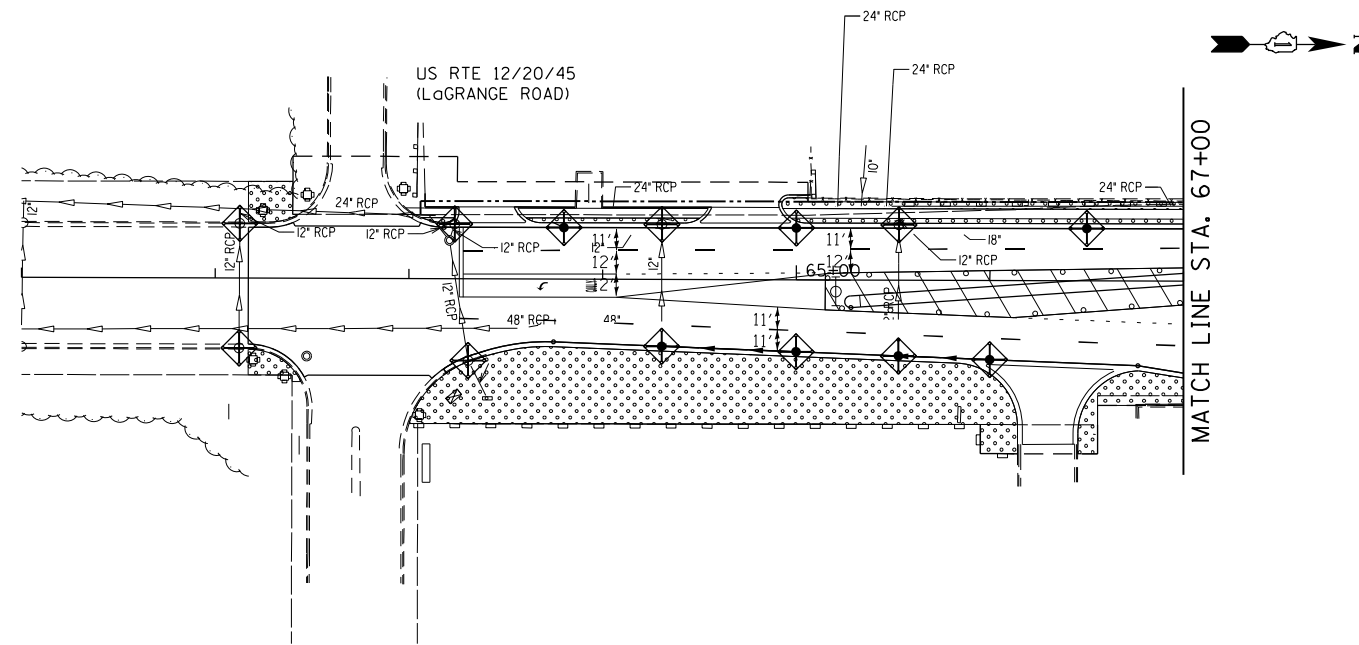


TEMPORARY EROSION CONTROL NOTES

1. SEDIMENT AND EROSION CONTROL DEVICES SHALL BE FUNCTIONAL BEFORE LAND IS OTHERWISE DISTURBED ON THE SITE.
2. IF A STOCKPILE IS TO REMAIN IN PLACE FOR MORE THAN 3 DAYS, THEN SEDIMENT AND EROSION CONTROL DEVICES SHALL BE INSTALLED DURING CONSTRUCTION.
3. STORM SEWER INLETS SHALL BE PROTECTED WITH SEDIMENT TRAPPING OR FILTER CONTROL DEVICES DURING CONSTRUCTION.
4. THE QUANTITIES SHOWN FOR INLET & PIPE PROTECTION AND TEMPORARY DITCH CHECKS ARE SUFFICIENT FOR ONE (1) SETUP AND THREE (3) REPLACEMENTS.
5. THE CONTRACTOR SHALL MAINTAIN ALL EROSION CONTROL MEASURES IN SERVICEABLE CONDITION AT ALL TIMES. EROSION CONTROL MEASURES WILL BE INSPECTED ON A WEEKLY BASIS AND WITHIN 24 HOURS OF ANY STORM EXCEEDING 0.5 INCHES OF PRECIPITATION OR EQUIVALENT SNOWFALL.
6. ALL CONSTRUCTION ACTIVITIES SHALL BE IN ACCORDANCE WITH THE NATIONAL POLLUTANT DISCHARGE ELIMINATION SYSTEM STORM WATER PERMIT FOR THIS PROJECT.
7. AS WORK PROGRESSES, ALL SLOPES 3:1 OR GREATER SHALL RECEIVE TEMPORARY EROSION CONTROL SEEDING AND EROSION CONTROL BLANKET IMMEDIATELY. ALL FLATTER AREAS THAT DO NOT HAVE A COVER OF VEGETATION, AND WHERE NO FURTHER WORK IS TO OCCUR FOR ONE MONTH OR MORE, SHALL BE TEMPORARILY SEEDED WITHIN SEVEN (7) CALENDAR DAYS UNLESS OTHERWISE DIRECTED BY THE ENGINEER. A SUFFICIENT QUANTITY OF TEMPORARY EROSION CONTROL SEEDING IS INCLUDED TO COVER THE LIMITS OF PERMANENT LANDSCAPING.
8. ALL PROPOSED OPEN LID DRAINAGE STRUCTURES SHALL BE PROTECTED AS DIRECTED BY THE ENGINEER WITH INLET FILTERS, AND THIS WORK SHALL BE PAID FOR AT THE CONTRACT UNIT PRICE EACH FOR "INLET FILTERS". ALL OPEN END CULVERTS SHALL BE PROTECTED AS DIRECTED BY THE ENGINEER, WHICH WORK SHALL BE PAID FOR AT THE CONTRACT UNIT PRICE EACH FOR "INLET AND PIPE PROTECTION".
9. WATER PUMPED OR OTHERWISE DISCHARGED FROM THE SITE DURING CONSTRUCTION DEWATERING SHALL BE FILTERED.
10. ANY SOIL, MUD OR DEBRIS WASHED, TRACKED, OR DEPOSITED ONTO THE STREET SHALL BE REMOVED PRIOR TO THE END OF THE WORK DAY.
11. SILT FENCE SHALL BE INSTALLED ALONG R.O.W. LINES EXCEPT WHERE IT WOULD CROSS CONTOURS. INSTALL J-HOOKS PER HIGHWAY STANDARD SHEET 280001-06.
12. TEMPORARY EROSION CONTROL SEEDING TO BE PLACED ON ALL NEWLY DISTURBED AREAS EVERY 7 DAYS IF AN AREA IS TO BE IDLE FOR 14 DAYS OR MORE.

STORMWATER POLLUTION PREVENTION LEGEND

-  PERIMETER EROSION BARRIER (P.E.B)
-  TEMPORARY EROSION CONTROL SEEDING
-  INLET AND PIPE PROTECTION
-  INLET FILTERS (EXISTING DRAINAGE STRUCTURES)
-  INLET FILTERS (PROPOSED DRAINAGE STRUCTURES)
-  DRAINAGE STRUCTURES



FILE NAME = #FILEL#	USER NAME = #USER#	DESIGNED - BDH	REVISED -	STATE OF ILLINOIS DEPARTMENT OF TRANSPORTATION	EROSION AND SEDIMENT CONTROL PLAN STAGE III			F.A.P. RTE.	SECTION	COUNTY	TOTAL SHEETS	SHEET NO.
	PLOT SCALE = #SCALE#	DRAWN - BCD	REVISED -					330	2010-082-1	COOK	152	40
	PLOT DATE = #DATE#	CHECKED - BDH	REVISED -		SCALE: 1" = 50' SHEET NO. OF SHEETS STA. 61+00 TO STA. 67+00			CONTRACT NO. 60L73				
	DATE - 10-16-13	REVISIED -	REVISED -		ILLINOIS FED. AID PROJECT							