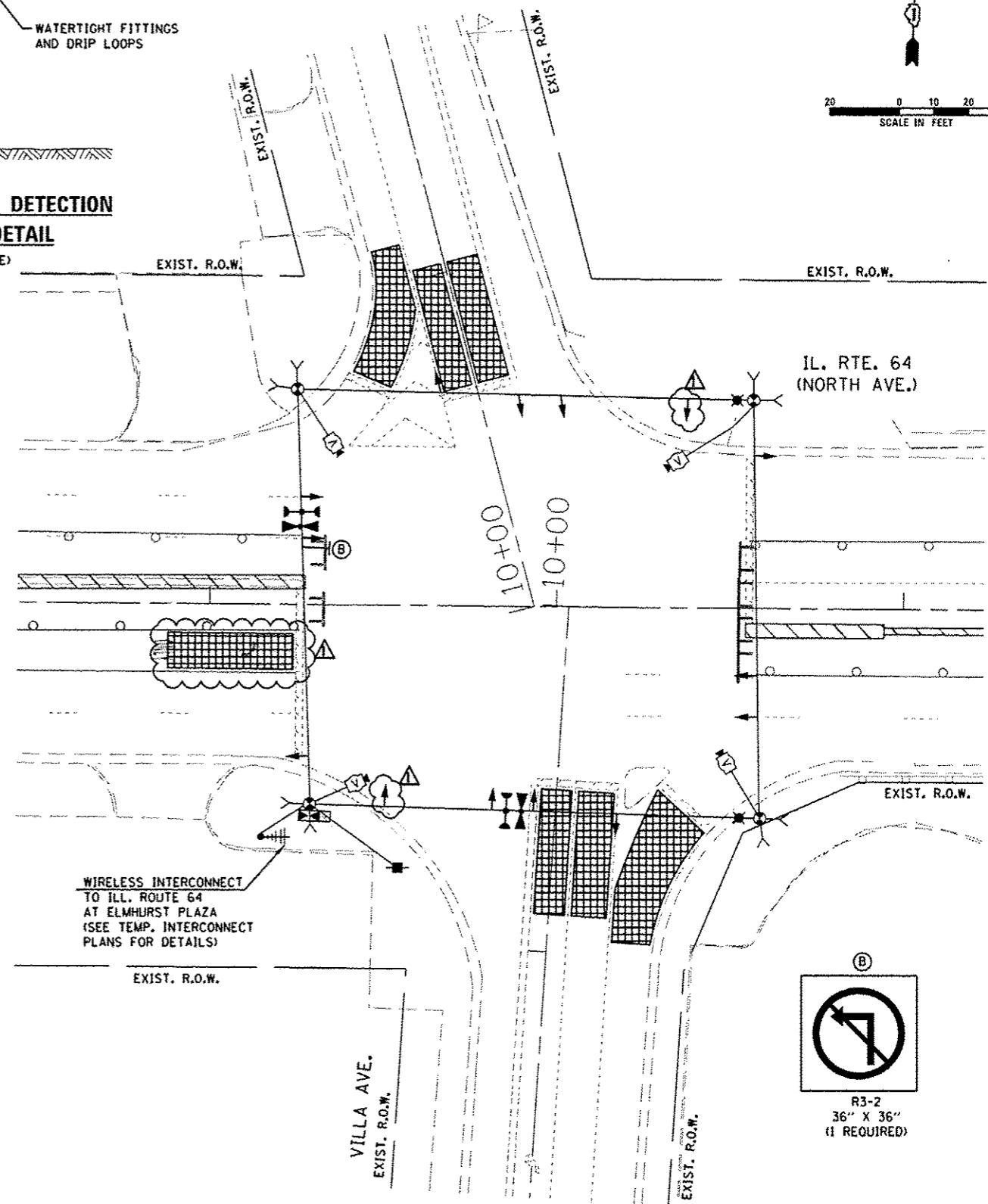


SIGNAL HEAD PLACEMENT FOR STAGE 3



SIGNAL HEAD PLACEMENT FOR STAGE 3A

THE TRAFFIC SIGNAL CONTROL EQUIPMENT FOR THIS PROJECT SHALL BE "EAGLE" TO MATCH THE EXISTING ADJACENT SYSTEM.

Rev. 1-8-14

J:\V3003\ADGN\CADD_Sheets\15171-sh1-1s-12.dgn 08-JAN-2014 15:55:47:ME\$

SINGH
INCORPORATED
CONSULTING ENGINEERS

| | | | |
|------------|---------------------|---------|--|
| USER NAME | mgorvada | | |
| DESIGNED | MG | REVISED | |
| DRAWN | MG | REVISED | |
| CHECKED | KGP | REVISED | |
| DATE | 10/25/2013 | REVISED | |
| PLOT SCALE | = 40.00000000000000 | | |
| PLOT DATE | = 08-JAN-2014 15:54 | | |

STATE OF ILLINOIS
DEPARTMENT OF TRANSPORTATION

TEMPORARY TRAFFIC SIGNAL INSTALLATION PLAN
ILLINOIS ROUTE 64 (NORTH AVENUE) AT VILLA AVENUE
STAGE 3 AND STAGE 3A

SCALE: AS NOTED SHEET NO. 10 OF 26 SHEETS STA. TO STA.

| | | | | |
|--------------------|---------|--------|---------------------------|-----------|
| F.A.P. RTE. | SECTION | COUNTY | TOTAL SHEETS | SHEET NO. |
| 307 | 131B-BR | DUPAGE | 111 | 53 |
| CONTRACT NO. 60V24 | | | ILLINOIS FED. AID PROJECT | |