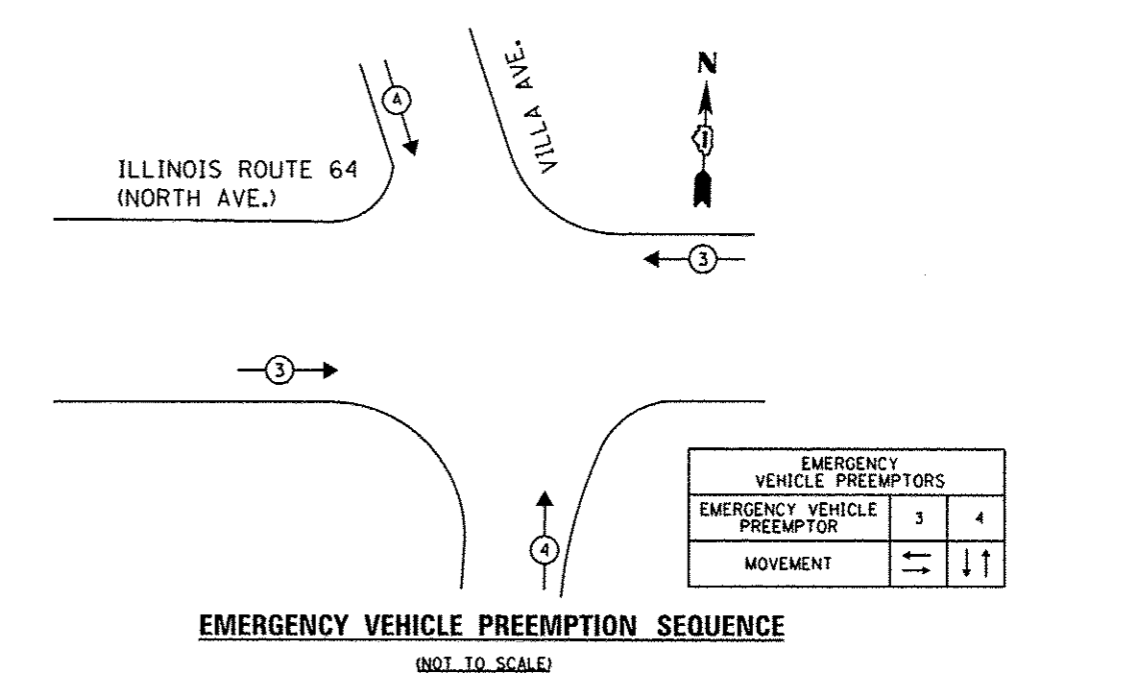
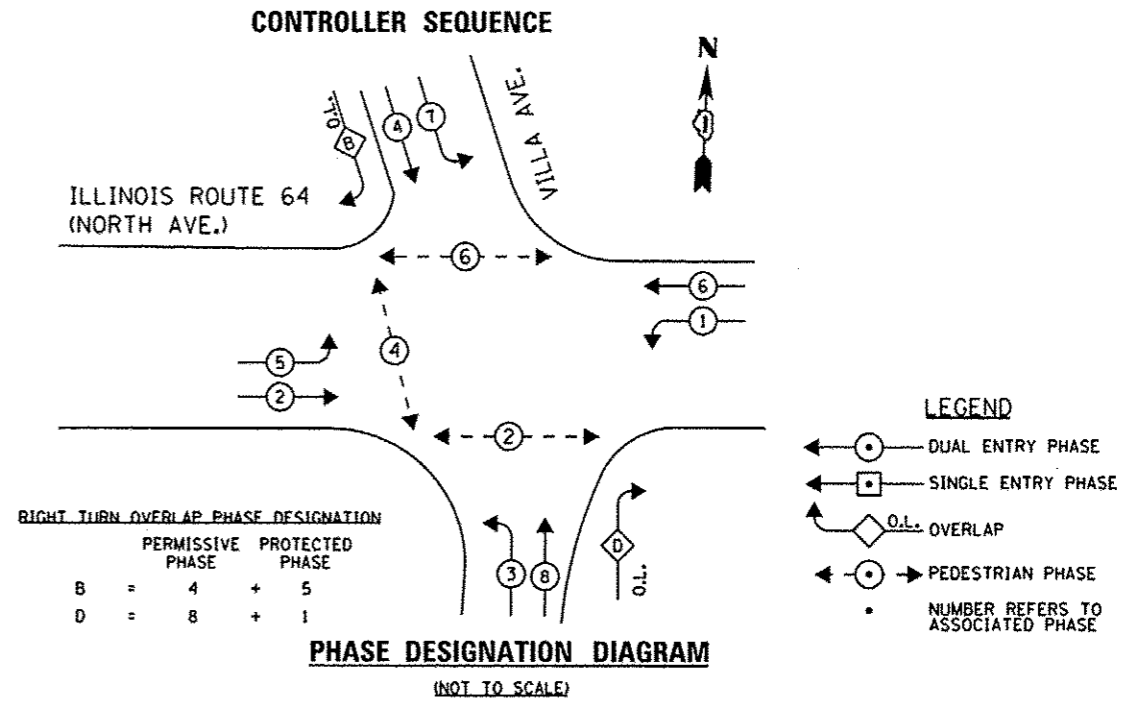


SCHEDULE OF QUANTITIES

QUANTITY	UNIT	ITEM
6	SQ FT	SIGN PANEL - TYPE 1
125	FOOT	UNDERGROUND CONDUIT, GALVANIZED STEEL, 2" DIA.
23	FOOT	UNDERGROUND CONDUIT, GALVANIZED STEEL, 2 1/2" DIA.
19	FOOT	UNDERGROUND CONDUIT, GALVANIZED STEEL, 3" DIA.
331	FOOT	UNDERGROUND CONDUIT, GALVANIZED STEEL, 4" DIA.
146	FOOT	CONDUIT EMBEDDED IN STRUCTURE, 2" DIA, PVC
2	EACH	JUNCTION BOX EMBEDDED IN STRUCTURE 18" X 12" X 6"
2	EACH	HANDHOLE
1	EACH	DOUBLE HANDHOLE
1029	FOOT	ELECTRIC CABLE IN CONDUIT, SIGNAL NO. 14 2C
1594	FOOT	ELECTRIC CABLE IN CONDUIT, SIGNAL NO. 14 3C
2246	FOOT	ELECTRIC CABLE IN CONDUIT, SIGNAL NO. 14 5C
2189	FOOT	ELECTRIC CABLE IN CONDUIT, SIGNAL NO. 14 7C
1544	FOOT	ELECTRIC CABLE IN CONDUIT, LEAD-IN, NO. 14 1 PAIR
415	FOOT	ELECTRIC CABLE IN CONDUIT, EQUIPMENT GROUNDING CONDUCTOR, NO. 6 1C
1	EACH	TRAFFIC SIGNAL POST, 10 FT.
1	EACH	STEEL MAST ARM ASSEMBLY AND POLE, 52 FT.
1	EACH	STEEL MAST ARM ASSEMBLY AND POLE, 54 FT.
4	FOOT	CONCRETE FOUNDATION, TYPE A
30	FOOT	CONCRETE FOUNDATION, TYPE E 36-INCH DIAMETER
4	EACH	DRILL EXISTING HANDHOLE
1	EACH	DRILL EXISTING HEAVY DUTY HANDHOLE
7	EACH	SIGNAL HEAD, LED, 1-FACE, 3-SECTION, MAST-ARM MOUNTED
1	EACH	SIGNAL HEAD, LED, 1-FACE, 5-SECTION, BRACKET MOUNTED
2	EACH	SIGNAL HEAD, LED, 1-FACE, 5-SECTION, MAST-ARM MOUNTED
1	EACH	SIGNAL HEAD, LED, 2-FACE, 5-SECTION, BRACKET MOUNTED
2	EACH	PEDESTRIAN SIGNAL HEAD, LED, 1-FACE, BRACKET MOUNTED WITH COUNTDOWN TIMER
2	EACH	PEDESTRIAN SIGNAL HEAD, LED, 2-FACE, BRACKET MOUNTED WITH COUNTDOWN TIMER
9	EACH	TRAFFIC SIGNAL BACKPLATE, LOUVERED, ALUMINUM
616	FOOT	DETECTOR LOOP, TYPE I
135	FOOT	PREFORMED DETECTOR LOOP
6	EACH	PEDESTRIAN PUSH-BUTTON
1	EACH	TEMPORARY TRAFFIC SIGNAL INSTALLATION
1	EACH	RELOCATE EXISTING SIGNAL HEAD
*	2	RELOCATE EXISTING EMERGENCY VEHICLE PRIORITY SYSTEM, DETECTOR UNIT
1	EACH	MODIFY EXISTING CONTROLLER CABINET
1996	FOOT	REMOVE ELECTRIC CABLE FROM CONDUIT
1	EACH	REMOVE EXISTING TRAFFIC SIGNAL EQUIPMENT
2	EACH	REMOVE EXISTING HANDHOLE
2	EACH	REMOVE EXISTING CONCRETE FOUNDATION
*	523	EMERGENCY VEHICLE PRIORITY SYSTEM LINE SENSOR CABLE, NO. 20 3/C
1	EACH	TEMPORARY TRAFFIC SIGNAL TIMING

* 100% COST TO VILLAGE OF VILLA PARK



THE TRAFFIC SIGNAL CONTROL EQUIPMENT FOR THIS PROJECT SHALL BE "EAGLE" TO MATCH THE EXISTING ADJACENT SYSTEM.

J:\3003\DRGN\CADD Sheets\15171-sht-1s-17.dgn
08-JAN-2014 15:58:17