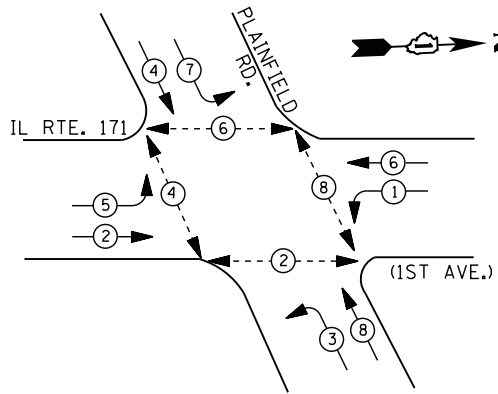


SCHEDULE OF QUANTITIES

QUANTITY	UNIT	ITEM
18	SO FT	SIGN PANEL - TYPE 1
22.5	SO FT	SIGN PANEL - TYPE 2
1	EACH	SERVICE INSTALLATION - POLE MOUNTED
836	FOOT	UNDERGROUND CONDUIT, GALVANIZED STEEL, 2" DIA.
58	FOOT	UNDERGROUND CONDUIT, GALVANIZED STEEL, 2 1/2" DIA.
48	FOOT	UNDERGROUND CONDUIT, GALVANIZED STEEL, 3" DIA.
454	FOOT	UNDERGROUND CONDUIT, GALVANIZED STEEL, 4" DIA.
3	EACH	HANDHOLE
5	EACH	HEAVY-DUTY HANDHOLE
2	EACH	DOUBLE HANDHOLE
1	EACH	TRANSCEIVER - FIBER OPTIC
1323	FOOT	ELECTRIC CABLE IN CONDUIT, SIGNAL NO. 14 2C
1675	FOOT	ELECTRIC CABLE IN CONDUIT, SIGNAL NO. 14 3C
1822	FOOT	ELECTRIC CABLE IN CONDUIT, SIGNAL NO. 14 5C
1512	FOOT	ELECTRIC CABLE IN CONDUIT, SIGNAL NO. 14 7C
2143	FOOT	ELECTRIC CABLE IN CONDUIT, LEAD-IN, NO. 14 1 PAIR
62	FOOT	ELECTRIC CABLE IN CONDUIT, SERVICE, NO. 6 2 C
603	FOOT	ELECTRIC CABLE IN CONDUIT, EQUIPMENT GROUNDING CONDUCTOR, NO. 6 1C
4	EACH	TRAFFIC SIGNAL POST, GALVANIZED STEEL 16 FT.
2	EACH	STEEL MAST ARM ASSEMBLY AND POLE, 26 FT.
2	EACH	STEEL MAST ARM ASSEMBLY AND POLE, 36 FT.
16	FOOT	CONCRETE FOUNDATION, TYPE A
4	FOOT	CONCRETE FOUNDATION, TYPE C
47	FOOT	CONCRETE FOUNDATION, TYPE E 30-INCH DIAMETER
6	EACH	SIGNAL HEAD, LED, 1-FACE, 3-SECTION, MAST-ARM MOUNTED
4	EACH	SIGNAL HEAD, LED, 1-FACE, 5-SECTION, MAST-ARM MOUNTED
4	EACH	SIGNAL HEAD, LED, 2-FACE, 1-3 SECTION, 1-5 SECTION, BRACKET MOUNTED
6	EACH	PEDESTRIAN SIGNAL HEAD, LED, 1-FACE, BRACKET MOUNTED WITH COUNTDOWN TIMER
1	EACH	PEDESTRIAN SIGNAL HEAD, LED, 2-FACE, BRACKET MOUNTED WITH COUNTDOWN TIMER
10	EACH	TRAFFIC SIGNAL BACKPLATE, LOUVERED, ALUMINUM
9	EACH	INDUCTIVE LOOP DETECTOR
791	FOOT	DETECTOR LOOP, TYPE I
* 2	EACH	LIGHT DETECTOR
* 1	EACH	LIGHT DETECTOR AMPLIFIER
8	EACH	PEDESTRIAN PUSH-BUTTON
1	EACH	TEMPORARY TRAFFIC SIGNAL INSTALLATION
1	EACH	REMOVE EXISTING TRAFFIC SIGNAL EQUIPMENT
7	EACH	REMOVE EXISTING HANDHOLE
1	EACH	REMOVE EXISTING DOUBLE HANDHOLE
10	EACH	REMOVE EXISTING CONCRETE FOUNDATION
1	EACH	TEMPORARY TRAFFIC SIGNAL TIMING
* 298	FOOT	EMERGENCY VEHICLE PRIORITY SYSTEM LINE SENSOR CABLE, NO. 20 3/C
1	EACH	FULL-ACTUATED CONTROLLER AND TYPE IV CABINET, SPECIAL
1	EACH	UNINTERRUPTIBLE POWER SUPPLY, SPECIAL

* 100% VILLAGE OF LYONS COST

CONTROLLER SEQUENCE



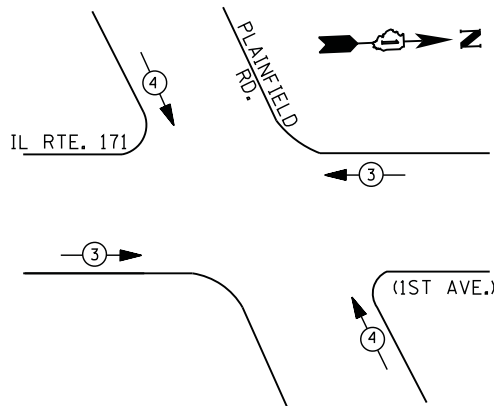
LEGEND

- ⊙ DUAL ENTRY PHASE
- ⊙ PEDESTRIAN PHASE
- ⊙ SINGLE ENTRY PHASE
- ⊙ OVERLAP
- * NUMBER REFERS TO ASSOCIATED PHASE

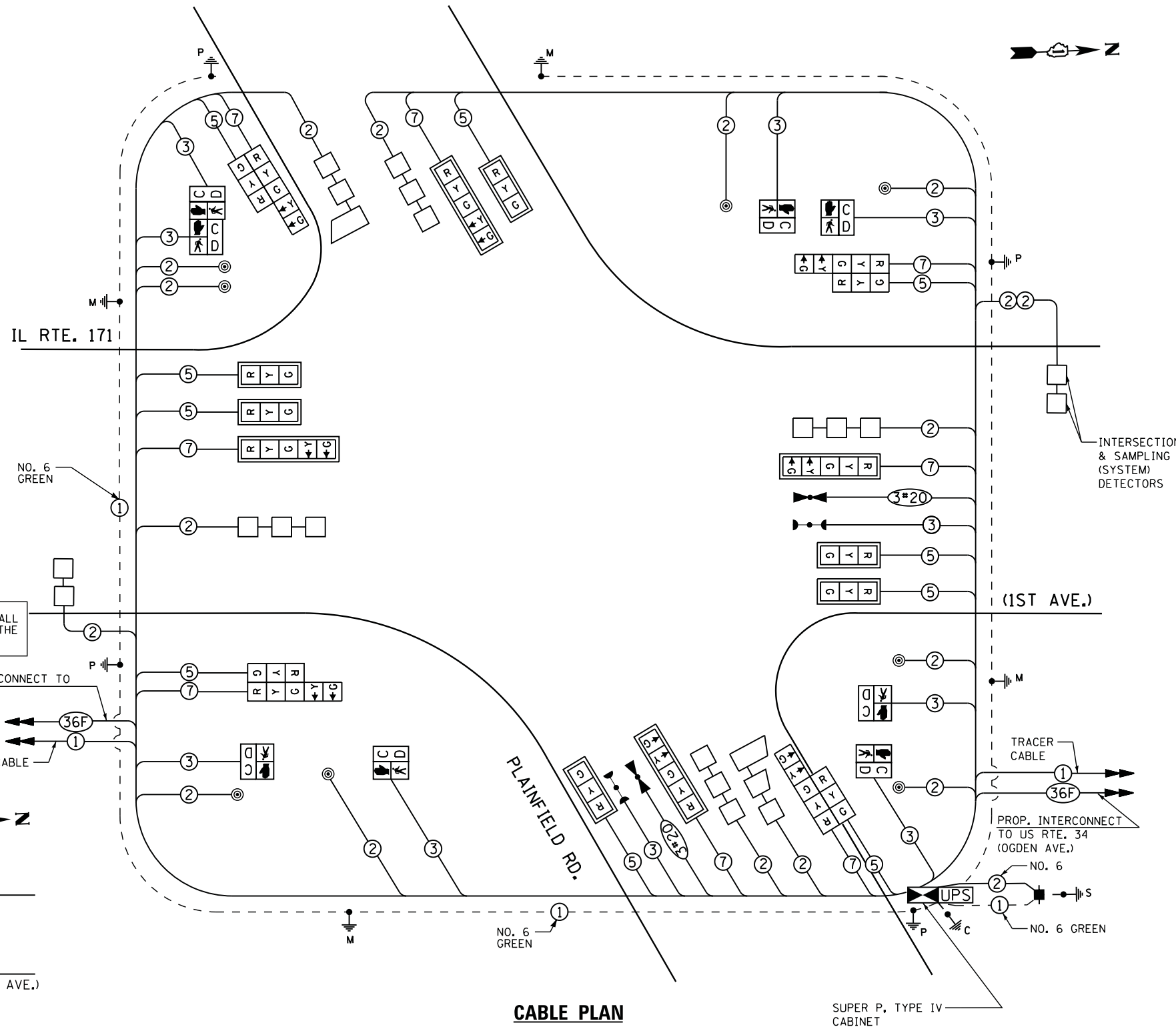
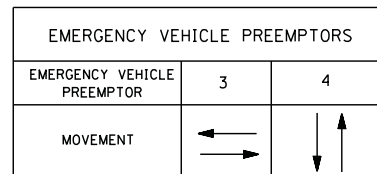
THE END OF THE TRACER CABLE SHALL BE CONTINUOUS AND EXTEND INTO THE CONTROLLER CABINET.

PROP. INTERCONNECT TO 44TH ST.
 TRACER CABLE

PHASE DESIGNATION DIAGRAM



EMERGENCY VEHICLE PREEMPTION SEQUENCE



CABLE PLAN

THE TRAFFIC SIGNAL CONTROL EQUIPMENT FOR THIS PROJECT SHALL BE "EAGLE" TO MATCH THE EXISTING ADJACENT SYSTEM.

RESTORATION OF WORK AREA. RESTORATION OF THE TRAFFIC SIGNAL WORK AREA SHALL BE INCLUDED IN THE RELATED PAY ITEM SUCH AS FOUNDATION, CONDUIT, HANDHOLE, TRENCH AND BACKFILL, ETC., AND NO EXTRA COMPENSATION SHALL BE ALLOWED. ALL ROADWAY SURFACES SUCH AS SHOULDERS, MEDIAN, SIDEWALKS, PAVEMENT ETC. SHALL BE REPLACED IN KIND. ALL DAMAGE TO MOWED LAWNS SHALL BE REPLACED WITH AN APPROVED SOD, AND ALL DAMAGE TO UNMOWED FIELDS SHALL BE SEEDED IN ACCORDANCE WITH STANDARD SPECIFICATIONS 252 AND 250 RESPECTIVELY.

I. D. O. T. TRAFFIC SIGNAL INSTALLATION ELECTRICAL SERVICE REQUIREMENTS					
TYPE	NO. LAMPS	WATTAGE		% OPERATIONS	TOTAL WATTAGE
		INCAND.	LED		
SIGNAL (RED)	18	135	17	0.50	153
(YELLOW)	18	135	25	0.25	113
(GREEN)	18	135	15	0.25	68
ARROW	16	135	12	0.10	20
PED. SIGNAL	8	90	25	1.00	200
CONTROLLER	1	100	100	1.00	100
ILLUM. SIGN		100	90	1.00	
TOTAL =					654

ENERGY COSTS- BILLED TO: IDOT - DISTRICT 1
 201 W. CENTER CT.
 SCHAUMBURG, IL 60196

ENERGY SUPPLY - CONTACT COMED
 PHONE 630-723-2128

FILE NAME =	USER NAME = \$USER\$	DESIGNED - DW	REVISED -
N:\Projects\312055\DesignCAD\Sheet Files\60V34\wsl7\cabPLAINFIELD.dgn		DRAWN - LV	REVISED -
	PLOT SCALE = \$SCALE\$	CHECKED - KM	REVISED -
	PLOT DATE = 10/11/2013	DATE - 9/25/2012	REVISED -

STATE OF ILLINOIS
 DEPARTMENT OF TRANSPORTATION

CABLE PLAN, SCHEDULE OF QUANTITIES,
 PHASE DESIGNATION DIAGRAM & EVP SEQUENCE
 IL ROUTE 171 (1ST AVE.) AT PLAINFIELD ROAD

SCALE: N.T.S. SHEET NO. OF SHEETS STA. TO STA.

F.A.P. RTE.	SECTION	COUNTY	TOTAL SHEETS	SHEET NO.
372	2012-0471	COOK	63	29
CONTRACT NO. 60V34				
ILLINOIS FED. AID PROJECT				